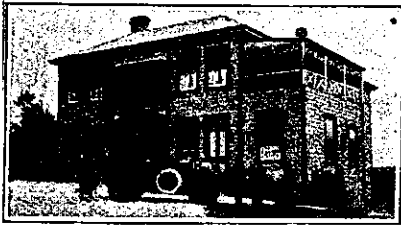


NEW ZEALAND HOTEL DIRECTORY. — (CONTINUED). — PATRONISED BY HORSEMEN, CYCLISTS, MOTORISTS, SPORTSMEN, COMMERCIAL TRAVELLERS AND THE THEATRICAL PROFESSION.



MAUNGATUROTO HOTEL,
MAUNGATUROTO.

MRS. E. E. HYLAND .. Proprietress.

The Hotel has recently been renovated and refurnished throughout and offers first-class Accommodation to Travellers. Only the best brands of Wines, Ales, Spirits, Etc., kept in stock.

MANGAWHARE HOTEL,
MANGAWHARE

(One mile from Dargaville.)
FIRST-CLASS ACCOMMODATION FOR THE TRAVELLING PUBLIC. THE MOST UP-TO-DATE HOTEL IN THE DISTRICT.

A. UNDERWOOD Proprietor.

MOTU.

THE MOTU HOTEL,
MOTU.

Midway between the Bay of Plenty and Poverty Bay.

This Hotel has all the comforts of a modern home; hot and cold water, baths, gas, sitting-rooms, well furnished bedrooms and billiard room. The Motu River, close to the Hotel, is an ideal trout stream. Super or brands of Wines and Spirits.

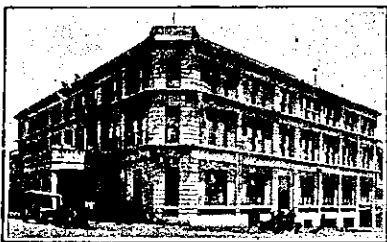
A. S. CAULTON Proprietor.

NAPIER.

TERMINUS HOTEL,
NAPIER.

An Ideal House for Travellers, adjoining Railway Station. First-class Accommodation. Moderate Tariff.

Liquors absolutely true to label.
G. F. BONNAR Proprietor.



CALEDONIAN HOTEL,
NAPIER.

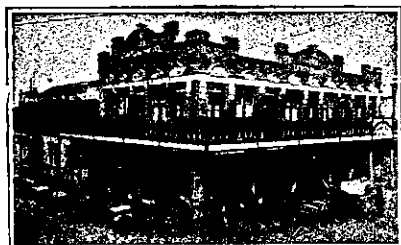
Now under the Proprietorship of FRANK RHODES, late of the Empire Hotel, Timaru.

Five minutes Post Office and Station. Accommodation for 100 guests. Excellent Cuisine. Moderate Tariff.

All Wines and Spirits true to label. Telegrams — "Rhodes, Caledonian, Napier."

FERNHILL HOTEL,
MIDWAY BETWEEN NAPIER AND HASTINGS.

EVERY ATTENTION TO THE TRAVELLING PUBLIC. EVERYTHING OF THE BEST.
W. PUSHELL Proprietor.



THE CENTRAL HOTEL,
NAPIER.

EXCELLENT CUISINE AND EVERY MODERN CONVENIENCE.

A MODERATE TARIFF. Telephone 236.
W. E. HILL Proprietor.

WAVERLEY HOTEL,
GREENMEADOWS.

(Adjoining Napier Park Racecourse),
T. C. BOYLE

Begs to inform the Travelling Public that he has taken over the Waverley Hotel. Good Table, and the Best of Ales, Wines, Spirits, etc. Good stabling accommodation adjoining the Napier Park Racecourse.

NEW PLYMOUTH.

ROYAL HOTEL,
NEW PLYMOUTH.

Offers First-class Accommodation to Travellers. Renovated and refurnished throughout. Best of everything.

W. G. EMENY Proprietor.

CRITERION HOTEL.



NEW PLYMOUTH.

Being centrally situated is unequalled for Tourists and Commercial Gentlemen. The table is maintained at a uniform standard of excellence, and visitors can be certain of obtaining the Best Menu in New Plymouth. Hot and Cold Baths always available. Sanitary appointments are well up to date. Night porter in attendance.

J. McKEAN Proprietor.
P.O. Box 21. Phone No. 30.

GROSVENOR HOTEL,
NEW PLYMOUTH.

Telephone 225.

The above Hotel is directly opposite Railway Station, and overlooks the sea, and offers First-class Accommodation to the Travelling Public.

TARIFF 6s. 6d. PER DAY.
CHAS. A. HARRISON ... Proprietor.

NELSON.

EXCHANGE HOTEL,
NELSON.

R. (BOB) T. BLAND.

Extensive alterations have been made in the interior of this OLD ESTABLISHED HOSTELRY, and Patrons will find the New Bar second to none in the City for comfort and convenience.

A CALL SOLICITED.
NONE BUT THE BEST OF LIQUORS.

WAKATU HOTEL,
NELSON.

MR E. (TED) J. WINTER, Proprietor, Has much pleasure in informing old friends that he has taken over the above well-known Hotel. Visitors to Nelson can secure excellent accommodation at a Moderate Tariff. A home away from home. Seats booked here for motor car for Motueka and Takaka.

OTAHUHU.



CRITERION HOTEL,
OTAHUHU.

Good Accommodation for the Travelling Public. Replete with every Modern Convenience. Only the Best Brands of Wines, Ales, Spirits, etc., kept in Stock.
SECCOMBE'S DRAUGHT ALES.

W. J. WILLIAMS Proprietor.

OTAKI.

FAMILY HOTEL,
OTAKI.

This house has been thoroughly renovated and refurnished. Splendid accommodation for Travellers. Only the Best Liquors.

W. E. MANNING Proprietor.

OKARU.

YOUR LUGGAGE removed from Station, Hotel, anywhere, carefully and with despatch.

ERNEST R. SPEID,
Carrier.

Phone 363, or Star and Garter Hotel, Box 31.
Letters and Telegrams receive prompt attention.

OTAKI.

CENTRAL HOTEL,
OTAKI.

GEO. TULLOCH Proprietor.
BEST WINES AND SPIRITS.
EVERY COMFORT FOR THE TRAVELLING PUBLIC.

ONEHUNGA.

HIBERNIAN HOTEL,
QUEEN STREET, ONEHUNGA.

FIRST-CLASS ACCOMMODATION.
Only Best Wines and Spirits Stocked.
Tariff, 6s. 6d. per day.

MRS. H. DINGLE Proprietress.

PALMERSTON NORTH.

THE CLUB HOTEL,
PALMERSTON NORTH.

Stands on two acres of land; frontage 165ft.; promenade balcony; contains 60 bedrooms, and private sitting-rooms, and 12 sample rooms. The appointed house for the Association of N.Z. and Australian Commercial Travellers.

H. B. TUCKER,
Proprietor and Owner.

BURTON BREWERY CO.,
LIMITED,
PALMERSTON NORTH.

ALES AND STOUT IN BULK OR BOTTLE.
Brewed only from Choicest Hops and Malt.

To be obtained at all the PRINCIPAL HOTELS IN THE WELLINGTON DISTRICT.

PAHIATUA.

COMMERCIAL HOTEL,
PAHIATUA.

MR. (TED) SULLIVAN wishes his old friends and the Travelling Public to know that he is now in the above well-known House. Everything of the Best.

TED SULLIVAN Proprietor.

PAHI HOTEL,
PAHI.

FIRST-CLASS ACCOMMODATION FOR TRAVELLERS.
BEST BRANDS WINES, SPIRITS, ALES, ETC.
J. RYAN Proprietor.

PATEA.

MASONIC HOTEL,
PATEA.

The Hotel has been recently renovated and refurnished throughout and offers First-class Accommodation to Travellers.

TARIFF, 4s. 6d. PER DAY.
E. SMITH Proprietor.

THE ALBION HOTEL,
PATEA.

FIRST-CLASS ACCOMMODATION FOR TOURISTS, FAMILIES AND TRAVELLERS.
WINES, ALES AND SPIRITS OF THE BEST.
J. A. COOGAN Proprietor.

PLEASANT POINT.

RAILWAY HOTEL,
PLEASANT POINT.

The above Hotel has just been erected on most modern architectural lines, both inside and out. Electric light. Absolutely fire-proof. New furniture, and every sanitary convenience; hot and cold water, baths. Excellent Cuisine, and Liquors of the best procurable. Tourists, Travellers and Sportsmen will find in this House every modern comfort. Motor garage. New Alcock's billiard table.
F. NELLIGAN Proprietor.

STRATFORD.

STRATFORD HOTEL,
BROADWAY, STRATFORD.

(Opposite Newton King's Offices.) This Hotel is now under new management, and is being thoroughly renovated. Liquors of the Best, and Speight's beer only drawn.
F. WHITTLE Proprietor.

THE MOST UP-TO-DATE WAR PICTURES APPEAR In the
N.Z. SPORTING & DRAMATIC REVIEW.

PRICE 6d. ALL BOOKSELLERS.

TEMUKA.

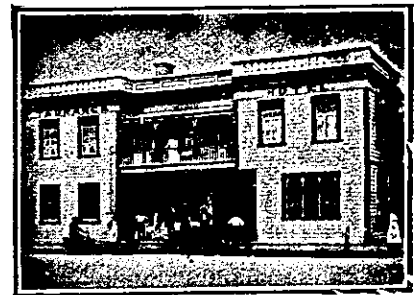


ROYAL HOTEL,
TEMUKA.

Offers first-class accommodation to Tourists and Travellers. All modern conveniences. Excellent fishing in the neighbourhood. Moderate tariff.

TOM LATTA Proprietor.

TAURANGA.

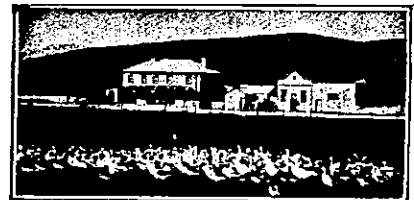


TAURANGA HOTEL,
TAURANGA.

FIRST-CLASS CUISINE AND ATTENTION.
ALES, WINES AND SPIRITS OF GUARANTEED QUALITY.
Correspondence Promptly Attended to.
P.O. Box 37.
Telegraphic Address: "Tourist," Tauranga.

SAMUEL TANNER Proprietor.
(Late of Waihi).

TE AUTE.



TE AUTE HOTEL,
HALF-WAY BETWEEN WAIPAWA AND HASTINGS.
Best Wines and Spirits kept. Good table. Good Shooting and Fishing.

T. BURGESS Proprietor.

TANGITERORIA.

TANGITERORIA HOTEL,
TANGITERORIA.
The above Hotel is now under new Management.
ONLY THE BEST WINES AND SPIRITS STOCKED.
JAS MEWETT Proprietor.

TIMARU.

CROWN HOTEL,
TIMARU.

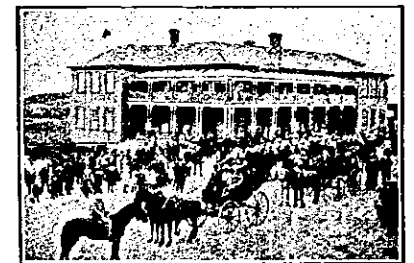
EXCELLENT ACCOMMODATION AND ATTENTION.

Central Location. Handy to Caroline Bay, Theatres, Wharf and Railway.
Nothing but the Best in the Bar.

R. BERTI Proprietor.

TE AROHA.

Phone No. 1. P.O. Box 51.
PALACE HOTEL,
TE AROHA.



THE HOUSE FOR COMMERCIALS AND THE TRAVELLING PUBLIC.
Hot and cold baths, electric light and every modern convenience.
Excellent Cuisine.
Wines and Spirits of Best Brands.
M. LAWLESS Proprietress.