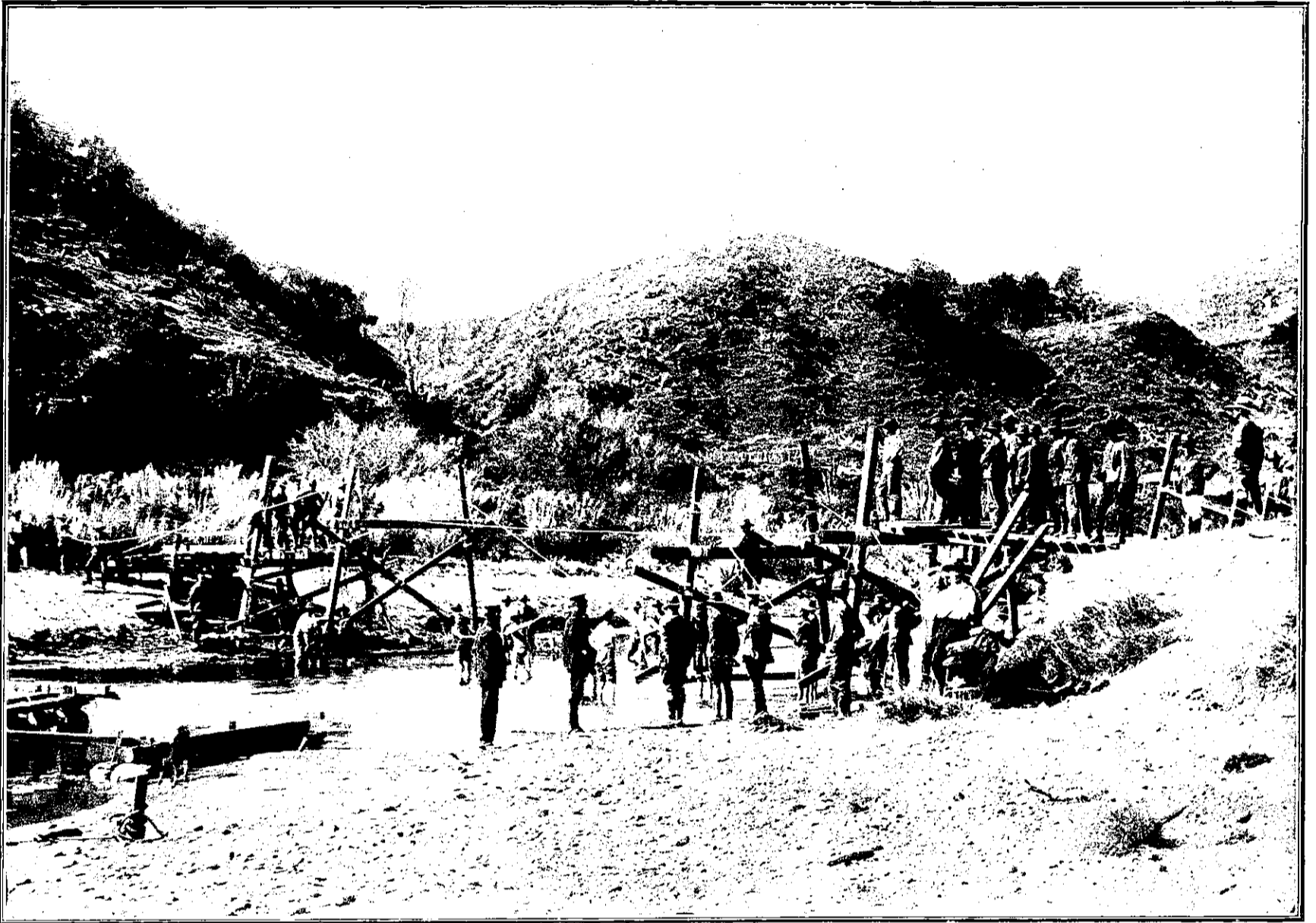
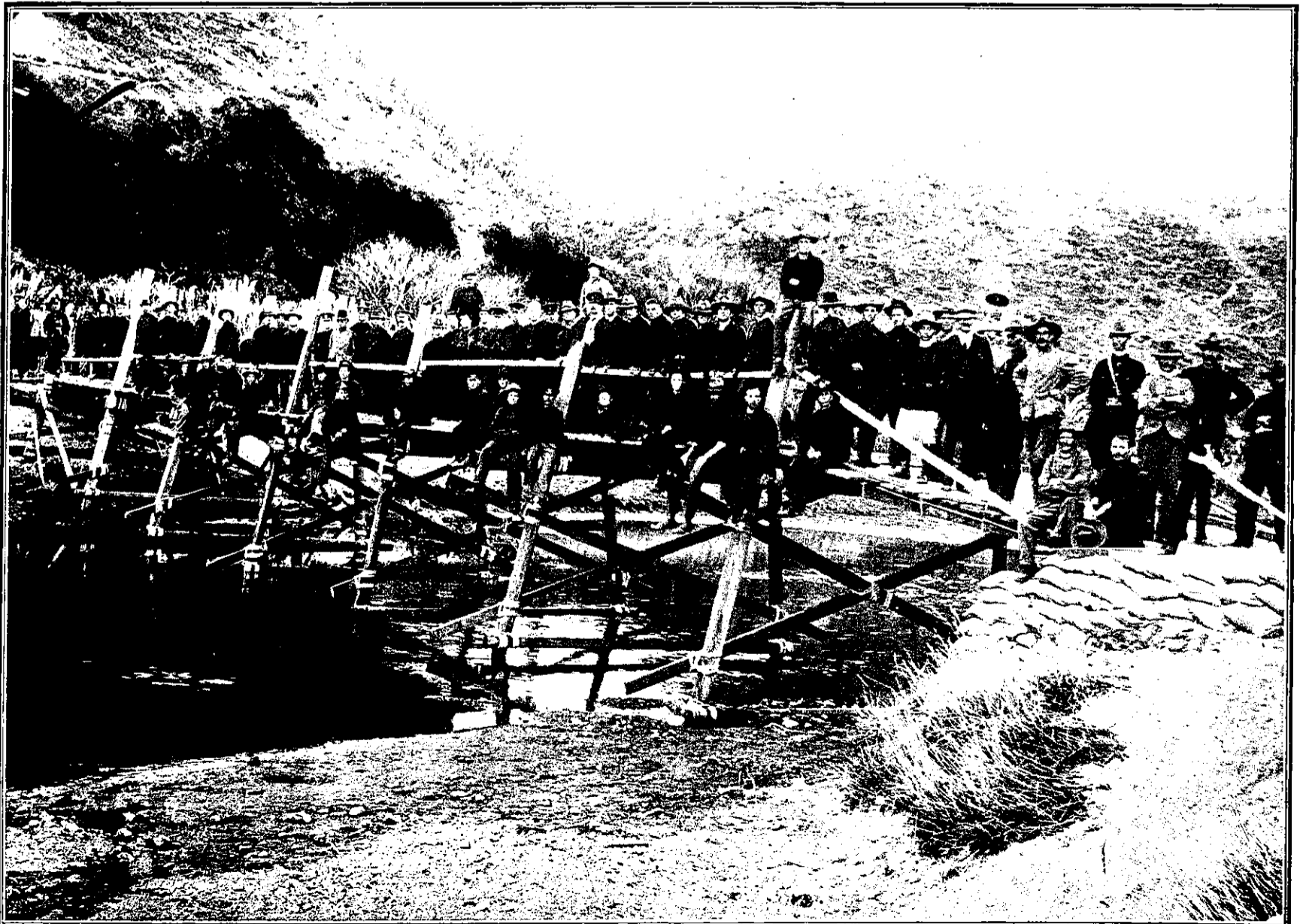


Railway Engineers Engaged in Military Bridge Building at Turakina, Wanganui.

Considerable interest has been taken in the Military Camp of Instruction for the Officers and Senior Non commissioned Officers of the North Island Railway Battalion, N.Z. Engineers, which was held at Turakina, in the Wanganui district, from February 13 to February 22. The camp was under the command of Lieutenant-Colonel G. Barclay, V.D. of Auckland, Battalion Commander. The Railway Battalions of Field Engineers represent the contribution of the Railway Service to the Territorial system of defence, and New Zealand has the distinction of having provided the first fully organised Railway Battalion within the Empire. The system of training synchronises with the civil occupations of the men, and probably no other Territorial unit has less difficulty in bringing the average recruit to an average stage of efficiency. A large proportion of the members belong to various technical branches of the railway service; some ten per cent. of the men in the ranks are qualified telegraphists, and every branch of railway activity is represented. There are traffic control officers and locomotive men, electricians, fitters, carpenters, plumbers, and all the other tradesmen and technical workers who make up the efficient and self-contained railway service. A full training syllabus was gone through, comprising pontoon and other bridging, mining, trenching and sapping musketry, explosives, demolitions, military railway control, etc., in addition to musketry and other infantry work.



THE BRIDGE IN COURSE OF ERECTION BY THE NORTH ISLAND RAILWAY BATTALION, NEW ZEALAND ENGINEERS.



THE COMPLETED STRUCTURE, THE STRENGTH OF WHICH IS EVIDENCED BY THE WEIGHT IT IS SUPPORTING. THE BRIDGE WAS ERECTED WITH REMARKABLE QUICKNESS AND REFLECTED THE GREATEST CREDIT UPON THIS INVALUABLE BRANCH OF THE TERRITORIAL FORCES OF THE DOMINION.