

NEW ZEALAND HOTEL DIRECTORY, — (CONTINUED). — PATRONISED BY HOMEBOARDS, TOURISTS, MOTORISTS, SPORTSMEN, COMMER-
CIAL TRAVELLERS AND THE THEATRICAL PROFESSION.



MAUNGATUROTO HOTEL,
MAUNGATUROTO.
MRS. E. E. HYLAND .. Proprietress.

The Hotel has recently been renovated and refurnished throughout and offers first-class Accommodation to Travellers. Only the best brands of Wines, Ales, Spirits, Etc., kept in stock.

MANGAWHARE HOTEL,
MANGAWHARE
(One mile from Dargaville.)
FIRST-CLASS ACCOMMODATION
FOR THE TRAVELLING PUBLIC.
THE MOST UP-TO-DATE HOTEL IN
THE DISTRICT.
A. UNDERWOOD Proprietor.

MERCER.

RAILWAY HOTEL,
MERCER.

First-class Accommodation for Tour-
ists and Travellers.

Wines and Spirits of the Best Brands
only kept in stock.

W. C. PICKETT Proprietor.

MOTU.

THE MOTU HOTEL,
MOTU.

Midway between the Bay of Plenty and
Poverty Bay.

This Hotel has all the comforts of a
modern home; hot and cold water,
baths, gas, sitting-rooms, well furnished
bedrooms and billiard room. The Motu
River, close to the Hotel, is an ideal
trout stream. Superior brands of Wines
and Spirits.

A. S. CAULTON Proprietor.

NAPIER.

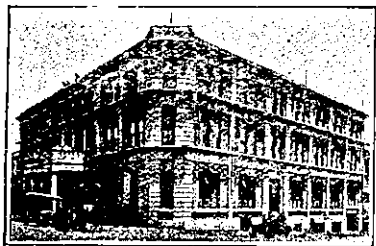
TERMINUS HOTEL,
NAPIER.

An Ideal House for Travellers, ad-
joining Railway Station.

First-class Accommodation. Moderate
Tariff.

Liquors absolutely true to label.

G. F. BONNAR Proprietor.



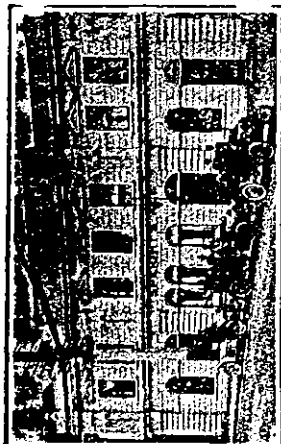
CALEDONIAN HOTEL,
NAPIER.

Now under the Proprietorship of
FRANK RHODES, late of the Empire
Hotel, Timaru.

Five minutes Post Office and Station.
Accommodation for 100 guests. Ex-
cellent Cuisine. Moderate Tariff.

All Wines and Spirits true to label.
Telegrams — "Rhodes, Caledonian,
Napier."

CLARENDON HOTEL,
Opposite Post Office, NAPIER.



BEST OF SPIRITS AND WINES.
SPEIGHT'S BEER.
GOOD ACCOMMODATION.

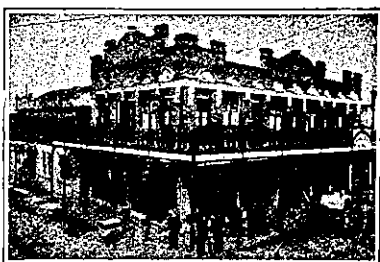
W. READING Proprietor.

FERNHILL HOTEL,
MIDWAY BETWEEN NAPIER AND
HASTINGS.

EVERY ATTENTION TO THE
TRAVELLING PUBLIC.
EVERYTHING OF THE BEST.

W. PUSHELL Proprietor.

NAPIER.



THE CENTRAL HOTEL,
NAPIER.

EXCELLENT CUISINE AND EVERY
MODERN CONVENIENCE.

A MODERATE TARIFF.
Telephone 236.

W. E. HILL Proprietor.

WAVERLEY HOTEL,
GREENMEADOWS.

(Adjoining Napier Park Racecourse),
T. C. BOYLE

Begs to inform the Travelling Public
that he has taken over the Waverley
Hotel. Good Table, and the Best of
Ales, Wines, Spirits, etc. Good stabl-
ing accommodation adjoining the Napier
Park Racecourse.

NEW PLYMOUTH.

ROYAL HOTEL,
NEW PLYMOUTH.

Offers First-class Accommodation to
Travellers. Renovated and refurnished
throughout. Best of everything.

W. G. EMENY Proprietor.

CRITERION HOTEL.



NEW PLYMOUTH.

Being centrally situated is unequalled
for Tourists and Commercial Gentle-
men. The table is maintained at a uni-
form standard of excellence, and visit-
ors can be certain of obtaining the Best
Menu in New Plymouth. Hot and Cold
Baths always available. Sanitary ap-
pointments are well up to date. Night
porter in attendance.

J. McKEAN Proprietor.
P.O. Box 21. Phone No. 30.

GROSVENOR HOTEL,
NEW PLYMOUTH.

Telephone 225.
The above Hotel is directly opposite
Railway Station, and overlooks the sea,
and offers First-class Accommodation
to the Travelling Public.

TARIFF 6s. 6d. PER DAY.
CHAS. A. HARRISON Proprietor.

NELSON.

EXCHANGE HOTEL,
NELSON.

R. (BOB) T. BLAND.

Extensive alterations have been made
in the interior of this OLD ESTAB-
LISHED HOSTELRY, and Patrons will
find the New Bar second to none in the
City for comfort and convenience.

A CALL SOLICITED.
NONE BUT THE BEST OF LIQUORS.

WAKATU HOTEL,
NELSON.

MR E. (TED) J. WINTER, Proprietor,
Has much pleasure in informing old
friends that he has taken over the above
well-known Hotel. Visitors to Nelson
can secure excellent accommodation at
a Moderate Tariff. A home away from
home. Seats booked here for motor
car for Motueka and Takaka.

BE SURE YOU GET YOUR COPY
OF

New Zealand's Brightest and Best
Illustrated Paper,

The N.Z.
SPORTING AND DRAMATIC
REVIEW.

PRICE 6d.—All Booksellers.

OTAHUHU.



CRITERION HOTEL,
OTAHUHU.

Good Accommodation for the Travel-
ling Public.
Replete with every Modern Conven-
ience.

Only the Best Brands of Wines, Ales,
Spirits, etc., kept in Stock.
SECCOMBE'S DRAUGHT ALES.

W. J. WILLIAMS Proprietor.

OTAKI.

FAMILY HOTEL,
OTAKI.

This house has been thoroughly reno-
vated and refurnished. Splendid ac-
commodation for Travellers. Only the
Best Liquors.

W. E. MANNING Proprietor.

OAMARU.

WHEN NEXT IN OAMARU
Stay at the
STAR & GARTER HOTEL.

A handsome stone building re-
cently renovated and re-furnished
throughout.

Commercial room, smoking
room, private sitting room; 40
large and airy bedrooms. Head-
quarters of the North Otago Club
within the building. Carrier and
porter meet all trains. Cuisine
unsurpassed in the Dominion.
TARIFF, 9s. PER DIEM.

MRS. M. HARVEY, Proprietress.

YOUR LUGGAGE removed from
Station, Hotel, anywhere, care-
fully and with despatch.

ERNEST R. SPEID,
Carrier.

Phone 363, or Star and Garter
Hotel, Box 31.
Letters and Telegrams receive
prompt attention.

ONEHUNGA.

HIBERNIAN HOTEL,
QUEEN STREET, ONEHUNGA.

FIRST-CLASS ACCOMMODATION.

Only Best Wines and Spirits Stocked.
Tariff, 6s. 6d. per day.

MRS. H. DINGLE Proprietress.

PALMERSTON NORTH.

THE CLUB HOTEL,
PALMERSTON NORTH.

Stands on two acres of land; front-
age 165ft.; promenade balcony; contains
60 bedrooms, and private sitting-rooms,
and 12 sample rooms. The appointed
house for the Association of N.Z. and
Australian Commercial Travellers.

H. B. TUCKER,
Proprietor and Owner.

BURTON BREWERY CO.,
LIMITED,
PALMERSTON NORTH.

ALES AND STOUT IN BULK OR
BOTTLE.

Brewed only from Choicest Hops and
Malt.

To be obtained at all the
PRINCIPAL HOTELS IN THE
WELLINGTON DISTRICT.

PAHIATUA.

COMMERCIAL HOTEL,
PAHIATUA.

MR. (TED) SULLIVAN wishes his
old friends and the Travelling Public
to know that he is now in the above
well-known House. Everything of the
Best.

TED SULLIVAN Proprietor.

PAHI HOTEL,
PAHI.

FIRST-CLASS ACCOMMODATION
FOR TRAVELLERS.

BEST BRANDS WINES, SPIRITS,
ALES, ETC.

J. RYAN Proprietor.

PATEA.

MASONIC HOTEL,
PATEA.

The Hotel has been recently renovat-
ed and refurnished throughout and
offers First-class Accommodation to
Travellers.

TARIFF, 4s. 6d. PER DAY.

E. SMITH Proprietor.

THE ALBION HOTEL,
PATEA.

FIRST-CLASS ACCOMMODATION FOR
TOURISTS, FAMILIES AND
TRAVELLERS.

WINES, ALES AND SPIRITS OF THE
BEST.

J. A. COOGAN Proprietor.

PLEASANT POINT.

RAILWAY HOTEL,
PLEASANT POINT.

The above Hotel has just been erect-
ed on most modern architectural lines,
both inside and out. Electric light.
Absolutely fire-proof. New furniture,
and every sanitary convenience; hot and
cold water, baths. Excellent Cuisine,
and Liquors of the best procurable.
Tourists, Travellers and Sportsmen
will find in this House every modern
comfort. Motor garage. New Alcock's
billiard table.

F. NELLIGAN Proprietor.

STRATFORD.

STRATFORD HOTEL,
BROADWAY, STRATFORD.

(Opposite Newton King's Offices.)
This Hotel is now under new man-
agement, and is being thoroughly reno-
vated. Liquors of the Best, and
Speight's beer only drawn.

F. WHITTLE Proprietor.

TEMUKA.

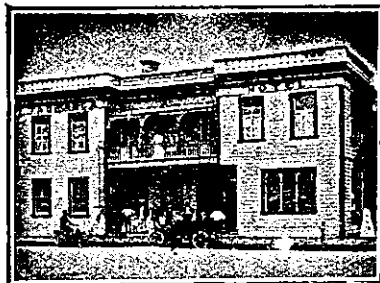


ROYAL HOTEL,
TEMUKA.

Offers first-class accommodation to
Tourists and Travellers. All modern
conveniences. Excellent fishing in the
neighbourhood. Moderate tariff.

TOM LATTA Proprietor.

TAURANGA.



TAURANGA HOTEL,
TAURANGA.

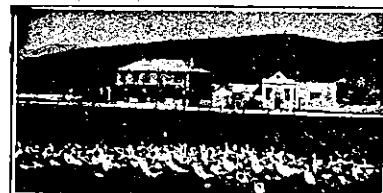
FIRST-CLASS CUISINE AND
ATTENTION.

ALES, WINES AND SPIRITS OF
GUARANTEED QUALITY.

Correspondence Promptly Attended to.
P.O. Box 37.
Telegraphic Address: "Tourist,"
Tauranga.

SAMUEL TANNER Proprietor.
(Late of Waihi).

TE AUTE.



TE AUTE HOTEL,
HALF-WAY BETWEEN WAIPAWA
AND HASTINGS.

Best Wines and Spirits kept. Good
table. Good Shooting and Fishing.

T. BURGESS Proprietor.

TANGITERORIA HOTEL,
TANGITERORIA.

The above Hotel is now under new
Management.
ONLY THE BEST WINES AND
SPIRITS STOCKED.

JAS MEWETT Proprietor.