

NEW ZEALAND HOTEL DIRECTORY. — (CONTINUED). — PATRONISED BY ROBBERS, CYCLISTS, MOTORISTS, SPORTSMEN, COMMER-
CIAL TRAVELLERS AND THE THEATRICAL PROFESSION.

AUCKLAND.

**Waitomo Caves
Hostel.**

**Waitomo, Ruakuri,
and Aranui Caves,**

Reached by Daily Train
from
Wellington or Auckland.

THE Government Hostel
at Waitomo is situated
in a position from which the
caves can be conveniently
visited, and is connected by
Telephone with the local
Post and Telegraph Office.

TARIFF

Adults - 8s per Day.
Single Meals - 2s each.
Children between the ages of three
and 12 half-price.

Obtain your tickets from the Govt.
TOURIST BOOKING BUREAUX:
Wellington, G.P.O. Bldg.
(opposite Queen's Wharf)

Auckland: Custom Street.
NO EXTRA Charge for Booking.



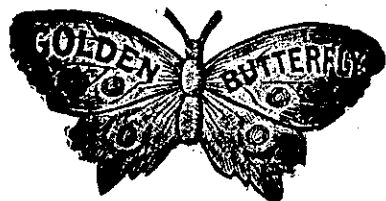
NEWMARKET HOTEL.

(Opposite Railway Station).
Only the Best Wines and Spirits kept
in stock.

F. MEYRICK Proprietor.
Telephone 2599.

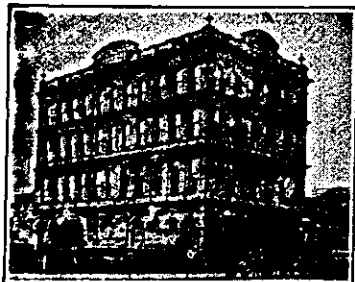
**Brown, Barrett
& CO'S**

DELICIOUS



BRAND

Pure Coffee



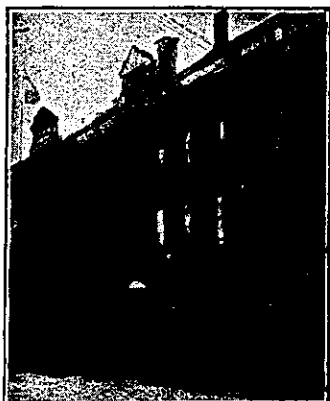
QUEEN'S FERRY HOTEL.
VULCAN LANE, AUCKLAND.

MR. ANDREW BEGGS, late of Wel-
lington, begs to announce that he has
taken over this well-known and popular
hostelry.

A HEARTY WELCOME TO ALL OLD
AND NEW FRIENDS.

SPRIGHT'S BEER ONLY ON TAP.
ALL WINES, SPIRITS AND LIQUORS
OF THE VERY BEST.

BE SURE YOU GET YOUR COPY
OF
**N.Z. SPORTING & DRAMATIC
REVIEW.**
PRICE 6d. ALL BOOKSELLERS.



IMPERIAL HOTEL.
FORT STREET, AUCKLAND.

Absolutely only the Best Wines and
Spirits kept in stock. Tariff Moderate.
Telephone No. 420.

JOHN KELLY Proprietor.



CALEDONIA HOTEL.
Corner of KARANGAHAPE ROAD and
SYMONDS STREET.

CAMPBELL-EHRENFRIED'S
SPARKLING ALE ON DRAUGHT.

Ales, Wines, and Spirits of the BEST
BRANDS ONLY, and all true
to label.

C. W. DUNMORE Proprietor.



**THE EDINBURGH CASTLE
HOTEL.**

UPPER SYMONDS STREET,
AUCKLAND.

YOU CAN'T MISS IT.—END OF
SECTION.

H. A. LLOYD Proprietor.

SHAKESPEARE HOTEL.

CORNER ALBERT AND WYNDHAM
STREETS, AUCKLAND.

GOOD ACCOMMODATION. TERMS
MODERATE.

BEST BRANDS OF LIQUOR
STOCKED.

Letters and Telegrams Attended to.

J. SCHOLLUM Proprietor.

WAVERLEY HOTEL.
QUEEN STREET, AUCKLAND.

Next to New Post Office, Railway
Station, Motor Car Stand, and Wharf.
First-class Table d'Hote. Convey-
ance meets Steamers and Trains.

Tariff: 8s per day; £2 2s per week.
Telephone 370.

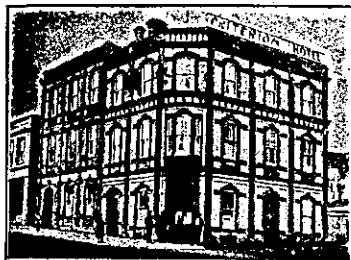
E. M. PAGE Proprietor.

OCCIDENTAL HOTEL.
VULCAN LANE,
AUCKLAND.

MRS. N. LYNCH Proprietress.
(Late of Clarendon and City Hotels,
Auckland.)

OXFORD HOTEL.
VICTORIA STREET WEST,
AUCKLAND.

J. C. GRIFFIN Proprietor.
FIRST-CLASS ACCOMMODATION.
TARIFF, 6/6 PER DAY.
SPRIGHT'S BEER ON TAP.



CRITERION HOTEL.
ALBERT STREET, AUCKLAND.

COMMERCIAL AND FAMILY HOTEL
(Newly Renovated).

EXCELLENT WINES AND SPIRITS.

Best Accommodation for Tourists.

D. J. MORRISON Proprietor.

STRAND HOTEL.
MECHANICS BAY, AUCKLAND.

J. H. MOORE Proprietor.

(Late Proprietor Ohinemuri Hotel,
Paeroa, for 12 years.)

BEST BRANDS OF ALES, WINES
AND SPIRITS.

MODERATE TARIFF.

TOURISTS AND TRAVELLERS
can obtain first-class accommoda-
tion at the
COMMERCIAL HOTEL,
ASHBURTON.

Newly renovated and refurnished
throughout. Electric light installed.
All modern conveniences. Two
Alcocks billiard tables. Sample
rooms in centre of town.

MRS. W. YOUNG Proprietress.

**CLIFTON HOUSE PRIVATE
HOTEL.**

WAVERLEY

EXCELLENT ACCOMMODATION FOR
THE TRAVELLING PUBLIC.

Tariff, 4s. 6d. per day; 20s. per week.
Permanents by Arrangement.

MRS. HARLAN Proprietress.

HUNTLY HOTEL.

HUNTLY.

This Hotel is now one of the largest
in the Waikato. All trains stop at
Huntly, and the Hotel is a few yards
from the Station. First-class Accom-
modation and Excellent Table.

L. B. HARRIS Proprietor.

AKAROA.

Visitors to Akaroa can obtain superior
PRIVATE BOARD AND RESIDENCE
at

**D. HANDSIDE'S PRIVATE BOARD-
ING ESTABLISHMENT,**
JOLLIE STREET, AKAROA.

(Opposite Pilkington's Motor Garage)
Close to Main Wharf.
Tariff Moderate. All Conveniences.

AWANUI.

AWANUI HOTEL.
AWANUI.

T. J. FLEMING Proprietor.

FIRST-CLASS ACCOMMODATION.

ONLY THE BEST OF LIQUORS
STOCKED.

We Print

Ledger or Account Books
Memorandums
Invoices Cards
Prize Tickets for Shows
Concert Programmes
&c. &c.

**Arthur Cleave & Co.,
LIMITED.**

Vulcan Lane Auckland.

ADDINGTON.

THE BLACK HORSE HOTEL.
ADDINGTON.

Near the Metropolitan Trotting Club's
Track and A. and P. Show Grounds.

First-class Accommodation. The
comfort of guests studied. Best of
everything. I have good stables, with
several good loose boxes. Intending
clients are advised to wire or write
at once.

C. G. CRADDOCK Proprietor.

BLLENHEIM.

JOHN BARRY'S
MARLBOROUGH HOTEL.
BLLENHEIM.

Good and Substantial Accommodation
with every comfort, at moderate
charges. A favourite house for good
whiskies and ales.

BULLS.

RANGITIKEI HOTEL.
BULLS.

EXCELLENT ACCOMMODATION FOR
THE TRAVELLING PUBLIC.
THE CHOICEST BRANDS OF
LIQUORS IN STOCK.

W. H. HOSKING Proprietor.

TAUPIRI.

TAUPIRI HOTEL.
TAUPIRI.

SPLENDID ACCOMMODATION.
CLOSE TO RAILWAY STATION.
THE VERY BEST LIQUORS IN
STOCK.

S. KEOGH Proprietor.

CAMBRIDGE.



NATIONAL HOTEL.
CAMBRIDGE.

Overlooking the Jubilee Gardens.
These fine, new, brick premises,
handy to the Railway Station and to
the Domain are now open to the public.

First-class accommodation for Guests
and the Travelling Public. The cuisine
is a speciality, under the personal su-
pervision of Mrs. Hamilton. The lounge
bar is available—the Best Wines, Spirits
and Beer only are served. Letters and
telegrams promptly attended to.

F. L. HAMILTON Licensee.
(Late of Opotiki.)

MASONIC HOTEL.
CAMBRIDGE.

NEW AND UP-TO-DATE BRICK
HOUSE, JUST REBUILT.
ALL MODERN CONVENIENCES.

LEADING FAMILY AND COMMER-
CIAL HOTEL.
UNDER PERSONAL SUPERVISION.
Phone No. 1.

N. MACKENZIE FORBES, Proprietor.
(Late of Wanganui.)



CENTRAL HOTEL.
CAMBRIDGE.

The Hotel offers superior accommo-
dation to Travellers and Tourists, and
is a First-class Family House in every
respect.

TARIFF MODERATE.

J. ROWE Proprietor.

New Zealand's ..
Brightest and Best
Illustrated Paper ..

is The N. Z.
**SPORTING AND DRAMATIC
REVIEW.**

Price 6d.—All Booksellers.