

NEW ZEALAND HOTEL DIRECTORY. (CONTINUED). — PATRONISED BY ROYALTY, MOTORISTS, SPORTSMEN, COMMERCIAL TRAVELLERS AND THE THEATRICAL PROFESSION.

TURAKINA.

BEN NEVIS HOTEL,
TURAKINA.

(Under New Management.)
MEALS AT ALL HOURS.
Good Accommodation for Tourists,
Travellers, and Boarders.
Good Stabling and Accommodation
Paddocks.
F. PAGET-JONES Proprietor.

**THE SPA AND LAKE
HOTELS,**
TAUPO.

Ideal health resort. Most bracing
climate in the North Island.
Hot mineral baths, including the
famous Kathleen Bath.
Trout fishing and shooting. Every
home comfort.
O. C. COWEN Proprietor.

THAMES.

SALUTATION HOTEL,
MARY ST., THAMES.

HARRY BROWNLEE, Proprietor.
Only SPEIGHT'S ALE on Draught.
Best Ale in Town.

"Caed Mille Falthe."

SHORTLAND HOTEL,
THAMES.

Three minutes from train and Short-
land Wharf. First-class Accommoda-
tion, Excellent Table. All liquors
fresh as the latest news. C. and E.
Ale on Draught.
W. CANNER Proprietor.
'Phone 145.

POST OFFICE HOTEL,
MARY STREET, THAMES.

Visitors will find here excellent ac-
commodation, and the very Best Wines,
Spirits, and Ales.
MRS. W. MORRISON .. Proprietress.

TE AWAMUTU.

TE AWAMUTU HOTEL,
TE AWAMUTU.

(Containing over fifty rooms.)
THE HOME FOR COMMERCIALS
AND TOURISTS.
Hot and cold baths, and every mod-
ern convenience. Best Dunedin ales on
draught.
Travellers by Main Trunk Express
specially catered for. 'Phone No. 2.
JAS. JACKSON Owner.

TIMARU.

SEA VIEW HOUSE,
(Private), TIMARU.

Four minutes from Post Office. Over
looking Caroline Bay. 36 rooms, includ-
ing Billiard and Smoke Rooms. Hot and
Cold Baths. Promenade roof with com-
manding view. Excellent Cuisine. Tariff
Moderate. 'Phone 224.
MRS. HYMAN Proprietress.

THE DOMINION HOTEL,
TIMARU.

JOHN REILLY Proprietor.
The most modern and up-to-date
Hotel in Timaru, overlooking Caroline
Bay and the Harbour. Everything new
inside and out. Absolutely fireproof.
Electric light, and replete with every
convenience. Bath-rooms, hot and cold
water on every floor. Moderate tariff.

BRIDGE HOTEL,
WHANGAHEU.

GUS. McDONALD
Has pleasure in announcing he has
taken over the above well-known Hotel,
and will supply all leading brands of
beer and spirits.
Extra paddocking accommodation is
now provided for drivers.

**RUTLAND LIVERY AND
BAIT STABLES,**
WANGANUI.

For all kinds of vehicles, including
motor cars, try the Rutland Stables.
Night porter always in attendance.
'Phone 120.
WINDELBURN BROS., Proprietors.

WHANGAREI.

WHANGAREI HOTEL,
WHANGAREI.

This fine House, just re-built in brick
and furnished in up-to-date style, now
offers unrivalled Accommodation to the
Travelling Public.
Sample Room. Hot and Cold Baths.
Two minutes' walk from Saltwater
Bathing Place.
Stabling second to none.
Best Wines, Ales and Spirits kept in
Stock.

SAMUEL McMAHON Proprietor.

SETTLERS' HOTEL,
WHANGAREI.

The New Settlers' Hotel is now open
to receive Commercial and the Travel-
ling Public.

Thirty spacious and well ventilated
Bedrooms. Luxurious Sitting and Com-
mercial Rooms. Fireproof structure.

ONLY THE VERY BEST BRANDS
OF LIQUORS STOCKED.

EXCELLENT CUISINE.
PERSONAL SUPERVISION.

Telegrams Attended to Promptly.

J. W. BURDETT Proprietor.
(Late of Kawakawa and Tangiteroria.)

WANGANUI.

FOSTER'S HOTEL,
TAUPO QUAY, WANGANUI.

Nearly opposite Town Bridge.
A HOME AWAY FROM HOME.
Tel. No. 46. P.O. Box No. 54.

J. R. FOSTER Proprietor.



PROVINCIAL HOTEL,
WANGANUI.

FIRST-CLASS ACCOMMODATION FOR
THE TRAVELLING PUBLIC.
ONLY THE BEST OF ALES, WINES
AND SPIRITS KEPT IN STOCK.
W. TUCK Proprietor.

WAIPIKURAU.

TAVISTOCK HOTEL,
WAIPIKURAU, HAWKE'S BAY.

The above Hotel has just been re-
built and refurnished throughout, and
is now replete with every convenience.
Waipukurau is the noted health resort
of the Province. Good fishing and
shooting. Excellent Accommodation for
the Travelling Public.

DONALD McLEOD Proprietor.
(Late Whangarei and Feilding.)

BE SURE AND GET YOUR COPY OF

New Zealand's ...
Brightest and Best
Illustrated Paper .
The N. Z.

SPORTING AND DRAMATIC
REVIEW.

Price 6d.—All Booksellers.

WANGANUI.

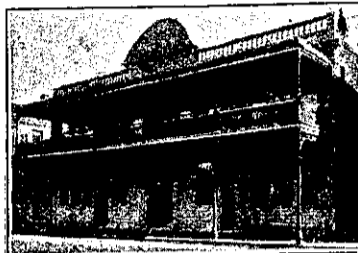
ALBION HOTEL,
WANGANUI.

The above Hotel is now under new
Management.
ONLY THE BEST WINES AND
SPIRITS STOCKED.
HORACE M. SOMERVILLE,
Proprietor.

MASONIC HOTEL,
(River Bank, below New Bridge)
WANGANUI.

EVERYTHING OF THE BEST.
A GOOD PLACE FOR A QUIET
EVENING.

ALLAN MANGUSON ... Proprietor.



McCARTHY'S HOTEL,
WANGANUI.

Immediately opposite Railway Station
and Wharves.
C. J. McCARTHY Proprietor.
Box 135. Telephone 147.

TRAMWAY HOTEL,
ADELAIDE ROAD, WELLINGTON.

MR FRANK McPARLAND
Begs to inform his friends and the
public that he has taken over this well-
known Hotel. Visitors can rely on get-
ting only the Best.

WELLINGTON.

PATRONISED BY ROYALTY.

HOTEL CECIL,
WELLINGTON, N.Z.

Opposite Government Railway Station
and Junction of City Tramways, an
Adjoining Parliamentary Buildings.

EXCELLENT CUISINE AND EVERY
MODERN CONVENIENCE.

P.O. Box 372. 'Phone No. 254.
Telegraphic Code: "Cecil."

TARIFF ON APPLICATION.
COOK'S COUPONS ACCEPTED.

MARGARET McPARLAND,
Proprietress.

THE EMPIRE HOTEL
(LIMITED).

THE LEADING & MOST CENTRAL
HOTEL IN WELLINGTON.

POST OFFICE HOTEL,
WELLINGTON.

Offers First-class Accommodation
at a Moderate Tariff. Excellent Cui-
sine. Telegrams: Post Office Hotel,
Wellington. Telephone 2827.
MRS. M. McVINISH.

CITY HOTEL

(Opp. Courtenay Place Tram Terminus).
WELLINGTON.

J. J. FIRTH Proprietor.
(Late of Caledonian Hotel).

Speight's and Staples' Ales on Tap.

PROVINCIAL HOTEL,
UPPER HUTT.

MRS. M. E. YOUNG Proprietress.
The Provincial offers all the comforts
of a first class home.
THE ONLY HOTEL IN THE
TOWNSHIP.
First Class Stabling Accommodation.
Wines, Beers and Spirits of the
Very Best.
Letters and Telegrams promptly
attended to.

WAITARA.

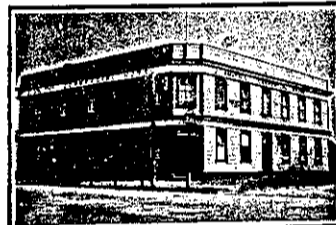
WAITARA HOTEL,
WAITARA.

THE RECOGNISED HOUSE FOR COM-
MERCIAL TRAVELLERS.
FIRST-CLASS ACCOMMODATION FOR
THE TRAVELLING PUBLIC, AT
MODERATE TARIFF.
HOT AND COLD PLUNGE AND
SHOWER BATHS.
Night Porter in Attendance.
Telephone, No. 7. P.O. Box 23.
Letters and Telegrams Promptly
attended to.
E. KERR Proprietor.

WAIKAWA.

COMMERCIAL HOTEL,
WAIKAWA.

Private Suites of Apartments and
every Convenience for the Ac-
commodation of the Public.
WINES, SPIRITS AND BEER OF THE
BEST QUALITY ONLY.
A FIRST-CLASS BILLIARD TABLE.
Stabling and Paddock Accommodation.
W. PELLOW Proprietor.

WAVERLEY.

COMMERCIAL HOTEL,
WAVERLEY.

E. A. HART Proprietor.
THE APPOINTED HOTEL FOR COM-
MERCIAL TRAVELLERS
First-class Accommodation for the
Travelling Public. Hot and Cold Shower
Baths. TARIFF: 6s. per day.

WESTPORT.

EMPIRE HOTEL,
WESTPORT.

The above well-known Hotel is the
recognised Home of Commercial and
Tourists. Recently renovated and re-
furnished, it affords all the comforts of
a home. In the centre of the town and
handy to wharf and trains. Wines,
spirits and ales of the highest order.

T. A. GIBBONS Proprietor.



PEARSON and CO., Ltd., Sole Agents
for Wellington district.

Printed and Published by ARTHUR CLEAVE of Mieralita, at his Registered
Printing Office, Vulcan Lane, Auckland, for the Proprietors, Arthur Cleave and
Co., Ltd.

THURSDAY, NOVEMBER 12, 1914.