

NEW ZEALAND HOTEL DIRECTORY.— (CONTINUED). — PATRONISED BY HOBBSEMEN, CYCLISTS, MOTORISTS, SPORTSMEN, COMMERCIAL TRAVELLERS AND THE THEATRICAL PROFESSION.

IDEAL LIGHTING

FOR

Houses, Farms, Public Buildings, etc.

Why continue to use Kerosene lamps, with their many inconveniences, when you can have a brilliant light—Safe, Clean, Economical and Reliable—by using the

Mercury Safety Air Gas.

As the name implies, this gas is absolutely SAFE, being non-explosive, non-poisonous, and does not vitiate the atmosphere of the room. A decided advantage over lamps, coal or acetylene gas.

Always available, night or day. Perfectly automatic. With all these advantages a bright and healthy home is assured, and you will be relieved from continuous, unnecessary, undesirable and costly labour.

You Can't Have a Bright Home Too Soon!

You Can't Enjoy a Pure Atmosphere Too Early!

We can meet your wants, and we are ready to carry out your wishes.

The N.Z. Mercury Safety Air Gas Co., Ltd.

24. Strand Arcade - - - AUCKLAND.

HOKITIKA.



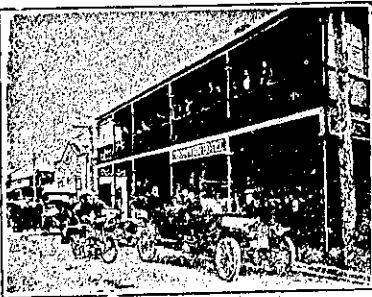
RAILWAY HOTEL, HOKITIKA.

First House from Railway Station. Good accommodation for the travelling public at moderate rates. The Railway Hotel is the most convenient for travellers of all classes, being practically at the Station gates. The accommodation is good, and every comfort of guests is studied. Everything of the Best is served and guaranteed.

HENRY JONES Proprietor.

BATSON'S HOTEL,

(Late Exchange) Revell St., HOKITIKA. Situated in the heart of the town, two minutes' walk from the Railway Station, one minute from the Post Office. Most up-to-date in every particular. The proprietor recently disposed of the Glacier Hotel at the Waiho, South Westland, which, during Mr. Batson's occupancy, was known to be the best equipped country hotel in Westland. Unrivalled accommodation at Batson's. Terms, 6s. per diem. Boarders by arrangement. Tel. 33. P.O. Box 13.—W. H. BATSON, Proprietor.



DOMINION HOTEL, HOKITIKA.

CHAS. DUNCAN Proprietor.

A Charming Resort for the Travelling Public. Visitors to the Lakes catered for. Special attention given to interior arrangements.

Tariff, 8s. per diem. P.O. Box 30. Telephone 124.

TAUHERENIKAU HOTEL,

THREE MILES FROM FEATHERSTON.

A. M. WILKINSON Proprietor.



KELLER'S HOTEL, HOKITIKA.

W. KELLER Proprietor.

First-class Accommodation for the Travelling Public. Only Best Brands of Wines and Spirits kept.

KIHIKIHI.

STAR HOTEL, KIHIKIHI.

Good Accommodation. Excellent fishing. Best brands of wines and spirits. Hancock's Special XXXX. The renowned Throgmorton Whisky. Martell's Brandy. Coaches meet all trains, including night express North and South.

JOHN BONNER Proprietor. (Formerly 5 1/2 years Shakespeare Hotel, Auckland.)

ALPHA HOTEL, KIHIKIHI.

The above well-known Hotel offers splendid accommodation for Tourists and Travellers.

Motorists will find this an ideal House in which to obtain refreshments. Only the best Ales, Wines and Spirits in stock. CHAS. O'BRIEN Proprietor.

LYTTELTON.

THE BRITISH HOTEL, (Late Cooksley's) LYTTELTON.

FIRST HOTEL ON RIGHT FROM WHARF AND RAILWAY STATION. SPLENDID ACCOMMODATION. VERY BEST OF LIQUORS AND ALES.

J. JACKSON Proprietor.

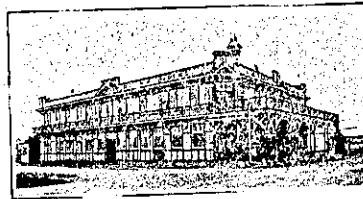
LITTLE RIVER.

LAKE FORSYTH HOTEL, LITTLE RIVER.

Comfortable accommodation, good table and very best brands of spirits, ales and wines. The Lake Forsyth Hotel is the bourne of the sportsman, being one hour's motor drive from Christchurch, and petrol is kept for motorists. Fishing and shooting on every hand. Conveyance meets every train.

J. G. WHITMORE Proprietor.

LEVIN.



GRAND HOTEL,

LEVIN. DONALD GREEN Proprietor.

This popular and well-known House has been taken over by Mr. D. Green, well known throughout the Manawatu. Every attention paid to Commercial and the Travelling Public. Motor Car for Hire. Garage for Guests' private cars. All Letters and Telegrams attended to. Wines and Spirits true to label.

MANAKAU HOTEL (BETWEEN OTAKI AND LEVIN). HECTOR A. ROSS Proprietor.

Having taken over the above hostelry I have decided that nothing but the very best of Wines, Ales and Spirits will be offered to the general public, and anyone wishing the choicest blends should call. Speight's Beer on tap. Good meals. Good accommodation.

MERCER.

RAILWAY HOTEL, MERCER.

First-class Accommodation for Tourists and Travellers. Wines and Spirits of the Best Brands only kept in stock.

W. C. PICKETT Proprietor.

MARTON.

MARTON HOTEL, MARTON.

J. HANNAN Proprietor.

(Late of Makutuku). Begs to state he has recently taken over this Popular House.

TARIFF MODERATE.

CLUB HOTEL, MARTON.

A FREE HOUSE. Luncheons from 11 a.m. on Sale Days. BEST WINES, SPIRITS AND BEER IN STOCK.

All Communications Promptly Attended to.

TARIFF 6s. PER DAY. ALFRED H. PARISH ... Proprietor.

RAILWAY HOTEL, MARTON JUNCTION.

Excellent accommodation. Night porter always in attendance. All Mail Trunk trains met. Liquors true to label. Speight's Ales drawn from the wood. Phone 42, P.O. Box 7. Marton Junction

C. E. GIBBONS Proprietor.

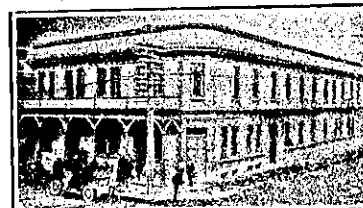


CLUB HOTEL, MARTONBOROUGH.

(Under New Management.) Excellent accommodation for travellers, boarders and visitors. A first-class and liberal table. Dining-room in charge of competent chef. Wines, Spirits and Ales of the best brands.

C. F. PRIEST Proprietor.

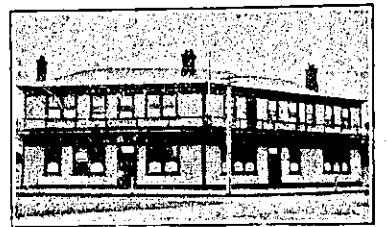
MASTERTON.



CLUB HOTEL, MASTERTON.

HERMANN CRASS Proprietor. (Late of Arcadia Hotel, Wellington, the Wellington Club, and the Union Company's Boats.) First-class table. First-class sample-rooms. Tariff, 8s. per day. Phone 57.

MANAIA.

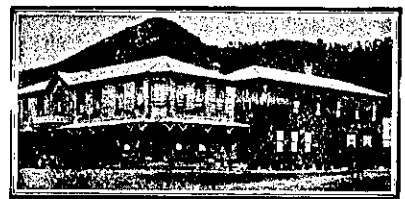


WAIMATE HOTEL, MANAIA.

JOHN RUSSELL Proprietor.

THE TOURISTS' RENDEZVOUS. SPLENDID ACCOMMODATION. FISHING AND SHOOTING.

MURCHISON.



DOWNIE'S HOTEL, MURCHISON.

J. STOCKTON Proprietor.

One of the most Popular and Up-to-date Hotels in the South Island.

Only Best Brands of Ales, Wines and Spirits kept. Excellent accommodation for visitors. Tourists specially catered for.

J. STOCKTON Proprietor.

COMMERCIAL HOTEL, MURCHISON.

The most popular hotel on the Nelson West Coast Trip. Every modern comfort. Sportsmen and Travellers catered for.

Ideal Fishing and Shooting. Letters and telegrams promptly attended to.

MRS. CHAPMAN Proprietress

MOTU.

THE MOTU HOTEL, MOTU.

Midway between the Bay of Plenty and Poverty Bay.

This Hotel has all the comforts of a modern home; hot and cold water, baths, gas, sitting-rooms, well-furnished bedrooms and billiard room. The Motu River, close to the Hotel, is an ideal trout stream. Superior brands of Wines and Spirits.

A. S. CAULTON Proprietor.

NAPIER.

TERMINUS HOTEL, NAPIER.

An ideal house for travellers, adjoining railway station.

First-class Accommodation. Moderate Tariff.

Liquors absolutely true to label.

G. F. BONNAR Proprietor.

FERNHILL HOTEL, MIDWAY BETWEEN NAPIER AND HASTINGS.

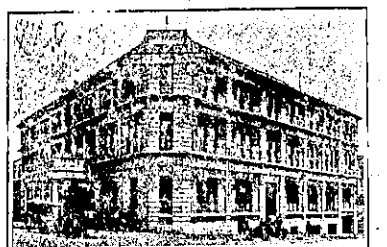
EVERY ATTENTION TO THE TRAVELLING PUBLIC. EVERYTHING OF THE BEST.

W. PUSCHELL Proprietor.

WAVERLEY HOTEL, GREENMEADOWS.

(Adjoining Napier Park Racecourse). T. C. BOYLE,

Begs to inform the Travelling Public that he has taken over the Waverley Hotel. Good Table, and the Best of Ales, Wines, Spirits, etc. Good stabling accommodation adjoining the Napier Park Racecourse.



CALEDONIAN HOTEL, NAPIER.

Now under the Proprietorship of FRANK RHODES, late of the Empire Hotel, Timaru.

Five minutes Post Office and Station. Accommodation for 100 guests. Excellent Cuisine. Moderate Tariff.

All Wines and Spirits true to label. Telegrams—"Rhodes, Caledonian, Napier."