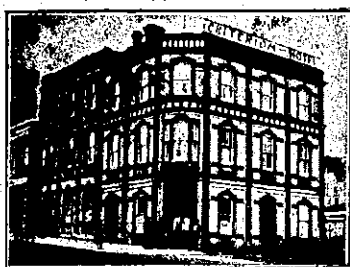


NEW ZEALAND HOTEL DIRECTORY.— (CONTINUED). — PATRONISED BY HORSEMEN, CYCLISTS, MOTORISTS, SPORTSMEN, COMMERCIAL TRAVELLERS AND THE THEATRICAL PROFESSION.

AUCKLAND.



CRITERION HOTEL,

ALBERT STREET, AUCKLAND.

COMMERCIAL AND FAMILY HOTEL.
(Newly Renovated.)

EXCELLENT WINES AND SPIRITS.
Best Accommodation for Tourists.

D. J. MORRISON Proprietor.

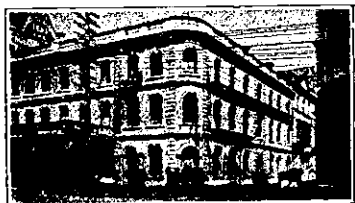


NEWMARKET HOTEL,

(Opposite Railway Station).

Only the Best Wines and Spirits kept in stock.

F. MEYRICK Proprietor.
Telephone 2599.



BRITISH HOTEL,

Corner of DURHAM & QUEEN STS.

J. K. PAGNI (late Western and Oriental Hotels, Wellington), begs to invite all his friends and general public to inspect the new improvements at the above Hotel, which is now the most comfortable and up-to-date in Auckland. Visitors will find First-class Accommodation. Nothing but the Best and Most Reliable Brands of Spirits, Wines, and Beer and Stout kept in stock. New Saloon Bar now open.

Metropolitan Hotel,

Queen Street.
Auckland.

M. BARRY,

Proprietor.

(Late of the Caledonian Hotel, Auckland, and Wanganui and Napier.)

QUEEN'S FERRY HOTEL,

VULCAN LANE, AUCKLAND.

MR. ANDREW BEGGS, late of Wellington, begs to announce that he has taken over this well-known and popular hostelry.

A HEARTY WELCOME TO ALL OLD AND NEW FRIENDS.

SPEIGHT'S BEER ONLY ON TAP.

ALL WINES, SPIRITS AND LIQUORS OF THE VERY BEST.

STRAND HOTEL,

MECHANICS BAY, AUCKLAND.

J. H. MOORE Proprietor.

(Late Proprietor Ohinemuri Hotel, Paeroa, for 12 years.)

Best Brands of Ales, Wines and Spirits.

MODERATE TARIFF.

PANMURE HOTEL,

PANMURE.

Imperial Ale straight from the Cask in splendid condition.

MODERATE TARIFF.

R. H. A. CUSHMAN Proprietor.

WYNARD ARMS HOTEL,

SYMONDS AND WELLESLEY STS.

A. H. ROGERS Proprietor.

Good Accommodation for Visitors. Good Table. Moderate Charges.

Secombe's XXXX Ale on Draught. Only the Best of Wines and Spirits Stocked.

'Phone 1327.

AMBERLEY.

CROWN HOTEL,

AMBERLEY.

Near the Saleyards and Business part of town.

Best accommodation in the district. Visitors receive every attention. Good table, airy rooms and very choicest liquors.

H. FRANKS Proprietor.

AKAROA.

HOTEL METROPOLE,

AKAROA.

The above Hotel is the most commodious in the district, recently built, and centrally situated. It has all the modern comforts of a superior home, and guests are studied in every particular. Excellent table d'hôte, and best brands of liquors. Speight's sparkling ales. Billiards and bagatelle. Stabling and large motor garage. Telephone 20.

WEDERELL BROS. Proprietors.

ILFRACOMBE HOUSE,

AKAROA (Opp. Main Wharf).

Superior accommodation. Patronised by leading families and tourists. Cars for Little River stop at entrance. Excellent cuisine. Motor garage. Telegrams promptly answered. 'Phone 24.

D. HANDSIDES Proprietor.

THE BRUCE HOTEL,

AKAROA (Opp. Main Wharf).

Excellent accommodation for tourists and travellers, and a favourite week-end house. Everything of the best. Starting point and terminus of Royal Mail cars. Launches, fishing, shooting, billiards, bathing and tennis. Letters and telegrams promptly attended to. 'Phone 14.

W. H. PARKIN Proprietor.

AWANUI.

AWANUI HOTEL,

AWANUI.

T. J. FLEMING Proprietor.

FIRST-CLASS ACCOMMODATION.
ONLY THE BEST OF LIQUORS STOCKED.

ADDINGTON.

STAR HOTEL,

LINCOLN ROAD, ADDINGTON.

Adjacent to the Metropolitan Trotting Track and Show Grounds.

I beg to notify my clients and the public generally that I have taken over the above Hotel.

The Hotel has been renovated and made up-to-date in every respect, and the Accommodation is second to none, with good table and excellent cuisine. Only the best brands of liquors stocked.

STABLES.

The Stables have been thoroughly renovated and yards provided. Clients wishing to secure stabling and accommodation are advised to book early.

E. L. BARNES Proprietor.

THE BLACK HORSE HOTEL,

ADDINGTON.

Near the Metropolitan Trotting Club's Track and A. and P. Show Grounds.

First-class Accommodation. The comfort of guests studied. Best of everything. I have good stables, with several good loose boxes. Intending clients are advised to wire or write at once.

C. G. GRADDOCK Proprietor.

ASHLEY.

THE ASHLEY HOTEL,

(Near the new Concrete Bridge).

ASHLEY.

One of the most up-to-date country Hotels in the Dominion. Splendid accommodation. Every modern comfort. Settlers and sportsmen catered for. Ideal fishing and shooting.

JAS. WHITTINGTON Proprietor.

BLenheim.

JOHN BARRY'S

MARLBOROUGH HOTEL,

BLenheim.

Good and Substantial Accommodation with every comfort, at moderate charges. A favourite house for good whiskies and ales.

BULLS.

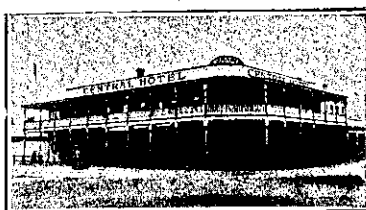
RANGITIKEI HOTEL,

BULLS.

EXCELLENT ACCOMMODATION FOR THE TRAVELLING PUBLIC.
THE CHOICEST BRANDS OF LIQUORS IN STOCK.

W. H. HOSKING Proprietor.

CAMBRIDGE.



CENTRAL HOTEL,

CAMBRIDGE.

The Hotel offers superior accommodation to Travellers and Tourists, and is a First-class Family House in every respect.

TARIFF MODERATE.

J. ROWE Proprietor.



NATIONAL HOTEL,

CAMBRIDGE.

Overlooking the Jubilee Gardens. These fine, new, brick premises, handy to the Railway Station and to the Domain are now open to the public.

First-class Accommodation for Guests and the Travelling Public. The cuisine is a speciality, under the personal supervision of Mrs. Hamilton. The Lounge Bar is available—the Best Wines, Spirits and Beer only are served. Letters and telegrams promptly attended to.

F. L. HAMILTON Licensee.
(Late of Opotiki.)

CHRISTCHURCH.

CITY HOTEL,
CHRISTCHURCH.

Most Centrally Situated Hotel in the City, facing Cathedral Square. Excellent Accommodation. Moderate Tariff. Guests' Comfort Always Studied.

Noted for its superior brands of Wines and Spirits, and Speight's Ales. Telephone 608. P.O. Box 558.

W. S. MITCHELL Proprietor.

EMPIRE HOTEL,

Triangle, CHRISTCHURCH.

(Opposite the Fountain.)



The Empire Hotel is in the centre of traffic. It has recently been modernised throughout. Night and day porters. Excellent cuisine and high-class liquors. Tariff, 6s. 6d. per day. Is luncheon a speciality. Telegrams promptly answered. Telephone 292.

T. W. WATTS AND SON, Proprietor.

MASONIC HOTEL,

CHRISTCHURCH.

Corner of Gloucester and Colombo Sts. Close to Theatre Royal, Coliseum, King's, His Majesty's, and The Cathedral.

Comfort of guests studied. Noted for excellency in liquors. Tariff, 6s. 6d.

C. LANGE Proprietor.

UNITED SERVICE HOTEL,

THE SQUARE, CHRISTCHURCH.

MR. JOHN MORRISON

(Late of the Grand, Royal, and Metropolitan Hotels, Auckland),

Begs to intimate to his Friends and the Public generally that he has taken over the well-known United Service Hotel, Christchurch, and will spare no pains to make it the leading house in the City.

IMPERIAL HOTEL,

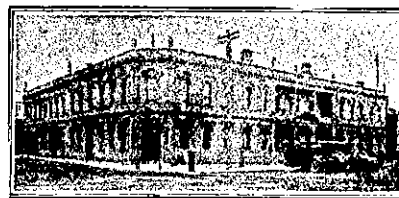
CHRISTCHURCH.

Corner of Barbadoes and St. Asaph Sts. Five minutes' walk from Cathedral Square, trams pass every ten minutes.

A quiet and superior home for visitors to Christchurch. Every comfort and convenience. Good table. Moderate tariff.

JAS. M. DICKSON Proprietor.

CHRISTCHURCH.—Continued.



WHERE TO STAY IN CHRISTCHURCH.

STOREY'S HOTEL,

Right Opposite Railway Station. Convenient to all parts of City and Suburbs.

Electric cars start from door.

G. S. JAMES Proprietor.

WHITE HART HOTEL,
CHRISTCHURCH.

I have much pleasure in intimating to my friends and the public generally that I have taken over the above well-appointed Hotel, in the centre of Christchurch, and would respectfully solicit your patronage. The White Hart has every advantage, being central, modern in construction and well furnished. Electrically lighted throughout, hot and cold water. Day and night porters. Wines, Spirits and Beers of superior brands. Letters and telegrams promptly attended to.

F. M. DREWITT Proprietor.



STAR AND GARTER HOTEL,
CHRISTCHURCH.

Corner Barbadoes St. and Oxford Ter. PAUL B. FLOOD, Proprietor. Everything first-class, and Ales, Wines and Spirits are of the Highest Order.



THE CARLTON CLUB HOTEL,

Bealey Avenue, CHRISTCHURCH.

Corner of Papanui, Fendalton and Riccarton Roads.

Near Hagley Park and the River Avon. Visitors to the Cathedral City can rely upon getting every comfort at this modern Hotel; out of the dust and turmoil of the city, and yet only two minutes by car from the centre of business.

Good table, best of wines and spirits. Tariff moderate. Letters and telegrams promptly answered. Telephone 1396.

MASSEY Proprietor.

DARGAVILLE.

CENTRAL HOTEL,

DARGAVILLE.

(Close to Wharf and Railway Station.) Is now under the Management of

MR. S. THOMPSON,

And the Travelling Public will find it one of the most Convenient Houses in the District.

GOOD ACCOMMODATION.

Telegrams Promptly Attended to.

Telephone 34.



NORTHERN WAIROA HOTEL,

DARGAVILLE.

EVERY POSSIBLE CONVENIENCE FOR THE TRAVELLING PUBLIC.

The BILLIARD ROOM is fitted with one of Alcock's Best Tables.

Launches available for trips to the Wairua Falls.

F. L. HODGES Proprietor.

HUNTLY HOTEL,

HUNTLY.

This Hotel is now one of the largest in the Waikato. All trains stop at Huntly, and the Hotel is a few yards from the Station. First-class Accommodation and Excellent Table.

L. B. HARRIS Proprietor.