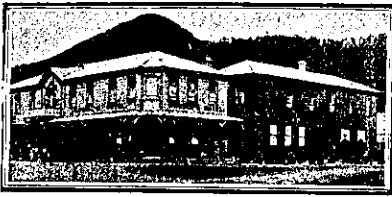


NEW ZEALAND HOTEL DIRECTORY.—(CONTINUED.) — PATRONISED BY HORSEMEN, CYCLISTS, MOTORISTS, SPORTSMEN, COMMERCIAL TRAVELLERS, AND THE THEATRICAL PROFESSION.



DOWNIE'S HOTEL,
MURCHISON.
J. STOCKTON Proprietor.

One of the most Popular and Up-to-date Hotels in the South Island. Only Best Brands of Ales, Wines and Spirits kept. Excellent accommodation for visitors. Tourists specially catered for.

J. STOCKTON Proprietor.

PALMERSTON NORTH.



PHOENIX HOTEL,
Rangitikei St., PALMERSTON N., is now under the management of S. PAUL. The house is being renovated to meet the ever-increasing trade, and every effort will be made to study the needs of the travelling public. Table under the special supervision of the Proprietor. Only Speight's Beer Drawn. Tele. No. 18

CAFE DE PARIS HOTEL,
PALMERSTON NORTH,
Every attention to Travellers. Only the Best Liquors.

J. S. FLETCHER Proprietor.
(Late of Central, Petone.)

THE CLUB HOTEL,
PALMERSTON NORTH.
Stands on two acres of land; frontage 165ft.; promenade balcony; contains 60 bedrooms, and private sitting-rooms, and 12 sample rooms. The appointed house for the Association of N.Z. and Australian Commercial Travellers

H. B. TUCKER,
Proprietor and Owner.

PRINCESS HOTEL,
TERRACE END, PALMERSTON NORTH.
The Travelling Public can rely on being supplied with the best liquors, comfortable bedrooms, and first-class table. Finest billiard room and table on the Coast. Terms moderate.

D. MACPHERSON Proprietor.

WHERE TO STAY.
POST OFFICE HOTEL,
Broad St., PALMERSTON NORTH. Having acquired the above Hotel, visitors to Palmerston can rely on every comfort at a moderate tariff. All Wines, Spirits and Ales true to label.

S. J. WHITEFORD Proprietor.
(Late Breakwater Hotel, New Plymouth).

PLEASANT POINT HOTEL,
PLEASANT POINT.
The favourite house for tourists, travellers and the local farmers. Large airy rooms, and every comfort at a moderate tariff. Splendid table, and best of liquors. Billiards. Good stabling.

EUGENE O'SULLIVAN .. Proprietor.

RAILWAY HOTEL,
PLEASANT POINT.
The above Hotel has just been erected on most modern architectural lines both inside and out. Electric light. Absolutely fire-proof. New furniture, and every sanitary convenience; hot and cold water, baths. Excellent cuisine, and liquors of the best procurable. Tourists, travellers and sportsmen will find in this house every modern comfort. Motor garage. New Alcock's billiard table.

F. NELLIGAN Proprietor.

COMMERCIAL HOTEL,
PAHIATUA.
MR. (TED) SULLIVAN wishes his old friends and the travelling public to know that he is now in the above well-known house. Everything of the best.

TED SULLIVAN Proprietor.

TAUHERENIKAU HOTEL,
THREE MILES FROM FEATHERSTON.
W. H. MacKAY Proprietor.

PAPAKURA.

GLOBE HOTEL,
PAPAKURA.
BOB PORTER Proprietor.
The leading Commercial Hotel in the district. Excellent accommodation for tourists, travellers and visitors. First-class table always kept. All meals 1s. Wines and spirits of the best quality. Popular Lion Ale on tap. Every attention and comfort. Afternoon tea for motoring parties a speciality. Good stabling and paddocks. Horses and traps for hire. Moderate tariff.

PATEA.

MASONIC HOTEL,
PATEA.
The Hotel has been recently renovated and furnished throughout and offers first-class accommodation to travellers. TARIFF, 4s 6d PER DAY.

E. SMITH Proprietor.

THE ALBION HOTEL,
PATEA.
FIRST-CLASS ACCOMMODATION FOR TOURISTS, FAMILIES AND TRAVELLERS. WINES, ALES AND SPIRITS OF THE BEST.

J. A. COOGAN Proprietor.

RAKAIA.

RAILWAY HOTEL,
RAKAIA (opp. Station).
B. DELARGEY (late of Commercial Hotel, Waikaiti), having taken over the above Hotel from Mr. John Affleck, wishes to notify his friends and public that every attention will be paid to the comfort of guests, who can also rely upon the quality of the brands of wines and spirits stocked. The best ales bottled and on draught.

B. DELARGEY Proprietor.



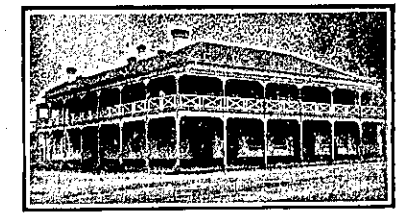
SOUTH RAKAIA HOTEL,
(Opposite Bank New Zealand),
RAKAIA.
HARRY TAYLOR Proprietor.

Having taken over this Hotel again after an absence of three and a-half years, I cordially invite my old friends and the public generally to give me a call, which I shall much appreciate. The Travelling Public will find my Hotel comfortable, clean, with the best of Liquors and Ales, and the charges moderate.

STRATFORD.



CLUB HOTEL,
STRATFORD.
C. DIAMOND (Late Albion Hotel, Patea) Desires to intimate to old friends and new that he has taken over the above popular hostelry. All liquors of the highest quality. Speight's Beer always on draught. First-class Accommodation for the Travelling Public. Tariff, 4s 6d per day.



THE STRATFORD HOTEL,
STRATFORD.
A most convenient house, with every accommodation. An excellent table. All the liquors are absolutely pure. Near the famous Mountain and the healthiest resort in New Zealand. Commercial and tourists are specially catered for.

MRS. W. ABBOTT Proprietress.

HAKATARAMEA.

TERMINUS HOTEL,
HAKATARAMEA.
First-class accommodation; gas; hot and cold water, and every convenience. Big trout fishing in the Waitaki, and splendid shooting. Terms moderate.

A. E. BRAGG Proprietor.

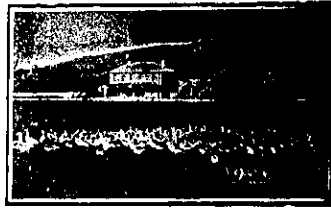
TAURANGA.



TAURANGA HOTEL,
TAURANGA.
FIRST-CLASS CUISINE AND ATTENTION.
ALES, WINES AND SPIRITS OF GUARANTEED QUALITY. Correspondence Promptly Attended to.
P.O. Box 37.
Telegraphic Address: "Tourist," Tauranga.

SAMUEL TANNER Proprietor
(Late of Waihi).

TE AUTE.



TE AUTE HOTEL,
Half-way between WAIPAWA and HASTINGS.
Best Wines and Spirits kept. Good table. Good Shooting and Fishing.

T. BURGESS Proprietor.

THAMES.

When you get a good tip keep it to yourself. In this case tell everyone that

W. CANNER
(Late of Shamrock, Auckland),
Has taken over the

SHORTLAND HOTEL,
THAMES.
Liquors as fresh as the latest news.

HOT SPRINGS HOTEL,
TARAWERA, NAPIER-TAUPO ROAD.
Under new management, possessing all comforts of a home. Splendid trout streams, abundance of game in season. Hot mineral baths, containing many curative properties. Good table, wines and spirits of the best brands. Overnight stopping place for H.B. Motor Co's. Mail Coaches between Napier and Taupo. Special arrangements for families wishing to spend a holiday in the country. Meals at all hours for motorists and travellers generally.

GEO. E. KIRK Proprietor.

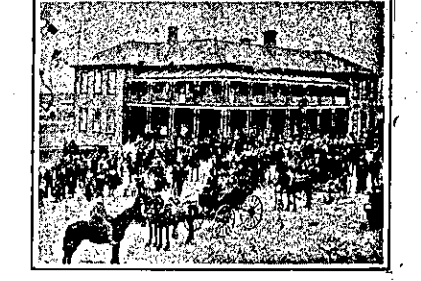
OTOROHANGA.



OTOROHANGA HOUSE,
OTOROHANGA.
(Opposite Railway Station).
NEAR ROUTE TO WAITOMO CAVES. HIGH-CLASS ACCOMMODATION.

W. H. CLAYTON Proprietor.

TE AROHA.
Telephone No. 1. P.O. Box 51.



PALACE HOTEL,
TE AROHA.
THE HOUSE FOR COMMERCIALS AND THE TRAVELLING PUBLIC. Hot and cold baths, electric light and every modern convenience. Excellent Cuisine. Wines and Spirits of Best Brands.

M. LAWLESS Proprietress.

FAMILY HOTEL,
OTAKI.
This house has been thoroughly renovated and furnished. Splendid accommodation for travellers. Only the best liquors.

W. E. MANNING Proprietor.

TEMUKA.

CROWN HOTEL,
TEMUKA.
(Opposite Post Office.)

Situated in the centre of the finest Trout Fishing District in New Zealand. The Hotel has just been enlarged, renovated and re-furnished throughout and offers First-class Accommodation for Tourists and others.
Hot and cold baths, Commercial, Smoke and Private Sitting Rooms. Well lighted and spacious Sample Rooms. Motor Garage. Good Stabling. Every attention.

C. COOMBS Proprietor.

THE EMPIRE HOTEL,
TEMUKA.

The new Empire Hotel is now ready to receive guests. It is one of the most modern and up-to-date hotels in the Dominion. It is absolutely fireproof, and has all the latest known conveniences, hot and cold water, bath-rooms, etc., etc. Three minutes' walk from the railway station. Only the best brands of wines and spirits kept.

JOB DAILY Proprietor.

THAMES.



PACIFIC HOTEL,
(Opposite Bank New Zealand),
THAMES.
Good Accommodation. Excellent Table. BEST BRANDS OF WINES, ALES AND SPIRITS. The proprietor guarantees what the label says the bottle contains.

W. L. DENNERLY Proprietor.

SALUTATION HOTEL,
MARY ST., THAMES.
HARRY BROWNLEE, Proprietor.

Only SPEIGHT'S ALE on Draught. Best Ale in Town.

GOVERNOR BOWEN HOTEL,
THAMES.
(Close to Wharf and Railway Station.)

FIRST-CLASS ACCOMMODATION. GOOD TABLE. ONLY THE BEST LIQUORS STOCKED.

T. R. NIXON Proprietor.
(Late of Tauranga Hotel, Tauranga, and Carpenters' Arms Hotel, Auckland.)

TIMARU.



SEA VIEW HOUSE,
(Private), TIMARU.
Four minutes from Post Office. Overlooking Caroline Bay. 35 rooms, including Billiard and Smoke Rooms. Hot and cold baths. Promenade roof with commanding view. Excellent Cuisine. Tariff Moderate. Phone 334.

MRS. HYMAN Proprietress.

EXCELSIOR HOTEL,
TIMARU.
Most centrally situated Hotel in Timaru. Adjoining Theatre Royal and Picture Theatre, near the G.P.O. and close to Railway Station. Tariff, 6s. 6d.

W. N. JONES Proprietor.

CLUB HOTEL,
TIMARU.
Close to Railway Station, and offering Excellent Accommodation to Travellers. Liberal Cuisine. Hot and Cold Baths. Best Brands of Liquors Stocked. Moderate Tariff.

E. WARD Proprietor.

CROWN HOTEL,
TIMARU.
Excellent accommodation for the travelling public. Centrally situated to station and wharf and Caroline Bay. Good table. Best liquors. Moderate tariff. All guests made comfortable.

R. BERTI Proprietor.