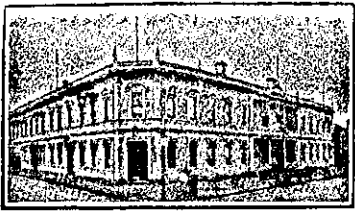


NEW ZEALAND HOTEL DIRECTORY.— (CONTINUED). — PATRONISED BY HORSEMEN, CYCLISTS, MOTORISTS, SPORTSMEN, COMMERCIAL TRAVELLERS, AND THE THEATRICAL PROFESSION.

CHRISTCHURCH.—Continued.

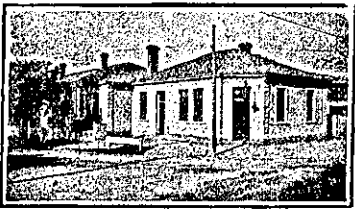


WHERE TO STAY IN CHRISTCHURCH.

STOREY'S HOTEL.

Right Opposite Railway Station. Convenient to all parts of City and Suburbs. Electric Cars start from the door.

Proprietor G. S. JAMES.



STAR AND GARTER HOTEL, CHRISTCHURCH.

Corner Barbadoes St. and Oxford Ter. PAUL B. FLOOD, Proprietor. Everything first-class, and Ales, Wines, and Spirits are of the Highest Order.



THE CARLTON CLUB HOTEL.

Bealey Avenue, CHRISTCHURCH. Corner of Papanui, Fendalton and Riccarton Roads.

Near Hagley Park and the River Avon. Visitors to the Cathedral City can rely upon getting every comfort at this modern Hotel; out of the dust and turmoil of the city, and yet only two minutes by car from the centre of business. Good table, best of wines and spirits. Tariff moderate. Letters and telegrams promptly answered. Telephone 1396. MASSEY Proprietor.

IMPERIAL HOTEL, CHRISTCHURCH.

Corner of Barbadoes and St. Asaph Sts. Five minutes' walk from Cathedral Square, trams pass every ten minutes. A quiet and superior home for visitors to Christchurch. Every comfort and convenience. Good table. Moderate tariff. JAS. M. DICKSON Proprietor

BURTON BREWERY CO., LIMITED.

PALMERSTON NORTH. ALES AND STOUT IN BULK OR BOTTLE. Brewed only from choicest Hops and Malt. To be obtained at all the PRINCIPAL HOTELS IN THE WELLINGTON DISTRICT.

UNITED SERVICE HOTEL, CHRISTCHURCH.

THE LEADING HOTEL IN THE CATHEDRAL CITY. UNDER VICE-REGAL PATRONAGE. Overlooking Cathedral Square. W. GRIGSBY Manager.

DARGAVILLE.



NORTHERN WAIROA HOTEL, DARGAVILLE.

EVERY POSSIBLE CONVENIENCE FOR THE TRAVELLING PUBLIC. The BILLIARD ROOM is fitted with one of Alcock's Best Tables. Launches available for trips to the Wairua Falls. F. L. HODGES Proprietor.

DARGAVILLE

THE CENTRAL HOTEL, DARGAVILLE.

(Close to Wharf and Railway Station) Is now under the Management of MR. S. THOMPSON.

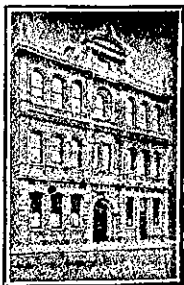
And the Travelling Public will find it one of the most Convenient Houses in the District.

GOOD ACCOMMODATION.

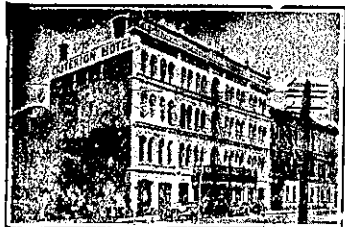
Telegrams Promptly Attended to. Telephone 34.

DUNEDIN.

GLADSTONE HOTEL, MACLAGGAN STREET, DUNEDIN. JOHN COLLINS Proprietor.



The most centrally-situated Hotel in the City. First-class Accommodation for Tourists, Travellers and Boarders. Suites of rooms for Families. Charges moderate. A special feature: 1s. Lunch from 12 to 2 p.m. Hot Cold and Shower baths. The very best Wines, Ales, and Spirits supplied.



CRITERION HOTEL, DUNEDIN.

These premises having been entirely rebuilt afford every comfort for the travelling public. Electric light and elevator. Excellent cuisine. Terms moderate. JAMES MURPHY Proprietor.

CITY HOTEL, PRINCES STREET, DUNEDIN.

This splendid centrally situated hotel is undoubtedly the best appointed house in Dunedin, and specially suited for Tourists and Commercial. TARIFF FROM 3s PER DAY.

P.O. Box 212. Letters and Telegrams Promptly Attended to.

WM. A. WOODS Proprietor.

SHAMROCK HOTEL, DUNEDIN.

TERMS MODERATE. GOOD ACCOMMODATION.

CHAS. BURRELL Proprietor (Late Gilmer Hotel, Greymouth).

GRIDIRON HOTEL, PRINCES ST., SOUTH DUNEDIN.

Just above the G.P.O. Trams stop opposite Hotel. Good Accommodation for Visitors and Travellers. Terms moderate. The Gridiron is known for its excellent liquors. Electric light throughout. SAMUEL W. GEDDES, Proprietor.

DANNEVIRKE

MASONIC HOTEL, DANNEVIRKE.

C. A. JENSEN Proprietor. FIRST-CLASS ACCOMMODATION FOR THE TRAVELLING PUBLIC. EVERY COMFORT AND CONVENIENCE.

DUNSTON.

HOY'S DUNSTON HOTEL (Late R. Dunlop.)

Under new management. Tariff 4s 6d. Visitors can rely upon every comfort at this modern hostelry. Civility, every attention and the best brands of wines, spirits and ales. Rail orders with promptitude. Alcock's full-sized billiard table. Good stabling.

ELTHAM.

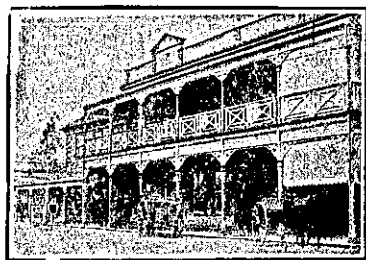


CORONATION HOTEL, ELTHAM.

The above Hotel has been thoroughly renovated, and, being under new Management, and giving every attention to business, begs to solicit a share of support from the surrounding district and travelling public. SPEIGHT'S ALE. GOOD LIQUORS STOCKED. A. NEWMAN Proprietor.

FORESTERS ARMS HOTEL, GREYTOWN NORTH.

E. G. White Proprietor.



CENTRAL HOTEL, ELTHAM.

GEO. W. TAYLER, Proprietor. First-class Accommodation for the Travelling Public. Only the Best Brands of Wines and Spirits kept.

FEILDING.



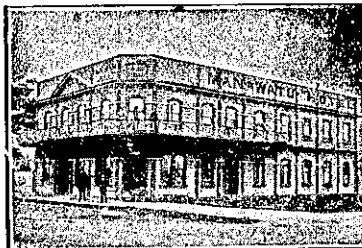
CHERRY'S EMPIRE HOTEL, FEILDING.

EVERYTHING NEW AND UP-TO-DATE.

CLOSE TO RAILWAY STATION.

Cuisine Excellent. Moderate Tariff.

FOXTON.



MANAWATU HOTEL, FOXTON.

PERCY LUMSDEN Proprietor.

This House has been the recognised rendezvous of the Theatrical Profession.

Visitors will find every Comfort and Convenience at this well-known house ONLY THE BEST BRANDS OF WINES, SPIRITS and ALES STOCKED.

FAIRLIE.

THE FAIRLIE HOTEL, FAIRLIE.

The leading house in the district, opposite the Railway Station, and adjoining the Mount Cook car service works. All tourists and travellers wire or write for rooms. Best attention, good table d'hote, and finest brands of liquors.

R. ROLLINSON Proprietor.

FEATHERSTON.

EMPIRE HOTEL, FEATHERSTON.

EXCELLENT ACCOMMODATION FOR TRAVELLERS. CLOSE TO RAILWAY STATION. LIQUORS THE BEST.

J. G. GIBSON Proprietor.

GISBORNE.

MASONIC HOTEL, GISBORNE.

JOHN PETTIE Proprietor.

First-class Accommodation for the Travelling public. Cuisine second to none. Only the Best Brands of Wines, Spirits and Ales, and all true to label.

TURANGANUI HOTEL, Close to Wharf, Railway and Post Office, GISBORNE.

RE-MODELLED AND RE-FURNISHED AND RENOVATED THROUGHOUT. Country Visitors and the Public will find this a most convenient Hotel, with Excellent Accommodation, Good Table, and Airy Rooms. TARIFF 6s PER DAY. Tel. 51. B. H. AISLABIE Proprietor.

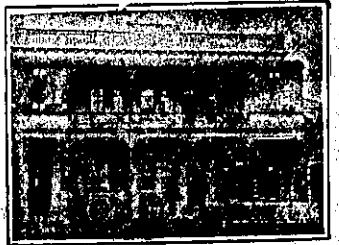
EAST OXFORD.

HAREWOOD ARMS HOTEL, EAST OXFORD.

J. McCLURE Proprietor. Every home comfort and convenience for visitors and commercials. Good table. Moderate charges. Hot and cold water, telephone, gas, etc. The very best wines, spirits and ales stocked.

GREYMOUTH.

THE ALBION HOTEL, GREYMOUTH.



Tel. Address: Albion, Greymouth. Phone 4. Box 28.

THE NEWEST AND MOST UP-TO-DATE HOTEL ON THE WEST COAST. R. DUNPHY Proprietor.

THE EMPIRE HOTEL, GREYMOUTH.

Centrally situated between Railway Station, G.P.O., Municipal Buildings, and Wharf. The Empire Hotel offers the travelling public the most comfortable Accommodation and a Good Table at moderate rates. The Empire being a "free house," patrons can rely upon getting the very best brands of Wines and Spirits and Draught and Bottled Ales. Proprietor JAMES S. VIAL.

BATSON'S HOTEL (late Exchange), Revell St., HOKITIKA.

Situated in the heart of the town, two minutes walk from the Railway Station, one minute from the Post Office. Most up-to-date in every particular. The proprietor recently disposed of the Glacier Hotel at the Waiho, South Westland, which, during Mr. Batson's occupancy, was known to be the best equipped country hotel in Westland. Unrivalled accommodation at Batson's. Terms, 6s. per diem. Boarders by arrangement. Tel. 88. P.O. Box 13.—W. H. BATSON, Proprietor.

KENNEDY BROS., LIVERY AND BAIT STABLES, GREYMOUTH.

The most up-to-date establishment on the Coast. Motor Cars, Cabs, Gigs, Buggies, etc., available any hour day or night. Drags and Carriages on hire. Wedding Parties specially provided for. Cabs meet all trains and boats.

GREYTOWN NORTH.



CLUB HOTEL, GREYTOWN NORTH.

R. DOHRN Proprietor. (Late Union Co.)

Visitors can rely upon getting every comfort. Wines and spirits only the best.

GREYTOWN HOTEL, GREYTOWN NORTH.

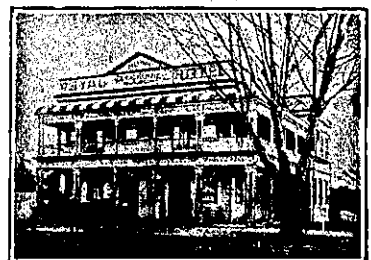
Mr. Sven Polson, late of Morrison's Bush, wishes to notify his friends and the public that he has taken over the above well known House. Visitors can rely on getting every attention. Only the best Wines and Spirits in stock. S. POLSON Proprietor.

GERALDINE.

THE CROWN HOTEL, GERALDINE.

Superior accommodation for families, commercial travellers and the general public. Private suites of apartments. Hot and cold water laid on at baths. MRS. MULHERN Proprietress.

HAMILTON.



ROYAL HOTEL, HAMILTON EAST.

Good Accommodation. Best Brands of Wines and Spirits. Good Stabling. Moderate Tariff. C. C. BAKER Proprietor. (Late of Whangarei).