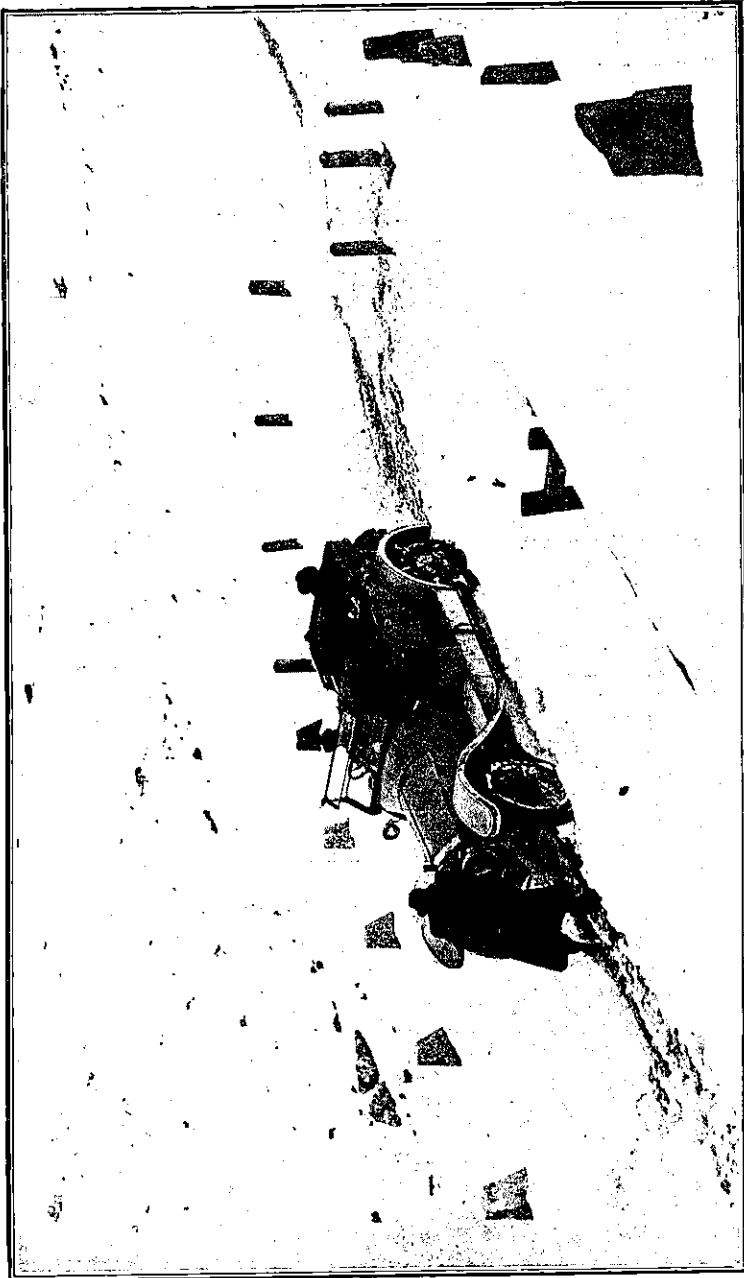


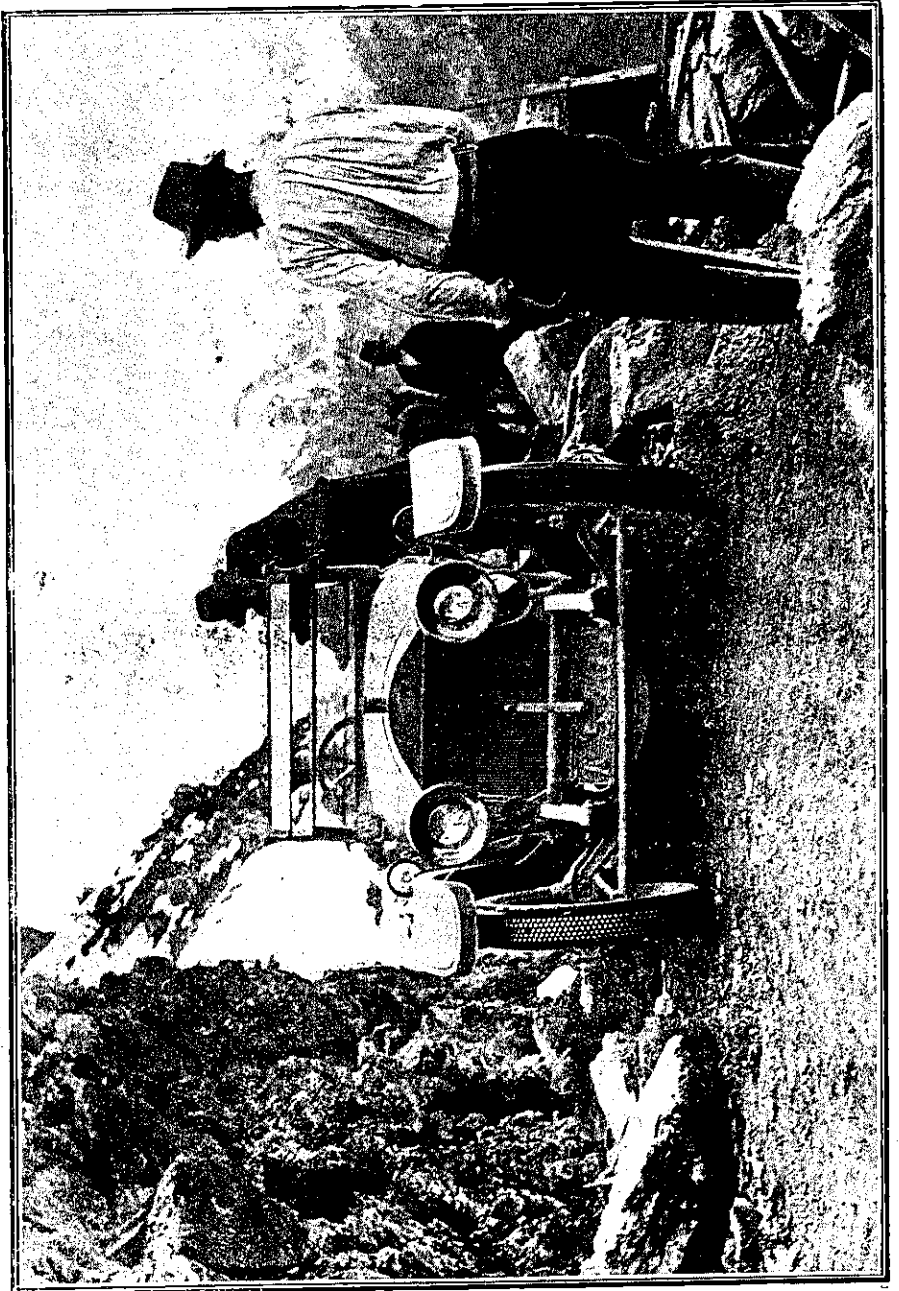
STORMING THE ALPS IN A MOTOR CAR—A REMARKABLE TRIAL IN A 30-35 hp. NAPIER MODEL.



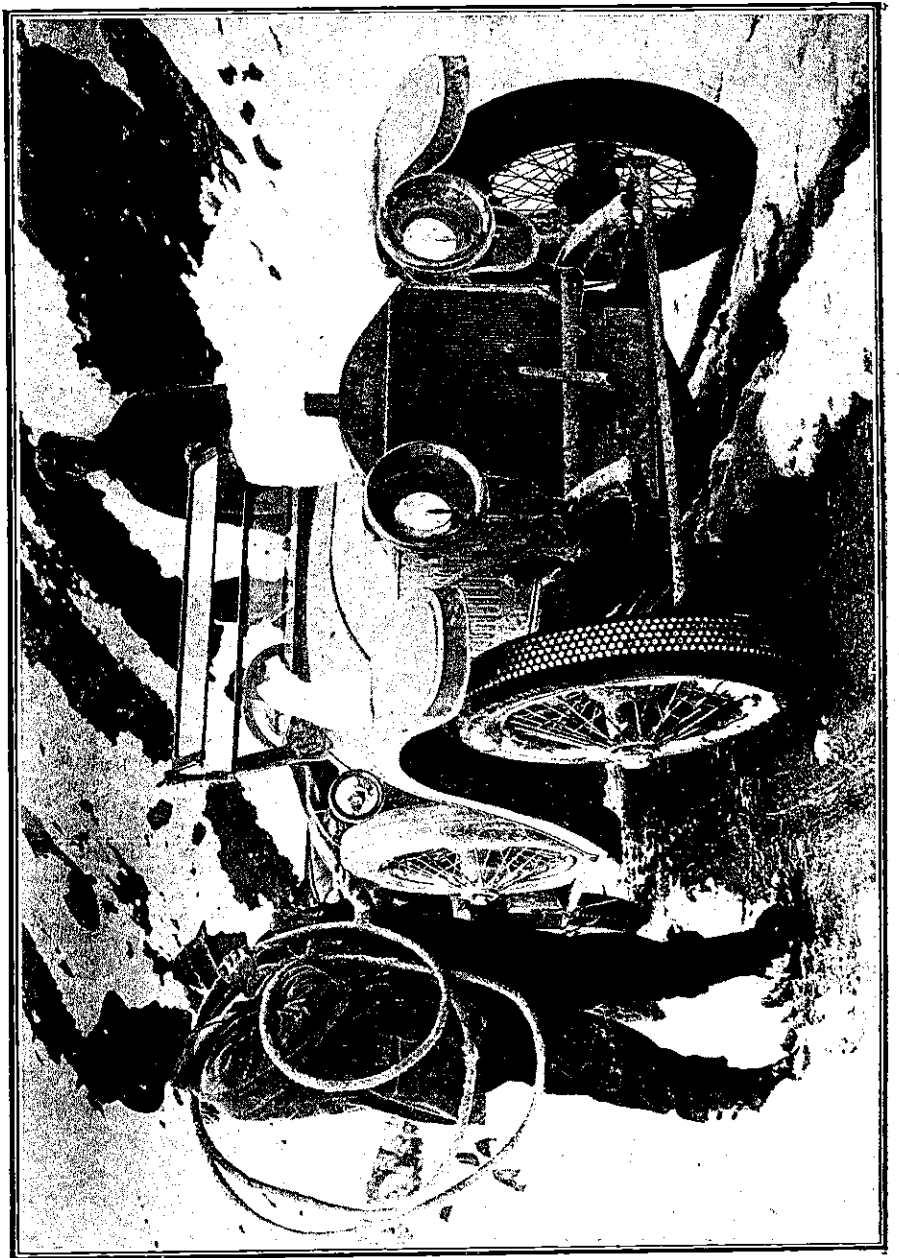
On Mount Cenis. A photograph taken from the snow bank during the Napier car's trip up the Alps.



A sharp corner on the Stelvio Pass, 8000 feet up. The Napier car engaged in climbing the Alps.



Negotiating an Alpine bye-road in the 30-35 h.p. Napier, the main road being blocked by an avalanche.



Mr. Macdonald, the driver of the 30-35 h.p. six-cylinder Napier, views the remaining 2000 feet on The Stelvio during the unique performance of storming the Alps.