

WELLINGTON—Continued.

WHITE HART HOTEL, MARTON
The Leading Family and Commercial Hotel in the District. First-class Accommodation. Nothing but the Best Brands of Wines and Spirits kept. Hotel lighted with Electric Light throughout. Spacious and Well lighted Sample Rooms. S. J. GIBBONS ... Proprietor.

CENTRAL HOTEL, OTAKI.
Mr Thomas Messiter begs to inform the travelling public and friends that he has lately taken over the above, which has been renovated and furnished throughout, and offers accommodation second to none in Otaki. All liquors of the best brands obtainable. Speight's XXX Ales on Draught. T. MESSITER ... Proprietor.

DEVINE'S EMPIRE HOTEL, MAIN STREET, PALMERSTON NORTH.
Patrons can rely on being supplied with all leading brands of Whiskies, Wines, and Brandy. Special feature: First-class luncheon from 12 o'clock to 3 p.m. for One ... Upstairs and dining-room under supervision of Mrs Devine. Up-to-date Billiard Room, under capable management. W. DEVINE (Late of Marton Hotel).....Proprietor

COMMERCIAL HOTEL LAMBTON QUAY, WELLINGTON, (Leading from Main Wharf top of Grey Street)
Ask for what you want and you will get it. If not in Stock, you will be told so. F. L. SMITH ... Proprietor (Late of Lyttelton and Christchurch).

PALMERSTON NORTH RAILWAY-STATION REFRESHMENT ROOMS.
W. MOORE ... PROPRIETOR. The railway passengers going either North or South should be acquainted with the fact that at Palmerston Station they can have a good hot luncheon. Railway guards will inform the traveller how much time he will have at Palmerston. All Express Trains remain ten minutes at Railway Station. Tea, coffee, sandwiches, cakes and biscuits. Only the best brands of ales, wines and spirits kept. Dunedin and Swan's Ale always on tap.

ALBERT HOTEL, WILLIS STREET, WELLINGTON.
DUGALD THOMSON (Late of Criterion Hotel, New Plymouth), Having taken over the above old-established Hotel, patrons may rely upon receiving every comfort and attention. Speight's beer only kept on draught. Only Liquors of the best brands kept in stock. Terms Moderate. Telephone No. 214. City trams pass door.

EMPIRE HOTEL, FIELDING.

MR J. WAREHAM, late of the Club Hotel, Stratford, has taken over the above Hotel, and has had the same thoroughly renovated and re-furnished throughout. The Hotel now offers every convenience and comfort for the travelling public. Best Brands of Liquors kept in Stock. Speight's Dunedin Ale always on tap. Stabling attached to Hotel.

POST OFFICE HOTEL, FOXTON.
This Hotel, having just been Rebuilt and Refurnished throughout, now affords the Best of Accommodation for Travellers, etc. The Best of Wines and Spirits kept in Stock. Speight and Co.'s XXX Ale drawn straight from the wood always on tap. W. F. GRAY.....Proprietor.

OCIDENTAL HOTEL, MASTERTON
The Sporting House of Masterton, Only CASE Spirits Sold. Best Dunedin Ales on Tap. CHARLES CRESS - PROPRIETOR (Late of Greytown and Wellington).

LEVIN HOTEL (To which is attached the Horowhenua County Club and the Levin Aerated Water Factory.)
D. HANNAN ... Proprietor. The Proprietor wishes to inform the travelling public that the above well and favourably-known Hotel has recently been enlarged and renovated, making it now one of the Best Hotels in the North Island, where patrons may rely on receiving every attention and the comforts of a home, while the tariff is moderate and the chef A1 Town Hall for theatrical and other performances, recently enlarged and improved. Best wines and spirits stocked. Dunedin and other celebrated colonial ales on tap. Lar's billiard and sample rooms. Cyclist Touring Club's "Rest," the visitors' resort. Horses and traps on hire. Beautiful view of Horowhenua Lake from balcony. Hot and cold water laid on. Separate apartments for families and ladies. Coaches meet all trains invalids, holiday makers, and persons seeking change of air cannot do better than patronise this establishment, as the climate of Levin is superb. Telegraphic address, "Levin Hotel, Levin."

CENTRAL HOTEL, WELLINGTON (Two Minutes walk from Queen's Wharf).
A. M. GOW (late of Dunedin).....Proprietor ONLY BEST BRANDS OF LIQUOR KEPT MODERATE CHARGES.

CHRISTCHURCH.

COCKAYNE'S LEVIATHAN HOTEL, CHRISTCHURCH.
This Magnificent Hotel is replete with all Modern Improvements, and contains 52 single and 20 double bedrooms, all of which are unusually airy and well-appointed. Public and Private Sitting-Rooms. Bathrooms and Lavatories fitted with Hot and Cold Water. THE COUSINE IS IN CHARGE OF AN EXPERIENCED CHEF, And will be found Equal to any in the Colony. Private Dining-room for Ladies. General Tariff on Application. MRS COCKAYNE ... PROPRIETRESS

CAVE ROCK HOTEL T. CLARK ... PROPRIETOR.
This hotel enjoys the best sea-side view in Sumner, and affords first-class accommodation to visitors. Terms: 6s per day. Arrangements by the Week.

CRITERION HOTEL NEXT THEATRE ROYAL, CHRISTCHURCH.
Best Beer, Wines, and Spirits Only Kept. GOOD ACCOMMODATION. Special Attention given to Theatre-goers during the intervals. W. BURNIP - PROPRIETOR.

RAILWAY HOTEL (Close to the Station). MANCHESTER-STREET, CHRISTCHURCH.
Tariff, 4/6 per diem, or 25/ per week. Excellent Stabling, Loose Boxes, etc. W. J. RAE.....Proprietor.

THE GLADSTONE HOTEL (Off Papanui Road), CHRISTCHURCH.
AN UP-TO-DATE HOUSE. Excellent Accommodation. Liquors of Special Quality and in Great Variety. H. PIPER PROPRIETOR

HAWKE'S BAY PROVINCE.
ALBION HOTEL NAPIER. THE SPORTING HOUSE OF NAPIER Now under entirely new Management. EXCELLENT ACCOMMODATION. LIBERAL TABLES. BEST LIQUORS. G. W. MUEHLMEISEN ... Proprietor



STORTFORD LODGE HOTEL, HASTINGS. OWEN NEWPORT, PROPRIETOR, Late of Brighton, Nelson.
Every convenience for the travelling and sporting public. 14 loose boxes. Telegrams and letters receive prompt attention.



RAILWAY HOTEL HASTINGS, PERCY MARTIN - Proprietor.
First-class Accommodation to the Travelling Public. Wines and Spirits of the best brands. First-class Billiard Room.

CALEDONIAN HOTEL HASTINGS-STREET, NAPIER.
A. O. BARNES.....Proprietor

STORTFORD LODGE HOTEL, HASTINGS.
OWEN NEWPORT, PROPRIETOR, Late of Brighton, Nelson. Every convenience for the travelling and sporting public. 14 loose boxes. Telegrams and letters receive prompt attention.

EMPIRE HOTEL, WAIPAWA G. OAKENFULL.....PROPRIETOR.
This Hotel is acknowledged to be the best between Napier and Wellington. Families and the travelling public can rely upon the best accommodation in the province. WINES, SPIRITS & BEER of the Best Quality only. GOOD STABLES. Large Number of Loose Boxes.

PACIFIC HOTEL, HASTINGS. A. ELLINGHAM (Late of Stortford Lodge Hotel), HAS taken over this well-known Hostelry, that has been presided over by Mr H. O. Caulton for the last twenty years. The Hotel will be re-furnished throughout and made thoroughly up-to-date as a Family and Commercial Hotel. Splendid Loose-box Accommodation for Visiting Trainers. Telephone Communication between Napier and Hastings. All Telegrams carefully attended to. ALF. ELLINGHAM.....Proprietor.



MASONIC HOTEL, DANNEVIKKE, H.B. THE LEADING FAMILY AND COMMERCIAL HOTEL IN THE DISTRICT.
First-class Accommodation. Nothing but the Best Brands of Wines and Spirits kept. Speight's Dunedin Beer always on draught. Commodious and well-lighted Sample Rooms. Porter meets all trains. Night Porter in attendance. Correspondence punctually attended to. P.O. Box 11. WILLIAM LIGHTProprietor.

WAIKURAU HOTEL, WAIKURAU. Tourists, Commercial and Families will find this Hotel replete and most up-to-date. Good trout-fishing in Waikurau and Tukituki Rivers. Shooting on lake three-quarters of a mile from Hotel. Stabling and Paddocks. R. HUNT.....Proprietor.

CRITERION HOTEL, NAPIER. First-Class Accommodation for Tourists, Families and Commercial Men. S. CHARLTON, PROPRIETOR.

COMMERCIAL HOTEL, WAI Private Suites of Apartments and every Convenience for the Accommodation of the public. WINES, SPIRITS & BEER of the Best Quality Only. A FIRST-CLASS BILLIARD TABLE. Good Stabling and Paddock Accommodation. W. PELLOWPROPRIETOR

PROVINCIAL HOTEL, CLIVE SQUARE, NAPIER. J. W. McDUFF.....PROPRIETOR
The above Hotel has been entirely rebuilt in brick, and furnished and fitted up in the latest and most up-to-date manner. Has fine rooms and well-ventilated bedrooms, with numerous sitting, smoking, and waiting rooms. The Billiard Room is the Best in the District, fitted up with two first-class tables, and under the charge of a competent marker. Best Brands of Wines, Spirits etc., Only Kept.

CARLTON CLUB HOTEL, HASTINGS. First-class Accommodation for Tourists' Families and Commercial Men. J. D. RIVERS, PROPRIETOR.

E. J. WARREN, (Formerly of the Havelock and [Taradale] Hotels). HAS taken over the Albert Hotel, Hastings, which is now replete with every comfort and convenience, and he will be glad to see all friends, both new and old. First-class Accommodation for Boarders and Travellers. Terms Moderate. Luncheon 12 noon to 2 p.m. Bob-John's Prize Ale on draught. Ward's Speight's and Manning's in bottle. Nothing but Best Brands of Wines and Spirits stocked. Telephone No. 11.

WOODVILLE REFRESHMENT ROOMS E. W. BUDDIOK ... PROPRIETOR.
Mail Trains wait twenty minutes for Lunch. The Railway passengers, going either North or South, should be acquainted with the fact that at the Woodville Refreshment Rooms they can have a good Hot Luncheon. Railway guards will inform the traveller how much time he will have at Woodville.

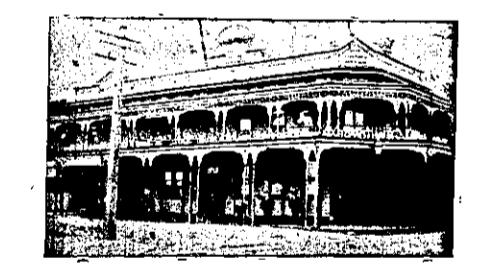
POST OFFICE HOTEL (Opposite Post Office, Main Street, Pahiatua.) T. HENLEY (late of Working Men's Club, Palmerston North), has taken over the above well-known Hostelry, which will now be found up-to-date in all its appointments. Telephone connection. All Wines, Spirits, and Ales guaranteed. Stabling accommodation. Terms moderate.

CLUB HOTEL WOODVILLE. First-class Accommodation for Families, Travellers, and Tourists. Well-lighted Sample Room. P. M. POOL ... PROPRIETOR. Telephone No. 1. P.O. Box 58.

TARANAKI PROVINCE COMMERCIAL HOTEL, STRATFORD. BEST OF ACCOMMODATION AT A VERY MODERATE RATE. HOT AND COLD BATHS. EXCELLENT TABLE KEPT. ALL LIQUORS AS SPEIGHT'S XXX ALES ON DRAUGHT. Ample Stabling. GEORGE DAVISON (late of Canterbury).....Proprietor

THE "TROCADERO" PRIVATE HOTEL CORNER OF EGMONT & ARRI-STs., NEW PLYMOUTH (One Minute from Railway Station).
Every Convenience Provided for the Comfort of the Travelling Public. 1/- Dinner (from 12 to 2) a Special Feature 1/- Meals served on Arrival of Trains and Steamers. Complete Fire Escapes. Ladies' Sitting Room. Hot, Cold, and Shower Baths. Terms: From 4/6 per day. Weekly as per arrangement. HALE AND CO. ... PROPRIETORS.

EMPIRE HOTEL, HAWERA (Corner of High and Princes Streets), MRS A. MAGUIRE.....Proprietress
Good Stabling, Billiards, Bath Room. Wines, Beers and Spirits Unsurpassed. Mrs MAGUIRE wishes to draw the attention of the Auckland Public to the 'NE SHILLING LUNCHEON provided. Tariff: 4/6 per day; only one price.



RED HOUSE HOTEL DEVON-STREET, NEW PLYMOUTH. EDWIN WHITTLE ... Proprietor
Rebuilt and refurnished, this well-known hostelry now contains every comfort for guests. The Liquors stocked are the choicest to be bought in the Market. PAUL'S XXXX ALES ON DRAUGHT.

THE METROPOLITAN Grand Central Coffee Palace and Restaurant CORNER OF DEVON & EGMONT STREETS, NEW PLYMOUTH Within one minute's walk of Railway Station, Post Office and Banks. (Recognized as the Leading Unlicensed Hotel in Taranaki.) The above is specially adapted for the Convenience and Comfort of the Commercial and Social Travelling Public, and in every way equal to a First-class Hotel. Lofty and airy bedrooms, Ladies' Tea Rooms, Drawing-room, Spacious Dining-room, Commercial Room, Hot, Cold, and Shower Baths, Convenient and Commodious Sample Rooms. THE KITCHEN IS UNDER AN EXPERIENCED CHEF. TERMS: Per Day, 4/6; Per Week, 25/.