

TARANAKI—Continued.

CLARENDON HOTEL, WAVERLEY.

THE BEST OF ACCOMMODATION FOR TRAVELLERS AND VISITORS.

Six Boomy Loose Boxes and Six Stalls. First-class Paddocking.

The Best Brands of Ales, Wines, and Spirits.

Telephone No. 6. P.O. Box No. 7.

B. T. BENNETT ... Proprietor.

RAILWAY HOTEL, HAWERA. W. GREIG ... Proprietor.

The Mail Train stays here ten minutes.

Meals provided to suit all Trains.

Accommodation Good and Tariff Reasonable.

CENTRAL HOTEL, EGDMONT STREET, PATEA.

L. HINTZE, Proprietor (late of Masonic Hotel, Wanganui). L.H. desires to notify the residents of Patea and surrounding districts, that he has taken over the above popular Hotel, where he will be happy to welcome old friends and make new ones.

The best brands of Ales, Wines, and Spirits kept in stock. Billiard Room fitted up with one of Alcock's best Tables. Good Stabling and Paddocking.

MASONIC HOTEL, Bedford Street, Patea.

MRS. KANE ... PROPRIETRESS. MRS. KANE begs to inform her many friends and the residents generally of Patea and district, that she has assumed the proprietorship, and that it will be her aim to uphold the past high reputation of the Hotel.

English and Colonial Ales and Stouts always on supply. Wines and Spirits of best brands only kept in stock. Prompt attention, civility and cleanliness in every department.

THE TROCADERO, STRATFORD.

UNDER ENTIRELY NEW MANAGEMENT.

THE TROCADERO has been renovated and re-furnished throughout, and has every up-to-date convenience. Suites of Rooms, Sitting and Commercial Rooms, Sample Rooms. Hot and Cold Baths, and every modern convenience. The Cuisine is under the direction of an experienced Chef. Dinners from Noon to 2 p.m.

CHARGES MODERATE.

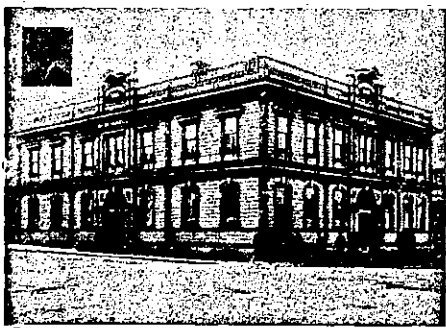
Telephone 51. C. H. PAYNTER, Proprietor.

TARANAKI HOTEL, BOUGRAM-STREET NEW PLYMOUTH.

E. F. BUOKTHOUGHT ... Proprietor. All Wines and Spirits stocked of the best quality.

Twenty-year-old Guaranteed Liqueur Whiskey a Specialty. PAUL'S XXXX ALES.

WANGANUI.



METROPOLITAN HOTEL, WANGANUI.

ALF. MITCHELL ... Proprietor. This commodious and well-furnished family and commercial hotel is almost opposite railway station and town wharves. It has a lovely promenade-roof which commands a splendid view of the town. The cuisine is in charge of an experienced chef. Alf. Mitchell's name is sufficient guarantee that nothing but the best of wines and spirits will be kept. Night porter always in attendance. Visitors can rely upon getting the best of attention together with civility. Letters and telegrams punctually attended to. P.O. Box 188. Telephone 84.

COMMERCIAL HOTEL, WAVERLEY.

THE COMMERCIAL HOUSE OF WAVERLEY.

EXCELLENT ACCOMMODATION, CUISINE AND LIQUORS.

CHAS. HARRISON ... Proprietor (Late of New Plymouth and Levin.)

THE NEW COMMERCIAL HOTEL, WANGANUI.

Excellent Accommodation for Tourists and Travelers. Best brands of Wines and Spirits kept in stock. DUNEDIN BEER ALWAYS ON TAP. Half-minute's walk from River Steamers. Telephone 289.

A. SUMMERS ... Proprietor

CHAVANNES' VICTORIA HOTEL, WANGANUI.

THE TOURIST'S HOTEL.

Choicest Wines, Spirits and Cigars.

Night Porter kept.

Cook's Coupons Accepted.

Write or wire for rooms to J. S. PALMER, Proprietor.

TIMARU.

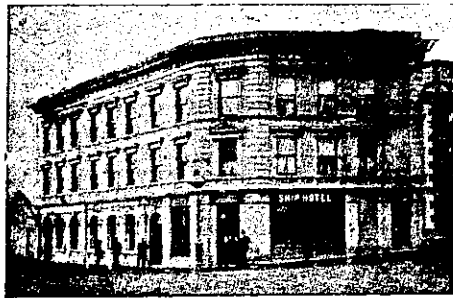
TIMARU HOTEL.

WILLIAM TOBIN

Has Leased the above Hotel, and will be glad to Receive Friends and Visitors to Timaru. First-class Accommodation. Well-appointed Billiard Rooms, Hot and Cold Water Baths.

The Best Brands of Spirits and Ale in St. ck. Terms Reasonable.

WM. TOBIN ... PROPRIETOR



STOP AT SHIP HOTEL, TIMARU.

One minute from Railway Station and Wharf. Accommodation and attendance second to none in the colonies. Night Porter in attendance. Special Arrangements for Football and Cricket Teams and Theatrical Companies.

B. J. McKENNA ... PROPRIETOR

CLUB HOTEL, TIMARU.

This Hotel has been renovated throughout, and now offers excellent Accommodation to the Travelling Public. Local and XXXX Beer always on Tap. Walker's Special Whisky on Draught. Sample Rooms in connection with premises.

JOHN DOBE ... PROPRIETOR

DUNEDIN

BOWLING GREEN HOTEL, CORNER OF FREDERICK AND CUMBERLAND STREETS, DUNEDIN.

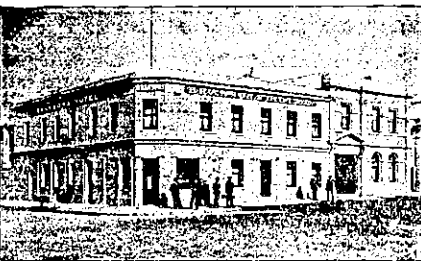
W. D. WYATT, late of Wellington, begs to inform his Friends and Country Visitors that he has taken the above well-known Hotel, which has been thoroughly Renovated and Re-furnished, and is now in a position to offer his Patrons First class Accommodation.

TERMS MODERATE. NOTED HOUSE FOR THE BEST WINES & SPIRITS

THE IMPERIAL, FAMILY AND COMMERCIAL HOTEL, PRINCES-STREET, SOUTH, DUNEDIN.

J. FOGARTY (late of Universal Hotel, Dunedin, and Oxford Hotel, Christchurch), MANAGERESS.

J. BRENNAN ... PROPRIETOR.



SEE! SEE! SEE! AT THE CORNER OF GREAT KING AND ST. ANDREW STREETS, DUNEDIN,

BRANSON'S HOTEL.

The outlay is enormous, and is an important addition to the city.

VERDICT—

BRANSON'S HOTEL

May safely be commended to Visitors as an Hotel where they will receive everything that will contribute to their safety, comfort and enjoyment.

CHAS. B. M. BRANSON ... Proprietor.

GLADSTONE HOTEL, MACLAGGAN STREET, DUNEDIN.

JOHN COLLINS ... PROPRIETOR (Late of A1 Hotel, Pelichet Bay.)

The most centrally situated Hotel in the City. First-class accommodation for Tourists, Travelers and Boarders. Suites of rooms for families. Charges moderate. A Special Feature: 1/- Luncheon from 12 to 2 o'clock. Hot, cold, and shower baths. The very best of Wines, Ales, and Spirits supplied.

GRILIKON HOTEL, PRINCES-STREET, SOUTH, DUNEDIN.

This popular and centrally-situated Hotel has been renovated from floor to ceiling, and re-furnished throughout with the newest and most up-to-date furniture. Suites of rooms for families. Charges strictly moderate.

Hot, Cold, and Shower Baths. The very best of Wines, Ales, and Spirits supplied. A Night Porter in attendance. Accommodation for over One Hundred Guests.

L. CLANCY ... PROPRIETOR.

NELSON.

COACH AND HORSES HOTEL.

G. M. MATHIESON, formerly of the Masonic Hotel, Havelock, and White Hart Hotel, Richmond, has taken over the above centrally situated and commodious premises, where it will be his pleasure to make every provision for the wants and comforts of all patrons. The interior of the house has been thoroughly renovated, and the Coach and Horses will be found one of the most comfortable hostels in Nelson Province. Terms moderate. The best of liquors only kept. Good stabling.

MASONIC HOTEL, NELSON. CHANGE OF OWNERSHIP.

This long-established Hotel, which has always been the Headquarters in Nelson for Tourist and Commercial Travellers, has recently been purchased by Mr H. Bargent.

The Hotel has been thoroughly Renovated and all the Rooms are being refitted in modern style. No effort will be spared to make all visitors thoroughly comfortable.

PICTON

FEDERAL HOTEL, PICTON, N. Z.

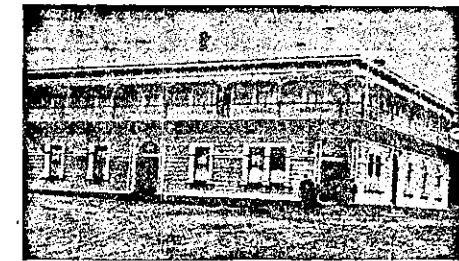
T. J. STOREY ... Proprietor (Late Representative Booth, Macdonald & Co.)

THE Building is entirely New and of br.-E, with all Modern Appliances and Conveniences. The Sanitary Arrangements and Ventilation have been specially studied, and the house is First-class in every detail.

VISITORS to Picton will find that no effort will be spared to afford them comfort, whilst the Tariff is Most Moderate.

LETTERS AND TELEGRAMS RECEIVED PROMPT ATTENTION.

First-class Billiard Table. Hot and Cold Baths. Porter Meets all Trains and Steamers.



TERMINUS HOTEL, PICTON

HARRY BRADY, PROPRIETOR.

Close to Railway Station, Post Office and Wharf. Letters and Telegrams promptly attended to.

BLLENHEIM.

MASONIC HOTEL, BLLENHEIM

Is Central, Popular, and Convenient; does Commercial Business; has Splendid Appointments; Hot and Cold Baths; one of Alcock's Match Tables; and is the House selected by the N.Z.O.T. Club. MODERATE TARIFF.

J. PENNEY ... PROPRIETOR.

GISBORNE.



THE GISBORNE HOTEL, Corner of CHILDERS ROAD and LOWE STREET, GISBORNE.

The above Hotel, re-built on most modern lines, is centrally and conveniently situated, being within two minutes' walk of the Post Office, Railway Station and Wharf. A balcony of 100 feet by 8 feet, surrounds the building, affording an excellent view of the Harbour and Shipping, and offering easy egress in the event of fire. Hot, Cold, and Shower Baths. From its quiet situation is specially adapted for Tourists and Families.

J. H. MARTIN ... Proprietor.

HOKITIKA.

OCCIDENTAL HOTEL, WHARF STREET, HOKITIKA.

Centrally and conveniently situated, offering the best accommodation at a moderate tariff.

Wines, Spirits, Ales etc. of the best quality procurable. Cuisine excellent, under the personal supervision of Mrs Woolhouse.

TARIFF—5/- per diem, £1 1/- per week.

MRS N. M. WOOLHOUSE, PROPRIETRESS

REEFTON.

ROXBOROUGH'S RAILWAY HOTEL, BROADWAY REEFTON.

The Accommodation throughout is all that can be desired. Excellent Cuisine and Dining Room Appointments. Wines, Spirits, and Ales defy competition.

Hot, Cold, and Crescent Shower Baths.

Tariff Strictly Moderate.

Visiting Cyclists can rely upon receiving every attention.

J. ROXBOROUGH, Proprietor.

GLADSTONE HOTEL, REEFTON.

This Hotel, having been thoroughly renovated and re-furnished throughout, now offers Superior Accommodation at a moderate tariff.

Best Brands of Wines, Spirits, Ales, etc.

TARIFF: 4/6 PER DIEM.

R. DUMPHY ... Proprietor

WESTPORT.



EMPIRE HOTEL, WESTPORT. H. McMASTER ... PROPRIETOR (Late Chief Steward White Star Line and N.Z. Shipping Company.)

Recently Refurnished and Renovated throughout. This Hotel will be found to offer every Modern convenience for Commercial Travellers and Visitors. Night Porter kept. Cuisine a Specialty. Two Alcock's Billiard Tables. Six Sample Rooms, Good Stabling.



GRAND HOTEL, PALMERSTON STREET, WESTPORT.

H. NAHR ... PROPRIETOR

NERVOUSNESS.

LOSS OF ENERGY and STRENGTH, DEPENDENCY and DEBILITY.

A Gentleman having tried in vain every advertised remedy, and at last discovered a SIMPLE METHOD of SELF CURE, will forward the same, free of charge, to anyone interested.

Address: A. MINER, G.P.O., SYDNEY.