

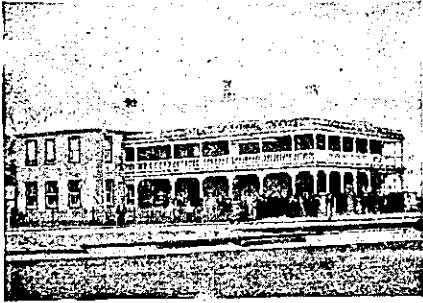
AUCKLAND PROVINCE.—Continued

STAR HOTEL
KARANGAHAPE ROAD, NEWTON.

Opposite Ponsonby Reservoir.

FINEST BRANDS OF BEERS, WINES AND SPIRITS.

JAMES McLEOD Proprietor



WAIPA HOTEL
NGARUAWAHIA.

(Close to the Railway Station).

Best Brands of Wines and Spirits only kept.

FIRST-CLASS ACCOMODATION.

Hot and Cold Baths. Good Billiard Table. Coach passes for Waingaro Hot Springs twice a week.

P. GUTHRIE Proprietor.



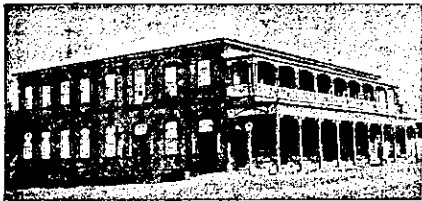
MASONIC HOTEL
TAURANGA.

Commercial Gentlemen and Tourists will find here every requisite. Coaches call here daily for all the surrounding townships.

FIRST-CLASS SAMPLE ROOM.

SPEIGHT'S BEER ONLY ON DRAUGHT.

THOMAS FLOYD Proprietor.



GRAND HOTEL
TE AROHA.

Directly opposite the Sanatorium and commanding the most Charming Prospect of the Domain.

This New and Commodious Hotel is replete with every convenience requisite to the comfort of the travelling public.

First-class Cuisine, Hot, Cold, and Shower Baths.

Coaches attend all trains.

Letters and telegrams promptly attended to.

J. W. SHAW Proprietor.
Late of Commercial Hotel Paeroa, and British Hotel, Auckland.

PRINCE ARTHUR HOTEL
(Late Oram's)
AUCKLAND.

CENTRALLY SITUATED.
TARIFF: FROM 5/- PER DAY.

HYDRAULIC LIFT.

SELECT SUITES OF ROOMS FOR VISITORS AND TOURISTS.

M. W. COOKE Proprietor.

LADY BOWEN HOTEL
BROWN STREET, THAMES.

THREE MINUTES' WALK FROM RAILWAY STATION.

GOOD ACCOMODATION.

WINES AND SPIRITS.

M. B. C. GILES Proprietor.



TELEPHONE 490.

P.O. BOX 365.

CENTRAL HOTEL

VICTORIA STREET EAST, AUCKLAND.

JAMES ROLLESTON - Proprietor.

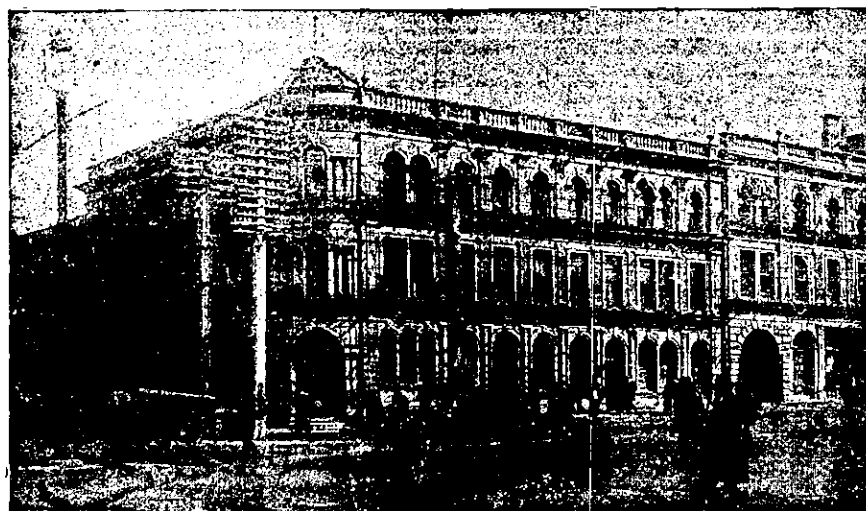
Late of Hikurangi and Coromandel.



Kidd's Commercial Hotel

S. J. ATKINS, Proprietor.

SHORTLAND & HIGH STREETS.



WAITEMATA HOTEL

CORNER QUEEN & CUSTOM STREETS, AUCKLAND.

Close to the Wharf and Railway Station.

VISITORS WILL FIND EVERY COMFORT & CONVENIENCE.

JOHN ENDEAN, Proprietor.

TELEPHONE NO. 589.



HOBSON HOTEL
CORNER OF
HOBSON AND VICTORIA STS.
AUCKLAND.

Wines and Spirits of Best Quality.

M. FOLEY Proprietor.



ROYAL GEORGE HOTEL
NEWMARKET.

CHRIS. LEEK Proprietor.

Mr Chris. Leek begs to notify his numerous friends that he has taken the above Hotel, which has been thoroughly renovated, and will afford excellent accommodation for boarders and country visitors.

Buses and trams pass the door every three minutes. Best Brands of Wines and Spirits kept. Terms Moderate.



WHANGAREI HOTEL
WHANGAREI.

This fine House, just re-built in brick and furnished in up-to-date style, now offers unrivalled accommodation to the travelling public.

Sample Room. Hot and Cold Baths. Two minutes walk from Saltwater Bathing Place. Stabling Second to None.

Best Wines, Ales and Spirits Kept in Stock.

SAMUEL McMAHON Proprietor.

ROYAL HOTEL

RAGLAN,
Favourite Seaside Resort for Tourists.

The Proprietor begs to notify the Public that he has entered into possession of the above Hotel, which is one of the most comfortable Hostels in the Colony. No expense has been spared to meet the requirements of Tourists, Families and Commercial Travellers

FIRST-CLASS BILLIARD TABLE.

BATHING HOUSES, SAMPLE ROOMS.

STABLING, Etc.

FINEST BRANDS OF LIQUORS ONLY.

TABLE A SPECIALTY

Telegrams Promptly Attended to.

J. A. NORRIS (late U.S.S. Co.)..... Proprietor

EDINBURGH CASTLE HOTEL

UPPER SYMONDS STREET,

(Opposite Khyber Pass), Auckland

SECCOMBE'S XXXX BEER.

Every Convenience, combined with Civility and Comfort, for Country Visitors and Boarders.

FIRST-CLASS BILLIARD ROOM.

GOOD STABLING.

P. QUINLAN... .. Proprietor.

EPSOM HOTEL

EPSOM.

H. J. SYMS Proprietor.

Large and Roomy Hotel, situated opposite Alexandra Park, on the Epsom Road.

Every Convenience for Visitors and Boarders.

Best Brands of Wines and Spirits kept.

Seccombe's Sparkling Ale on Draught.

Good Stabling.

PAPAKURA HOTEL
PAPAKURA.

Notice to Cyclists, Footballers, and others.—Your old friend Thos. McEwin has taken over the above Hotel and will be pleased to see all old faces. Splendid Accommodation and Cuisine. Large Rooms for use of Clubs.

THOS. McEWIN Proprietor.