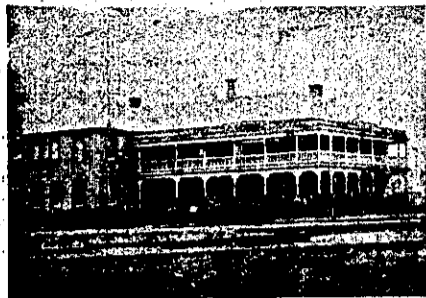


AUCKLAND PROVINCE.—Continued

STAR HOTEL,
KARANGAHAPE ROAD, NEWTON.
Opposite Ponsenby Reservoir.

**FINEST BRANDS OF BEERS, WINES,
AND SPIRITS.**

JAMES McLEOD Proprietor



WAI PA HOTEL,
NGARUAWAHIA.
(Close to the Railway Station).

Best Brands of Wines and Spirits only kept.
FIRST-CLASS ACCOMMODATION.
Hot and Cold Baths. Good Billiard Table. Coach
passes for Waingaro Hot Springs twice a week.
P. GUTHRIE Proprietor.



MASONIC HOTEL,
TAURANGA.

Commercial Gentlemen and Tourists will find
here every requisite.
Coaches call here daily for all the surrounding
townships.
FIRST-CLASS SAMPLE ROOM.
SPEIGHT'S BEER ONLY ON DRAUGHT.
THOMAS FLOYD Proprietor.



GRAND HOTEL,
TE AROHA.

Directly opposite the Sanatorium and com-
manding the most Charming Prospect of the
Domain.

This New and Commodious Hotel is replete
with every convenience requisite to the comfort
of the travelling public.
First-class Cuisine, Hot, Cold, and Shower
Baths.
Coaches attend all trains.
Letters and telegrams promptly attended to.
J. W. SHAW Proprietor.
Late of Commercial Hotel Paeroa, and British
Hotel, Auckland.

PRINCE ARTHUR HOTEL,
(Late Oram's)
AUCKLAND.

CENTRALLY SITUATED.
TARIFF: FROM 5/- PER DAY.

HYDRAULIC LIFT.

**SELECT SUITES OF ROOMS FOR VISITORS
AND TOURISTS.**

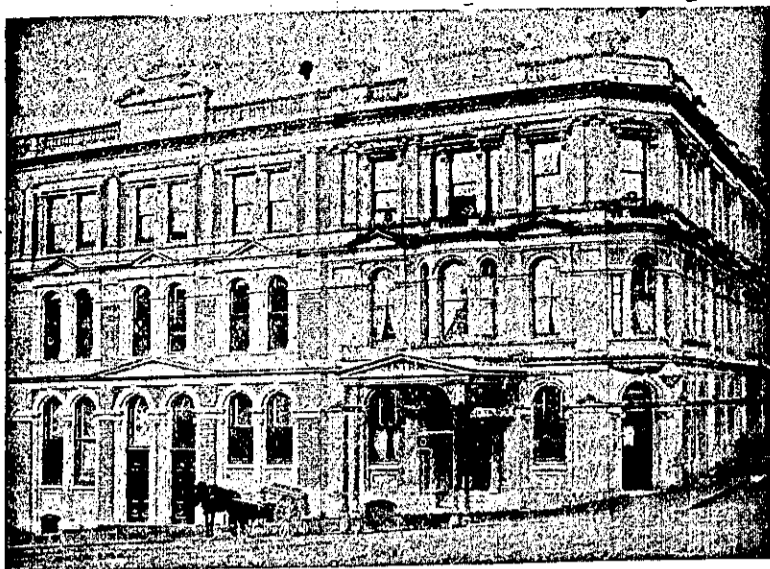
M. W. COOKE Proprietor.

LADY BOWEN HOTEL,
BROWN STREET, THAMES.

**THREE MINUTES' WALK FROM
RAILWAY STATION.**

GOOD ACCOMODATION.
WINES AND SPIRITS.

H. B. C. GILES Proprietor.



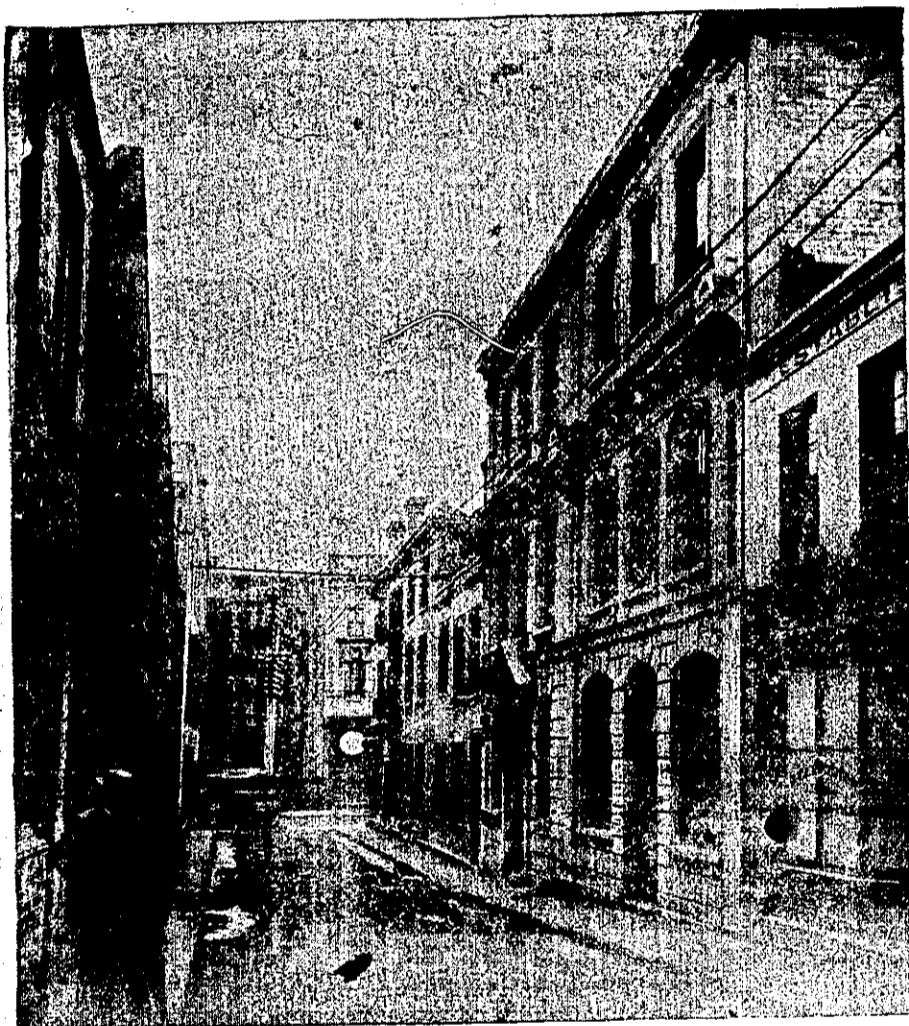
TELEPHONE 490. P.O. BOX 363.

CENTRAL HOTEL

VICTORIA STREET EAST, AUCKLAND.

JAMES ROLLESTON - Proprietor.

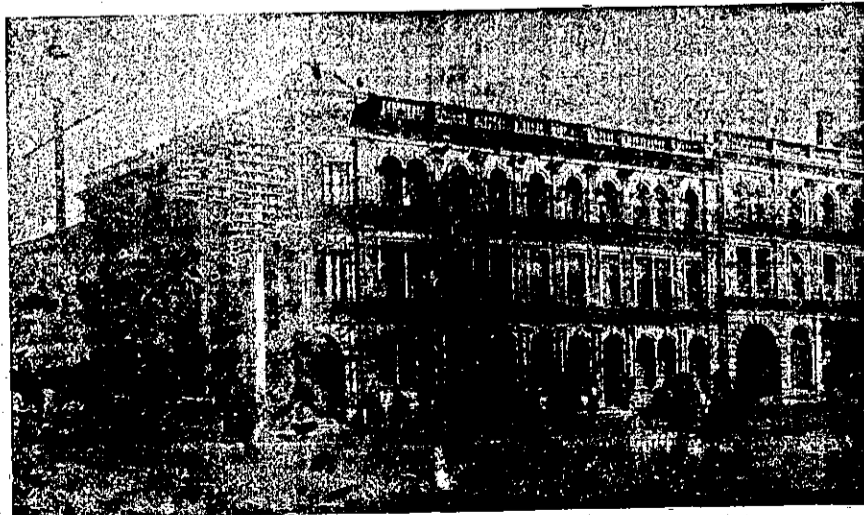
Late of Hikurangi and Coromandel.



Kidd's Commercial Hotel

S. J. ATKINS, Proprietor.

SHORTLAND & HIGH STREETS.



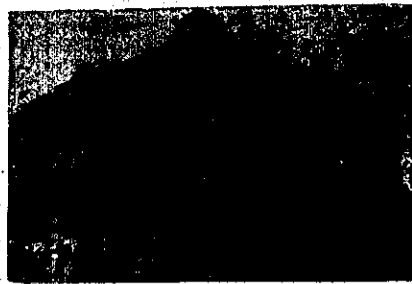
WAI TEMATA HOTEL

CORNER QUEEN & CUSTOM STREETS, AUCKLAND.
Close to the Wharf and Railway Station.

VISITORS WILL FIND EVERY COMFORT & CONVENIENCE.

JOHN ENDEAN, Proprietor.

TELEPHONE NO. 569.



HOBSON HOTEL,
CORNER OF
HOBSON AND VICTORIA STS.
AUCKLAND.

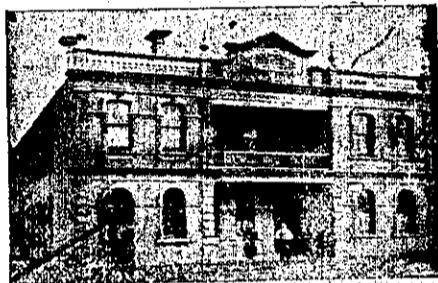
Wines and Spirits of Best Quality.
M. FOLEY Proprietor.



ROYAL GEORGE HOTEL,
NEWMARKET.

CHRIS. LEEK Proprietor.

Mr Chris. Leek begs to notify his numerous friends
that he has taken the above Hotel, which has been
thoroughly renovated, and will afford excellent accom-
modation for boarders and country visitors.
Buses and trams pass the door every three minutes.
Best Brands of Wines and Spirits kept.
Terms Moderate.



WHANGAREI HOTEL,
WHANGAREI.

This fine House, just re-built in brick and furnished
in up-to-date style, now offers unrivalled accommodation
to the travelling public.
Sample Room. Hot and Cold Baths.
Two minutes walk from Saltwater Bathing Place.
Stabling Second to None.
Best Wines, Ales and Spirits Kept in Stock.
SAMUEL McMAHON Proprietor.

ROYAL HOTEL,

RAGLAN,
Favourite Seaside Resort for Tourists:

The Proprietor begs to notify the Public that he has
entered into possession of the above Hotel, which is one
of the most Comfortable Hostleries in the Colony. No
expense has been spared to meet the requirements of
Tourists, Families and Commercial Travellers.

FIRST-CLASS BILLIARD TABLE.
BATHING HOUSES, SAMPLE ROOMS.
STABLING, ETC.
FINEST BRANDS OF LIQUORS ONLY
TABLE A SPECIALTY

Telegrams Promptly Attended to.

J. A. NORRIS (late U.S.S. Co.) Proprietor

EDINBURGH CASTLE HOTEL,

UPPER SYMONDS STREET,
(Opposite Khyber Pass), Auckland

SECCOMBE'S XXXX BEER.

Every Convenience, combined with Civility and
Comfort, for Country Visitors and Boarders.

FIRST-CLASS BILLIARD ROOM.

GOOD STABLING.

P. QUINLAN Proprietor.

EPSOM HOTEL,

EPSOM.

H. J. SYMS Proprietor.

Large and Roomy Hotel, situated opposite
Alexandra Park, on the Epsom Road.

Every Convenience for Visitors and Boarders.

Best Brands of Wines and Spirits kept.
Seccombe's Sparkling Ale on Draught.
Good Stabling.

PAPAKURA HOTEL,

PAPAKURA.

Notice to Cyclists, Footballers, and others.—Young
friend Thos. McEwin has taken over the above Hotel
and will be pleased to see all old faces. Splendid Accom-
modation and Cuisine. Large Rooms for use of Clubs.
THOS. McEWIN Proprietor.