

TARANAKI—Continued.

CLARENDON HOTEL, WAVERLEY.

THE BEST OF ACCOMMODATION FOR TRAVELLERS AND VISITORS.

Six Eeomy Loose Boxes and Six Stalls. First-class Paddocking. The Best Brands of Ales, Wines, and Spirits.

Telephone No. 6. P.O. Box No. 7.

B. T. BENNETT Proprietor.

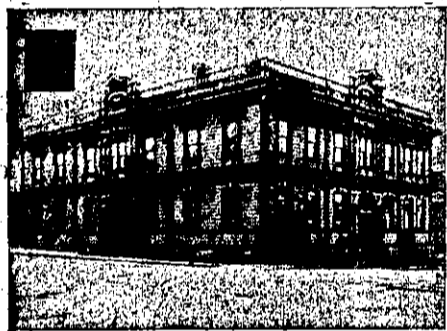
RAILWAY HOTEL, HAWERA

The Mail Train stays here ten minutes. Meals provided to suit all Trains. Accommodation Good and Tariff Reasonable.

CENTRAL HOTEL, EGMONT STREET, PATEA. L. HINTZE, Proprietor (late of Masonic Hotel, Wanganui). L.H. desires to notify the residents of Patea and surrounding districts, that he has taken over the above popular Hotel, where he will be happy to welcome old friends and make new ones.

MASONIC HOTEL, Bedford Street, Patea. Mrs. Keane Proprietress. Mrs. Keane begs to inform her many friends and the residents generally of Patea and district, that she has assumed the proprietorship, and that it will be her aim to uphold the past high reputation of the Hotel.

WANGANUI.



METROPOLITAN HOTEL, WANGANUI

ALF. MITCHELL Proprietor. This commodious and well-furnished family and commercial hotel is almost opposite railway station and town wharves. It has a lovely promenade-roof which commands a splendid view of the town.

THE NEW COMMERCIAL HOTEL, WANGANUI.

Excellent Accommodation for Tourists and Travellers. Best Brands of Wines and Spirits kept in stock. DUNEDIN BEER ALWAYS ON TAP. Half-minute's walk from River Steamers. Telephone 289.

A. SUMMERS Proprietor

CHAVANNES' VICTORIA HOTEL, WANGANUI.

THE TOURIST'S HOTEL. Choicest Wines, Spirits and Cigars. Night Porter kept. Cook's Coupons Accepted. Write or wire for rooms to J. S. PALMER, Proprietor.

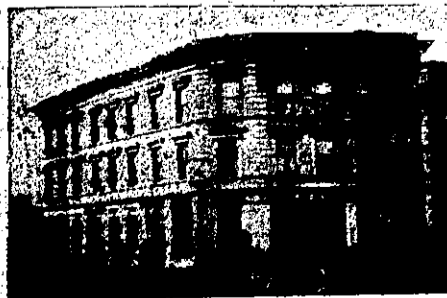
COMMERCIAL HOTEL, WAVERLEY.

THE COMMERCIAL HOUSE OF WAVERLEY.

EXCELLENT ACCOMMODATION, CUISINE AND LIQUORS.

CHAS. HARRISON Proprietor. (Late of New Plymouth and Levin.)

TIMARU.



STOP AT SHIP HOTEL, TIMARU. One minute from Railway Station and Wharf. Excellent Cuisine and Dining Room appointments. Wines, Spirits, and Ales defy competition. Hot, Cold, and Crescent Shower Baths. Tariff Strictly Moderate.

CLUB HOTEL, TIMARU.

This Hotel has been renovated throughout, and now offers excellent Accommodation to the Travelling Public. Local and XXXX Beer always on Tap. Walker's Special Whisky on Draught. Sample Rooms in connection with premises.

JOHN DOBE Proprietor

TIMARU HOTEL

WILLIAM TOBIN Has Leased the above Hotel, and will be glad to Receive Friends and Visitors to Timaru. First-class Accommodation. Well-appointed Billiard Rooms, Hot and Cold Water Baths.

The Best Brands of Spirits and Ale in Stock. Terms Reasonable.

WM. TOBIN Proprietor

DUNEDIN.

BOWLING GREEN HOTEL, CORNER OF FREDERICK AND CUMBERLAND STREETS, DUNEDIN.

W. D. WYATT, late of Wellington, begs to inform his Friends and Country Visitors that he has taken the above well-known Hotel, which has been thoroughly Renovated and Re-furnished, and is now in a position to offer his Patrons First class Accommodation. TERMS MODERATE. NOTED HOUSE FOR THE BEST WINES & SPIRITS

THE IMPERIAL, FAMILY AND COMMERCIAL HOTEL, PRINCES-STREET, SOUTH, DUNEDIN.

J. FOGARTY (late of Universal Hotel, Dunedin, and Oxford Hotel, Christchurch), MANAGERESS. J. BRENNAN Proprietor.



SEE! SEE! SEE! AT THE CORNER OF GREAT KING AND ST. ANDREW STREETS, DUNEDIN,

BRANSON'S HOTEL.

The outlay is enormous, and is an important addition to the city.

VERDICT—

BRANSON'S HOTEL May safely be commended to Visitors as an Hotel where they will receive everything that will contribute to their safety, comfort and enjoyment.

CHAS. B. M. BRANSON Proprietor.

GLADSTONE HOTEL, MACLAGGAN STREET, DUNEDIN.

JOHN COLLINS Proprietor. (Late of Al Hotel, Pelichet Bay.) The most centrally situated Hotel in the City. First-class accommodation for Tourists, Travellers and Boarders. Suites of rooms for families. Charges moderate. A Special Feature: 1/- Lunch from 12 to 2 o'clock. Hot, cold, and shower baths. The very best of Wines, Ales, and Spirits supplied.

GRIDIRON HOTEL, PRINCES-STREET, SOUTH, DUNEDIN.

This popular and centrally-situated Hotel has been renovated from floor to ceiling, and refurnished throughout with the newest and most up-to-date furniture. Suites of rooms for families. Charges strictly moderate.

Hot, Cold, and Shower Baths. The very best of Wines, Ales, and Spirits supplied. A Night Porter in attendance. Accommodation for over One Hundred Guests. L. CLANCY Proprietor

NELSON.

COACH AND HORSES HOTEL.

G. M. MATHIESON, formerly of the Masonic Hotel, Havelock, and White Hart Hotel, Richmond, has taken over the above centrally situated and commodious premises, where it will be his pleasure to make every provision for the wants and comforts of all patrons. The interior of the house has been thoroughly renovated, and the Coach and Horses will be found one of the most comfortable hosteries in Nelson Province. Terms moderate. The best of liquors only kept. Good stabling.

MASONIC HOTEL, NELSON.

CHANGE OF OWNERSHIP.

This long-established Hotel, which has always been the Headquarters in Nelson for Tourist and Commercial Travellers, has recently been purchased by Mr H. Bagent. The Hotel has been thoroughly Renovated and all the Rooms are being refitted in modern style. No effort will be spared to make all visitors thoroughly comfortable.

BLLENHEIM.

MASONIC HOTEL, BLLENHEIM

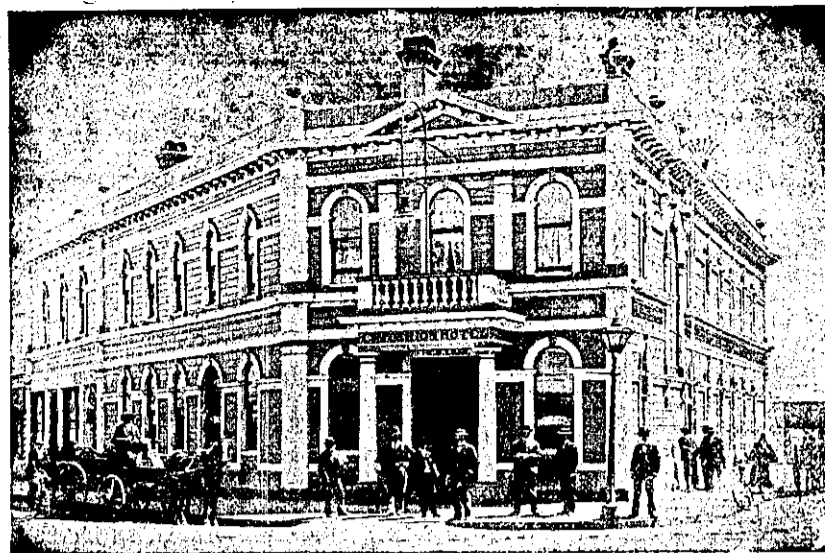
Is Central, Popular, and Convenient; does a Commercial Business; has Splendid Appointments; Hot and Cold Baths; one of Alcock's Match Tables; and is the House selected by the N.Z.C.T. Club. MODERATE TARIFF. J. PENNEY Proprietor.

REEFTON

ROXBOROUGH'S RAILWAY HOTEL, BROADWAY REEFTON.

The Accommodation throughout is all that can be desired. Excellent Cuisine and Dining Room appointments. Wines, Spirits, and Ales defy competition. Hot, Cold, and Crescent Shower Baths. Tariff Strictly Moderate.

BLLENHEIM.



UNDER VICE-REGAL PATRONAGE.

UNDER VICE-REGAL PATRONAGE.

CRITERION HOTEL, BLLENHEIM.

G. B. LUSK Proprietor.

THE Leading Hotel on the West Coast. Every convenience of a First-class Hotel for Families, Visitors, Tourists, and Commercial Gentlemen. Hot, Cold, and Shower Baths. Commodious Sample Rooms. First-class Billiard Table. The Choicest Wines, Spirits and Ales. Letters and Telegrams receive Prompt Attention. Night Porter in Attendance.

GLADSTONE HOTEL, REEFTON.

This Hotel, having been thoroughly renovated and refurnished throughout, now offers Superior Accommodation at a moderate tariff. Best Brands of Wines, Spirits, Ales, etc.

TARIFF: 4/6 PER DIEM.

R. DUMPHY Proprietor

HOKITIKA.

OCCIDENTAL HOTEL, WEARF STREET, HOKITIKA.

Centrally and conveniently situated, offering the best accommodation at a moderate tariff. Wines, Spirits, Ales, etc., of the best quality procurable. Cuisine excellent, under the personal supervision of Mrs Woolhouse.

TARIFF—5/- per diem, £1 1/- per week.

Mrs N. M. WOOLHOUSE, PROPRIETRESS.

PICTON

FEDERAL HOTEL, PICTON, N. Z.

T. J. STOREY Proprietor [Late Representative Booth, Macdonald & Co.]

THE Building is entirely New and of Brick, with all Modern Appliances and Conveniences. The Sanitary Arrangements and Ventilation have been specially studied, and the house is First-class in every detail.

VISITORS to Picton will find that no effort will be spared to afford them comfort, whilst the Tariff is Most Moderate.

LETTERS AND TELEGRAMS RECEIVE PROMPT ATTENTION.

First-class Billiard Table. Hot and Cold Baths. Porter Meets all Trains and Steamers.

POST OFFICE HOTEL, WELLINGTON-STREET, PICTON

(Within a Minute's Walk of Post Office Wharf and Railway Station.)

C. DARVILL (late of Foxton) Proprietress

FIRST-CLASS ACCOMMODATION FOR TRAVELLERS & FAMILIES.



TERMINUS HOTEL, PICTON.

HARRY BRADY, PROPRIETOR.

Close to Railway Station, Post Office and Wharf. Letters and Telegrams promptly attended to.

WESTPORT



EMPIRE HOTEL, WESTPORT

H. McMASTER Proprietor [Late Chief Steward White Star Line and N.Z. Shipping Company].

Recently Refurnished and Renovated throughout. This Hotel will be found to offer every Modern convenience to Commercial Travellers and Visitors. Night Porter kept. Cuisine a Speciality. Two Alcock's Billiard Tables. Six Sample Rooms, Good Stabling.



GRAND HOTEL, PALMERSTON STREET, WESTPORT,

H. NAHR Proprietor



THE GISBORNE HOTEL,

Corner of CHILDER'S ROAD and LOWE STREET, GISBORNE.

THE above Hotel re-built on most modern lines, is centrally and conveniently situated, being within two minutes walk of the Post Office, Railway Station and Wharf. A balcony of 100 feet by 8 feet surrounds the building, affording an excellent view of the Harbor and Shipping, and offering easy egress in the event of fire. Hot, Cold and Shower Baths. From its quiet situation is specially adapted for Tourists and Families.

J. H. MARTIN Proprietor.