

WELLINGTON—Continued.

WHITE HART HOTEL, MARTON

The Leading Family and Commercial Hotel in the District. First-class Accommodation. Nothing but the Best Brands of Wines and Spirits kept. Hotel lighted with Electric Light throughout. Spacious and Well lighted Sample Rooms.

CENTRAL HOTEL, OTAKI.

Mr Thomas Messiter begs to inform the travelling public and friends that he has lately taken over the above, which has been renovated and furnished throughout, and offers accommodation second to none in Otaki. All liquors of the best brands obtainable. Speight's XXX Ales on Draught.

DEVINE'S EMPIRE HOTEL, MAIN STREET, PALMERSTON NORTH.

Patrons can rely on being supplied with all leading Brands of Whiskies, Wines, and Brandy. Special feature: First-class luncheon from 12 o'clock to 2 p.m. for One ...

COMMERCIAL HOTEL, LAMBTON QUAY, WELLINGTON.

Ask for what you want and you will get it. If not in Stock, you will be told so.

CLUB HOTEL, MARTON.

MR J. W. PROOTER (late of Turakina and Wanganui), having secured a long Lease of the above and effected extensive alterations and improvements, is now prepared to cater for the public in up-to-date style.

EMPIRE HOTEL, FIELDING.

MR J. WAREHAM, late of the Club Hotel, Stratford, has taken over the above Hotel, and has had the same thoroughly renovated and re-furnished throughout.

POST OFFICE HOTEL, FOXTON.

This Hotel, having just been Rebuilt and Refurnished throughout, now affords the Best of Accommodation for Travellers, etc.

W. F. GRAY, PROPRIETOR.

W. F. GRAY, PROPRIETOR.

W. F. GRAY, PROPRIETOR.

W. F. GRAY, PROPRIETOR.

The Proprietor wishes to inform the travelling public that the above well and favourably-known Hotel has recently been enlarged and renovated, making it now one of the Best Hotels in the North Island, where patrons may rely on receiving every attention and the comforts of a home.

CENTRAL HOTEL, WELLINGTON

(Two Minutes walk from Queen's Wharf). A. M. GOW (late of Dunedin).....Proprietor

CHRISTCHURCH.

CRITERION HOTEL

NEXT THEATRE ROYAL, CHRISTCHURCH.

Best Beer, Wines, and Spirits Only Kept. GOOD ACCOMMODATION.

Special Attention given to Theatre-goers during the intervals. W. BURNIP - PROPRIETOR.

RAILWAY HOTEL

(Close to the Station). MANCHESTER-STREET, CHRISTCHURCH.

Tariff, 4/6 per diem, or 25/ per week. Excellent Stabling, Loose Boxes, etc. W. J. BAE.....Proprietor.

WARNER'S NEW HOTEL, CHRISTCHURCH, N.Z.

This Palatial Hotel is now Complete and Open for the Reception of Visitors.

120-CAPACIOUS ROOMS-120 SUPERBLY FURNISHED THROUGHOUT

The Hotel is now Complete with every Modern Luxury and Comfort. Electric Light throughout. PERCY HERMAN.....Proprietor

THE GLADSTONE HOTEL

(Off Papanui Road), CHRISTCHURCH. AN UP-TO-DATE HOUSE. Excellent Accommodation. Liquors of Special Quality and in Great Variety. H. PIPER..... PROPRIETOR

HAWKE'S BAY PROVINCE.

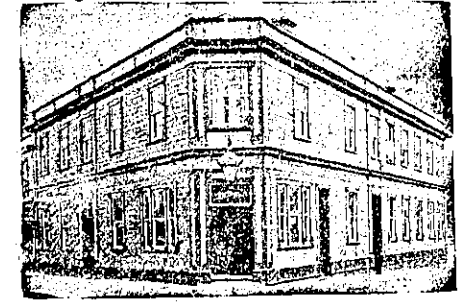
PROVINCIAL HOTEL, CLIVE SQUARE, NAPIER.

J. W. McDUFF.....Proprietor. The above Hotel has been entirely rebuilt in brick, and furnished and fitted up in the latest and most up-to-date manner.



ALBION HOTEL, NAPIER.

THE SPORTING HOUSE OF NAPIER. Now under entirely new Management. EXCELLENT ACCOMMODATION. LIBERAL TABLES. BEST LIQUORS. G. H. MUELEISEN ... Proprietor



CALEDONIAN HOTEL, NAPIER.

HASTINGS-STREET, NAPIER. A. C. BARNES.....Proprietor

COMMERCIAL HOTEL, WAIPAWA.

Private Suites of Apartments and every Convenience for the Accommodation of the public. WINES, SPIRITS & BEER of the Best Quality Only. A FIRST-CLASS BILLIARD TABLE. Good Stabling and Paddock Accommodation. W. FELLOW.....Proprietor

EMPIRE HOTEL, WAIPAWA

G. OAKENFULL.....Proprietor. This Hotel is acknowledged to be the best between Napier and Wellington. Families and the travelling public can rely upon the best accommodation in the province.

PACIFIC HOTEL, HASTINGS.

A. ELLINGHAM (Late of Stortford Lodge Hotel), HAS taken over this well-known Hostelry, that has been presided over by Mr H. O. Caulton for the last twenty years.

Splendid Loose-box Accommodation for Visiting Trainers. Telephone Communication between Napier and Hastings. All Telegrams carefully attended to. ALF. ELLINGHAM.....Proprietor.



MASONIC HOTEL, DANNEVIRKE, H.B.

THE LEADING FAMILY AND COMMERCIAL HOTEL IN THE DISTRICT. First-class Accommodation. Nothing but the Best Brands of Wines and Spirits kept.

NAVIK HOTEL, WAIPUKURAU.

Tourists, Commercial and Families will find this Hotel replete and most up-to-date. Good trout-fishing in Waipukurau and Tukituki Rivers.

CRITERION HOTEL, NAPIER.

First-Class Accommodation for Tourists, Families and Commercial Men. S. CHARLTON, PROPRIETOR.

E. J. WARREN

(Formerly of the Havelock and Tara-dale Hotels). HAS taken over the Albert Hotel, Hastings, which is now replete with every comfort and convenience.

WOODVILLE REFRESHMENT ROOMS

E. W. RUDDICK ... PROPRIETOR. Mail Trains wait twenty minutes for Lunch. The Railway passengers, going either North or South, should be acquainted with the fact that at the Woodville Refreshment Rooms they can have a good Hot Luncheon.

POST OFFICE HOTEL

(Opposite Post Office, Main Street, Pahiatua.) T. HENLEY (late of Working Men's Club, Palmerston North), has taken over the above well-known Hostelry, which will now be found up-to-date in all its appointments.

CLUB HOTEL, WOODVILLE.

First-class Accommodation for Families, Travellers, and Tourists. Well-lighted Sample Room. P. M. POOL ... PROPRIETOR. Telephone No. 1. P.O. Box 58.

TARANAKI PROVINCE

COMMERCIAL HOTEL, STRATFORD.

BEST OF ACCOMMODATION AT A VERY MODERATE RATE. HOT AND COLD BATHS. EXCELLENT TABLE KEPT. ALL LIQUORS AT SPEIGHT'S XXX ALES ON DRAUGHT.

MASONIC HOTEL, WAITARA.

ROBERT KIBBY.....Proprietor. Announces that he has assumed the Proprietorship of this popular house. The Best Accommodation and Good Cuisine. WINES, BEERS AND SPIRITS OF THE BEST QUALITY.

EMPIRE HOTEL, HAWERA

(Corner of High and Princes Streets), MRS A. MAGUIRE.....Proprietress. Good Stabling, Billiards, Bath Room. Wines, Beers and Spirits Unsurpassed. Mrs MAGUIRE wishes to draw the attention of the Auckland Public to the ONE SHILLING LUNCHEON provided. Tariff: 4/6 per day; only one price.



RED HOUSE HOTEL, DEVON-STREET, NEW PLYMOUTH.

EDWIN WHITTLE ... Proprietor. Rebuilt and refurnished, this well-known hostelry now contains every comfort for guests. The Liquors stocked are the choicest to be bought in the Market. PAUL'S XXXX ALES ON DRAUGHT.

THE TROADERO, PRIVATE HOTEL AND RESTAURANT.

CORNER OF EAST ROAD AND JULIET-STREET, STRATFORD (One Minute's Walk from the Railway Station). Specially adapted for the Convenience and Comfort of the Travelling Public.

TARANAKI HOTEL, BROUGHAM-STREET NEW PLYMOUTH.

E. F. BUCKTHOUGHT ... Proprietor. All Wines and Spirits stocked of the best quality. Twenty-year-old Guaranteed Liqueur Whiskey a Specialty. PAUL'S XXXX ALES.

THE METROPOLITAN GRAND CENTRAL COFFEE PALACE AND RESTAURANT,

CORNER OF DEVON AND EGMONT STREETS, NEW PLYMOUTH. Within one minute's walk of Railway Station, Post Office and Banks. Is specially adapted for the Convenience and Comfort of the Commercial and Social Travelling Public, and in every way equal to a First class Hotel.