

NEW ZEALAND HOTEL DIRECTORY.—CONTINUED

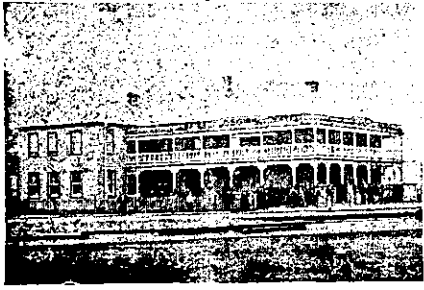
PATRONISED BY HORSEMEN, CYCLISTS, GOLFERS, SPORTSMEN, AND THE THEATRICAL PROFESSION.

AUCKLAND PROVINCE.—Continued.

STAR HOTEL, Karangahape Rd. NEWTON, Opposite Ponsonby Reservoir.

FINEST BRANDS OF BEERS, WINES AND SPIRITS.

JAMES McLEOD - - Proprietor



WAIPA HOTEL, NGARUAWAHIA (Close to the Railway Station).

Best Brands of Wines and Spirits only kept. FIRST-CLASS ACCOMMODATION. Hot and Cold Baths. Good Billiard Table. Coach leaves for Waingaro Hot Springs twice a week. P. GUTHRIE, - PROPRIETOR.



MASONIC HOTEL TAURANGA.

THOMAS FLOYD, Proprietor. Commercial Gentlemen and Tourists will find here every requisite. Coaches call here daily for all the surrounding townships. FIRST-CLASS SAMPLE ROOM. SPEIGHT'S BEER ONLY ON DRAUGHT.



GRAND HOTEL, TE AROHA.

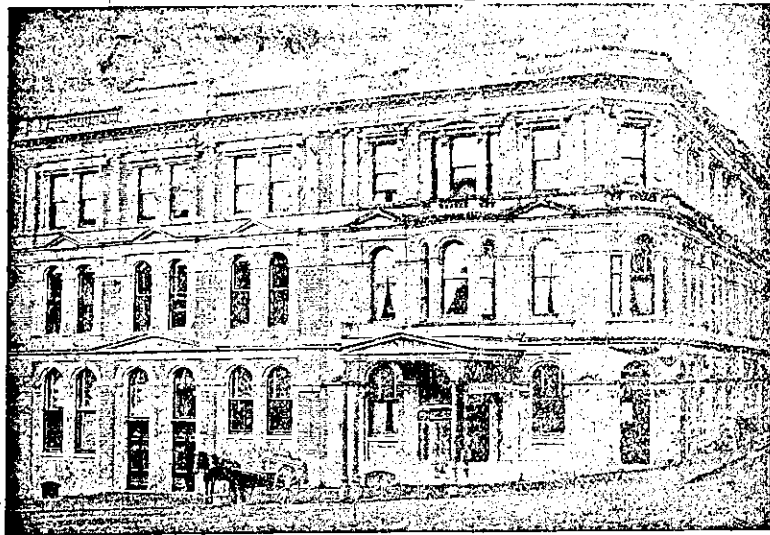
Directly opposite the Sanatorium and commanding the most Charming Prospect of the Domain. This New and Commodious Hotel is replete with every convenience requisite to the comfort of the travelling public. First-class Cuisine, Hot, Cold, and Shower Baths. Coaches attend all trains. Letters and telegrams promptly attended to. J. W. SHAW - - - Proprietor Late of Commercial Hotel, Paeroa, and British Hotel, Auckland.

PRINCE ARTHUR HOTEL

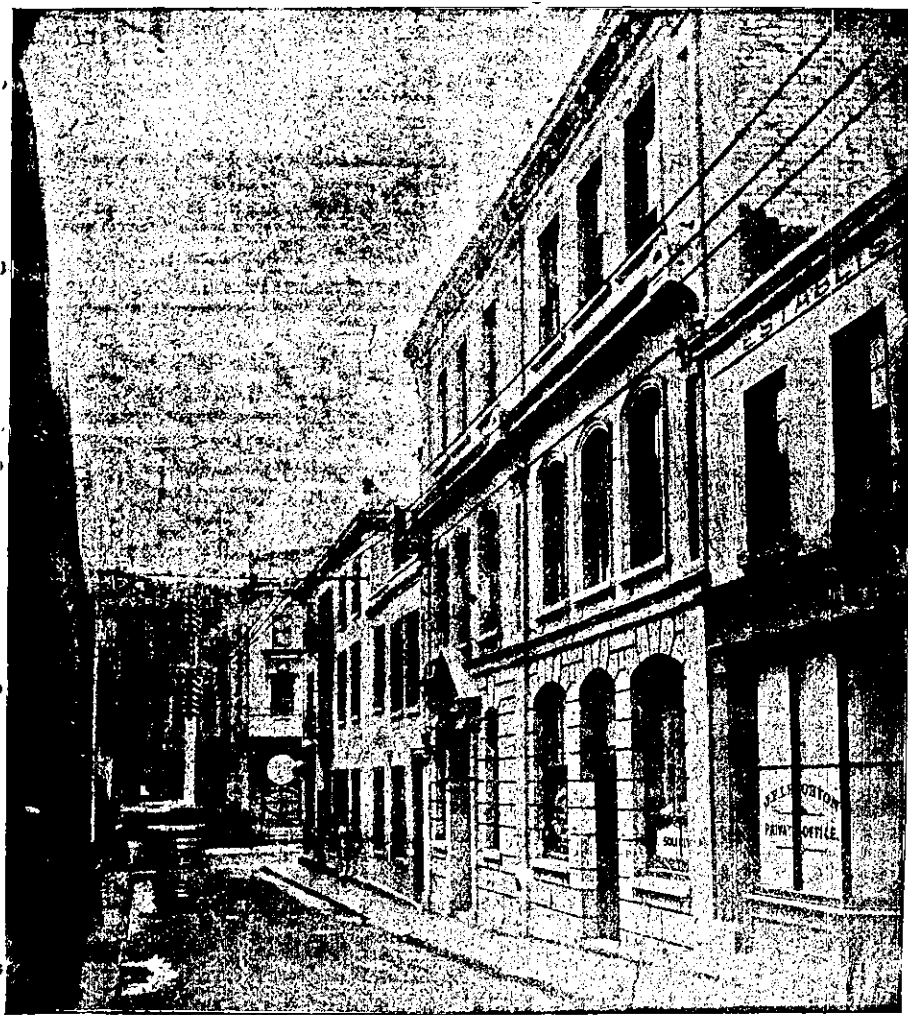
(LATE GRAM'S) AUCKLAND, CENTRALLY SITUATED. TARIFF: FROM 5/- PER DAY. HYDRAULIC LIFT. SELECT SUITES OF ROOMS FOR VISITOR AND TOURISTS. M. J. W. COOKE..... PROPRIETOR

LADY BOWEN HOTEL, BROWN STREET, THAMES.

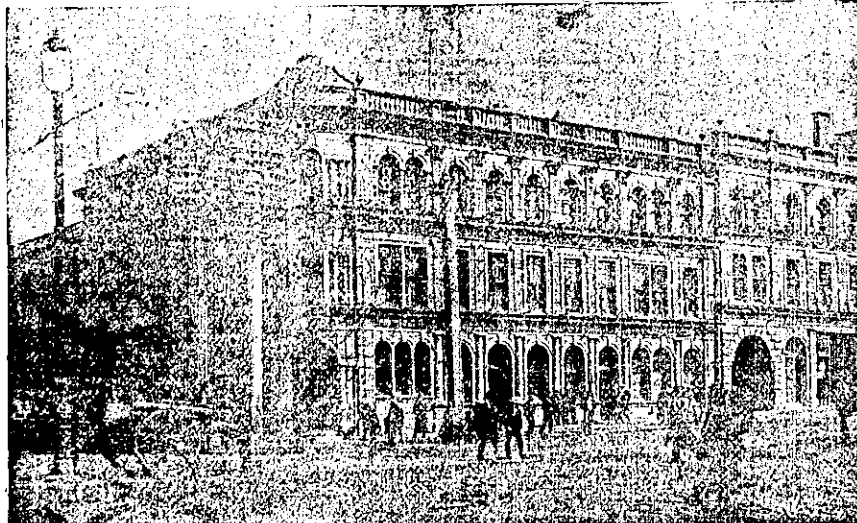
H. B. C. GILES..... PROPRIETOR THREE MINUTES' WALK FROM RAILWAY STATION. GOOD ACCOMMODATION, WINES AND SPIRITS.



TELEPHONE 490 P.O. BOX 865. CENTRAL HOTEL Victoria Street East, Auckland. JAMES ROLLESTON - - Proprietor (LATE OF HIKURANGI AND COROMANDEL.)

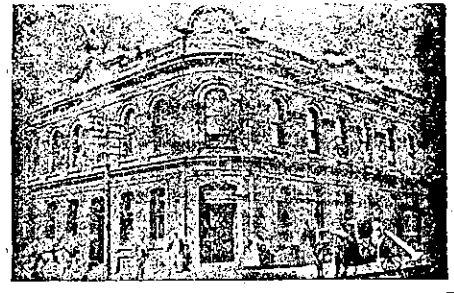


KIDD'S COMMERCIAL HOTEL, SHORTLAND AND HIGH STREETS. S. J. ATKINS - - Proprietor.



WAITEMATA HOTEL, CORNER QUEEN AND CUSTOMS STREET.

Close to the Wharf and Railway Station. Visitors will find every Comfort and Convenience. JOHN ENDEAN PROPRIETOR TELEPHONE NO. 589.



HOBSON HOTEL, AUCKLAND Corner of Hobson and Victoria Sts. Wines and Spirits of Best Quality. M. FOLEY - - PROPRIETOR.



ROYAL GEORGE HOTEL NEWMARKET. PROPRIETOR.....CHRIS. LEEK Mr Chris. Lee begs to notify his numerous friends that he has taken the above Hotel, which is being thoroughly renovated, and will afford excellent accommodation for boarders and country visitors. Buses and trams pass the door every 3 min. Best Brands of Wines and Spirits kept. Terms moderate.



WHANGAREI HOTEL, WHANGAREI SAMUEL McMAHON..... Proprietor. This fine House, just re-built in brick and furnished in up-to-date style, now offers unrivalled accommodation to the travelling public. Sample Room. Hot and Cold Baths. Two minutes Walk from Saltwater Bathing Place. Stabling Second to None. Best Wines, Ales and Spirits Kept in Stock.

ROYAL HOTEL, RAGLAN. Favourite Seaside Resort for Tourists.

The Proprietor begs to notify the Public that he has entered into possession of the above Hotel, which is one of the most comfortable Hostels in the Colony. No expense has been spared to meet the requirements of Tourists, Families and Commercial Travellers. FIRST-CLASS BILLIARD TABLE. BATHING HOUSES, SAMPLE ROOMS STABLING, ETC. FINEST BRANDS OF LIQUORS ONLY. TABLE A SPECIALTY. Telegrams Promptly Attended to. J. A. NORRIS (late U.S.S. Co.)..... Proprietor

EDINBURGH CASTLE HOTEL

Upper Symonds Street (Opposite Kyber Pass), Auckland. SECCOMBE'S XXXX BEER. Every Convenience, combined with Civility and Comfort, for Country Visitors and Boarders. FIRST-CLASS BILLIARD ROOM. GOOD STABLING. P. QUINLAN - PROPRIETOR.

EPSOM HOTEL, EPSOM

H. J. SYMS ... Proprietor. Large and Roomy Hotel, situated opposite Alexandra Park, on the Epsom Road. Every Convenience for Visitors and Boarders. Best Brands of Wines and Spirits kept. Seccombe's Sparkling Ale on draught. Good Stabling.

PAPAKURA HOTEL, PAPAKURA

Notice to Cyclists, Footballers, and others.—Your old friend Thos. McEwin has taken the above Hotel, and will be pleased to see all old faces. Splendid Accommodation and Cuisine. Large Rooms for use of Clubs. THOS. McEWIN - PROPRIETOR