

WELLINGTON—Continued.

WHITE HART HOTEL, MARTON

The Leading Family and Commercial Hotel in the District. First-class Accommodation Nothing but the Best Brands of Wines and Spirits kept. Hotel lighted with Electric Light throughout. Spacious and Well lighted Sample Rooms.

CENTRAL HOTEL, OTAKI.

Mr Thomas Messiter begs to inform the travelling public and friends that he has lately taken over the above, which has been renovated and furnished throughout, and offers accommodation second to none in Otaki. All liquors of the best brands obtainable. Speight's XXX Ales on Draught.

DEVINE'S EMPIRE HOTEL,

Patrons can rely on being supplied with all leading Brands of Whiskies, Wines and Brandies. Special feature: First-class luncheon from 12 o'clock to 2 p.m. for One shilling.

COMMERCIAL HOTEL

LAMBTON QUAY, WELLINGTON, (Leading from Main Wharf top of Grey Str) Ask for what you want and you will get it. If not in Stock, you will be told so

CLUB HOTEL,

MR J. W. PROCTER (late of Turakina and Wanganui), having secured a long Lease of the above and effected extensive alterations and improvements, is now prepared to cater for the public in up-to-date style.

EMPIRE HOTEL,

MR J. WAREHAM, late of the Club Hotel, Stratford, has taken over the above Hotel, and has had the same thoroughly renovated and re-furnished throughout.

WESTERN HOTEL,

MR PAGNI, who is well-known among Footballers, Athletes and others, begs to inform all his friends and visitors that he has taken possession of the above popular house, which will, in future, be under his entire management.

OCCIDENTAL HOTEL, MASTERTON

The Sporting House of Masterton. Only CASE Spirits Sold. Best Dunedin Ales on Tap.

POST OFFICE HOTEL,

This Hotel, having just been Rebuilt and Refurnished throughout, now affords the Best of Accommodation for Travellers, etc.

LEVIN HOTEL

(To which is attached the Horowhenua County Club and the Levin Aerated Water Factory.) The Proprietor wishes to inform the travelling public that the above well and favourably-known Hotel has recently been enlarged and renovated, making it now one of the Best Hotels in the North Island.

CENTRAL HOTEL, WELLINGTON

(Two Minutes walk from Queen's Wharf). A. M. GOW (late of Dunedin).....Proprietor ONLY BEST BRANDS OF LIQUOR KEPT MODERATE CHARGES.

TEMPERANCE HOTEL

Mrs F. D. PELLING desires to intimate that she has taken over the above, which has just been renovated throughout. Permanent and casual boarders will find every comfort of a home.

CRISTCHURCH.

CRITERION HOTEL

NEXT THEATRE ROYAL, CHRISTCHURCH. Best Beer, Wines, and Spirits Only Kept. GOOD ACCOMMODATION.

OXFORD HOTEL, MARKET SQUARE

This Hotel is beautifully and conveniently situated, facing the Rotunda and River, and offers all the comforts of a home.

RAILWAY HOTEL

(Close to the Station). MANCHESTER-STREET, CHRISTCHURCH. Tariff, 4/6 per diem, or 25/ per week. Excellent Stabling, Loose Boxes, etc.

EDWIN FOX'S HOTEL,

CASHEL STREET, CHRISTCHURCH; Having taken possession of the above Hotel, and having had it renovated throughout, it is my intention to cater for the comfort of the General Public.

THE GLADSTONE HOTEL

(Off Papanui Road), CHRISTCHURCH. AN UP-TO-DATE HOUSE. Excellent Accommodation. Liquors of Special Quality and in Great Variety.

HAWKE'S BAY PROVINCE.

PROVINCIAL HOTEL, CLIVE SQUARE,

NAPIER. J. W. McDUFF.....Proprietor The above Hotel has been entirely rebuilt in brick, and furnished and fitted up in the latest and most up-to-date manner.

ALBION HOTEL

THE SPORTING HOUSE OF NAPIER Now under entirely new Management. EXCELLENT ACCOMMODATION. LIBERAL TABLES. BEST LIQUORS.

COMMERCIAL HOTEL, WAIPAWA

Private Suites of Apartments and every Convenience for the Accommodation of the public. WINES, SPIRITS & BEER of the Best Quality Only.

CALEDONIAN HOTEL,

HASTINGS-STREET, NAPIER. A. C. BARNES.....Proprietor

EMPIRE HOTEL, WAIPAWA

G. OAKENFULL.....Proprietor. This Hotel is acknowledged to be the best between Napier and Wellington. Families and the travelling public can rely upon the best accommodation in the province.

PACIFIC HOTEL,

HASTINGS. A. ELLINGHAM (Late of Stortford Lodge Hotel), HAS taken over this well-known Hostelry, that has been presided over by Mr H. O. Caulton for the last twenty years.

MASONIC HOTEL, DANNEVERKE, H.B.

THE LEADING FAMILY AND COMMERCIAL HOTEL IN THE DISTRICT. First-class Accommodation. Nothing but the Best Brands of Wines and Spirits kept.

NAVIKSTOCK HOTEL, WAIPUKURAU.

Tourists, Commercial and Families will find this Hotel replete and most up-to-date. Good trout-fishing in Waipukurau and Tukituki Rivers.

CRITERION HOTEL, NAPIER.

First-Class Accommodation for Tourists, Families and Commercial Men. S. CHARLTON, PROPRIETOR.

E. J. WARREN

(Formerly of the Havelock and Paradise Hotels); HAS taken over the Albert Hotel, Hastings, which is now replete with every comfort and convenience.

WOODVILLE REFRESHMENT ROOMS

E. W. RUDDICK ... PROPRIETOR. Mail Trains wait twenty minutes for Lunch. The Railway passengers, going either North or South, should be acquainted with the fact that at the Woodville Refreshment Rooms they can have a good Hot Luncheon.

POST OFFICE HOTEL.

(Opposite Post Office, Main Street, Pahiatua.) T. HENLEY (late of Working Men's Club, Palmerston North), has taken over the above well-known Hostelry, which will now be found up-to-date in all its appointments.

CLUB HOTEL,

WOODVILLE. First-class Accommodation for Families, Travellers, and Tourists. Well-lighted Sample Room. P. M. POOL ... PROPRIETOR.

TARANAKI PROVINCE

COMMERCIAL HOTEL, STRATFORD.

BEST OF ACCOMMODATION AT A VERY MODERATE RATE. HOT AND COLD BATHS. EXCELLENT TABLE KEPT.

MASONIC HOTEL, WAITARA.

ROBERT KIBBY.....Proprietor Announces that he has assumed the Proprietorship of this popular house. The Best Accommodation and Good Cuisine.

EMPIRE HOTEL, HAWAIA

(Corner of High and Princes Streets), MRS A. MAGUIRE.....Proprietress. Good Stabling. Billiards, Bath Room. Wines, Beers and Spirits Unsurpassed.

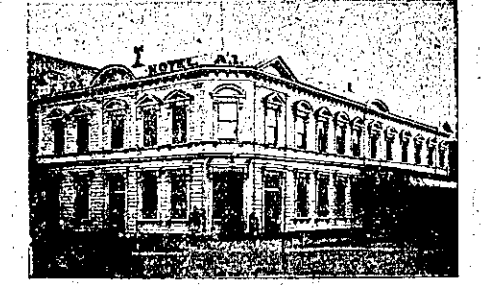
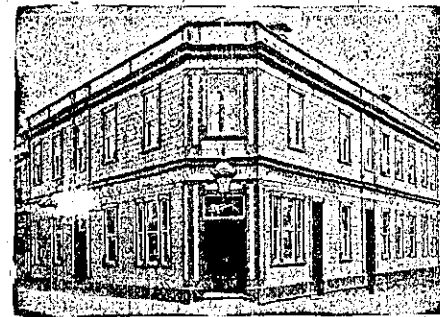
MASONIC HOTEL, DANNEVERKE, H.B.

THE LEADING FAMILY AND COMMERCIAL HOTEL IN THE DISTRICT. First-class Accommodation. Nothing but the Best Brands of Wines and Spirits kept.

RED HOUSE HOTEL

DEVON-STREET, NEW PLYMOUTH. EDWIN WHITTLE ... Proprietor Rebuilt and refurnished, this well-known hostelry now contains every comfort for guests.

PAUL'S XXXX ALES ON DRAUGHT.



THE METROPOLITAN GRAND CENTRAL COFFEE PALACE AND RESTAURANT,

CORNER OF DEVON AND REGMONT STREETS, NEW PLYMOUTH. Within one minute's walk of Railway Station, Post Office and B. Is specially adapted for the Convenience and Comfort of the Commercial and Social Travelling Public.