

WELLINGTON—Continued.

WHITE HART HOTEL, MARTON

The Leading Family and Commercial Hotel in the District. First-class Accommodation. Nothing but the Best Brands of Wines and Spirits kept. Hotel lighted with Electric Light throughout. Spacious and Well lighted Sample Rooms.

CENTRAL HOTEL, OTAKI.

Mr Thomas Messiter begs to inform the travelling public and friends that he has lately taken over the above, which has been renovated and furnished throughout, and offers accommodation second to none in Otaki. All liquors of the best brands obtainable. Speight's XXX Ales on Draught.

DEVINE'S EMPIRE HOTEL, MAIN STREET, PALMERSTON NORTH.

Patrons can rely on being supplied with all leading Brands of Whiskies, Wines and Brandies. Special feature: First-class luncheon from 12 o'clock to 2 p.m. for One.

COMMERCIAL HOTEL, LAMBTON QUAY, WELLINGTON.

Ask for what you want and you will get it. If not in Stock, you will be told so.

CLUB HOTEL, MARTON.

MR J. W. PROCTER (late of Turakina and Wanganni), having secured a long lease of the above and effected extensive alterations and improvements, is now prepared to cater for the public in up-to-date style.

EMPIRE HOTEL, FIELDRIDGE.

MR J. WAREHAM, late of the Club Hotel, Stratford, has taken over the above Hotel, and has had the same thoroughly renovated and re-furnished throughout.

WESTERN HOTEL, 11, WILLIS-STREET, WELLINGTON.

MR PAGNI, who is well-known among Footballers, Athletes and others, begs to inform all his friends and visitors that he has taken possession of the above popular house, which will, in future, be under his entire management.

OCCIDENTAL HOTEL, MASTERTON

The Sporting House of Masterton. Only CASH Spirits Sold. Best Dunedin Ales on Tap.

POST OFFICE HOTEL, FOXTON.

This Hotel, having just been Rebuilt and Refurnished throughout, now affords the Best of Accommodation for Travellers, etc.

LEVIN HOTEL

(To which is attached the Horowhenua County Club and the Levin Brated Water Factory.)

ALBION HOTEL, NAPIER.

THE SPORTING HOUSE OF NAPIER. Now under entirely new Management. EXCELLENT ACCOMMODATION, LIBERAL TABLES, BEST LIQUORS.

CENTRAL HOTEL, WELLINGTON

(Two Minutes walk from Queen's Wharf). A. M. GOW (late of Dunedin)..... Proprietor. ONLY BEST BRANDS OF LIQUOR KEPT. MODERATE CHARGES.

TEMPERANCE HOTEL, EKETAHUNA.

Mrs F. D. PELLING desires to intimate that she has taken over the above, which has just been renovated throughout.

CRITERION HOTEL, CHRISTCHURCH.

NEXT THEATRE ROYAL, CHRISTCHURCH. Best Beer, Wines, and Spirits Only Kept. GOOD ACCOMMODATION.

OXFORD HOTEL, MARKET SQUARE, CHRISTCHURCH.

This Hotel is beautifully and conveniently situated, facing the Rotunda and River, and offers all the comforts of a home.

RAILWAY HOTEL, MANCHESTER-STREET, CHRISTCHURCH.

Good Accommodation for the Travelling Public, combined with moderate charges. Best Liquors kept in stock.

EDWIN FOX'S HOTEL, CASHIEL STREET, CHRISTCHURCH.

Having taken possession of the above Hotel, and having had it renovated throughout, it is my intention to cater for the comfort of the General Public.

THE GLADSTONE HOTEL, (Off Papanui Road), CHRISTCHURCH.

AN UP-TO-DATE HOUSE. Excellent Accommodation. Liquors of Special Quality and in Great Variety.

PROVINCIAL HOTEL, CLIVE SQUARE, NAPIER.

The above Hotel has been entirely rebuilt in brick, and furnished and fitted up in the latest and most up-to-date manner.

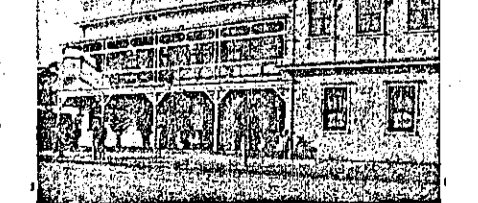
THE GLADSTONE HOTEL, (Off Papanui Road), CHRISTCHURCH.

AN UP-TO-DATE HOUSE. Excellent Accommodation. Liquors of Special Quality and in Great Variety.

THE GLADSTONE HOTEL, (Off Papanui Road), CHRISTCHURCH.

AN UP-TO-DATE HOUSE. Excellent Accommodation. Liquors of Special Quality and in Great Variety.

THE GLADSTONE HOTEL, (Off Papanui Road), CHRISTCHURCH.



THE GLADSTONE HOTEL, (Off Papanui Road), CHRISTCHURCH.

AN UP-TO-DATE HOUSE. Excellent Accommodation. Liquors of Special Quality and in Great Variety.

COMMERCIAL HOTEL, WAIPAWA

Private Suites of Apartments and every Convenience for the Accommodation of the public. WINES, SPIRITS & BEER of the Best Quality Only.

CALEDONIAN HOTEL, HASTINGS-STREET, NAPIER.

A. C. BARNES.....Proprietor. This Hotel is acknowledged to be the best between Napier and Wellington.

EMPIRE HOTEL, WAIPAWA

G. OAKENFULL.....Proprietor. This Hotel is acknowledged to be the best between Napier and Wellington.

PACIFIC HOTEL, HASTINGS.

A. ELLINGHAM (Late of Stortford Lodge Hotel), HAS taken over this well-known Hostelry, that has been presided over by Mr H. O. Oau-ton for the last twenty years.

MASONIC HOTEL, DANNEVERKE, H.B.

THE LEADING FAMILY AND COMMERCIAL HOTEL IN THE DISTRICT. First-class Accommodation. Nothing but the Best Brands of Wines and Spirits kept.

NAVIK HOTEL, WAIPUKURAU.

Tourists, Commercials and Families will find this Hotel replete and most up-to-date. Good trout-fishing in Waipukurau and Tukituki Rivers.

CRITERION HOTEL, NAPIER.

First-Class Accommodation for Tourists, Families and Commercial Men.

THE METROPOLITAN GRAND CENTRAL COFFEE PALACE AND RESTAURANT,

CORNER OF DEVON AND HGMONT STREETS, NEW PLYMOUTH. Within one minute's walk of Railway Station, Post Office and B.

Is specially adapted for the Convenience and Comfort of the Commercial and Social Travelling Public, and in every way equal to a First-class Hotel.

TERMS: PER DAY, 4s 6d (PER WEEK. ARROWSMITH.....Proprietor

E. J. WARREN

(Formerly of the Havelock and Paradise Hotels), HAS taken over the Albert Hotel, Hastings, which is now replete with every comfort and convenience.

WOODVILLE REFRESHMENT ROOMS

E. W. BUDDIOK .. PROPRIETOR. Mail Trains wait twenty minutes for Lunch.

POST OFFICE HOTEL, (Opposite Post Office, Main Street, Pahiatua.)

T. HENLEY (late of Working Men's Club, Palmerston North), has taken over the above well-known Hostelry, which will now be found up-to-date in all its appointments.

CLUB HOTEL, WOODVILLE.

First-class Accommodation for Families, Travellers, and Tourists. Well-lighted Sample Room. P. M. POOL ... PROPRIETOR.

TARANAKI PROVINCE

COMMERCIAL HOTEL, STRATFORD.

BEST OF ACCOMMODATION AT A VERY MODERATE RATE. HOT AND COLD BATHS. EXCELLENT TABLE KEPT.

MASONIC HOTEL, WAITARA.

ROBERT KIBBY..... PROPRIETOR. Announces that he has assumed the Proprietorship of this popular house.

EMPIRE HOTEL, HAWERA

(Corner of High and Princes Streets), MRS A. MAGUIRE.....Proprietress. Good Stabling, Billiards, Bath Room.

RED HOUSE HOTEL, DEVON-STREET, NEW PLYMOUTH.

EDWIN WHITTLE ... PROPRIETOR. Rebuilt and refurnished, this well-known hostelry now contains every comfort for guests.

THE METROPOLITAN GRAND CENTRAL COFFEE PALACE AND RESTAURANT,

CORNER OF DEVON AND HGMONT STREETS, NEW PLYMOUTH. Within one minute's walk of Railway Station, Post Office and B.

Is specially adapted for the Convenience and Comfort of the Commercial and Social Travelling Public, and in every way equal to a First-class Hotel.

TERMS: PER DAY, 4s 6d (PER WEEK. ARROWSMITH.....Proprietor