

TARANAKI—Continued.

THE TROCADERO, PRIVATE HOTEL AND RESTAURANT, CORNER OF EAST ROAD AND JULIET-STREET, STRATFORD (One Minute's Walk from the Railway Station).

S HAMROCK HOTEL PRINCES STREET, HAWERA. ALEX. A. LESLIE.....Proprietor

This well-known and popular Hotel having just undergone a thorough overhaul, and very extensive additions having been made, the proprietor can confidently cater for public patronage.

TARANAKI HOTEL, BROUGHAM STREET, NEW PLYMOUTH. E. F. BUCKTHOUGHT Proprietor

CLARENDON HOTEL, WAVERLEY.

THE BEST OF ACCOMMODATION FOR TRAVELLERS AND VISITORS.

Six Roomy Loose Boxes and Six Stalls. First-class Paddocking. The Best Brands of Ales, Wines, and Spirits.

B. T. BENNETT Proprietor.

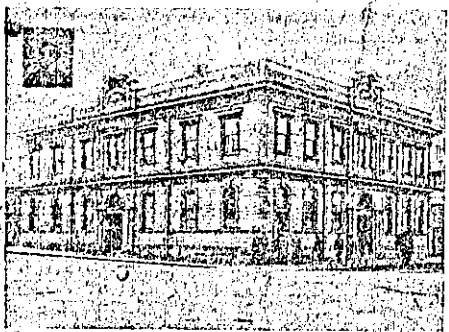
RAILWAY HOTEL, HAWERA. W. GREIG Proprietor.

The Mail Train stays here ten minutes. Meals provided to suit all Trains. Accommodation Good and Tariff Reasonable.

CENTRAL HOTEL, EGMONT STREET, PATEA. L. HINTZE, Proprietor (late of Masonic Hotel, Wanganui).

MASONIC HOTEL, Bedford Street, Patea. Mrs. KEANE Proprietress.

WANGANUI.



METROPOLITAN HOTEL, WANGANUI. ALF. MITCHELL Proprietor.

NEW CRITERION HOTEL, RIDGWAY STREET, WANGANUI. MR J. JARVIS Proprietor.

THE NEW COMMERCIAL HOTEL, WANGANUI.

Excellent Accommodation for Tourists and Travellers. Best Brands of Wines and Spirits kept in stock.

COMMERCIAL HOTEL, WAVERLEY.

THE COMMERCIAL HOUSE OF WAVERLEY. EXCELLENT ACCOMMODATION, COUSINE AND LIQUORS. CHAS. HARRISON Proprietor.

CHAVANNES' VICTORIA HOTEL, WANGANUI.

THE TOURIST'S HOTEL. Choicest Wines, Spirits and Cigars. Night Porter kept. Cook's Coupons Accepted.

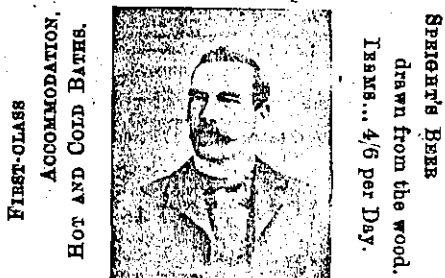
BOWLING GREEN HOTEL, CORNER OF FREDERICK AND CUMBERLAND STREETS, DUNEDIN.

W. D. WYATT, late of Wellington, bears to inform his Friends and Country Visitors that he has taken the above well-known Hotel, which has been thoroughly Renovated and Re-furnished.

IMPERIAL HOTEL, PRINCES STREET, DUNEDIN. M. McALLEN Proprietor.

MAC will sell the same brands of Wines, Spirits and Ales as he did at Bendigo.

TATTERSALL'S HOTEL (LATE RED LION), STAFFORD STREET, DUNEDIN. Three Minutes from Railway Station. Two Doors from Theatre.



FRED. CARTER, PROPRIETOR.

SEE! SEE! SEE! AT THE CORNER OF GREAT KING AND ST. ANDREW STREETS, DUNEDIN.

BRANSON'S HOTEL. The outlay is enormous, and is an important addition to the city. VERDICT—BRANSON'S HOTEL May safely be commended to Visitors as an Hotel where they will receive everything that will contribute to their safety, comfort and enjoyment.

PIER HOTEL, CRAWFORD, BOND, AND JETTY STREETS, DUNEDIN. MRS. PARKER Proprietress.

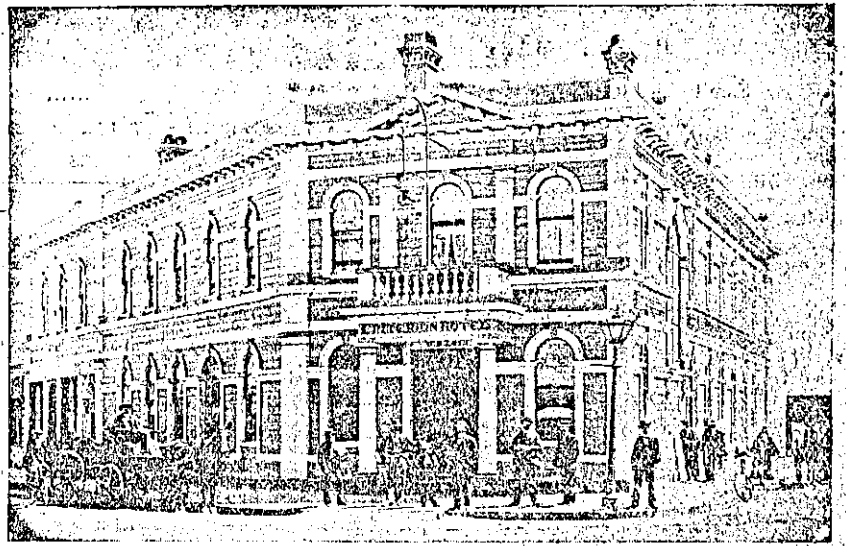
GLADSTONE HOTEL, MACLAGGAN STREET, DUNEDIN. JOHN COLLINS Proprietor.

GRIDIRON HOTEL, PRINCES-STREET, DUNEDIN. Conveniently and Centrally Situated, close to Post, Telegraph, and other Public Buildings.

CRITERION HOTEL, DUNEDIN. THE BEST PATRONISED AND MOST POPULAR HOTEL IN DUNEDIN. TARIFF: 6s Per Day. J. J. CONNOR Proprietor.

COACH AND HORSES HOTEL. G. M. MATHIESON, formerly of the Masonic Hotel, Havelock, and White Hart Hotel, Richmond, has taken over the above centrally situated and commodious premises.

BLENHEIM.



CRITERION HOTEL, BLENHEIM. G. B. LUSK Proprietor.

THE Leading Hotel on the West Coast. Every convenience of a First-class Hotel for Families, Visitors, Tourists, and Commercial Gentlemen.

WAKATU HOTEL, NELSON. First-class Accommodation for Commercial Travellers, and others, together with home comforts. EXCELLENT COUSINE.

POST OFFICE HOTEL, WELLINGTON-STREET, PICTON. C. DARVILL Proprietress.

PANAMA HOTEL, NELSON. Conveniently and pleasantly situated in the centre of the town, offers Good Accommodation to the travelling public and permanent boarders.

MASONIC HOTEL, BLENHEIM. Is Central, Popular, and Convenient; does a Commercial Business; has Splendid Appointments; Hot and Cold Baths; one of Alcock's Match Tables; and is the House selected by the N.Z.O.T. Club.

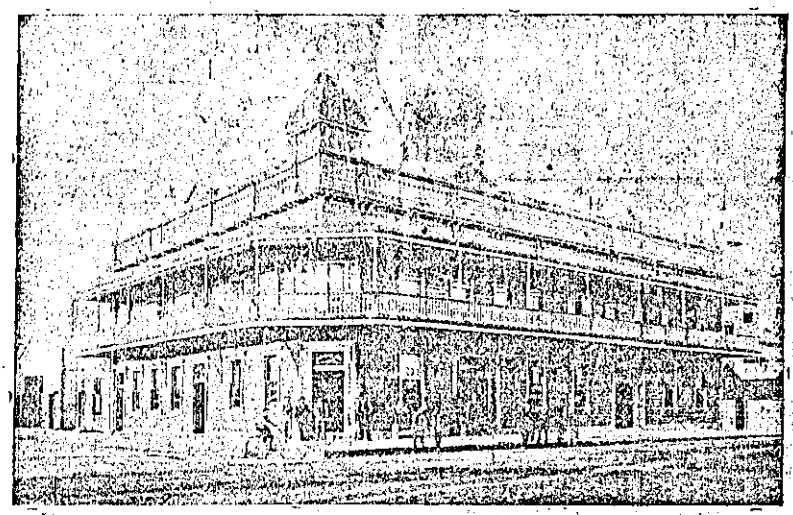
MASONIC HOTEL, NELSON. CHANGE OF OWNERSHIP. This long-established Hotel, which has always been the Headquarters in Nelson for Tourist and Commercial Travellers, has recently been purchased by Mr H. Baggett.

WESTPORT. GRAND HOTEL, PALMERSTON STREET, WESTPORT. H. NAHR Proprietor.

FEDERAL HOTEL, PICTON, N.Z. T. J. STOREY Proprietor.

LETTERS AND TELEGRAMS RECEIVE PROMPT ATTENTION. First-class Billiard Table. Hot and Cold Baths. Porter Meets all Trains and Steamers.

GLADSTONE HOTEL, REEFTON. This Hotel, having been thoroughly renovated and re-furnished throughout, now offers Superior Accommodation at a moderate tariff.



THE GISBORNE HOTEL, Corner of CHILDERS ROAD and LOWE STREET, GISBORNE. THE above Hotel re-built on most modern lines, is centrally and conveniently situated, being within two minutes walk of the Post Office, Railway Station and Wharf.