

WELLINGTON—Continued.

WHITE HART HOTEL, MARTON
The Leading Family and Commercial Hotel in the District. First-class Accommodation. Nothing but the Best Brands of Wines and Spirits kept. Hotel lighted with Electric Light throughout. Spacious and Well lighted Sample Rooms. S. J. GIBBONS Proprietor.

CENTRAL HOTEL, OTAKI.
Mr Thomas Messiter begs to inform the travelling public and friends that he has lately taken over the above, which has been renovated and furnished throughout, and offers accommodation second to none in Otaki. All liquors of the best brands obtainable. Speight's XXX Ales on Draught. T. MESSITER Proprietor.

DEVINE'S EMPIRE HOTEL, MAIN STREET, PALMERSTON NORTH.
Patrons can rely on being supplied with all leading Brands of Whiskies, Wines and Brandies. Special feature: First-class luncheon from 12 o'clock to 2 p.m. for One Guinea. Upstairs and dining-room under supervision of Mrs Devine. Up-to-date Billiard Room, under capable management. W. DEVINE (Late of Marton Hotel) Proprietor

COMMERCIAL HOTEL LAMBTON QUAY, WELLINGTON, (Leading from Main Wharf top of Grey Str)
Ask for what you want and you will get it. If not in Stock, you will be told so. T. L. SMITH Proprietor
Late of Lyttelton and Christchurch).

CLUB HOTEL, MARTON.
MR J. W. PROCTER (late of Turakina and Wanganui), having secured a long Lease of the above and effected extensive alterations and improvements, is now prepared to cater for the public in up to date style. Brands of all the best Wines, Spirits, Ales, etc., kept in stock. Ample Stabling Accommodation and Loose Boxes. CHARGES MODERATE. J. W. PROCTER Proprietor

EMPIRE HOTEL, FIELDING.
MR J. WAREHAM, late of the Club Hotel, Stratford, has taken over the above Hotel, and has had the same thoroughly renovated and re-furnished throughout. The Hotel now offers every convenience and comfort for the travelling public. Best Brands of Liquors kept in Stock. Speight's Dunedin Ale always on tap. Stabling attached to Hotel.

J. H. PAGNI'S WESTERN HOTEL, 11, WILLIS-STREET, WELLINGTON.
MR PAGNI, who is well-known among Footballers, Athletes and others, begs to inform all his friends and visitors that he has taken possession of the above popular house, which will, in future, be under his entire management. The house has been thoroughly renovated throughout, and is one of the most centrally situated hotels in Wellington. Best Brands of Wines, Spirits and Beer. Terms moderate. Telephone 1216.

OCCIDENTAL HOTEL, MASTERTON
The Sporting House of Masterton. Only Cash Spirits Sold. Best Dunedin Ales on Tap. CHARLES ORRIS Proprietor (Late of Greytown and Wellington).

POST OFFICE HOTEL, FOXTON.
This Hotel, having just been Rebuilt and Refurnished throughout, now affords the Best of Accommodation for Travellers, etc. The Best of Wines and Spirits Kept in Stock. Speight and Co's XXX Ale drawn straight from the wood always on tap. W. F. GRAY Proprietor

LEVIN HOTEL
(To which is attached the Horowhenua County Club and the Levin Aerated Water Factory.) D. HANNON Proprietor.

The Proprietor wishes to inform the travelling public that the above well and favourably-known Hotel has recently been enlarged and renovated, making it now one of the Best Hotels in the North Island, where patrons may rely on receiving every attention and the comforts of a home, while the tariff is moderate and the chef A1. Town Hall for theatrical and other performances, recently enlarged and improved. Best wines and spirits stocked. Dunedin and other celebrated colonial ales on tap. Large billiard and sample rooms. Cyclist Touring Club's "Rest," the visitors' resort. Horses and traps on hire. Beautiful view of Horowhenua Lake from balcony. Hot and cold water laid on. Separate apartments for families and ladies. Coaches meet all trains. Invalids, holiday makers, and persons seeking change of air cannot do better than patronise this establishment, as the climate of Levin is superb. Telegraphic address, "Levin Hotel, Levin."

CENTRAL HOTEL, WELLINGTON
(Two Minutes walk from Queen's Wharf). A. M. GOW (late of Dunedin) Proprietor
ONLY BEST BRANDS OF LIQUOR KEPT MODERATE CHARGES.

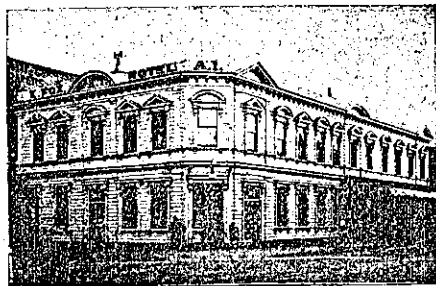
TEMPERANCE HOTEL, EKETAHUNA.
Mrs F. D. PELLING desires to intimate that she has taken over the above, which has just been renovated throughout. Permanent and casual boarders will find every comfort of a home. Tea, coffee, and refreshments at all hours. Afternoon tea for ladies. Charges moderate.

CHRISTCHURCH.

CRITERION HOTEL, NEXT THEATRE ROYAL, CHRISTCHURCH.
Best Beer, Wines, and Spirits Only Kept. GOOD ACCOMMODATION. Special Attention given to Theatre-goers during the intervals. W. BURNIP Proprietor.

OXFORD HOTEL, MARKET SQUARE CHRISTCHURCH.
This Hotel is beautifully and conveniently situated, facing the Rotunda and River, and offers all the comforts of a home. The Oxford has been entirely renovated and re-furnished throughout, and visitors to Christchurch will do well to give it a trial. Best brands of Wines and Spirits. DENIS FOGARTY Proprietor (Successor to Mrs Knox.)

RAILWAY HOTEL, MANCHESTER-STREET, CHRISTCHURCH.
Good Accommodation for the Travelling Public, combined with moderate charges. Best Liquors kept in stock. Excellent Stabling, Loose Boxes, etc. Meals got ready at any hour. TARIFF: 4/6 per diem, or 25/- per week. W. J. RAE Proprietor



EDWIN FOX'S HOTEL, CASHEL STREET, CHRISTCHURCH.
Having taken possession of the above Hotel, and having had it renovated throughout, it is my intention to cater for the comfort of the General Public. Boarders will find every convenience, including Hot, Cold, and Shower Baths. Illuminated with Electric Light, which is a safeguard against fire. Night Porter in attendance. Only First Quality Brand of Wines and Spirits Stocked Luncheon from 12 to 2, 1/- a special feature. Tariff, £2 2s. Telephone 424.

THE GLADSTONE HOTEL (Off Papanui Road), CHRISTCHURCH.
AN UP-TO-DATE HOUSE. Excellent Accommodation. Liquors of Special Quality and in Great Variety. H. PIPER Proprietor

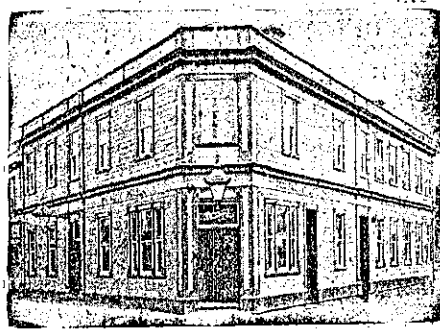
HAWKE'S BAY PROVINCE.

PROVINCIAL HOTEL, CLIVE SQUARE, NAPIER.
J. W. McDUFF Proprietor
The above Hotel has been entirely rebuilt in brick, and furnished and fitted up in the latest and most up-to-date manner. Has fine roomy and well-ventilated bedrooms, with numerous sitting, smoking, and waiting rooms. The Billiard Room is the Best in the District, fitted up with two first-class tables, and under the charge of a competent marker. Best Brands of Wines, Spirits etc., Only Kept.



ALBION HOTEL, NAPIER.
THE SPORTING HOUSE OF NAPIER. Now under entirely new Management. EXCELLENT ACCOMMODATION. LIBERAL TABLES. BEST LIQUORS. G. H. MUMLEISEN Proprietor

COMMERCIAL HOTEL, WAIPAWA
Private Suites of Apartments and every Convenience for the Accommodation of the public. WINES, SPIRITS & BEER of the Best Quality Only. A FIRST-CLASS BILLIARD TABLE. Good Stabling and Paddock Accommodation. W. FELLOW Proprietor



CALEDONIAN HOTEL, HASTINGS-STREET, NAPIER.
A. C. BARNES Proprietor

EMPIRE HOTEL, WAIPAWA
G. OAKENFULL Proprietor
This Hotel is acknowledged to be the best between Napier and Wellington. Families and the travelling public can rely upon the best accommodation in the province. WINES, SPIRITS & BEER of the Best Quality only. GOOD STABLES. Large Number of Loose Boxes.

PACIFIC HOTEL, HASTINGS.

A. ELLINGHAM (Late of Stortford Lodge Hotel), HAS taken over this well-known Hostelery, that has been presided over by Mr H. O Caulton for the last twenty years. The Hotel will be re-furnished throughout and made thoroughly up-to-date as a Family and Commercial Hotel. Splendid Loose-box Accommodation for Visiting Trainers. Telephone Communication between Napier and Hastings. All Telegrams carefully attended to. ALF. ELLINGHAM Proprietor.



MASONIC HOTEL, DANNEVIRKE, H.B.
THE LEADING FAMILY AND COMMERCIAL HOTEL IN THE DISTRICT. First-class Accommodation. Nothing but the Best Brands of Wines and Spirits kept. Speight's Dunedin Beer always on draught. Commodious and well-lighted Sample Rooms. Porter meets all trains. Night Porter in attendance. Correspondence punctually attended to. P. O. Box 11. JOSEPH MITCHELL (Late of Hunterville), Proprietor.

UNDER THE PATRONAGE OF THE EARL OF RANFURLY. NAVISTOCK HOTEL, WAIPUKURAU.
Tourists, Commercials and Families will find this Hotel replete and most up-to-date. Good trout-fishing in Waipukurau and Tukituki Rivers. Shooting on lake three-quarters of a mile from Hotel. Stabling and Paddocks. R. HUNT Proprietor.

CRITERION HOTEL, NAPIER.
First-Class Accommodation for Tourists, Families and Commercial Men. S. CHARLTON Proprietor.

E. J. WARREN (Formerly of the Havelock and Paradise Hotels), HAS taken over the Albert Hotel, Hastings, which is now replete with every comfort and convenience and he will be glad to see all friends, both new and old. First-class Accommodation for Boarders and Travellers. Terms Moderate. Luncheon 12 noon to 2 p.m. Rob-John's Prize Ale on draught. Ward's, Speight's and Manning's in bottle. Nothing but Best Brands of Wines and Spirits stocked. Telephone No. 11.

WOODVILLE REFRESHMENT ROOMS
E. W. RUDDICK Proprietor.
Mail Trains wait twenty minutes for Lunch. The Railway passengers, going either North or South, should be acquainted with the fact that at the Woodville Refreshment Rooms they can have a good Hot Luncheon. Railway guards will inform the traveller how much time he will have at Woodville.

POST OFFICE HOTEL (Opposite Post Office, Main Street, Pahiatua.)
T. HENLEY (late of Working Men's Club, Palmerston North), has taken over the above well-known Hostelery, which will now be found up-to-date in all its appointments. Telephone connection. All Wines, Spirits, and Ales guaranteed. Stabling accommodation. Terms moderate.

CLUB HOTEL, WOODVILLE.
First-class Accommodation for Families, Travellers, and Tourists. Well-lighted Sample Room. P. M. POOL Proprietor. Telephone No. 1. P. O. Box 58.

TARANAKI PROVINCE

COMMERCIAL HOTEL, STRATFORD.
BEST OF ACCOMMODATION AT A VERY MODERATE RATE. HOT AND COLD BATHS. EXCELLENT TABLE KEPT. ALL LIQUORS AT SPEIGHT'S XXX ALES ON DRAUGHT. Ample Stabling. GEORGE DAVISON (late of Canterbury) Proprietor

MASONIC HOTEL, WAITARA.
ROBERT KIBBY Proprietor
Announces that he has assumed the Proprietorship of this popular house. The Best Accommodation and Good Cuisine. WINES, BEERS AND SPIRITS OF THE BEST QUALITY.

EMPIRE HOTEL, HAWERA (Corner of High and Princes Streets), MRS A. MAGUIRE Proprietress.
Good Stabling, Billiards, Bath Room. Wines, Beers and Spirits Unsurpassed. Mrs MAGUIRE wishes to draw the attention of the Auckland Public to the ONE SHILLING LUNCHEON provided. Tariff: 4/6 per day; only one price.



RED HOUSE HOTEL, DEVON-STREET, NEW PLYMOUTH.
EDWIN WHITTLE Proprietor
Rebuilt and refurnished, this well-known hostelry now contains every comfort for guests. The Liquors stocked are the choicest to be bought in the Market. PAUL'S XXXX ALES ON DRAUGHT.

THE METROPOLITAN GRAND CENTRAL COFFEE PALACE AND RESTAURANT,

CORNER OF DEVON AND REGENT STREETS, NEW PLYMOUTH
Within one minute's walk of Railway Station, Post Office and B. Is specially adapted for the Convenience and Comfort of the Commercial and Social Travelling Public, and in every way equal to a First-class Hotel. Lofty and airy bedrooms, Ladies' Tea Rooms, Drawing-room, Spacious Dining-room, Commercial Room, Hot, Cold and Shower Baths, Convenient and Commodious Sample Rooms. The kitchen is under an Experienced Chef. TERMS: PER DAY, 4s 6d PER WEEK. ABROWSMITH Proprietor