

TARANAKI--Continued.

THE TROADERO, PRIVATE HOTEL AND RESTAURANT. CORNER OF EAST ROAD AND JULIET-STREET, STRATFORD (One Minute's Walk from the Railway Station).

Specially adapted for the Convenience and Comfort of the Travelling Public. Commodious and Airy Bed and Sitting Rooms. Electric Light. Hot and Cold Baths. The Kitchen is under the Supervision of an experienced Chef. Terms: 4/6 per day. PALMER & CO. Proprietors

SHAMROCK HOTEL PRINCES STREET, HAWERA. ALEX. A. LESLIE Proprietor

This well-known and popular Hotel having just undergone a thorough overhaul, and very extensive additions having been made, the proprietor can confidently cater for public patronage. Hot, cold and shower baths. Spacious Commercial Room for travellers. TARIFF: 4/6 per day.

TARANAKI HOTEL, BROUGHAM-STREET, NEW PLYMOUTH. E. F. BUCKTHOUGHT Proprietor

All Wines and Spirits stocked of the best quality. Twenty-year-old Guaranteed Liqueur Whiskey a Specialty. PAUL'S XXXX ALES.

CLARENDON HOTEL, WAVERLEY.

THE BEST OF ACCOMMODATION FOR TRAVELLERS AND VISITORS.

Six Roomy Loose Boxes and Six Stalls. First-class Paddock. The Best Brands of Ales, Wines, and Spirits.

Telephone No. 6. P.O. Box No. 7.

B. T. BENNETT Proprietor.

RAILWAY HOTEL, HAWERA. W. GREIG Proprietor.

The Mail Train stays here ten minutes. Meals provided to suit all Trains. Accommodation Good and Tariff Reasonable.

CENTRAL HOTEL, REMONT STREET, PATEA. L. HINTZE, Proprietor (late of Masonic Hotel, Wanganui). L.H. desires to notify the residents of Patea and surrounding districts, that he has taken over the above popular Hotel, where he will be happy to welcome old friends and make new ones.

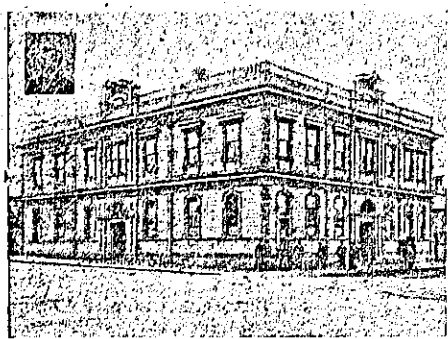
The best brands of Ales, Wines, and Spirits kept in stock. Billiard Room fitted up with one of Alcock's best Tables. Good Stabling and Paddock.

MASONIC HOTEL, Bedford Street, Patea.

MRS. KEANE Proprietress. Mrs. Keane begs to inform her many friends and the residents generally of Patea and district, that she has assumed the proprietorship, and that it will be her aim to uphold the past high reputation of the Hotel.

English and Colonial Ale and Stouts always on supply. Wines and Spirits of best brands only kept in stock. Prompt attention, civility, and cleanliness in every department.

WANGANUI.



METROPOLITAN HOTEL, WANGANUI. ALF. MITCHELL Proprietor.

This commodious and well-furnished family and commercial hotel is almost opposite railway station and town wharves. It has a lovely promenade-roof which commands a splendid view of the town. The cuisine is in charge of an experienced chef. Alf. Mitchell's name is sufficient guarantee that nothing but the best of wines and spirits will be kept. Night porter always in attendance. Visitors can rely upon getting the best of attention together with civility. Letters and telegrams punctually attended to. P.O. Box 138. Telephone 84.

NEW CRITERION HOTEL, RIDGWAY STREET, WANGANUI.

MR. J. JARVIS (Late of the Hulcombe Hotel), Has taken over from Mr P. E. Dover the above splendid and commodious Hostelry.

No pains will be spared to make the New Criterion second to none on the Coast.

Only the best brands of Liquors will be kept. All Telegrams and Letters will receive prompt attention.

JOHN JARVIS Proprietor.

THE NEW COMMERCIAL HOTEL, WANGANUI.

Excellent Accommodation for Tourists and Travellers. Best Brands of Wines and Spirits kept in stock. DUNEDIN BEER ALWAYS ON TAP. Half minute's walk from River Steamers.

COMMERCIAL HOTEL, WAVERLEY.

THE COMMERCIAL HOUSE OF WAVERLEY.

EXCELLENT ACCOMMODATION, CUISINE AND LIQUORS.

CHAS. HARRISON Proprietor. (Late of New Plymouth and Ivin.)

CHAVANNES' VICTORIA HOTEL, WANGANUI.

THE TOURIST'S HOTEL.

Choicest Wines, Spirits and Cigars. Night Porter kept. Cook's Coupons Accepted.

Write or wire for rooms to J. S. PALMER, Proprietor.

DUNEDIN.

BOWLING GREEN HOTEL, CORNER OF FREDERICK AND CUMBERLAND STREETS, DUNEDIN.

W. D. WYATT, late of Wellington, begs to inform his Friends and Country Visitors that he has taken the above well-known Hotel, which has been thoroughly Renovated and Re-furnished, and is now in a position to offer his Patrons First class Accommodation. TERMS MODERATE. NOTED HOUSE FOR THE BEST WINES & SPIRITS

IMPERIAL HOTEL, PRINCES STREET, DUNEDIN.

M. McALLEN Proprietor (Late of Bendigo Hotel, Alexandra).

MAC will sell the same brands of Wines, Spirits and Ales as he did at Bendigo.

TATTERSALL'S HOTEL (LATE RED LION), STAFFORD STREET, DUNEDIN.

Three Minutes from Railway Station. Two Doors from Theatre.

Advertisement for Tattersall's Hotel featuring a portrait of Fred Carter, Proprietor, and text: 'FIRST-CLASS ACCOMMODATION, HOT AND COLD BATHS. BREWERY'S BEER drawn from the wood. Terms... 4/6 per Day.'

FRED. CARTER, PROPRIETOR.

SEE! SEE! SEE! AT THE CORNER OF GREAT KING AND ST. ANDREW STREETS, DUNEDIN.

BRANSON'S HOTEL.

The outlay is enormous, and is an important addition to the city.

VERDICT--

BRANSON'S HOTEL

May safely be commended to Visitors as an Hotel where they will receive everything that will contribute to their safety, comfort and enjoyment.

CHAS. B. M. BRANSON Proprietor.

PIER HOTEL, CRAWFORD, BOND, AND JETTY STREETS, DUNEDIN.

MRS PARKER Proprietress. (Late of Hotel Metropole, St Clair.)

Having recently purchased this Hotel and had it thoroughly renovated, it now affords the Best Accommodation for Tourists and Travellers. Charges Moderate.

GLADSTONE HOTEL, MACLAGGAN STREET, DUNEDIN.

JOHN COLLINS Proprietor. (Late of Al Hotel, Pelichet Bay.)

The most centrally situated Hotel in the City. First-class accommodation for Tourists, Travellers and Boarders. Suites of rooms for families. Charges moderate. A Special Feature: 1/- Luncheon from 12 to 2 o'clock. Hot, cold, and shower baths. The very best of Wines, Ales, and Spirits supplied.

GRIDIRON HOTEL, PRINCES-STREET, DUNEDIN.

Conveniently and Centrally Situated, close to Post, Telegraph, and other Public Buildings.

Good and Ample Accommodation for the Travelling Public. Best Brands of Wines, Spirits, Ales, Etc. Trams pass the door every few minutes.

Mrs M. PETERS Proprietress

CRITERION HOTEL, DUNEDIN.

THE BEST PATRONISED AND MOST POPULAR HOTEL IN DUNEDIN.

TARIFF: 5s Per Day.

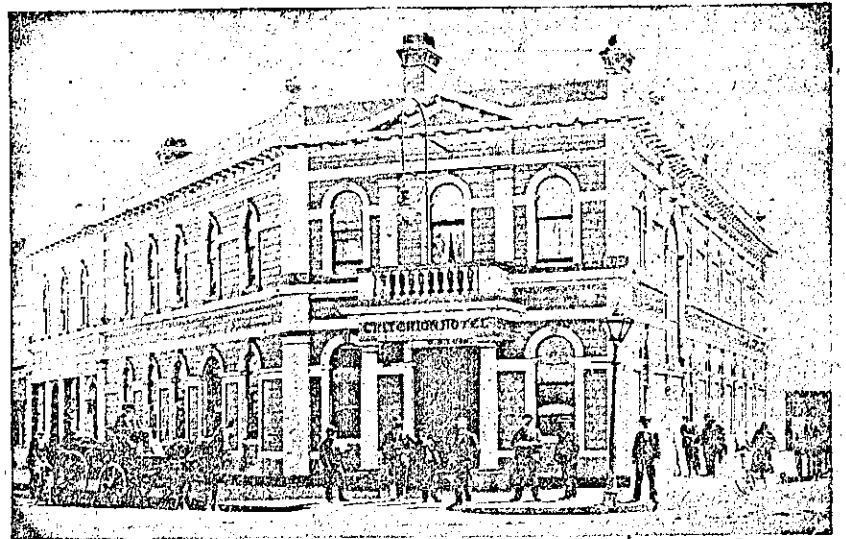
J. J. CONNOR Proprietor.

NELSON.

COACH AND HORSES HOTEL.

G. M. MATHIESON, formerly of the Masonic Hotel, Havelock, and White Hart Hotel, Richmond, has taken over the above centrally situated and commodious premises, where it will be his pleasure to make every provision for the wants and comforts of all patrons. The interior of the house has been thoroughly renovated, and the Coach and Horses will be found one of the most comfortable hostleries in Nelson Province. The best of Wines only kept. Good

BLLENHEIM.



UNDER VICE-REGAL PATRONAGE.

UNDER VICE-REGAL PATRONAGE.

CRITERION HOTEL, BLENHEIM.

G. B. LUSK PROPRIETOR.

THE Leading Hotel on the West Coast. Every convenience of a First-class Hotel for Families, Visitors, Tourists, and Commercial Gentlemen. Hot, Cold, and Shower Baths. Commodious Sample Rooms. First-class Billiard Table. The Choicest Wines, Spirits and Ales. Letters and Telegrams receive Prompt Attention. Night Porter in Attendance.

WAKATU HOTEL

(Corner of Bridge and Collingwood Streets) NELSON.

First-class Accommodation for Commercial Travellers, and others, together with home comforts. EXCELLENT CUISINE.

Wines and Spirits of Best Quality. Hot, Cold, and Shower Baths.

MRS F. B. VAUSE Proprietress.

PANAMA HOTEL

NELSON.

Conveniently and pleasantly situated in the centre of the town, offers Good Accommodation to the travelling public and permanent boarders.

The Liquors are the best procurable, and a First-class Table is kept.

G. NICHOLAS Proprietor.

MASONIC HOTEL, NELSON.

CHANGE OF OWNERSHIP.

This long-established Hotel, which has always been the Headquarters in Nelson for Tourist and Commercial Travellers, has recently been purchased by Mr H. Broughton.

The Hotel has been thoroughly Renovated and all the Rooms are being Refitted in modern style. No effort will be spared to make all visitors thoroughly comfortable.

PICTON

FEDERAL HOTEL

PICTON, N.Z.

T. J. STOREY Proprietor [Late Representative Booth, Macdonald & Co.]

THE Building is entirely New and of Brick, with all Modern Appliances and Conveniences. The Sanitary Arrangements and Ventilation have been specially studied, and the house is First-class in every detail.

VISITORS to Picton will find that no effort will be spared to afford them comfort, whilst the Tariff is Most Moderate.

LETTERS AND TELEGRAMS RECEIVE PROMPT ATTENTION.

First-class Billiard Table. Hot and Cold Baths. Porter Meets all Trains and Steamers.

POST OFFICE HOTEL

WELLINGTON-STREET, PICTON

(Within a Minute's Walk of Post Office Wharf and Railway Station.)

C. DARVILL (late of Foxton) Proprietress

FIRST-CLASS ACCOMMODATION FOR TRAVELLERS & FAMILIES.

MASONIC HOTEL, BLENHEIM

Is Central, Popular, and Convenient; does a Commercial Business; has Splendid Appointments; Hot and Cold Baths; one of Alcock's Match Tables; and is the House selected by the N.Z.C.T. Club. MODERATE TARIFF.

J. PENNEY Proprietor.

WESTPORT.

GRAND HOTEL,

PALMERSTON STREET,

WESTPORT,

H. NAHR Proprietor

REEFTON.

GLADSTONE HOTEL,

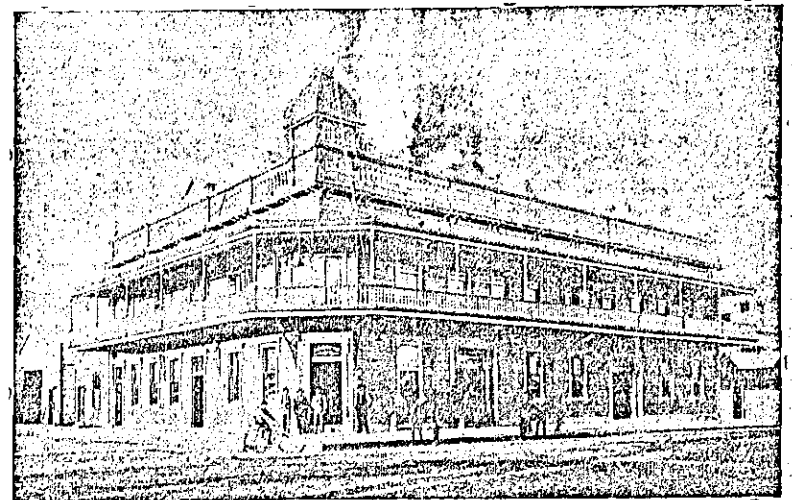
REEFTON.

This Hotel, having been thoroughly renovated and re-furnished throughout, now offers Superior Accommodation at a moderate tariff.

Best Brands of Wines, Spirits, Ales, etc.

TARIFF: 4/6 PER DIEM.

R. DUMPHY Proprietor



THE GISBORNE HOTEL,

Corner of CHILDER'S ROAD and LOWE STREET, GISBORNE.

THE above Hotel re-built on most modern lines, is centrally and conveniently situated, being within two minutes walk of the Post Office, Railway Station and Wharf. A balcony of 100 feet by 8 feet surrounds the building, affording an excellent view of the Harbor and Shipping, and offering easy egress in the event of fire. Hot, Cold and Shower Baths. From its quiet situation is specially adapted for Tourists and Families.

J. H. MARTIN Proprietor.