

TARANAKI—Continued.

THE TROCADERO, PRIVATE HOTEL AND RESTAURANT, CORNER OF EAST ROAD AND JULIET-STREET, STRATFORD (One Minute's Walk from the Railway Station).

Specially adapted for the Convenience and Comfort of the Travelling Public. Commodious and Airy Bed and Sitting Rooms. Electric Light. Hot and Cold Baths. The Kitchen is under the Supervision of an experienced Chef. TERMS: 4/8 per day. PROPRIETOR PARKER & CO.

COMMERCIAL HOTEL

NORMANBY.

W. GREIG.....PROPRIETOR.

WESTPORT.

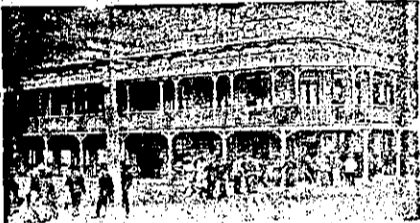


GRAND HOTEL, PALMERSTON STREET, WESTPORT,

H. NAHR.....PROPRIETOR

GREYMOUTH.

GILMER HOTEL



GREYMOUTH. This establishment is situated immediately opposite the Wharf and within three minutes' walk of Post Office and Railway Station. From its spacious balcony a grand view is obtained of the surrounding country. Acknowledged to be the leading hotel on the West Coast. Sample Rooms and Billiard Room. Night porter kept. Greymouth Brewery Company all on draught.

T. OXENHAM, Proprietor.

EMPIRE HOTEL,

NEB OF TAIRUI AND MAOKAY STREETS, GREYMOUTH.

MR Wm. CLAUGHESY

(Late of Ashton's Family Hotel),

BEGS to intimate to the General Public that he has taken charge of that favourably-situated Hostelry known as the Empire Hotel, and trusts that by strict attention to business to merit a fair share of public patronage.

INVERCARGILL.

HIBERNIAN HOTEL,

DEE-STREET, INVERCARGILL.

MR THOS KETT

(Late of the Loyal Hotel, Invercargill),

HAVING assumed Proprietorship of the above well-known House, is prepared to cater for the Public in first-class style. Only the best Brands of Wines, Spirits, Ales, etc., sold. Excellent Stabling. Loose Boxes

THOMAS KETT.....Proprietor

TIMARU.

CLUB HOTEL,

TIMARU.

This Hotel has been renovated throughout, and now offers excellent Accommodation to the Travelling Public. Local and XXXX Beer always on Tap. Walker's Special Whisky on Draught. Sample Rooms in connection with premises.

JOHN DORE.....Proprietor

DUNEDIN.

BOWLING GREEN HOTEL, CORNER OF FREDERICK AND CUMBERLAND STREETS, DUNEDIN.

W. D. WYATT, late of Wellington, begs to inform his Friends and Country Visitors that he has taken the above well-known Hotel which has been thoroughly Renovated and Re-furnished, and is now in a position to offer his Patrons First class Accommodation. TERMS MODERATE. NOTED HOUSE FOR THE BEST WINES & SPIRITS

IMPERIAL HOTEL, PRINCES STREET, DUNEDIN.

TATTERSALL'S HOTEL (LATE RED LION), STAFFORD STREET, DUNEDIN.

Three Minutes from Railway Station. Two Doors from Theatres.

FIRST-CLASS ACCOMMODATION. HOT AND COLD BATHS.



SPICIGER'S BEER drawn from the wood. TERMS... 4/6 per Day.

FRED CARTER, PROPRIETOR.

BRANSON'S HOTEL,

CORNER OF GREAT KING AND ST. ANDREW STREETS, DUNEDIN.

This Hotel is now undergoing extensive alterations, and when finished will be second to none for accommodation for Visitors and Boarders.

SEE FUTURE ADVERTISEMENT. CHAS. B. M. BRANSON.....Proprietor

PIER HOTEL, CRAWFORD, BOND, AND JETTY STREETS, DUNEDIN.

MRS PARKER.....PROPRIETRESS. (Late of Hotel Metropole, St Clair.)

Having recently purchased this Hotel and had it thoroughly renovated, it now affords the Best Accommodation for Tourists and Travellers. Charges Moderate.

GLADSTONE HOTEL, MAOLAGGAN STREET, DUNEDIN.

JOHN COLLINS.....PROPRIETOR. (Late of A1 Hotel, Pelichet Bay.)

The most centrally situated Hotel in the City. First-class accommodation for Tourists, Travellers and Boarders. Suites of rooms for families. Charges moderate. A Special Feature: 1/- Lunch from 12 to 2 o'clock. Hot, cold, and shower baths. The very best of Wines, Ales, and Spirits supplied.

GRIDIRON HOTEL, PRINCES-STREET, DUNEDIN.

Conveniently and Centrally Situated, close to Post, Telegraph, and other Public Buildings.

Good and Ample Accommodation for the Travelling Public. Best Brands of Wines, Spirits, Ales, Etc. Trams pass the door every few minutes.

Mrs M. PETERS.....Proprietress

CRITERION HOTEL, DUNEDIN.

THE BEST PATRONISED AND MOST POPULAR HOTEL IN DUNEDIN.

TARIFF: 6s Per Day.

J. J. CONNOR.....Proprietor

PICTON.

FEDERAL HOTEL, PICTON, N. Z.

T. J. STOREY.....Proprietor (Late Representative Booth, Macdonald & Co.)

THE Building is entirely New and of brick, with all Modern Appliances and Conveniences. The Sanitary Arrangements and Ventilation have been specially studied, and the house is First-class in every detail.

VISITORS to Picton will find that no effort will be spared to afford them comfort, whilst the Tariff is Most Moderate.

LETTERS AND TELEGRAMS RECEIVE PROMPT ATTENTION.

First-class Billiard Table. Hot and Cold Baths. Porter Meets all Trains and Steamers.

MASONIC HOTEL, BLENHEIM

Is Central, Popular, and Convenient; does a Commercial Business; has Splendid Appointments; Hot and Cold Baths; one of Alcock's Match Tables; and is the House selected by the N.Z.C.T. Club. MODERATE TARIFF.

J. PENNEY PROPRIETOR.

POST OFFICE HOTEL, WELLINGTON-STREET, PICTON

(Within a Minute's Walk of Post Office, Wharf and Railway Station.)

C. DARVILL (late of Foxton).....Proprietress

FIRST-CLASS ACCOMMODATION FOR TRAVELLERS & FAMILIES.

NELSON.

COACH AND HORSES HOTEL.

G. M. MATHIESON, formerly of the Masonic Hotel, Havelock, and White Hart Hotel, Richmond, has taken over the above centrally situated and commodious premises, where it will be his pleasure to make every provision for the wants and comforts of all patrons. The interior of the house has been thoroughly renovated, and the Coach and Horses will be found one of the most comfortable hostleries in Nelson Province. Terms moderate. The best of liquors only kept. Good stabling.

MASONIC HOTEL, NELSON.

CHANGE OF OWNERSHIP.

This long-established Hotel, which has always been the Headquarters in Nelson for Tourist and Commercial

BLENHEIM



UNDER VICE-REGAL PATRONAGE.

UNDER VICE-REGAL PATRONAGE.

CRITERION HOTEL, BLENHEIM. G. B. LUSK PROPRIETOR.

THE Leading Hotel on the West Coast. Every convenience of a First-class Hotel for Families, Visitors, Tourists, and Commercial Gentlemen. Hot, Cold, and Shower Baths. Commodious Sample Rooms. First class Billiard Table. The Choicest Wines, Spirits and Ales. Letters and Telegrams receive Prompt Attention. Night Porter in Attendance.

WAKATU HOTEL

(Corner of Bridge and Collingwood Streets) NELSON.

First-class Accommodation for Commercial Travellers, and others, together with home comforts. EXCELLENT COOKING. Wines and Spirits of Best Quality. Hot, Cold, and Shower Baths.

MRS F. B. VAUSE.....Proprietress.

PANAMA HOTEL

NELSON.

Conveniently and pleasantly situated in the centre of the town, offers Good Accommodation to the travelling public and permanent boarders.

The Liquors are the best procurable, and a First-class Table is kept.

G. NICHOLAS.....Proprietor.

WANGANUI.



RED LION HOTEL, Wanganui (just over the Town Bridge), J. Cottrell, late of Gisborne, Proprietor. First-class accommodation for country customers and travelling public. Only the Best Brands of Wines and Spirits kept. A good Billiard Table and the best of Stabling Accommodation. Loose Boxes and every convenience. Telephone No. 279.

FOSTER'S HOTEL

TAUPO QUAY, WANGANUI (NEARLY OPPOSITE TOWN BRIDGE).

The above Hotel has been re-built and re-furnished and affords every Comfort to Commercial Travellers and Public.

W. H. G. FOSTER.....Proprietor.

NEW CRITERION HOTEL, RIDGWAY STREET, WANGANUI.

MR J. JARVIS

(Late of the Halcombe Hotel),

Has taken over from Mr P. E. Dyer the above splendid and commodious Hostelry.

No pains will be spared to make the New Criterion second to none on the Coast.

Only the best brands of Liquors will be kept. All Telegrams and Letters will receive prompt attention.

JOHN JARVIS.....PROPRIETOR.

ALBION HOTEL

(Opposite the Courthouse, Public Library and Gardens), WANGANUI.

B. T. BENNETT desires to intimate that he has taken over the above Hotel, and it will be his endeavour to study the requirements of Customers.

Excellent Accommodation for Travellers and Tourists.

All Table kept. Telephone No. 204.

B. T. BENNETT.....Proprietor

(Late of Criterion Boarding-house).

REEFTON.

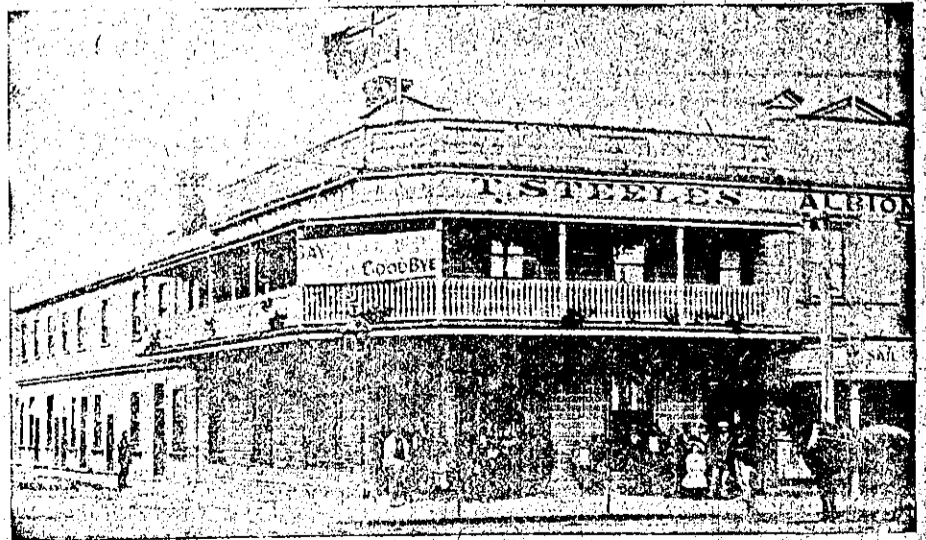
GLADSTONE HOTEL, REEFTON.

This Hotel, having been thoroughly renovated and re-furnished throughout, now offers Superior Accommodation at a moderate tariff.

Best Brands of Wines, Spirits, Ales, etc.

TARIFF: 4/8 PER DIEM.

R. DUMPHY.....Proprietor



ALBION CLUB HOTEL, GISBORNE. MR AND MRS STEELE

HAVE pleasure in announcing that they have taken possession of the above well-known and Commodious Family Hotel, and to meet the request of a large number of our Country Patrons, Dinner will be at 1 o'clock on SATURDAYS. THE HOURS FOR MEALS WILL BE AS FOLLOWS:—Breakfast, 8 o'clock; Lunch, 1 o'clock; Dinner, 6 o'clock. A FIRST-CLASS TABLE, under the Personal Supervision of MRS STEELE, will be maintained. TERMS: 6s per Day, or 30s per week. Travellers, Visitors and Families can rely upon the Comfort of a home being obtained at the ALBION CLUB HOTEL. Conveyance meets all steamers. Telephone No. 42.