

PICTON.

FEDERAL HOTEL

PICTON, N. Z.
Close to Railway and Shipping, and commanding a grand view of the Bay.
HOT, COLD, & SHOWER BATHS.
FIRST-CLASS BILLIARD TABLE,
NIGHT PORTER IN ATTENDANCE
Every Modern Convenience for Comfort of Families, Tourists, and Commercial.
Special arrangements for Picnic and Pleasure Pa for Fishing, Yachting, &c.
DAILY TRIPS DOWN THE SOUNDS.
Pleasure Boats at the disposal of Visitors.
Letters and Telegrams receive prompt attention
A. HARDY .. Proprietor

WESTPORT.



GRAND HOTEL, WESTPORT

H. NAHR - PROPRIETOR

DUNEDIN.

IMPERIAL HOTEL, DUNEDIN

(Princes Street).
BEN FULLER - PROPRIETOR
This hotel is central and convenient to all the public offices, and, as the house has been entirely renovated, country visitors can depend on receiving every comfort and attention. Best ales, wines, and cigars. Hot, cold, and shower baths. Telephone 764

POWERS'

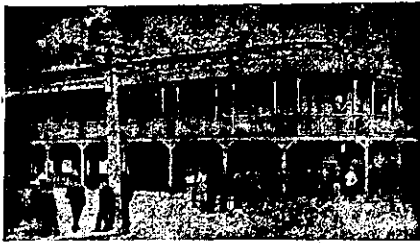
EUROPEAN HOTEL, DUNEDIN.

GREYMOUTH.

COMMERCIAL HOTEL, GREYMOUTH

Every Attention Given to the Requirements of the Travelling Public & Boarders. THE ACCOMMODATION BEING EXCELLENT.
The Dining-room under the personal supervision of Mrs McCarthy, which is a sufficient guarantee that the Table will be A1.
Only the Best of Wines, Beers, and Spirits kept on hand.
One of Alcock's Billiard Tables, under the care of an efficient marker, is connected with the hotel.
J. MCCAETHY - PROPRIETOR.

GILMER HOTEL



GREYMOUTH.
This establishment is situated immediately opposite the Wharf and within three minutes' walk of Post Office and Railway Station. From its spacious balcony a grand view is obtained of the surrounding country. Acknowledged to be the leading hotel on the West Coast. Sample Rooms and Billiard Room. Night porter kept. Greymouth Brewery Company all on draught.
T. OXENHAM, Proprietor.

FRED. LOVELOCK

COMMISSION AGENT
NEW PLYMOUTH,

J. WILSON

[LATE OF PROFFIT AND WILSON],
NAPIER.

Business Strictly Confidential.
First Transaction must be Accompanied by Cash or Reference.
Replies to Telegrams must be Prepaid.
Bank References Given if Required.
NO REPLY. NO BUSINESS.

AUSTIN WALSH & CO., WYNDHAM STREET

AUCKLAND.

Sole Manufacturers of the following Brands-

CIGARETTE TOBACCO:

Golden Fleece
LONG CUT (MILD)

Virginia Returns
LONG CUT (MEDIUM)

Old Virginia
LONG CUT (FULL)

Sokol
LONG CUT (MEDIUM)

PIPE TOBACCO-

Honey Dew
FLAKE CUT (Medium or Full)

Golden Crown Mixture

MANILA AGENCIES-

LA VANDALIA
LA HELIOS CIGARS



N.Z. AGENTS FOR
"CROWN BRAND" NICOTINE SHEEP DIP.

TADDY & CO., LONDON
MYRTLE GROVE CIGARETTES
RICHMOND TOBACCO CO. LIVERPOOL.
PIONEER NAVY CUT.

IMPORTERS OF
FANCY GOODS, TOBACCONISTS SUNDRIES,

HAVANA, MANILA, INDIAN AND CONTINENTAL CIGARS.

AGENTS FOR

COPE BROS. AND CO., Ltd.

TOBACCO. CIGAR AND CIGARETTE MANUFACTURERS, LIVERPOOL AND LONDON

Peerless Cigarettes

Rosebud Tobacco

Navy Cut Tobacco

Cut Bar Tobacco

Cut Plug Tobacco

Turkish Cigarettes

ENCOURAGE LOCAL INDUSTRY

BUILD UP THE NORTH NOT THE SOUTH!

As we Purchase all the LOCAL WHEAT AND OATS we can get at full Market Rates, and use only LOCAL COAL for steam purposes, also give employment to a large number of hands in manufacturing our well-known Brands of Flour, Oatmeal, Rolled, and Flaked Oats, Germina, etc If this industry did not exist

WHAT WOULD OUR GRAIN-GROWERS AND COAL MINERS DO?
So, when ordering Flour, Oatmeal, Rolled Oats, etc. keep the foregoing facts before you, and insist on having

"PREMIER" OR "CHAMPION" FLOUR

AND "STANDARD" OATMEAL, ROLLED AND FLAKED OATS, WHICH REMAIN UNBEATEN.

All are Manufactured from the CHOICEST BLENDS OF GRAIN that New Zealand Can Produce. We Manufacture Oatmeal, Rolled and Flaked Oats DAILY, so the public can rely on having a FRESH ARTICLE, and the "STANDARD" Brand is known by its FRESHNESS AND SWEETNESS. We also recommend our PATENT GERMINA, well adapted for this climate, and SEMOLINA AND WHEATMEAL. All our Goods are packed in sizes to suit the trade.

P. VIRTUE, Manager.

NORTHERN ROLLER MILLING COMPANY, LIMITED.

ELECTRIC, MAGNETIC, MASSAGE, AND CANCER INFIRMARY (Opposite St. Matthew's Church, Hobson Street, Auckland.)

DR. STANTON'S MAGIC OIL

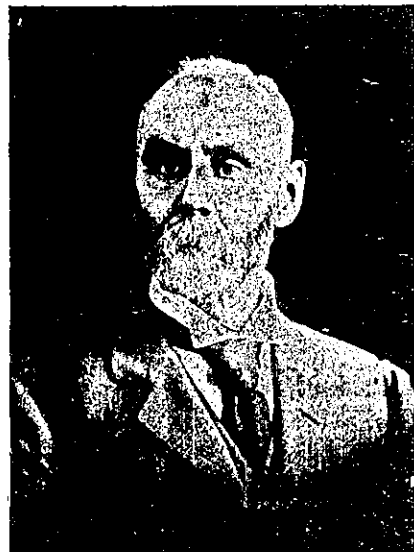
For Rheumatism, Sciatica, Neuralgia, Lumbago, Gout, and Insomnia

NEVER FAILS TO REMOVE PAIN INSTANTANEOUSLY

CURE PERMANENTLY

ONLY Obtainable at the above ADDRESS.

Pamphlets and Full Particulars Post Free on personal or written application. Letters requiring a reply must enclose a stamp.



DR STANTON, Cancer Specialist.

GEORGE PATERSON,

(Late of PATERSON BROS., HAWERA),

Has much pleasure in inviting your attention to the fact that he has bought the Business of R. S. THORBURN, Mercer & Clothier, (opposite the Metropolitan Hotel), and, by receiving constant supplies of the Newest and Best in Gentlemen's Apparel, hopes to secure a share of your patronage.

GEORGE PATERSON,

140 QUEEN STREET,

Opposite Metropolitan Hotel.

W. J. ATYEO.

EMPIRE HOTEL, CHRISTCHURCH.

AGENT.

Business Strictly Confidential.

Correspondence Promptly Attended to.

Bank References if Required.

No Reply, No Business.

HOTELS FOR SALE DWAN BROS.

WILLIS STREET, WELLINGTON. Established 1880.

Full Particulars Supplied to Bona Fide Purchasers Only.

FOR SALE, the Freehold of one of the best Hotels and Stores in the North Island. This Hotel is situated in the Gisborne district, which is now in a progressive and flourishing state. It is estimated that £10,000 will be spent yearly for the next 10 or 15 years in the immediate vicinity of the house, and most of the money must drift through this Hotel and Store, as there is no opposition. The business is a highly payable one; a good man should clear £1500 to £2000 yearly. Price for the freehold £6000. Furniture and stock at valuation. Large blocks of native lands are now being thrown open for sale near this property. Early application necessary. Owner selling through ill-health.

FIRST-CLASS HOTEL, South Island, doing flourishing and profitable business; situated in leading thoroughfare; a rare chance. This house is being offered for half its value. Trade £240 weekly; 46 hds beer drawn monthly. Price, £2200. DWAN BROS., Willis Street, Wellington.