

NEW ZEALAND HOTEL DIRECTORY—(CONTINUED). — PATRONISED BY HORSEMEN, CYCLISTS, MOTORISTS, SPORTSMEN, COMMERCIAL TRAVELLERS, AND THE THEATRICAL PROFESSION.

KAMO.

KAMO HOTEL, KAMO.

A. J. J. MEYER .. Proprietor.
Good Accommodation for Visitors and Travellers.
Best Brands of Wines and Spirits.
Good Stabling and First-class Pad-dock.

KIHIKIHI.

STAR HOTEL, KIHIKIHI.

Under New Management.
DANIEL COOPER .. Proprietor.
FIRST-CLASS ACCOMMODATION.
ONLY BEST BRANDS OF ALES,
WINES AND SPIRITS STOCKED.

KIMBOLTON.

POOLE'S FAMILY AND COMMERCIAL HOTEL, KIMBOLTON.

First-class Accommodation for Travellers.
W. S. POOLE Proprietor.

MARTON.

CLUB HOTEL, MARTON.

R. J. WALTERS Proprietor.
First-class Accommodation for Visitors and the Travelling Public.
Only the Best Brands of Ales, Wines and Spirits kept.
First-class Billiard Room.

RAILWAY HOTEL, MARTON JUNCTION (Right Opposite the Station).

All Trains stop ample time for Refreshments. All Wines and Spirits guaranteed. The very best Table kept.

ROBERT HUNT
(Late Duke of Edinburgh Hotel, Wellington).
Proprietor.

WHITE HART HOTEL, MARTON.

The Leading Family Commercial Hotel in the district. Lit throughout with Electric Light.
Well-lighted Sample Rooms. Hot and Cold Shower Baths.
Only the Best Brands of Wines and Spirits kept.
DAVID CORMACK Proprietor.

MARTON HOTEL, MARTON.

J. HANNAN Proprietor
(Late of Makutuku).
Begg to state he has recently taken over this popular House.

TARIFF MODERATE.

MERCER.

RAILWAY HOTEL, MERCER.

First-class Accommodation for Tourists and Travellers.
Wines and Spirits of the best brands only kept in stock.

F. GIMBLETT Proprietor.



THE NEW CALEDONIAN HOTEL,
Hastings Street, NAPIER.

Write or Wire for Rooms. Everything New and of the Best.
Promenade Roof.

A. G. BARNES, Proprietor.

MORRINSVILLE.

NOTTINGHAM CASTLE HOTEL, MORRINSVILLE.

(Five Minutes from Railway Station).

JAS. GANLEY Proprietor.

This Hotel has recently been renovated and many additions made.
First-class Accommodation for the Travelling Public. Meals at all hours.
Wines and Spirits of Best Brands only.

NAPIER.



CRITERION HOTEL, HASTINGS-ST., NAPIER.

An Up-to-date Hotel with every Modern Convenience.
New Commercial Sample Rooms.
PERCY MARTIN .. Manager
(Late Railway Hotel, Hastings).

ROYAL HOTEL, CARLYLE-STREET, NAPIER (Right opposite Recreation Ground).

GEO. H. GILDING Proprietor



EMPIRE HOTEL, NAPIER.

(Close to Post Office.)

Thirty-eight Bedrooms, Commercial Room, Sitting Rooms, Study, etc. Hot, Cold, and Shower Baths. Tam-o'-Shanter and Oban Whisky. Speights and Manning's Ales. Tariff, 5s. per day; 25s. per week.

JOHN BURRIDGE .. Proprietor.
(For 23 years manager of Hawke's Bay Club.)

SIMPSON'S CENTRAL HOTEL, EMERSON-STREET, NAPIER.

Now prepared to receive the Travelling Public. First-class Accommodation. Beer, Wine, and Spirits guaranteed of the best.

ALBION HOTEL, NAPIER.

H. CLAUDE FOX,
PROPRIETOR.

BREAKWATER HOTEL, MOTUROA, NEW PLYMOUTH.

Situated three minutes' walk from the Wharf. Only the best of Ales, Wines and Spirits kept. Excellent Accommodation and Good Fishing.
Telephone, 152.

TOMMY KNOWLES .. Proprietor.

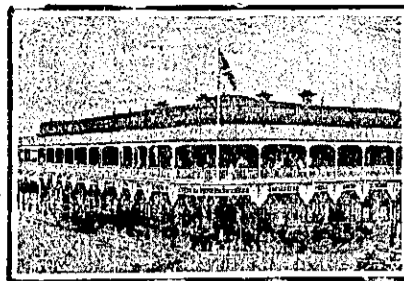
When in New Plymouth, Visit

OAKURA HOTEL

For all classes of FISHING AND SHOOTING. GOOD TABLE AND THE VERY BEST LIQUORS.

D. MCKINNON BAIN - - Proprietor.

NEW PLYMOUTH.



WHITE HART HOTEL, opposite Post and Telegraph Government Offices, NEW PLYMOUTH.

C. CLARKE Proprietor.
P.O. Box 30. Telephone 48

The above well-known Hostelry is the appointed house for the Commercial Travellers' Association. Only the best brands of Wines and Spirits. Speights, Duzedin Ale always on draught. First class Accommodation for Tourists, Travellers, and Families.

IMPERIAL HOTEL, NEW PLYMOUTH.

This well-known house of call is one of the most centrally situated hotels in New Plymouth, and one of the oldest established in the province. Its proximity to the railway station offers facility to the travelling public of being able to leave by the early morning trains. Guests may depend upon being called in time and obtaining breakfast before leaving. The bedrooms are well and comfortably furnished. Special attention has been paid to the fire-escapes.

Wines, Ales, and Spirits of First-class Quality only are kept in stock.

Correspondence promptly attended to.
Telephone No. 123.

TARIFF: 6s. 6d. per day. Arrangements by the week.

J. SMITH Proprietor.



Being centrally situated, is unequalled for Tourists and Commercial Gentlemen. The Table is maintained at a uniform standard of excellence, and visitors can be certain of obtaining the best Menu in New Plymouth. Hot and Cold Baths always available. Sanitary appointments are well up to date. Night Porter in attendance.

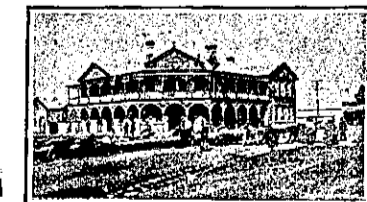
J. MCKEAN Proprietor.
P.O. Box 21. Telephone No. 30.

NGARUAWAHIA.



WAIPA HOTEL, NGARUAWAHIA

S. DRAFFIN, having taken over the ABOVE WELL-KNOWN HOTEL, wishes to remind his Friends and the General Public that he still maintains his reputation for keeping the very Best Brands of Ales and Spirits procurable. Train stops within a few yards of the Hotel, and Cleanliness, Comfort and Civility await all those who may favour him with a call.



DELTA HOTEL, NGARUAWAHIA.

B. A. SMITH Proprietor.

Visitors will receive every Attention at this Up-to-Date House.

ONLY THE FINEST BRANDS OF WINES AND SPIRITS STOCKED.

OHAUPO.

OHAUPO HOTEL, OHAUPO.

This Hotel is now under the Management of W. G. ABBOTT, late of N.Z. Railway Refreshment Rooms and Bar, Mercer.

Excellent Accommodation for Tourists and the Travelling Public.

Best Brands of Wines and Spirits kept in Stock.

OHAKUNE.



GRAND HOTEL, OHAKUNE.

SPECIALLY APPOINTED BY COOK'S TOURIST DEPARTMENT AND REFERENCED BY GOVERNMENT TOURIST DEPARTMENT.

The largest and most Commodious Hotel in Ohakune, the special feature being the large number of Single Bedrooms. Three Sitting-rooms. Commercial rooms, and Sample rooms. Hot and Cold Water Baths. Lighted throughout by Acetylene Gas. Night Porter kept. The Proprietor has Comfortable Coaches running to meet all Trains.

Telegrams: Grand, Ohakune

H. W. LITTLEWOOD .. Proprietor.

OPUNAKE.

BLACK'S OPUNAKE HOTEL.

THE RED HOUSE, OPUNAKE.

LANCELOT BLACK - - Proprietor.
Begg to notify Travellers and Residents of Opunake and surrounding district that he has now opened the above Hotel, and is prepared to receive Guests.

Dining-room under the supervision of an experienced Chef.

Every attention and civility.

NONE BUT THE BEST BRANDS OF ALES, WINES, AND SPIRITS STOCKED.

OTAKI.

THE TELEGRAPH HOTEL, OTAKI.

OTAKI.

JAS. WOODS Proprietor

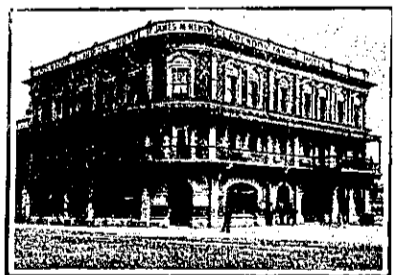
This New Hostelry is now open to the public, and the Proprietor will be pleased to greet old friends and new at the Hotel.

The whole of the Furniture, Fittings, etc., are absolutely New and Up-to-Date, and Customers may rely on receiving the best of attention, and most comfortable apartments at the Telegraph.

ALL LIQUORS OF THE BEST BRANDS.

JAMES WOODS.

PALMERSTON NORTH.



CLARENDON HOTEL, THE SQUARE, PALMERSTON NORTH.

(Under New Management)
J. MCKEWEN
(Late of Prince of Wales, Dunedin)
Proprietor.

Furnished with every convenience for Families and Travelling Public.
Best Brands of Liquors Stocked

MASONIC HOTEL (late Mullooney's).
Opposite Station,
PALMERSTON NORTH.

J. A. PAWSON, late of Hunterville and Marton, begs to inform the public that he has taken over this well-known House.

All Trains Stop Ample Time for Refreshments.

DUSTIN'S, LIMITED.

THE PREMIER CATERERS.

WANGANUI

and

PALMERSTON NORTH.

Show Catalogues, Trade Price Lists, Receipt Books, Billheads, Order Forms, Handbills, Invoices, Circulars, Large and Small Posters and Playbills, etc., etc.—ARTHUR CLEAVE AND CO., Ltd., Vulcan Lane