

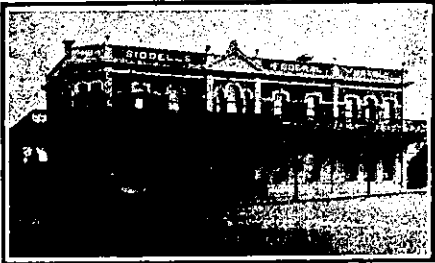
NEW ZEALAND HOTEL DIRECTORY—(CONTINUED). — PATRONISED BY HORSEMEN, CYCLISTS, MOTORISTS, SPORTSMEN, COMMERCIAL TRAVELLERS, AND THE THEATRICAL PROFESSION.

WANGANUI.

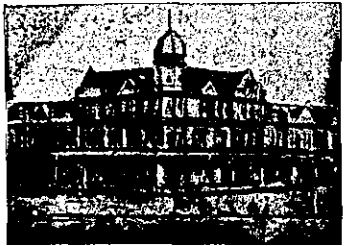


Established 1857..
Tel. No. 46. P.O. Box No. 54.
FITTED THROUGHOUT
WITH ELECTRIC LIGHT
FOSTER'S HOTEL,
Nearly opposite Town Bridge,
TAUPO QUAY, WANGANUI.
J. R. FOSTER, Proprietor.
Within Three Minutes of
Railway Station and River
Tourist Steamers.

FEDERAL HOTEL,
TAUPO QUAY, WANGANUI
(Opposite Up-river Steamer Wharves).



Modern, Brick, Fire-proof, Two-storeyed
building. Cosily furnished with all
home comforts. First-class Table and
Moderate Tariff.
The Best Brands of Ales, Stout and
Spirits always procurable.
NEW FEDERAL HOTEL, WANGANUI
overlooking Motua Gardens and Beauti-
ful View of the River.
Under New Management.
W. BELLVE Proprietor.

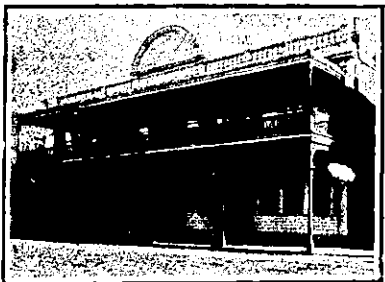


RUTLAND HOTEL, WANGANUI.
F. C. FABER Proprietor.
THE HOME OF THE TOURIST.

The above Hotel has just been rebuilt
and newly furnished throughout in an
up-to-date style. The reading, writ-
ing and smoke rooms are replete with
every convenience. The greatest care
is taken to maintain a reputation for
home comfort. Dark room for photo-
graphers.



PROVINCIAL HOTEL, WANGANUI.
FIRST-CLASS ACCOMMODATION
FOR THE TRAVELLING PUBLIC.
ONLY THE BEST OF ALES, WINES,
AND SPIRITS KEPT IN STOCK.
W. TUCK Proprietor.



MCCARTHY'S HOTEL,
WANGANUI.
IMMEDIATELY OPPOSITE RAILWAY
STATION AND WHARVES.
C. J. MCCARTHY - - Proprietor.
P.O. Box 136. Telephone 147.

WELLINGTON.

THE EMPIRE HOTEL,
(LIMITED).

THE LEADING & MOST CENTRAL
HOTEL IN WELLINGTON.

WELLINGTON.—Continued.



COLUMBIA PRIVATE HOTEL, Lower
Cuba-street, Wellington.
New and Up-to-Date, with very con-
venience. Night and Day Porter. Heat-
ers throughout bedrooms, Electric Ele-
vator, Magnificent Garden Roof com-
manding view of City and Harbour. Un-
rivalled for position, situated close to
places of amusement, railway station
and wharves. Trams pass the door.
Trains and Boats met, Tariff, 6s per
day. Permanent Boarders from 25s
weekly. LUNCHEON, 12—2. Tele-
phone 1126.
MRS. KEPPLER .. Proprietress.

FAMILY HOTEL, LOWER HUTT.
JOHN YOUNG .. Proprietor.

This Hotel offers Accommodation sec-
ond to none in the district. Central po-
sition and close to the Post Office.
Billiards, Excellent Table, and Best
Brands of Wines and Spirits. Only
Speight's Beer drawn.
Good Stabling and Commodious Loose
Boxes.



BARRETT'S HOTEL,
LAMBTON QUAY, WELLINGTON
(Op. Bank of New Zealand).
Newly Built in Brick. Over 70
Rooms. All Modern Conveniences. Close
to Wharf and Post Office. Excellent
Cuisine. Day and Night Porters. Tariff
7s per day, weekly by arrangement.
Letters and Telegrams receive prompt
attention. Phone 1076.
C. H. WILLIAMS Proprietor.



NEW OCCIDENTAL HOTEL,
LAMBTON QUAY, WELLINGTON.
J. H. FAIRBAIRN .. Proprietor.
UP TO DATE IN EVERY RESPECT.
ELECTRIC ELEVATOR.
DAY AND NIGHT PORTER.
Tariff, 8s Per Day. Garden Roof.
A Bottle Store adjoins the Hotel,
where a single bottle may be obtained at
wholesale price.
Best Brands of Wines, Spirits and
Ales. Telephone 91.

WELLINGTON.—Continued.

WHEN VISITING
WELLINGTON,
STAY AT
THE

ALBERT HOTEL
Which has recently been
re-furnished from cellar
to ceiling, and possesses
every modern convenience.
Letters and telegrams
will receive prompt attention.
T. G. ASHMAN, Proprietor.

VISITORS & TOURISTS

May rely upon having
**EXCELLENT
ACCOMMODATION**
And finding
everything
First-class
at the

BELLEVUE GARDENS & HOTEL
—AT—
**LOWER
HUTT.**
Half-hour Drive from
Trentham and One Hour
from Wellington.
Tariff, £2 2s. per Week.
E. J. ANSTIS - Proprietor.

MASONIC HOTEL,

CUBA STREET,
WELLINGTON.

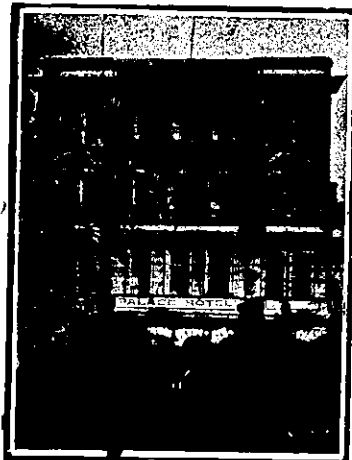
FREDK. DOBSON, PROPRIETOR.

TARIFF MODERATE.

DAY AND NIGHT PORTER KEPT.

CALL AND SEE FRED.

He will be delighted to see you.



THE PALACE HOTEL, WILLIS-
STREET.

Wellington's Most Comfortable Hos-
telry. Magnificently Furnished. Re-
plete with Every Modern Convenience.
Electric Light Throughout. Perfect
Cuisine. Now under the Management
of JAMES AITKEN. Communications
promptly replied to, Telephone 363.

THE
NEW COMMERCIAL HOTEL,

LAMBTON QUAY WELLINGTON.
Proprietor .. GEO. PINNOCK.
(Late Trocadero).

WINES AND SPIRITS ABOVE
REPROACH.

Wellington's Latest and most Up-to-
date Hostelry, very central. One min-
ute from Wharves and General Post
Office. House New, Furniture New,
Everything New. Passenger Lift. Every
Room Lit by Electricity. The Chef de
Cuisine is a first-class man, under spe-
cial contract to the management, and
Guests favouring this Hotel with their
patronage are assured the Bill of Fare
will be of the very Best. Tariff from 8s
per Day. Mid-day Lunch 12 to 2 p.m.,
1s 6d. Breakfast from 6.30 a.m. Motor
Cars for hire, experienced drivers,
charges reasonable, long or short jour-
neys.
House open to Guests from 6 a.m. to
Midnight.

DAY AND NIGHT PORTER.

CENTRAL HOTEL,

WELLINGTON.

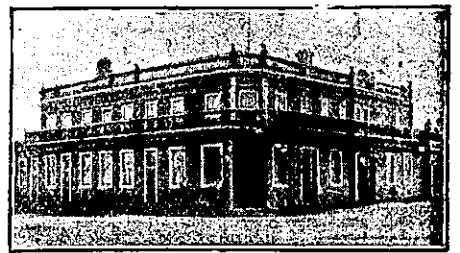
ALBERT (Bert) MACE .. Proprietor.
(Late of U.S.S. Coy).

ONLY BEST BRANDS OF WINES AND
SPIRITS IN STOCK.

DON'T FORGET TO LOOK UP "BERT"
WHEN VISITING WELLINGTON.

Printed and Published by Arthur Cleave, of Ellerslie, at his Registered Printing
Office, Vulcan Lane, Auckland, for the Proprietors, Arthur Cleave and Co.,
Ltd., THURSDAY, SEPTEMBER 23, 1909.

WESTPORT.



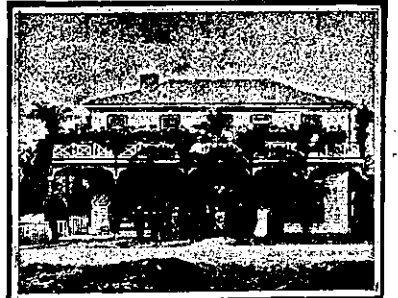
GRAND HOTEL

PALMERSTON-STREET

WESTPORT.

DAVID LEECH Proprietor.

WHANGAMOMONA.



WHANGAMOMONA HOTEL,
WHANGAMOMONA.
WM. ABBOTT, Proprietor. Every-
thing up to date. First-class Accom-
modation for Travellers and the General
Public. Only Best Brands of Wines
and Spirits kept in Stock.

WHANGAREI.



WHANGAREI HOTEL,
WHANGAREI.

This fine House, just re-built in brick
and furnished in up-to-date style, now
offers unrivalled Accommodation to the
Travelling Public.
Sample Room, Hot and Cold Baths.
Two minutes' walk from Saltwater
Bathing Place.
Stabling Second to None.
Best Wines, Ales and Spirits Kept in
Stock.
SAMUEL McMAHON Proprietor.

WOODVILLE.



CLUB HOTEL,

WOODVILLE.

P. DWYER Proprietor
(Late of Wellington and Dunedin).
The recognised house in the district
for Commercial Travellers. Sample
room attached to the hotel. Tourists
visiting Woodville will find excellent ac-
commodation at the above hotel. Good
fishing and shooting in and around the
district.

TELEPHONE No. 1. P.O. BOX 88.
LETTERS AND TELEGRAMS
PROMPTLY ATTENDED TO.
CABS LEAVE HOTEL TO MEET ALL
TRAINS.



CENTRAL HOTEL, WOODVILLE,
HAWKE'S BAY.

J. BOTTOMLEY .. Proprietor.

J.B. would remind all old friends and
the travelling public generally that he
is still conducting the above hotel. The
Central is suitably adapted for visitors
to Woodville on account of its central
position, and its prestige for Good Ac-
commodation and Quality of Liquors
and Ales is established.