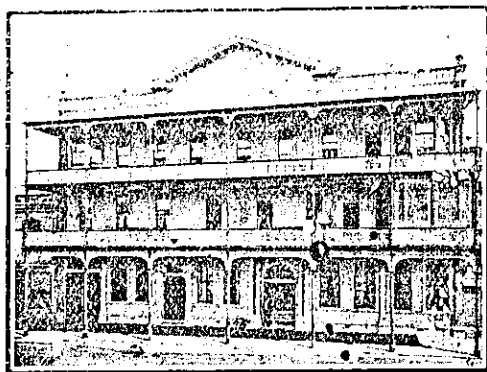


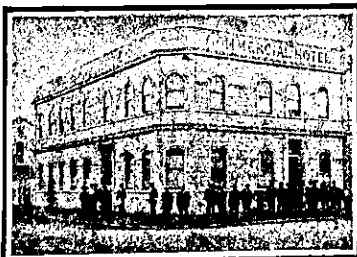
NEW ZEALAND HOTEL DIRECTORY—(CONTINUED). — PATRONISED BY HORSEMEN, CYCLISTS, MOTORISTS, SPORTSMEN, COMMERCIAL TRAVELLERS, AND THE THEATRICAL PROFESSION.

WANGANUI.

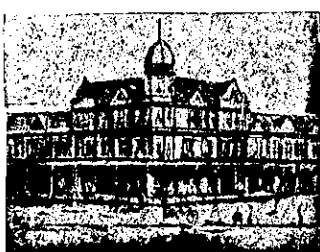


Established 1857.
Tel. No. 46. P.O. Box No. 54.
FITTED THROUGHOUT
WITH ELECTRIC LIGHT
FOSTER'S HOTEL,
Nearly opposite Town Bridge,
TAUPO QUAY, WANGANUI.
J. R. FOSTER, Proprietor.
Within Three Minutes of
Railway Station and River
Tourist Steamers.

COMMERCIAL HOTEL, WANGANUI



MR. H. J. TYRRELL (late of Bull and formerly with U.S.S. Co.), has taken over the above Hotel, and the Public may rely on receiving a hearty welcome and every comfort from Mr. Tyrrell.
Best Wines, Spirits, and Cigars kept in stock.
ONLY SPEIGHT'S ALE ON DRAUGHT.
Letters and Telegrams promptly attended to.
Telephone 269.



RUTLAND HOTEL, WANGANUI.
F. C. FABER Proprietor.
THE HOME OF THE TOURIST.

The above Hotel has just been rebuilt and newly furnished throughout in an up-to-date style. The reading, writing and smoke rooms are replete with every convenience. The greatest care is taken to maintain a reputation for home comfort. Dark room for photographers.

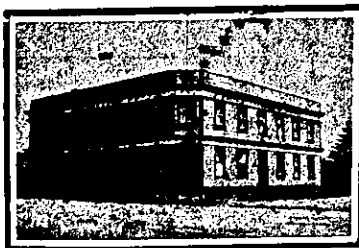
THE PARKVILLE PRIVATE HOTEL,
RIDGWAY STREET,
WANGANUI.
Near Main Entrance to Cook's Gardens.
NEW AND UP-TO-DATE.

Specially adapted for the Convenience and Comfort of the Travelling Public. Beautiful Healthy Locality. One minute's walk from Railway Station and Post Office.
Hot and Cold Baths.
Commercial and Sitting Rooms, also Writing Room for use of Patrons.
J. HODSON, Proprietor.
Telephone 505.
Telegrams and Correspondence attended to.



PROVINCIAL HOTEL, WANGANUI.
FIRST-CLASS ACCOMMODATION FOR THE TRAVELLING PUBLIC.
ONLY THE BEST OF ALES, WINES, AND SPIRITS KEPT IN STOCK.
W. TUCK Proprietor.

WAVERLEY.



COMMERCIAL HOTEL, WAVERLEY.
The recognised House for Commercial and Tourists.
Patrons will receive all Home Comforts.
Letters and Telegrams promptly attended to.
Speight's Dunedin Beer on Tap.
JAMES SMITH Proprietor.
(Late Manager Pritchett and Co., Wellington).

For Mutual Advantage, please mention this paper when communicating.

WELLINGTON.

NEW PROVINCIAL HOTEL,
UPPER HUTT.

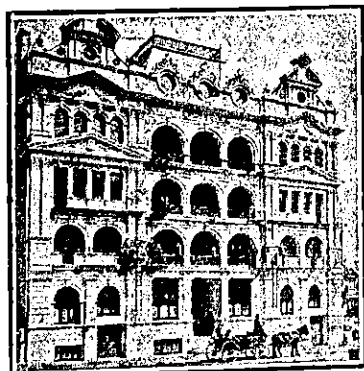
CONTAINING OVER FIFTY ROOMS.
Replete with Every Modern Convenience.
FIRST-CLASS ACCOMMODATION FOR TOURISTS, TRAVELLERS, ETC.
Trout-Fishing Streams Within Short Distance of Hotel.
FIRST-CLASS LOOSE BOXES.
ATTACHED TO THE PREMISES.
CHAS. N. WILLIAMS,
Proprietor.

THE EMPIRE HOTEL,
(LIMITED).

THE LEADING & MOST CENTRAL
HOTEL IN WELLINGTON.



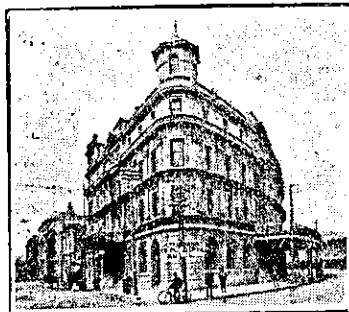
BARRETT'S HOTEL, LAMBTON QUAY, WELLINGTON (Op. Bank of New Zealand).
Newly Built in Brick. Over 70 Rooms. All Modern Conveniences. Close to Wharf and Post Office. Excellent Table. Day and Night Porters. Tariff 7s per day, weekly by arrangement. Letters and Telegrams receive prompt attention. Phone 1076.
A. M. GOW Proprietor.



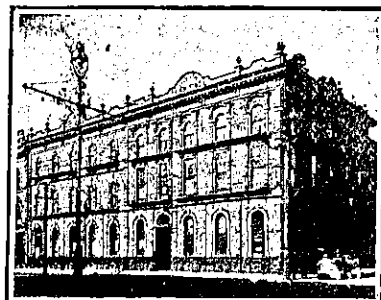
HOTEL ARCADIA, WELLINGTON.
Most Up-to-date Private Hotel in the Colonies. Smoking Rooms, Writing Rooms, Drawing Rooms and Lounge. Beautiful Roof Garden, reached by electric lift.
JOHN PATERSON Proprietor
(Over 20 Years with U.S.S. Co.)

WELLINGTON.—Continued.

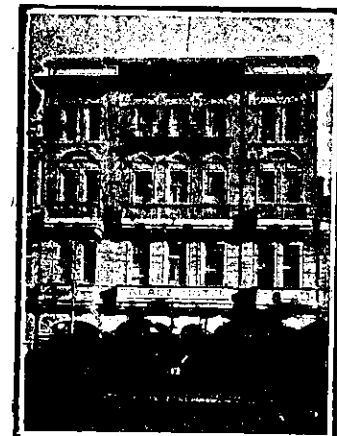
WHEN VISITING WELLINGTON, STAY AT THE **ALBERT HOTEL**
Which has recently been re-furnished from cellar to ceiling, and possesses every modern convenience. Letters and telegrams will receive prompt attention.
T. G. ASHMAN, Proprietor.



NEW OCCIDENTAL HOTEL,
LAMBTON QUAY, WELLINGTON.
J. H. FAIRBAIRN .. Proprietor.
UP TO DATE IN EVERY RESPECT.
ELECTRIC ELEVATOR.
DAY AND NIGHT PORTER.
Tariff, 8s Per Day. Garden Roof.
A Bottle Store adjoins the Hotel, where a single bottle may be obtained at wholesale price.
Best Brands of Wines, Spirits and ales. Telephone 91.



CLUB HOTEL,
LAMBTON QUAY, WELLINGTON.
PROPRIETOR: E. WILSON
(Late of Post Office Hotel).
The Favourite Hotel for Country Gentlemen, Tourists and Travellers.
Good Table and very Best Wines and Spirits.
SPEIGHT'S BEER ON TAP.
Letters and Telegrams promptly attended to.
Night Porter in Attendance.



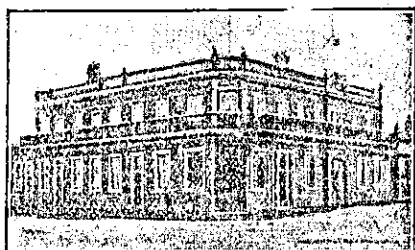
THE PALACE HOTEL, WILLIS-STREET.
Wellington's Most Comfortable Hostelry. Magnificently Furnished. Replete with Every Modern Convenience. Electric Light Throughout. Perfect Cuisine. Now under the Management of JAMES AITKEN. Communications promptly replied to. Telephone 852.

THE NEW COMMERCIAL HOTEL,
LAMBTON QUAY WELLINGTON.
Proprietor .. GEO. PINNOCK.
(Late Trocadero).

WINES AND SPIRITS ABOVE REPROACH.
Wellington's Latest and most Up-to-date Hostelry, very central. One minute from Wharves and General Post Office. House New. Furniture New. Everything New. Passenger Lift. Every Room Lit by Electricity. The Chef de Cuisine is a first-class man, under special contract to the management, and Guests favouring this Hotel with their patronage are assured the Bill of Fare will be of the very Best. Tariff from 8s per Day. Mid-day Lunch 12 to 2 p.m. 1s 6d. Breakfast from 6.30 a.m. Motor Cars for hire, experienced drivers, charges reasonable, long or short journeys.
House open to Guests from 6 a.m. to Midnight.
DAY AND NIGHT PORTER.

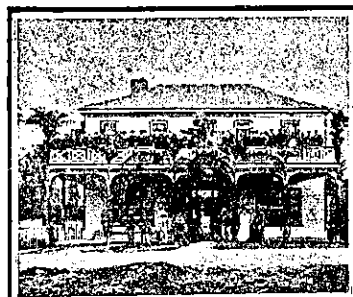
Printed and Published by Arthur Cleave, of Ellerslie, at his Registered Printing Office, Vulcan Lane, Auckland, for the Proprietors, Arthur Cleave and Co.

WESTPORT.



GRAND HOTEL
PALMERSTON-STREET
WESTPORT.
DAVID LEECH Proprietor.

WHANGAMOANA.



WHANGAMOMONA HOTEL,
WHANGAMOMONA.
WM. ABBOTT, Proprietor. Everything up to date. First-class Accommodation for Travellers and the General Public. Only Best Brands of Wines and Spirits kept in Stock.

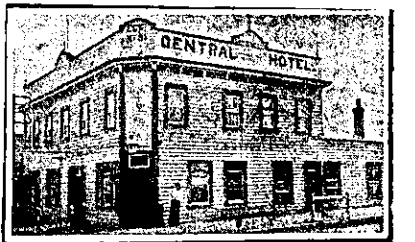
WHANGAREI.



WHANGAREI HOTEL,
WHANGAREI.
This fine House, just re-built in brick and furnished in up-to-date style, now offers unrivalled Accommodation to the Travelling Public.
Sample Room. Hot and Cold Baths.
Two minutes' walk from Saltwater Bathing Place.
Stabling Second to None.
Best Wines, Ales and Spirits Kept in Stock.
SAMUEL McMAHON Proprietor.

WOODVILLE.

LAING'S MASONIC HOTEL,
WOODVILLE.
Excellent Accommodation for the Travelling Public at a Moderate Tariff. Best Wines, Spirits, Ales, etc. Good Billiard Table.
Ample Stabling and Paddockings.
ANDREW LAING (Late of Foxton) Proprietor.



CENTRAL HOTEL, WOODVILLE,
HAWKE'S BAY.
J. BOTTOMLEY .. Proprietor.

J.B. would remind all old friends and the travelling public generally that he is still conducting the above hotel. The Central is suitably adapted for visitors to Woodville on account of its central position, and its prestige for Good Accommodation and Quality of Liquors and Ales is established.

McGAVIN'S DUNEDIN PRIZE ALES AND STOUT IN BULK AND BOTTLE. SOLD IN THE PRINCIPAL HOTELS THROUGHOUT THE DOMINION.