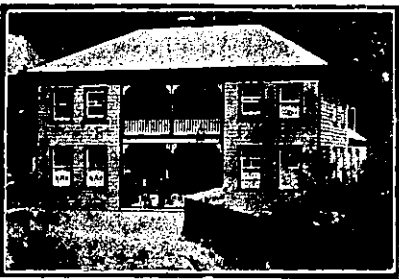


NEW ZEALAND HOTEL DIRECTORY—(CONTINUED). — PATRONISED BY HORSEMEN, CYCLISTS, MOTORISTS, SPORTSMEN, COMMERCIAL TRAVELLERS AND THE THEATRICAL PROFESSION.

KAMO.

KAMO HOTEL, KAMO.
A. J. MEYER .. Proprietor.
Good Accommodation for Visitors and Travellers.
Best Brands of Wines and Spirits.
Good Stabling and First-class Pad-dock.

KARANGAHAKE.

TRAMWAY HOTEL, KARANGAHAKE (Across the Bridge).

This is a New and Up-to-date Hotel, having recently been re-erected. First-class Ales and Spirits. Hot and Cold Baths and Every Convenience.

MRS. K. CROSBY,
Proprietress.



KARANGAHAKE HOTEL,
MAIN-ST., KARANGAHAKE.

Centrally situated. Coaches stop at the door. Dining-room capable of accommodating 90. Speight's Dunedin Ales, also Campbell-Ehrenfried's. Central Hall for Concerts, etc., is the largest in the town. Hotel and Hall lighted by Acetylene Gas. Spacious and well-lighted rooms.

G. INGLIS Proprietor.

KIKIKIHI.

STAR HOTEL, KIKIKIHI.

Under New Management.
DANIEL COOPER .. Proprietor.

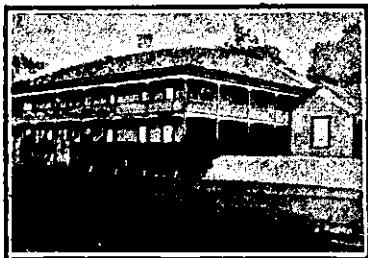
FIRST-CLASS ACCOMMODATION.

ONLY BEST BRANDS OF ALES,
WINES AND SPIRITS STOCKED.

MACKAYTOWN.

MACKAYTOWN HOTEL,
MACKAYTOWN.

J. QUINN Proprietor.
First Class Accommodation for the Travelling Public.
Best Brands Wine and Spirits only in Stock.

MANGONUI.

THE MANGONUI HOTEL, MANGONUI.

THOS. WEBB Proprietor.

T.W. begs to inform the Settlers of the North generally, and all Visitors to Mangonui, that he has taken over the New and Commodious Hostelry, near the Wharf, and trusts by strict attention to Business and Civility, to meet all demands. A GOOD TABLE KEPT. None but the best of LIQUORS, BEERS, etc., kept in stock, and on Draught.

MARTON.

CLUB HOTEL, MARTON.

R. J. WALTERS Proprietor.

First-class Accommodation for Visitors and the Travelling Public.
Only the Best Brands of Ales, Wines and Spirits kept.
First-class Billiard Room.

RAILWAY HOTEL,
MARTON JUNCTION
(Right Opposite the Station.)

All Trains stop ample time for Refreshments. All Wines and Spirits guaranteed. The very best Table kept.

ROBERT HUNT
(Late Duke of Edinburgh Hotel, Wellington),
Proprietor.

MARTON.—Continued.

WHITE HART HOTEL, MARTON.

The Leading Family Commercial Hotel in the district. Lit throughout with Electric Light.
Well-lighted Sample Rooms. Hot and Cold Shower Baths.
Only the Best Brands of Wines and Spirits kept.
DAVID CORMACK Proprietor.

MARTON HOTEL, MARTON.

J. HANNAN Proprietor
(Late of Makutuku).
Begs to state he has recently taken over this popular House.

TARIFF MODERATE.

MASTERTON.

CENTRAL HOTEL, MASTERTON.

MR. F. S. COOPER, late of the Empire Hotel, Hawera, and formerly of Wellington, wishes to inform the public of Auckland and surrounding districts that he has taken over the above well-known house. This hotel offers superior accommodation to travellers, and is a first-class family residence in every respect. The rooms are well ventilated, lofty, and comfortably furnished, and at a reasonable charge. Superior Billiard Table. Good Table. Telegrams and letters will receive prompt attention.
F. S. COOPER .. Proprietor.

CLUB HOTEL, QUEEN-STREET,
MASTERTON.

Patronised by His Excellency The Earl of Ranfurly.

Now under the Management of
TOM PORTER,
(Late Manager Royal Oak Hotel, Wellington).

Having made arrangements for the use of Sample Rooms, which are adjacent to the Club, Travellers can rely on being accommodated by wiring for Sample Rooms. Nothing but Staples and Co.'s Beer sold.

TOM PORTER Proprietor.

MERCER.

RAILWAY HOTEL, MERCER.

First-class Accommodation for Tourists and Travellers.
Wines and Spirits of the best brands only kept in stock.

F. GIMBLETT Proprietor.

MORRINSVILLE.

NOTTINGHAM CASTLE HOTEL,
MORRINSVILLE.

(Five Minutes from Railway Station).

JAS. GANLEY Proprietor.

This Hotel has recently been renovated and many additions made.
First-class Accommodation for the Travelling Public. Meals at all hours.
Wines and Spirits of Best Brands only.

NAPIER.

CRITERION HOTEL,
HASTINGS-ST., NAPIER.

An Up-to-date Hotel with every Modern Convenience.
New Commercial Sample Rooms.

PERCY MARTIN .. Manager
(Late Railway Hotel, Hastings).

WANTED—
TENANT

for First-class Wellington City Hotel.

Rent, £20. Trade, £180 week.
Ingoing, £2650.

Ill-health of licensee cause of sale.

We will advance £1325.

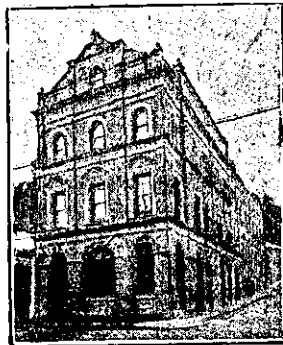
DWAN BROTHERS,
WELLINGTON.

NAPIER.—Continued.

ROYAL HOTEL,

CARLYLE-STREET, NAPIER
(Right opposite Recreation Ground).

GEO. H. GILDING Proprietor.



EMPIRE HOTEL, NAPIER,

(Close to Post Office).

28 Bedrooms, Commercial Room, Sitting Rooms, Study, etc. Hot, Cold, and Shower Baths. Tam-o'-Shanter and Oban Whisky. Speight's and Manning's Ales. Tariff, 5s per Jay; 25s per week.

JOHN BURRIDGE Proprietor.
(For 12 years manager of Hawke's Bay Club).

SIMPSON'S

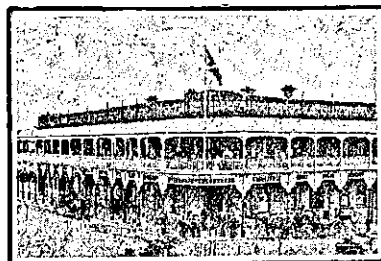
CENTRAL HOTEL,
EMERSON-STREET, NAPIER.

Now prepared to receive the Travelling Public. First-class Accommodation. Beer, Wine, and Spirits guaranteed of the best.

ALBION HOTEL,

NAPIER.

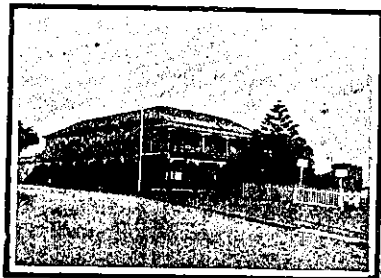
H. CLAUDE FOX,
PROPRIETOR.

NEW PLYMOUTH.

WHITE HART HOTEL, opposite
Post and Telegraph Government
Offices, NEW PLYMOUTH.

C. CLARKE Proprietor.
P.O. Box 30. Telephone 48.

The above well-known Hostelry is the appointed house for the Commercial Travellers' Association. Only the best brands of Wines and Spirits. Speight's Dunedin Ale always on draught. First-class Accommodation for Tourists, Travellers, and Families.



TERMINUS HOTEL,
NEW PLYMOUTH.

The above Hotel is situated on the Beach, opposite Railway Station, and one minute from Post Office. Beautiful gardens attached to hotel overlooking the sea, and guests may rely on receiving the very best attention.
Best Brands of Wines and Spirits kept. Speight's Dunedin Beer on tap.

TERMINUS HOTEL COMPANY, LTD.
F. FOSTER, Manager.

BREAKWATER HOTEL,
MOTUROA, NEW PLYMOUTH.

Situated three minutes' walk from the Wharf. Only the best of Ales, Wines and Spirits kept. Excellent Accommodation and Good Fishing.
Telephone, 152.

TOMMY KNOWLES .. Proprietor.

NGARUAWAHIA.

WAIPA HOTEL, NGARUAWAHIA.

S. DRAFFIN, having taken over the ABOVE WELL-KNOWN HOTEL,

Wishes to remind his Friends and the General Public that he still maintains his reputation for keeping the very Best Brands of Ales and Spirits procurable. Train stops within a few yards of the Hotel, and Cleanliness, Comfort, and Civility await all those who may favour him with a call.

OTAKI.

THE TELEGRAPH HOTEL,

OTAKI.

JAS. WOODS Proprietor.

This New Hostelry is now open to the public, and the Proprietor will be pleased to greet old friends and new at the Hotel.

The whole of the Furniture, Fittings, etc., are absolutely New and Up-to-Date, and Customers may rely on receiving the best of attention, and most comfortable apartments at the Telegraph.

ALL LIQUORS OF THE BEST BRANDS.

JAMES WOODS.

PAEROA.

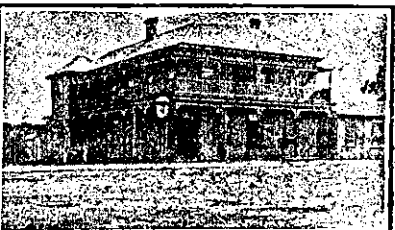
PAEROA HOTEL, PAEROA.
Directly opposite Railway Station and Nearest Hotel to Steamers to and from Auckland.

This New and Commodious Hotel is replete with every Modern Convenience for the Travelling Public.

FIRST-CLASS CUISINE.
Hot, Cold, and Shower Baths.
Terms moderate.

E. F. MORIARTY

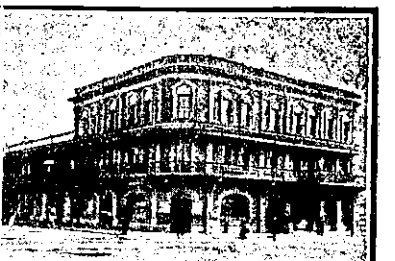
(Late of Northern Wairoa), Proprietor.



COMMERCIAL HOTEL, PAEROA.

J. H. MOORE Proprietor.

First-class Accommodation for Travellers and Tourists. Cheapest Rates in the district, 4s 6d per day, and Cuisine cannot be surpassed. Wines and Spirits of the Best Brands only kept in Stock. Coaches pass the door for all surrounding districts.

PALMERSTON NORTH.

CLARENDON HOTEL,
THE SQUARE, PALMERSTON NORTH.

(Under New Management).

J. McKEWEN
(Late of Prince of Wales, Dunedin)
Proprietor.

Furnished with every convenience for Families and Travelling Public.
Best Brands of Liquors Stocked.

CAFE OF PARIS HOTEL, PALMERSTON NORTH.

MRS. J. ADAMS Proprietress.
(Late of Marquis of Normanby Hotel, Carterton).

Opposite Railway Station. Travellers may rely on catching early trains.
Speight's Beer.