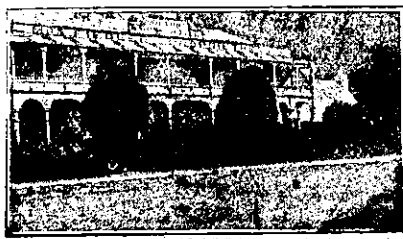


NEW ZEALAND HOTEL DIRECTORY—(CONTINUED). — PATRONISED BY HORSEMEN, CYCLISTS, MOTORISTS, SPORTSMEN, COMMERCIAL TRAVELLERS AND THE THEATRICAL PROFESSION.

CHRISTCHURCH.—Continued.



MARINE HOTEL, SUMNER.

An Ideal Holiday Resort, offering excellent Accommodation for the Travelling Public.

BEST BRANDS OF WINES AND SPIRITS. HOT, COLD, AND SHOWER BATHS. BILLIARD TABLE.

JAS. HATFIELD Proprietor.

Where to Stay in Christchurch?

STOREY'S FAMILY HOTEL

(Late Termias).

Right Opposite Railway Station.

Convenient to all parts of city and suburbs, as Electric Cars start from the door.

Excellent Cuisine.

Tariff on application.

WM. JAMES Proprietor.

Do You Want Accommodation?

Then Interview CHARLIE L. STARK. (Late of Gore, Oamaru, and Waimate).

CAVERSHAM HOTEL

Corner HIGH AND MADRAS STS. CHRISTCHURCH.

Where he will supply you with a Good Bed and the Best of Meals, for 4s 6d per day. Ask your Cabman to drive you to the CAVERSHAM. Manning's Celebrated Ales.

GROSVENOR HOTEL, corner Moorhouse Avenue and Madras Street, CHRISTCHURCH.

One Minute from the Railway Station and Trams.

JOHN JACKSON Proprietor (Late of Governor's Bay).

This house has been thoroughly renovated, and visitors will find every comfort and convenience, combined with civility and attention. Only the best Wines and Spirits in Stock.

DARGAVILLE.



NORTHERN WAIROA HOTEL, DARGAVILLE.

EVERY POSSIBLE CONVENIENCE FOR THE TRAVELLING PUBLIC.

The BILLIARD ROOM is fitted with one of Alcock's Best Tables. Good Stables and Paddock adjoining the premises.

F. C. BASS Proprietor.

DRURY.



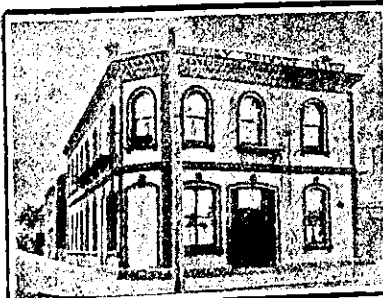
RAILWAY HOTEL, DRURY.

This Hotel is within easy distance from town, being only 22 miles by rail direct. There is splendid Shooting in the district.

First-class Table. Moderate Tariff. Special arrangements for week-end parties.

MRS. H. DINGLE .. Proprietress.

DUNEDIN.



RAILWAY PRIVATE HOTEL,

Corner CASTLE AND ST. ANDREW STS., DUNEDIN. (Two Minutes from Railway Station.)

TARIFF, 4s PER DAY. Weekly by Arrangement.

J. BAIRD Proprietor.

DUNEDIN.—Continued.

BOWLING GREEN HOTEL.

Corner of Frederick and Cumberland streets, DUNEDIN.

W. D. Wyatt, late of Wellington, begs to inform his Friends and Country Visitors that he has taken the above well-known Hotel, which has been thoroughly Renovated and Refurnished, and is now in a position to offer his Patrons First-class Accommodation.

TERMS MODERATE. NOTED HOUSE FOR BEST WINES AND SPIRITS.

SOUTHERN HOTEL, PRINCES-STREET, DUNEDIN.

H. T. ANDREWS .. Proprietor. (Late of Wolsey Hotel, Winchester).

Splendid accommodation for Visitors. Only the very Best Wines and Spirits Stocked.

GLADSTONE HOTEL, MACLAGGAN-STREET, DUNEDIN.

JOHN COLLINS Proprietor. (Late of Al Hotel, Pelichet Bay).

The most Centrally-situated Hotel in the City. First-class Accommodation for Tourists Travellers, and Boarders. Suites of rooms for Families. Charges Moderate. A Special Feature: 1s Lunch from 12 to 2 o'clock. Hot, Cold, and Shower Baths. The Very Best of Wines, Ales, and Spirits supplied.

CRITERION HOTEL, PRINCES STREET, DUNEDIN.

First-class Accommodation for Boarders and Travelling Public. Prompt attention to Letters and Telegrams. Night and Day Porter kept.

SPEIGHT'S ALES ON DRAUGHT. Telephone 211. P.O. Box 431.

JAMES MURPHY .. Proprietor.

ELTHAM.



CHARLES POTTS

Is still running the

CENTRAL HOTEL

(late Branch Hotel),

BRIDGE AND HIGH STREETS, ELTHAM.

Hot Lunch daily at 12.0 noon.

Tariff, 6s. 6d. per day.

Everything new and up to date.

FEATHERSTON.

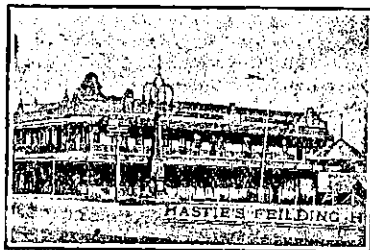
EMPIRE HOTEL, FEATHERSTON.

The EMPIRE is the appointed Hotel to the Wellington Commercial Travellers' Association and N.Z. Cyclists' Touring Club.

JOHN H. TULLY Proprietor.

FEILDING.

WHEN VISITING FEILDING, DON'T FORGET Harry Parker AT THE **EMPIRE HOTEL** EXCELLENT ACCOMMODATION for Travellers and Tourists. LETTERS AND WIRES PROMPTLY ATTENDED TO.



HASTIE'S FEILDING HOTEL,

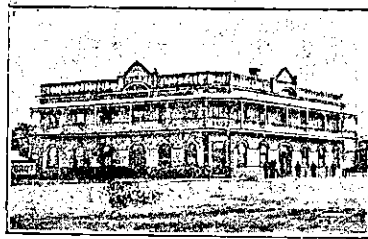
MANCHESTER SQUARE,

FEILDING.

THE LEADING HOTEL IN THE DISTRICT.

E. KENNEDY .. Proprietress.

GISBORNE.



TURANGANUI HOTEL,

WHARF, GISBORNE.

JAMES WALLACE .. Proprietor.

SPEIGHT'S XXX ALE ON DRAUGHT. Wines and Spirits of Best Brands. First-class Billiard Table.



MASONIC HOTEL, GISBORNE.

T. H. HALL Proprietor.

Travellers and the General Public will receive every attention and good Accommodation.

Wines and Spirits of the Best Brands only Stocked.

HAWERA.

CENTRAL HOTEL.

THE WELL-KNOWN HOUSE IN HAWERA FOR TRAVELLERS AND TOURISTS.

EVERYTHING OF THE BEST.

B. HARRINGTON, Proprietor.

HAMILTON.



COMMERCIAL HOTEL, HAMILTON.

DAVID NORDEN Proprietor.

The Travelling Public specially Catered for.

TERMS MODERATE.

Telephone No. 12.

FRANKTON HOTEL

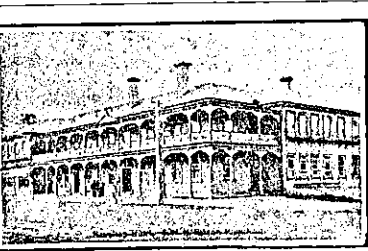
(Opposite Station).

D. HOLLAND Proprietor.

Best Brands Wines and Spirits Kept

Hancock's XXX Ales.

First-class Accommodation for Tourists and the General Public.



HAMILTON HOTEL, HAMILTON.

J. B. HOOPER Proprietor.

This Commodious and Up-to-date Hotel is replete with every modern convenience for the Comfort of Visitors.

The Cuisine is first-class. Tariff Moderate.

ONLY THE BEST OF LIQUORS KEPT ON STOCK.

PAEROA BREWERY CO., LTD.

BREWERS, BOTTLERS, WINE AND SPIRIT MERCHANTS.

Victoria Brewery, PAEROA, Telephone 30.

Victoria Bottling Stores: KENNY-STREET, WAIKATO. Tel. 39.

Pure Beer, brewed only from Finest Malt and Hops.

Invalid Stout a specialty.

All kinds of Wines and Spirits in Stock.

HAMILTON.—Continued.

UNDER NEW MANAGEMENT.



WESTCOURT, HAMILTON

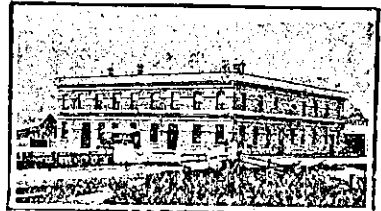
(Opposite Railway Station).

PRIVATE BOARD AND RESIDENCE.

TARIFF: 4s 6d PER DAY.

D. McVICAR Proprietor.

HELENVILLE.



TERMINUS HOTEL, HELENVILLE.

J. A. McLEOD Proprietor.

It is most conveniently situated to the Helensville main railway station and wharves. Bus runs twice daily from Hotel to Hot Springs.

A good Billiard Table, Sample, and Committee Rooms.

STABLING.

HOKIANGA.



KOHUKOHU HOTEL, KOHUKOHU, HOKIANGA.

THE PRINCIPAL TOWNSHIP IN THE NORTH.

Every Accommodation in this New, Clean, and Tidy Hostelry. All Liquors of the very best. Billiards, Stables, Good Meals. Charges in all Departments—Moderate.

JOHN NICHOLSON .. Proprietor.

HOKITIKA.

COMMERCIAL HOTEL, REVELL STREET, HOKITIKA.

THOS. PALMER .. Proprietor. (Late Cameron's Hotel).

This Hotel is situated next to Cameron's Stables, and has been renovated throughout, and has every convenience for Travellers, Tourists, and the General Public. Hot and Cold Water Baths.

Visitors will receive a hearty welcome. Only the Very Best of Wines, Spirits, and Ales kept. Board and Lodging, Moderate Charge; permanent Boarders by arrangement.

KELLER'S HOTEL, HOKITIKA.

Patronised by the Leading Commercial men on the West Coast. Only the best brands, etc., supplied.

W. KELLER Proprietor.

Under Vice-regal Patronage.

HUKERENUI.

HUKERENUI HOTEL, HUKERENUI.

THE TERMINUS OF THE RAILWAY.

Having secured the Freehold of the above convenient Hotel, the Proprietress is now making extensive and permanent alterations, so as to comfortably accommodate the Travelling Public who use it. Free House, and Liquors of the Best. A Good Table kept, and Charges Moderate.

M. E. KEATLEY Proprietress.

HUNTERVILLE.

HUNTERVILLE HOTEL, HUNTERVILLE.

E. D. HAMMOND Proprietor

The Proprietor wishes to intimate that he has just taken over the above premises. This Hotel offers superior Accommodation to Travellers. Good Table. Best of Wines, Ales, etc. Terms: 4s 6d per day.

HUNTLY.

HUNTLY HOTEL, HUNTLY

L. B. HARRIS Proprietor.

This Hotel is now one of the largest in the Waikato. All trains stop at Huntly, and the Hotel is a few yards from the Station. First-class Accommodation and Excellent Table.