

**NEW ZEALAND HOTEL DIRECTORY—(CONTINUED). — PATRONISED BY HORSEMEN, CYCLISTS, MOTORISTS, SPORTSMEN, COMMERCIAL TRAVELLERS AND THE THEATRICAL PROFESSION.**

**AUCKLAND.—Continued.**

**NAVAL AND FAMILY HOTEL,**  
Corner of Pitt-street and Karanga-hape Road,  
**AUCKLAND.**  
RAYNES BROTHERS, Proprietors.

**LEN ADAMS,**  
**ROYAL OAK HOTEL,**  
ONE-TREE HILL,  
ONEHUNGA.



**CRITERION HOTEL, OTAHUHU.**  
Good Accommodation for the Travelling Public.  
Replete with every Modern Convenience.  
Only the Best Brands of Wines, Ales, Spirits, etc., kept on Stock.  
J. M. FRASER ..... Proprietor.



**ST. HELIER'S BAY HOTEL,**  
Sea-bathing and Fishing. Within one hour's drive of Auckland. Special Terms offered to Week-end Visitors. Telephone. Catering for Dinners or Suppers, Club or Private, guaranteed. Afternoon Tea supplied to driving or boating parties. Perfect Service. Most Moderate Charges.  
W. H. G. WRATHALL,  
Proprietor and Licensee.



**HARP OF ERIN HOTEL,**  
ELLERSLIE.  
MRS. WRIGHT ... Proprietress.  
The Proprietress begs to intimate that the new house, which has been erected according to the most modern designs and is replete with all the latest improvements is now open for the Accommodation of the Public. The stock of Liquors, etc., has been selected with care, and will be found to be of the very best. Excellent Stabling. Loose Boxes, etc.

**PRINCE OF WALES' HOTEL,**  
HOBSON-ST., AUCKLAND.  
H. S. BOOKER ..... Proprietor.  
(Late of Lake Hotel Takapuna).  
Every home comfort for visitors. Billiards, Billiards.  
Campbell and Ehrenfried's XXXX Prize Ale on Draught. The best brands of Wines and Spirits.

**QUEEN'S FERRY HOTEL,**  
VULCAN LANE,  
AUCKLAND.

**T. MARKWICK**  
Begs to notify that he has taken over the above favourite Hostelry.

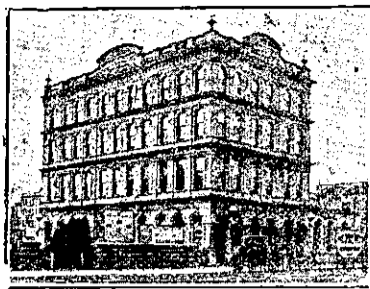
His trade principle is to keep nothing but the very best, and to aim at the comfort of his Patrons.

**ALBERT HOTEL,**  
QUEEN-STREET, AUCKLAND.

**COMMERCIAL AND FAMILY HOTEL**  
AND TOURISTS' RESORT.

**BEST WINES AND SPIRITS.**  
PERCY J. DELANEY,  
Proprietor.

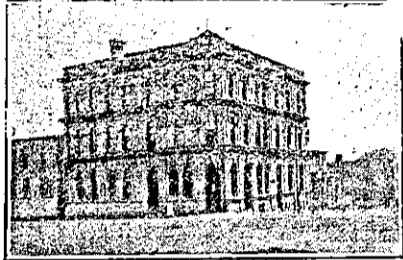
**AUCKLAND.—Continued.**



**WAVERLEY HOTEL,**  
QUEEN-STREET, AUCKLAND.

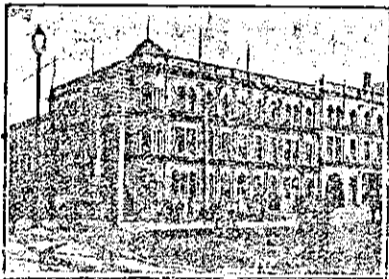
Near Railway Station, Tram Terminus the Wharf, and Bus Stands.  
First-class Table d'Hote. Conveyance meets Steamers and Trains.  
Tariff: 7s per day; £2 2s per week.  
Telephone 370.  
This Hotel has a beautiful view of the Harbour.

MAURICE O'CONNOR ..... Proprietor



**CITY HOTEL,** Corner of VICTORIA & HOBSON STS., AUCKLAND.

WALTER STIMPSON  
(Late of the Queen's Ferry).  
Will be glad to welcome Old and New Friends at the above Popular House.  
The Wines, Spirits, Ales and Cuisine will be found to be unexceptionable, while the Accommodation is thoroughly modern.



**WAITEMATA HOTEL,** Cor. QUEEN & CUSTOM STS., AUCKLAND.  
Close to the Wharf and Railway Station.

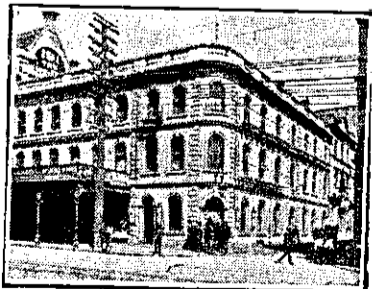
VISITORS WILL FIND EVERY COMFORT AND CONVENIENCE.

JOHN ENDEAN ..... Proprietor.  
Telephone 589.



**ROYAL GEORGE HOTEL,**  
NEWMARET.

P. FARQUHAR .. Proprietor  
Buses and Trams pass the Door every Three Minutes.  
BEST BRANDS OF WINES AND SPIRITS KEPT.  
Terms Moderate



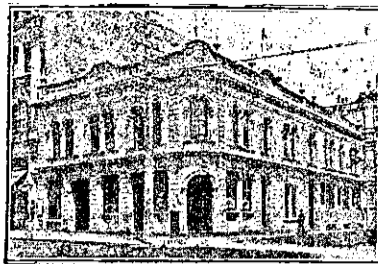
**BRITISH HOTEL,** CORNER OF DURHAM AND QUEEN STREETS.

J. H. PAGNI (late Western and Oriental Hotels, Wellington), begs to invite all his friends and general public to inspect the new improvements at the above Hotel, which is now the most comfortable and up-to-date in Auckland. Visitors will find first-class accommodation. Nothing but the Best and Most Reliable Brands of Spirits, Wines, and Beer and Stout kept in stock. New Saloon Bar now open.

**THE EDINBURGH CASTLE HOTEL,**  
UPPER SYMONDS STREET,  
AUCKLAND.

YOU CAN'T MISS IT—END OF PENNY SECTION.  
J. S. PALMER ..... Proprietor.

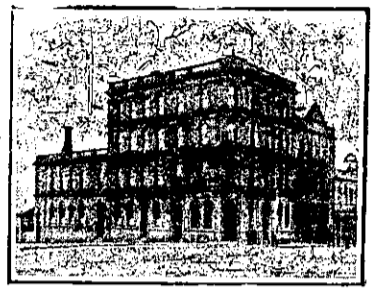
**AUCKLAND.—Continued.**



**THISTLE HOTEL,**  
QUEEN-STREET, AUCKLAND.

MR. BOB NOTON has now taken over the Management of the above Hotel, which has been thoroughly Renovated throughout.  
A Few Doors above the City Chambers.

BOB NOTON ..... Proprietor.

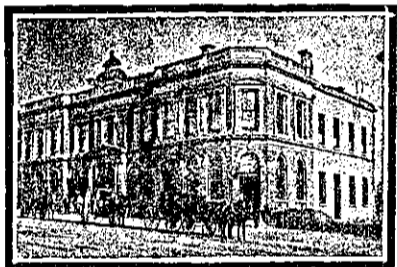


**ALBION HOTEL,**  
(Corner Wellesley and Hobson sts, Auckland.)

MURRAY MOLLOY ..... Proprietor.

One of the Largest and Handiest Hotels in the City.

FIRST-CLASS BILLIARD TABLE.  
Trams pass the door every few minutes



**GROSVENOR HOTEL,**

(Five minutes' walk from Post Office.)  
HOBSON STREET, AUCKLAND, N.Z.  
JOSEPH ROBINSON ..... Proprietor.  
Every Modern Comfort and Convenience for Tourists, Travellers and Families. First-Class Billiard Table, Wines and Spirits of the Best Brands Only.  
Terms Moderate. Telephone 1153

**AWANUI.**

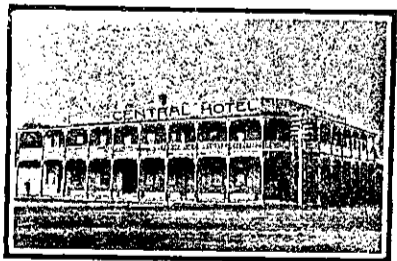
**AWANUI HOTEL,**

NEIL McLEOD .... Proprietor.

FIRST-CLASS ACCOMMODATION.

ONLY THE BEST OF LIQUORS STOCKED.

**CAMBRIDGE.**

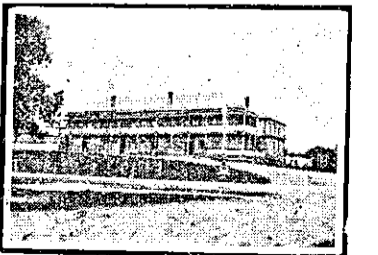


**CENTRAL HOTEL,** CAMBRIDGE.

A. UNDERWOOD .. Proprietor.

First-class Accommodation for the Travelling Public.  
Only the Best Brands of Ales, Wines and Spirits kept.

TERMS MODERATE.

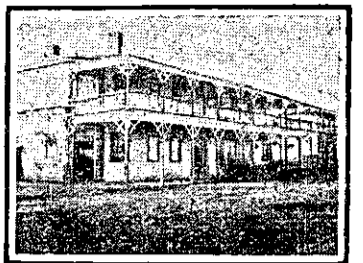


**NATIONAL HOTEL,** CAMBRIDGE

The Best Appointed and Most Charming Situation Hotel in the district. Excellent Cuisine. First-class Billiard Table. Good Stable. First-class Sample Rooms.

J. WATTERS ..... Proprietor.

**CAMBRIDGE.—Continued.**



**MASONIC HOTEL,** CAMBRIDGE.

E. W. SMITH  
(Late of Oxford Hotel, Tirau).  
Only Best Brands of Ales and Spirits kept.  
Excellent Table.  
Every Convenience for Tourists, Travellers and Families.  
Hot and Cold Baths.  
Terms Moderate.

**CHRISTCHURCH.**

**DOMINION HOTEL**

Gloucester St., Christchurch  
(Opposite New Theatre Royal).

The Hotel has been thoroughly Renovated and Restored

Lighted throughout with Electricity.

*Entirely under New Management.  
Complete New Staff of Assistants.*

Night Porter in attendance.

Tariff Moderate.  
Special Tariff for Theatricals.  
Letters and Telegrams promptly attended to.

**E. E. DANIELS,**

(Late Manager Warner's Ltd.).

PROPRIETOR

**STAR AND GARTER HOTEL,**  
CHRISTCHURCH.

Corner Barbadoes-street and Oxford Terrace.

PAUL B. FLOOD ... Proprietor.

Everything First-class, and Ales, Wines and Spirits are of the Highest Order.

**THE GLADSTONE HOTEL,**  
Off Papanui Road, CHRISTCHURCH.

AN UP-TO-DATE HOUSE.

Excellent Accommodation. Liquors of Special Quality and Great Variety. Manning's Ales on Draught.

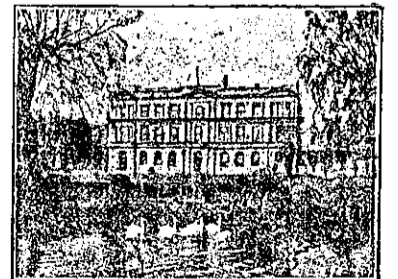
H. PIPER ..... Proprietor.



**LYTTELTON HOTEL,** LYTTELTON.

(Under new management). The above Hotel has been renovated throughout, and now offers Accommodation second to none in Lyttelton. Cuisine under the personal supervision of Mrs. Hartshorn. Hot and Cold Water Baths. Best Brands of Ales, Wines, and Spirits. Excellent Billiard Table.  
Tariff Moderate.

Wm. HARTSHORN, Proprietor.



**THE NEW CLARENDON HOTEL,**  
CHRISTCHURCH.

CORNER OF OXFORD TERRACE AND WORCESTER-STREET  
(One Minute's Walk from General Post Office).

Recently Re-built. Superior Accommodation for Tourists and Travellers. All Modern Conveniences. Splendidly Situated.

D. COLLINS .. Proprietor.

**D. J. KELLEHER**

(Late British Hotel, Lyttelton).

Desires to acquaint his friends that he has now taken over the ROTHERFIELD HOTEL, Christchurch, which is absolutely a Free House, with good Accommodation and the Comforts of a Home. Large Balcony facing main street. Best Ales, Wines and Spirits.