

**NEW ZEALAND HOTEL DIRECTORY—(CONTINUED). — PATRONISED BY HORSEMEN, CYCLISTS, MOTORISTS, SPORTSMEN, COMMERCIAL TRAVELLERS AND THE THEATRICAL PROFESSION.**

**KARANGAHAKE**



**TRAMWAY HOTEL, KARANGAHAKE** (Across the Bridge).

This is a New and Up-to-date Hotel, having recently been re-erected. First-class Ales and Spirits. Hot and Cold Baths and Every Convenience.

MRS. K. CROSBY, Proprietress.



**KARANGAHAKE HOTEL, MAIN-ST., KARANGAHAKE.**

Centrally situated. Coaches stop at the door. Dining-room capable of accommodating 90. Speight's Dunedin Ales, also Campbell-Ehrenfried's. Central Hall for Concerts, etc., is the largest in the town. Hotel and Hall lighted by Acetylene Gas. Spacious and well-lighted rooms.

G. INGLIS ..... Proprietor.

**KIHIKIHI**

**STAR HOTEL, KIHIKIHI.**

FREDERICK HENWOOD .. Proprietor  
FIRST-CLASS ACCOMMODATION.

ONLY BEST BRANDS OF ALES, WINES AND SPIRITS STOCKED.

**MACKAYTOWN.**

**MACKAYTOWN HOTEL, MACKAYTOWN.**

J. QUINN ..... Proprietor  
First Class Accommodation for the Travelling Public.  
Best Brands Wine and Spirits only in Stock.

**MANGONUI.**



**THE MANGONUI HOTEL, MANGONUI.**

THOS. WEBB ..... Proprietor.

T.W. begs to inform the Settlers of the North generally, and all Visitors to Mangonui, that he has taken over the New and Commodious Hostelry, near the Wharf, and trusts by strict attention to Business and Civility, to meet all demands. A GOOD TABLE KEPT. None but the best of Liquors, Beers, etc., kept in stock, and on Draught.

**KAITAIA HOTEL, KAITAIA, MANGONUI.**

C. F. MOLLOY (Brother of Jos. Molloy, Albion Hotel, Hobson-street, Auckland), Proprietor of the above old and well-established Hostelry, begs to inform the Travelling Public that every Accommodation is now afforded. Stables, Paddock, and Plenty of Feed for Horses and Owner. The Best of Wines, Spirits and Beers.

**MARTON.**

**CLUB HOTEL, MARTON.**

R. J. WALTERS ..... Proprietor.

First-class Accommodation for Visitors and the Travelling Public. Only the Best Brands of Ales, Wines and Spirits kept. First-class Billiard Room.

**RAILWAY HOTEL, MARTON JUNCTION** (Right Opposite the Station).

All Trains stop ample time for Refreshments. All Wines and Spirits guaranteed. The very best Table kept.

ROBERT HUNT (Late Duke of Edinburgh Hotel, Wellington), Proprietor.

**MARTON.—Continued.**

**MARTON HOTEL, MARTON.**

J. A. PAWSON ..... Proprietor. Mr. Pawson begs to intimate that he has taken over the above Hotel, and the travelling public can rely on First-class Accommodation at a moderate tariff. Only the Best of Ales, Wines, and Spirits kept. Tariff: 4s 6d per Day.

**MASTERTON.**



**CENTRAL HOTEL, MASTERTON**

MR. F. S. COOPER, late of the Empire Hotel, Hawera, and formerly of Wellington, wishes to inform the public of Auckland and surrounding districts that he has taken over the above well-known house. This hotel offers superior accommodation to travellers, and is a first-class family residence in every respect. The rooms are well ventilated, lofty, and comfortably furnished, and at a reasonable charge. Superior Billiard Table. Good Table. Telegrams and letters will receive prompt attention.

F. S. COOPER .. Proprietor.

**CLUB HOTEL, QUEEN-STREET, MASTERTON.**

Patronised by His Excellency The Earl of Ranfurly.

Now under the Management of TOM PORTER, (Late Manager Royal Oak Hotel, Wellington).

Having made arrangements for the use of Sample Rooms, which are adjacent to the Club, Travellers can rely on being accommodated by wiring for Sample Rooms. Nothing but Staples and Co's Beer sold.

TOM PORTER ..... Proprietor.

**MERCER.**

**RAILWAY HOTEL, MERCER.**

First-class Accommodation for Tourists and Travellers. Wines and Spirits of the best brands only kept in stock.

M. GALLERY ..... Proprietor.

**MORRINSVILLE.**

**NOTTINGHAM CASTLE HOTEL, MORRINSVILLE.**

(Five Minutes from Railway Station).

JAS. GANLEY .... Proprietor.

This Hotel has recently been renovated and many additions made. First-class Accommodation for the Travelling Public. Meals at all hours. Wines and Spirits of Best Brands only.

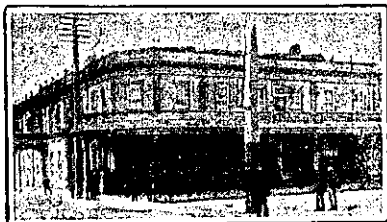
**NAPIER.**

**FUSZARD'S FERNHILL HOTEL.**

MIDWAY BETWEEN NAPIER AND HASTINGS.

EVERY ATTENTION TO THE TRAVELLING PUBLIC. EVERYTHING OF THE BEST.

WINTER FUSZARD .. Proprietor.



**CRITERION HOTEL, HASTINGS-ST., NAPIER.**

An Up-to-date Hotel with every Modern Convenience. New Commercial Sample Rooms. PERCY MARTIN .. Manager (Late Railway Hotel, Hastings).

**HOTELS FOR SALE.**

**DWAN BROS.,**

**HOTEL BROKERS, VALUERS, AND FINANCIERS,**

WILLIS STREET, WELLINGTON (Established 1880).  
HOTEL—Rent, £2 15s. Price, £750  
HOTEL—Rent, £5 8s; trade, £80 to £90. Price, £2200. HOTEL (Manawatu)—Rent, £4. Price, £2250. HOTEL (Wellington)—Five years' lease. Price, £5500. BRICK HOTEL (Wellington)—Trade over £200 weekly. Elegantly furnished. HOTEL (Wairarapa)—Trade about £130 weekly. Price, £2500. HOTEL (Rangitikei)—Rent, £4. Price, £2200. HOTEL (Wairarapa)—Seven years' lease. Price, £3000. HOTEL (Christchurch)—Price, £1500. HOTEL (Wairarapa)—Price, £1800.

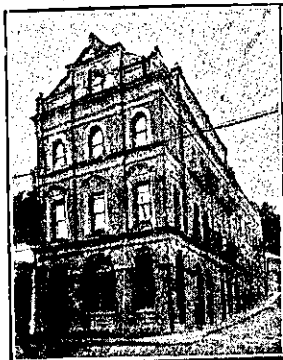
**DWAN BROS.**

**NAPIER.—Continued.**

**ROYAL HOTEL,**

CARLYLE-STREET, NAPIER (Right opposite Recreation Ground).

JEO. H. GILDING ..... Proprietor.



**EMPIRE HOTEL, NAPIER.**

(Close to Post Office).

38 Bedrooms, Commercial Room, Sitting Rooms, Study, etc. Hot, Cold and Shower Baths. Tam-o-Shanter and Oban Whisky. Speight's and Manning's Ales. Tariff, 5s per Day; 25s per week.

JOHN BURRIDGE ..... Proprietor. For 23 years manager of Hawke's bay Club.

**SIMPSON'S**

**CENTRAL HOTEL, EMERSON-STREET, NAPIER.**

Now prepared to receive the Travelling Public. First-class Accommodation. Beer, Wine, and Spirits guaranteed of the best.

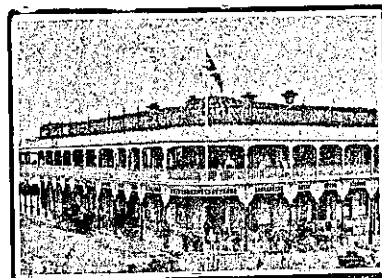
**NELSON.**

**MASONIC HOTEL, NELSON** CHANGE OF OWNERSHIP.

This long-established Hotel, which has always been the headquarters in Nelson for Tourists and Commercial Travellers, has recently been purchased by Mr. H. Baker.

The Hotel has been thoroughly renovated, and all the Rooms are being refitted in modern style. No effort will be spared to make all visitors thoroughly comfortable.

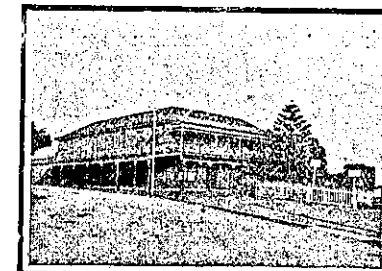
**NEW PLYMOUTH.**



**WHITE HART HOTEL, opposite Post and Telegraph Government Offices, NEW PLYMOUTH.**

C. CLARKE ..... Proprietor. P.O. Box 30. Telephone 48.

The above well-known Hostelry is the appointed house for the Commercial Travellers' Association. Only the best brands of Wines and Spirits. Speight's Dunedin Ale always on draught. First-class Accommodation for Tourists, Travellers, and Families.



**TERMINUS HOTEL, NEW PLYMOUTH.**

The above Hotel is situated on the Beach, opposite Railway Station, and one minute from Post Office. Beautiful gardens attached to hotel overlooking the sea, and guests may rely on receiving the very best attention. Best Brands of Wines and Spirits kept. Speight's Dunedin Beer on tap.

TERMINUS HOTEL COMPANY, LTD. F. FOSTER, Manager.

**BREAKWATER HOTEL, MOTUROA, NEW PLYMOUTH.**

Situated three minutes' walk from the Wharf. Only the best of Ales, Wines and Spirits kept. Excellent Accommodation and Good Fishing. Telephone, 152.

TOMMY KNOWLES .. Proprietor.

**NGARUAWAHIA.**



**WAIPA HOTEL, NGARUAWAHIA.**

S. DRAFFIN, having taken over the S. ABOVE WELL-KNOWN HOTEL, wishes to remind his Friends and the General Public that he still maintains his reputation for keeping the very Best Brands of Ales and Spirits procurable. Train stops within a few yards of the Hotel, and Cleanliness, Comfort, and Civility await all those who may favour him with a call.

**OTAKI.**

**THE TELEGRAPH HOTEL, OTAKI.**

JAS. WOODS ..... Proprietor.

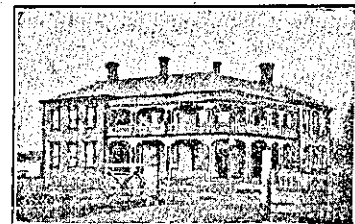
This New Hostelry is now open to the public, and the Proprietor will be pleased to greet old friends and new at the Hotel.

The whole of the Furniture, Fittings, etc., are absolutely New and Up-to-Date, and Customers may rely on receiving the best of attention, and most comfortable apartments at the Telegraph.

ALL LIQUORS OF THE BEST BRANDS.

JAMES WOODS.

**PAEROA.**



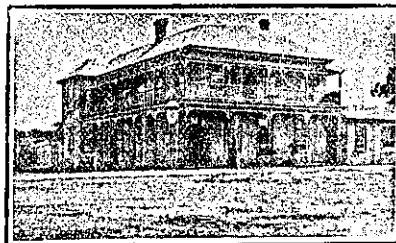
**PAEROA HOTEL, PAEROA.** (Directly opposite Railway Station and Nearest Hotel to Steamers to and from Auckland.)

This New and Commodious Hotel is replete with every Modern Convenience for the Travelling Public.

FIRST-CLASS CUISINE. Hot, Cold, and Shower Baths. Terms moderate.

E. F. MORIARTY

(Late of Northern Wairoa), Proprietor.

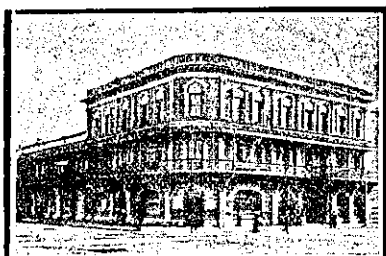


**COMMERCIAL HOTEL, PAEROA.**

J. H. MOORE ..... Proprietor.

First-class Accommodation for Travellers and Tourists. Cheapest Rates in the district, 4s 6d per day, and Cuisine cannot be surpassed. Wines and Spirits of the Best Brands only kept in Stock. Coaches pass the door for all surrounding districts.

**PALMERSTON NORTH.**



**CLARENDON HOTEL, THE SQUARE, PALMERSTON NORTH.** (Under New Management) J. MCKEWEAN, Proprietor.

(Late of Prince of Wales, Dunedin) Proprietor. Furnished with every convenience for Families and Travelling Public. Best Brands of Liquors Stocked.

**CAFE OF PARIS HOTEL, PALMERSTON NORTH.**

MRS. J. ADAMS ..... Proprietress. (Late of Marquis of Normanby Hotel, Carterton).

Opposite Railway Station. Travellers may rely on catching early trains. Speight's Beer.