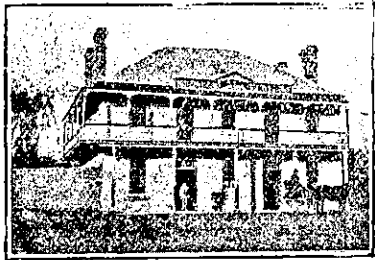


NEW ZEALAND HOTEL DIRECTORY—(CONTINUED). — PATRONISED BY HORSEMEN, CYCLISTS, MOTORISTS, SPORTSMEN, COMMERCIAL TRAVELLERS AND THE THEATRICAL PROFESSION.

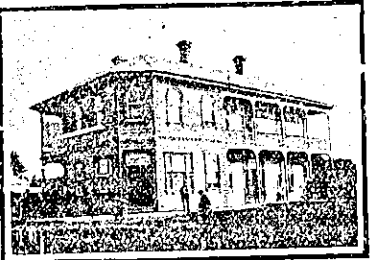
AUCKLAND.—Continued.

NAVAL AND FAMILY HOTEL, Corner of Pitt-street and Karangahape Road, AUCKLAND. T. W. WATTS ... Proprietor.

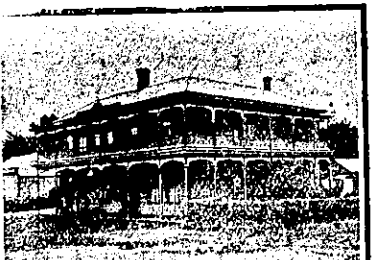
LEN ADAMS, ROYAL OAK HOTEL, ONE-TREE HILL, ONEHUNGA.



JUNCTION HOTEL, EPSOM. Buses and trams pass here on their way to and from Ellerslie Racecourse and Alexandra Park Football Ground. WINES, SPIRITS AND BEERS—BEST ONLY. Give me a Call— J. COTTERALL ... Proprietor.



ST. HELIER'S BAY HOTEL. Sea-bathing and Fishing. Within one hour's drive of Auckland. Special Terms Offered to Week-end Visitors. Telephone. Catering for Dinners or Suppers. Club or Private, guaranteed. Afternoon Tea supplied to driving or boating parties. Perfect Service. Most Moderate Charges. W. H. G. WRATHALL, Proprietor and Licensee.



HARP OF BRIN HOTEL, ELLERSLIE. MRS. WRIGHT ... Proprietress.

The Proprietress begs to intimate that the new house, which has been erected according to the most modern designs, and is replete with all the latest improvements, is now open for the Accommodation of the Public. The stock of Liquors, etc., has been selected with care, and will be found to be of the very best. Excellent Stabling, Loose Boxes, etc.

PRINCE OF WALES' HOTEL, HOBSON-ST., AUCKLAND. H. S. BOOKER ... Proprietor (Late of Lake Hotel, Takapuna). Every home comfort for visitors. Billiards, Billiards, Campbell and Ehrenfried's XXXX Prize Ale on draught. The best brands of Wines and Spirits.

QUEEN'S FERRY HOTEL, VULCAN LANE, AUCKLAND.

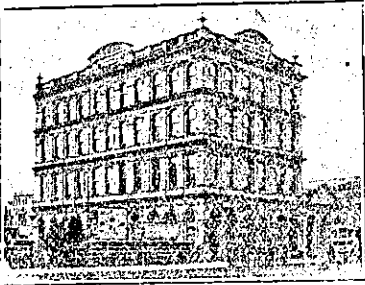
T. MARKWICK. Begs to notify that he has taken over the above favourite Hostelry. His trade principle is to keep nothing but the very best, and to aim at the comfort of his Patrons.

ALBERT HOTEL, QUEEN-STREET, AUCKLAND.

COMMERCIAL AND FAMILY HOTEL AND TOURISTS' RESORT.

BEST WINES AND SPIRITS. PERCY J. DELANEY, Proprietor.

AUCKLAND.—Continued.

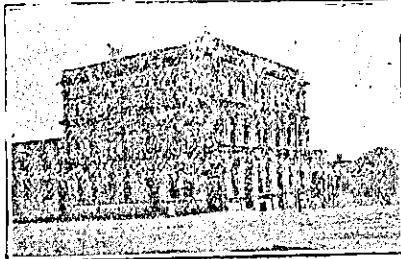


WAVERLEY HOTEL, QUEEN-STREET, AUCKLAND.

Near Railway Station, Tram Terminus, the Wharf, and Bus Stands. First-class Table d'Hote. Conveyance meets Steamers and Trains. Tariff: 7s per day; £2 2s per week. Telephone 370. This Hotel has a beautiful view of the Harbour.

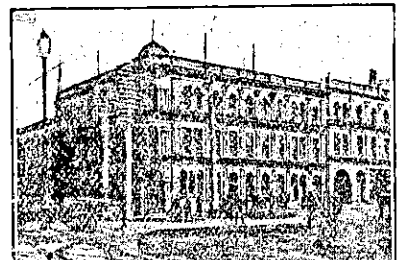
MAURICE O'CONNOR ... Proprietor. RISING SUN HOTEL, KARANGAHAPE ROAD.

J. McKEANE, so long and favourably known at Panmure in connection with hotel-keeping, wishes to announce that he has taken over the Rising Sun Hotel, Karangahape Road, where he hopes to see all his old and new friends who may pass his way. Superior Accommodation for Boarders. Telephone 1717.



CITY HOTEL, Corner of VICTORIA & HOBSON STS., AUCKLAND.

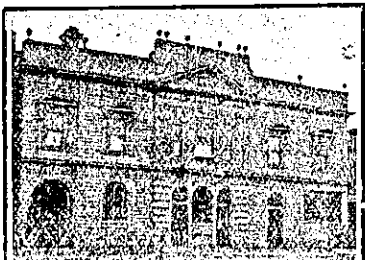
WALTER STIMPSON (Late of the Queen's Ferry), will be glad to welcome Old and New Friends at the above Popular House. The Wines, Spirits, Ales and Cuisine will be found to be unexceptionable, while the Accommodation is thoroughly modern.



WAITEMATA HOTEL, Cor. QUEEN & CUSTOM STS., Auckland. Close to the Wharf and Railway Station.

VISITORS WILL FIND EVERY COMFORT AND CONVENIENCE.

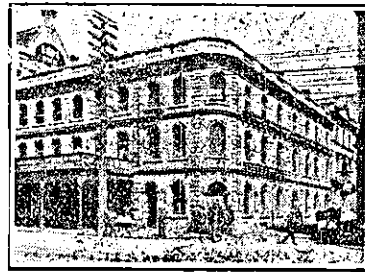
JOHN ENDEAN ... Proprietor. Telephone 589.



ROYAL GEORGE HOTEL, NEWMARET. P. FARQUHAR ... Proprietor.

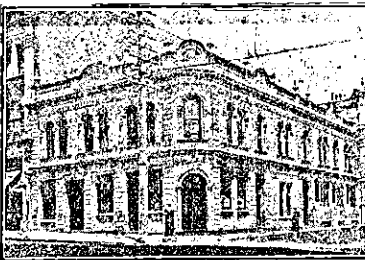
Buses and Trams pass the Door every Three Minutes. BEST BRANDS OF WINES AND SPIRITS KEPT. Terms Moderate.

(Established 1868.) I. M. & J. MOWBRAY STOCK AND SHAREBROKERS, HOUSE, LAND, & ESTATE AGENTS, HOTEL BROKERS & VALUATORS. 22, SHORTLAND STREET (New "Star" Office.)



BRITISH HOTEL, CORNER OF DURHAM AND QUEEN STREETS.

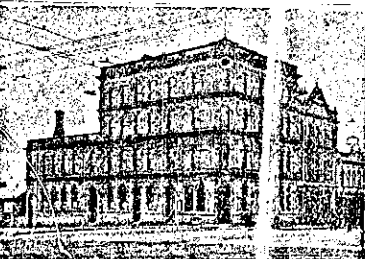
J. H. PAGNI (late Western and Oriental Hotels, Wellington), begs to invite all his friends and general public to inspect the new improvements at the above Hotel, which is now the most comfortable and up-to-date in Auckland. Visitors will find first-class accommodation. Nothing but the Best and Most Reliable Brands of Spirits, Wines, and Beer and Stout kept in stock. New Saloon Bar now open.



THISTLE HOTEL, QUEEN-STREET, AUCKLAND.

MR. BOB NOTON has now taken over the Management of the above Hotel, which has been thoroughly Renovated throughout. A Few Doors above the City Chambers.

BOB NOTON ... Proprietor.

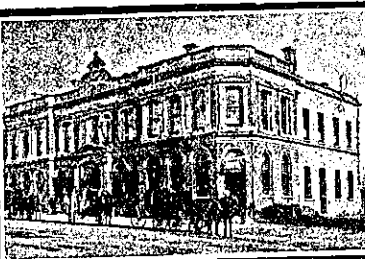


ALBION HOTEL, (Corner Wellesley and Hobson sts, Auckland.)

MURRAY MOLLOY ... Proprietor.

One of the Largest and Handiest Hotels in the City.

FIRST-CLASS BILLIARD TABLE. Trams pass the door every few minutes.



GROSVENOR HOTEL.

(Five minutes' walk from Post Office.) HOBSON STREET, AUCKLAND, N.Z. JOSEPH ROBINSON ... Proprietor. Every Modern Comfort and Convenience for Tourists, Travellers and Families. First-Class Billiard Table. Wines and Spirits of the Best Brands Only. Terms Moderate. Telephone 1153.

AWANUI.

AWANUI HOTEL.

NEIL McLEOD ... Proprietor. FIRST-CLASS ACCOMMODATION. ONLY THE BEST OF LIQUORS STOCKED.

CAMBRIDGE.



CENTRAL HOTEL, CAMBRIDGE.

A. UNDERWOOD ... Proprietor. First-class Accommodation for the Travelling Public. Only the Best Brands of Ales, Wines and Spirits kept. TERMS MODERATE.

CHRISTCHURCH.

DOMINION HOTEL

Gloucester St., Christchurch (Opposite New Theatre Royal).

The Hotel has been thoroughly Renovated and Restored.

Lighted throughout with Electricity.

Entirely under New Management. Complete New Staff of Assistants.

Night Porter in attendance.

Tariff Moderate. Special Tariff for Theatricals. Letters and Telegrams promptly attended to.

E. E. DANIELS.

(Late Manager: Warner's, Ltd.)

PROPRIETOR

STAR AND GARTER HOTEL, CHRISTCHURCH.

Corner Barbadoes-street and Oxford Terrace.

PAUL B. FLOOD ... Proprietor.

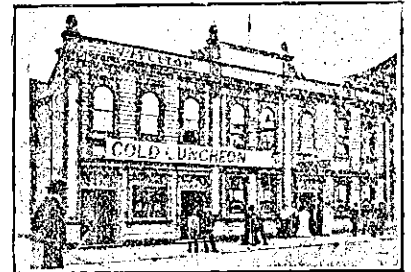
Everything First-class, and Ales, Wines and Spirits are of the Highest Order.

THE GLADSTONE HOTEL.

Off Papanui Road, CHRISTCHURCH. AN UP-TO-DATE HOUSE.

Excellent Accommodation. Liquors of Special Quality and Great Variety. Manning's Ales on Draught.

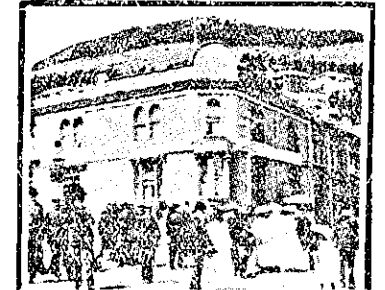
H. PIPER ... Proprietor.



LYTTELTON HOTEL, LYTTELTON.

(Under new management). The above Hotel has been renovated throughout, and now offers Accommodation second to none in Lyttelton. Cuisine under the personal supervision of Mrs. Hartshorn. Hot and Cold Water Baths. Best Brands of Ales, Wines, and Spirits. Excellent Billiard Table. Tariff Moderate.

Wm. HARTSHORN, Proprietor.

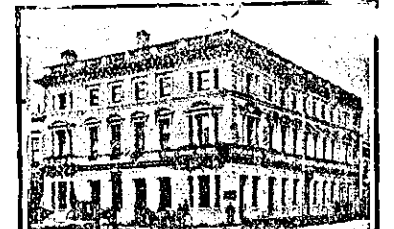


BRITISH HOTEL, LYTTELTON.

One Minute from Wharf, Railway Station and Post Office.

DANIEL J. KELLEHER ... Proprietor. This Well-known House has been enlarged to twice its original size, and Mr. Kelleher guarantees Visitors and the Travelling Public to receive the best attention.

Dunedin Ales. Wines and Spirits guaranteed. Absolutely the best Billiard Room in New Zealand. Tariff: 6s 6d per day; 35s per week.



EXCELSIOR HOTEL.

(Opp. Clock Tower), CHRISTCHURCH, N.Z.

TARIFF FROM 6s A DAY.

SPECIAL TERMS FOR THEATRICALS

Tel 1068. Box 599. A. R. ROWSE ... Proprietress.

SHORT AND CO'S STABLES.

SEDDON STREET, WAIHI.

G. PEACOCK ... Proprietor.

Carting of Every Description. Coaches and Cabs Meet All Trains. Wedding and Picnic Parties Specially Catered for. Furniture Removed. AGENT FOR THE N.Z. EXPRESS CO