

M. Bennie, J. D. Perrett, G. Ellis, W. Lyons (skip), 16.

Black and Baker were the winners in their respective sections in the Invitation Pairs.

The rinks prize in the pennant match was won by Lamb, McGregor, Fookes, and Wrathall (skip), with 7 wins and 1 loss. It was an object lesson to those clubs which persistently select "past lights" to represent them, as Wrathall had a team of colts.

The final of the Singles Championship rests with the two Auckland Club players, Black and Crowhurst.

THE N.Z. BOWLING ASSOCIATION'S TOURNAMENT.

This big tournament was concluded at Christchurch on Saturday. In the rinks final Caledonian (Fowler, Bastings, Scott and Keast, skip) beat Victoria (Hatch, Guise, Redstone, Bary, skip) by 22 to 21. At the 11th head the score was 16 to 7 in favour of Caledonian, the play being characterised by Keast's magnificent drawing. Entering the 20th head Bary was five down, and a great contest ensued. In the last head Bary had to score three to draw, or four to win. Both leads sent up good bowls, and the second man for Victoria left two shots. The third men (Redstone and Scott) did not alter the head. Bary tried to draw another shot, but his length was short. Keast followed and tried to get in a shot with a firm draw. The bowl missed by a fraction of an inch, and went to the back. With everything depending on his last shot, Bary tried another draw, but just failed.

Playing off for third place Clinton (Nelson, Hay, Rennie, and Sheddon skip) beat Christchurch (Scrivener, Seager, Dickson, McDougall skip) by 26 to 18.

In the doubles final Sale and Bently (Dunedin) beat Hamilton and Percious (Wellington) by 26 to 25. Mayer and Webb (Wellington) beat Maynard and M. S. Brown (Canterbury) by 20 to 17 for third place.

In the final for the Singles, McLaren beat Varcoe by 20 to 13.

A SOUTH ISLAND TEAM TO VISIT THE NORTH.

A meeting of the council of the New Zealand Bowling Association was held last week. A report was read by Mr. Waddell upon the suggestion that a team of South Island bowlers should tour the North Island, recommending that the proposal should be given effect to, the tour to commence on February 27, and to take in Wanganui, Palmerston North, Auckland, Rotorua, Napier, Masterton, and Wellington. It was stated that the Auckland centre had arranged a week's programme for that city. Mr. Waddell suggested that the association should take over the management of the tour, and ask clubs to nominate a player for inclusion in the team. The report was adopted, and a sub-committee was appointed to draw up a circular for distribution to the various clubs.

ATHLETICS.

A KNOTTY PROBLEM

According to the Sydney "Referee," a decision has been come to by the A.A. Union of Australasia that the Australian State Associations must be consulted and asked for instructions as to future procedure in the New Zealand crisis. The question of what is to be done is one that the executive officers affirm the State Associations must take the responsibility of saying. It is no matter of the secession of a portion of the N.Z.A.A.A., or the formation of a new body across the Tasman Sea, which confronts the executive, but a clear-cut statement from a Council in Wellington (with Dr. A. K. Newman as president and Mr. W. G. Talbot as secretary-treasurer) which in effect says that at a meeting of centres held in Christchurch it was resolved that no valid election for the year 1908-9 has taken place in New Zealand, and that the Council in Christchurch (Mr. W. G. Atack president, and Mr. J. H. Atker secretary-treasurer) is a Council only in name. With each body claiming to

be the "Council of the N.Z.A.A.A.," the executive of the Union has determined to temporarily suspend official relationship with the N.Z.A.A.A. pending instructions as to how to proceed—in point of fact, no other course is open. The executive officers are, and have been all along, closely in touch with what is going on in the athletic world in New Zealand, but deem that they have no power to deal with a case of the kind in evidence to-day in the Dominion. It is impossible for things to go on as they are, because, seemingly, quite outside the matter of control and procedure, there will shortly be two sets of New Zealand championships—and two New Zealand teams for the next Australasian championships in Brisbane, whereas only one team could be accepted.

CYCLING AND MOTOR NOTES.

The Onehunga Cycling Club will hold a social evening at Holmes' Hall to-night.

The annual sports meeting of the Onehunga C.T. Club will take place at Mangere on Feb. 27.

What is known as the Anjou Circuit in France has been officially accepted by the sporting committee of the French Automobile Club for this year's Grand Prix contest.

The starting and driving of a motor car are things easily mastered, but the first and most important matter for safety as regards inexperienced drivers is to learn to stop the car. This is meant in a deeper sense than in merely bringing the vehicle to a standstill. To know what to do just at the moment is the point, and it is only by constant practice and repetition in handling this lever and that pedal that one finally learns exactly what to do without requiring time to think. The driver has practically all day to start his car; his life and that of others may some day depend on how quickly and deftly he can stop it.

RUDGE CLUB'S RACE.

The Rudge Cycling Club held an eight-mile race on Saturday. The following were the entries and handicaps:—A. V. Docherty, 15s. behind scratch; B. Maberley and O. J. Lecky, scratch; A. Herring, 45s.; W. Sawyer,



NEW ZEALAND RAILWAYS

AUCKLAND SECTION.

ANNIVERSARY DAY.

Holiday Excursion tickets will be issued from any station to any station in the Auckland District on Friday, 29th January, available for return up to and including Friday, 5th February, 1909.

FRIDAY, 29th JANUARY, 1909.

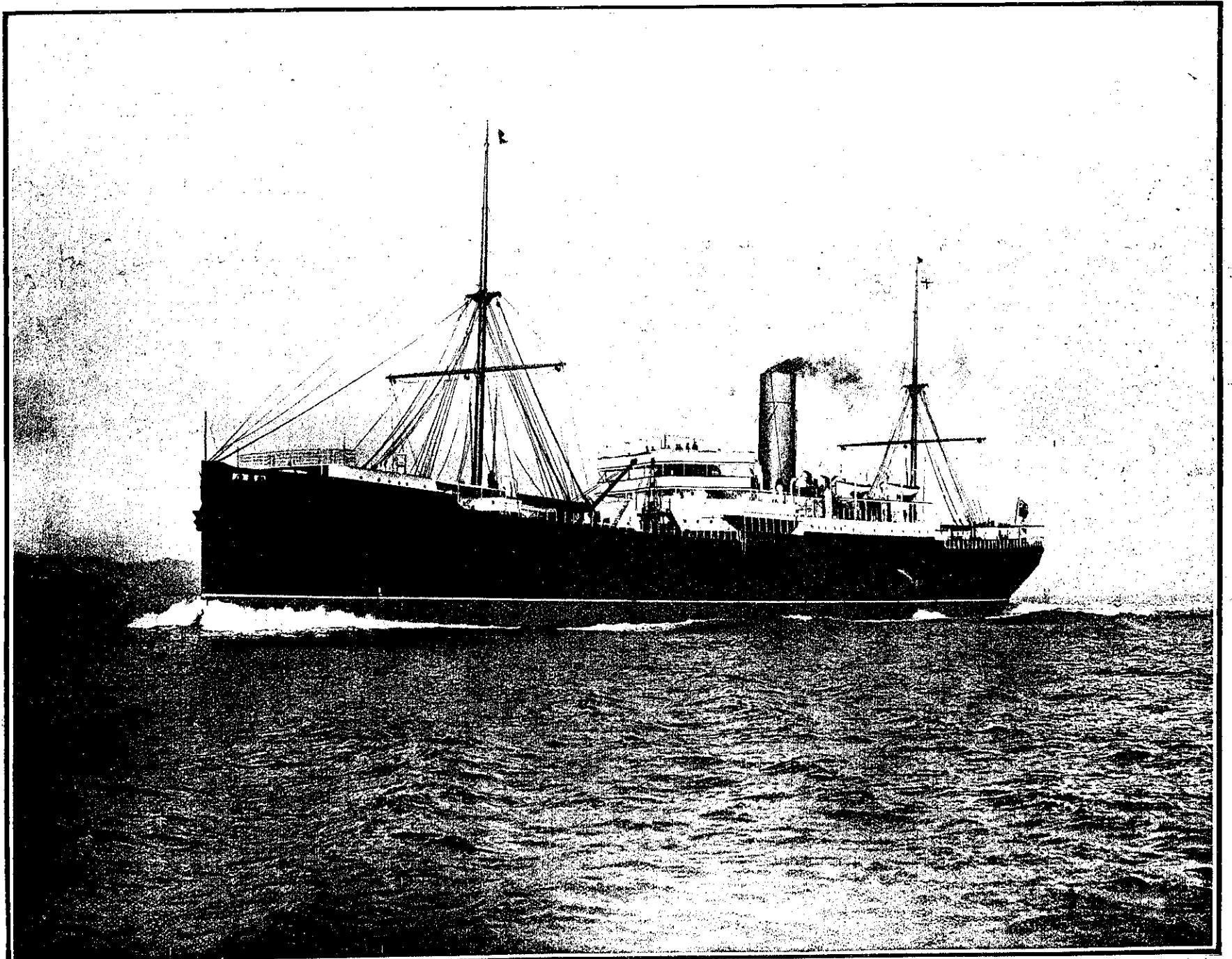
Day Excursion tickets to Te Aroha will be issued from Auckland, Onehunga, and stations on the direct route by 6.50 a.m. train on Friday, 29th January, available for return on days of issue only; first class, 12s.; second class, 7s.

A special train will leave Auckland for Te Aroha at 6.50 a.m., Newmarket 7.1, Frankton 10.43, Hamilton 10.48, arriving Te Aroha at noon, returning leaving Te Aroha at 4.30 p.m., arriving Auckland 9.20 p.m. These specials will stop for passenger traffic at Newmarket, Remuera, Ellerslie, Penrose, Otahuhu, Papakura, Drury, Pukekohe, Tuakau, Pokeno, Mercer, Huntly, Taupiri, Ngaruawahia, Frankton, Hamilton, Kirikiriroa, Eureka, and Morrinsville. They will also stop at Ngaruawahia Racecourse for passenger traffic.

A special train will leave Auckland for Helensville at 9.35 a.m., arriving Helensville 12.5 p.m., returning from Helensville at 6.15 p.m., arriving Auckland 9.0 p.m.

The Auckland Goods Sheds will be closed on 29th January.

BY ORDER.



THE N.Z. SHIPPING COMPANY'S NEW STEAMER OTAKI. NOW AT AUCKLAND.

This steamer is the only one in the world having both reciprocating engines and the steam turbine, and on her trial trip (as seen above) she averaged 15.02 knots. This is a high speed for a cargo steamer, and compares very favourably with her sister ships, Orari and Opawa which are without the turbine.