

NEW ZEALAND HOTEL DIRECTORY—(CONTINUED). — PATRONISED BY HORSEMEN, CYCLISTS, MOTORISTS, SPORTSMEN, COMMERCIAL TRAVELLERS, AND THE THEATRICAL PROFESSION.

WANGANUI.

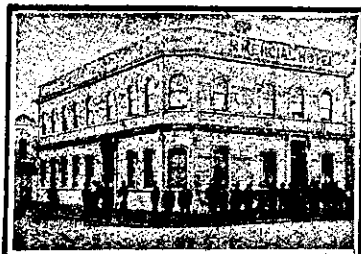


Established 1857..
Tel. No. 46. P.O. Box No. 54.
FITTED THROUGHOUT
WITH ELECTRIC LIGHT

FOSTER'S HOTEL,
Nearly opposite Town Bridge,
TAUPO QUAY, WANGANUI.

J. R. FOSTER, Proprietor.
Within Three Minutes of
Railway Station and River
Tourist Steamers.

COMMERCIAL HOTEL, WANGANUI



MR. H. J. TYRRELL (late of Bull
and formerly with U.S.S. Co.), has
taken over the above Hotel, and the
Public may rely on receiving a hearty
welcome and every comfort from Mr
Tyrrell.

Best Wines, Spirits, and Cigars kept
in stock.

ONLY SPEIGHT'S ALE ON
DRAUGHT.

Letters and Telegrams promptly at-
tended to.

Telephone 269.



RUTLAND HOTEL, WANGANUI.

F. C. FABER Proprietor.

THE HOME OF THE TOURIST.

The above Hotel has just been rebuilt
and newly furnished throughout in an
up-to-date style. The reading, writing
and smoke rooms are replete with
every convenience. The greatest care
is taken to maintain a reputation for
home comfort. Dark room for photo-
graphers.

THE PARKVILLE DRIVE
HOTEL.

RIDGWAY STREET,
WANGANUI.

Near Main Entrance to Cook's Gardens.

NEW AND UP-TO-DATE.

Specially adapted for the Convenience
and Comfort of the Travelling Public.
Beautiful Healthy Locality. One
minute's walk from Railway Station
and Post Office.

Hot and Cold Baths.
Commercial and Sitting Rooms, also
Writing Room for use of Patrons.

J. HODSON, Proprietor.
Telephone 505.
Telegrams and Correspondence at-
tended to.

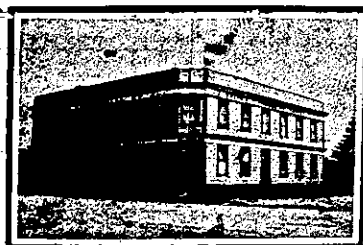


PROVINCIAL HOTEL, WANGANUI.

FIRST-CLASS ACCOMMODATION
FOR THE TRAVELLING PUBLIC.
ONLY THE BEST OF ALES, WINES,
AND SPIRITS KEPT IN STOCK.

W. TUCK Proprietor.

WAVERLEY.



COMMERCIAL HOTEL, WAVERLEY.

The recognised House for Commer-
cials and Tourists.

Patrons will receive all Home Com-
forts.

Letters and Telegrams promptly at-
tended to.

Speight's Dunedin Beer on Tap.

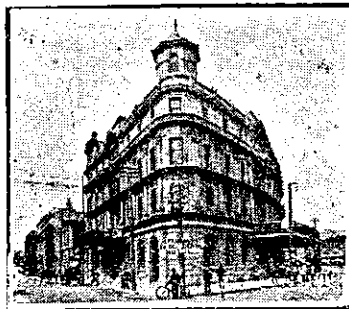
JAMES SMITH Proprietor.
(Late Manager Pritchard and Co.,
Wellington).

For Mutual Advantage, please men-
tion this paper when communicat-
ing with our Advertisers.

WELLINGTON.—Continued.

WHEN VISITING
WELLINGTON,
STAY AT
THE

ALBERT HOTEL
Which has recently been
re-furnished from cellar
to ceiling, and possesses
every modern convenience.
Letters and telegrams
will receive prompt attention.
T. G. ASHMAN, Proprietor.



NEW OCCIDENTAL HOTEL.

LAMBTON QUAY, WELLINGTON.

J. H. FAIRBAIRN .. Proprietor.

UP TO DATE IN EVERY RESPECT.

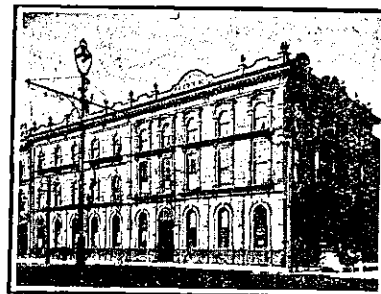
ELECTRIC ELEVATOR.

DAY AND NIGHT PORTER.

Tariff, 8s Per Day. Garden Roof.

A Bottle Store adjoins the Hotel,
where a single bottle may be obtained at
wholesale price.

Best Brands of Wines, Spirits and
Ales. Telephone 91.



CLUB HOTEL,

LAMBTON QUAY, WELLINGTON.

PROPRIETOR: E. WILSON

(Late of Post Office Hotel).

The Favourite Hotel for Country
Gentlemen, Tourists and Travellers.
Good Table and very Best Wines and
Spirits.

SPEIGHT'S BEER ON TAP
Letters and Telegrams promptly at-
tended to.

Night Porter in Attendance.



THE PALACE HOTEL, WILLIS-
STREET.

Wellington's Most Comfortable Hos-
telery. Magnificently Furnished. Re-
plete with Every Modern Convenience.
Electric Light Throughout. Perfect
Cuisine. Now under the Management
of JAMES AITKEN. Communications
promptly replied to. Telephone 863.

WESTPORT.



GRAND HOTEL

PALMERSTON-STREET

WESTPORT.

DAVID LEECH Proprietor

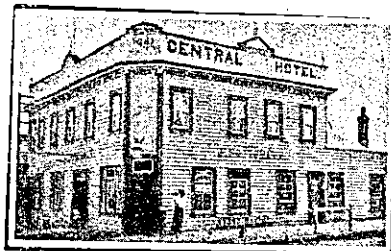
Printed and Published by Arthur Cleave, of Ellerslie, at his Registered Printing
Office, Vulcan Lane, Auckland, for the Proprietors, Arthur Cleave and Co.,
Ltd. THURSDAY, JANUARY 7, 1909.

WOODVILLE.

LAING'S MASONIC HOTEL,
WOODVILLE.

Excellent Accommodation for the
Travelling Public at a Moderate Tariff.
Best Wines Spiritz, Ale, etc Good
Billiard Table.
Ample Stabling and Paddocking.
Coaches run twice daily to Shannon.

ANDREW LAING (late of Foxton)
Proprietor.

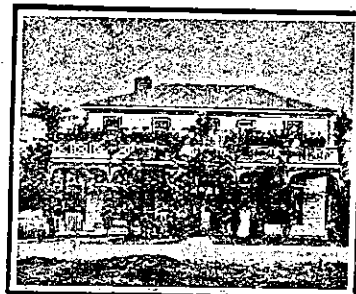


CENTRAL HOTEL, WOODVILLE,
HAWKE'S BAY.

J. BOTTOMLEY .. Proprietor.

J.B. would remind all old friends and
the travelling public generally that he
is still conducting the above hotel. The
Central is suitably adapted for visitors
to Woodville on account of its central
position, and its prestige for Good Ac-
commodation and Quality of Liquors
and Ales is established.

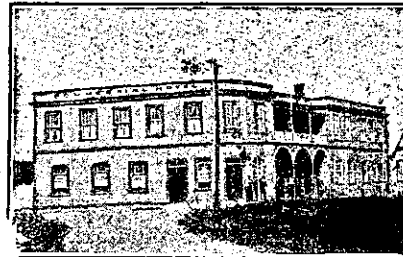
WHANGAMOANA.



WHANGAMOMONA HOTEL,
WHANGAMOMONA.

WM. ABBOTT, Proprietor. Every-
thing up to date. First-class Accom-
modation for Travellers and the Gen-
eral Public. Only Best Brands of
Wines and Spirits kept in Stock.

WHANGAREI.



COMMERCIAL HOTEL,
WHANGAREI.

H. J. BRAY

Having taken over the above Hotel, has
increased the Accommodation and re-
novated the Premises throughout. Cus-
tomers can rely on Every Comfort and
Attention.

THE BEST BRANDS OF WINES AND
SPIRITS KEPT IN STOCK.
Ample Sample Rooms for Commer-
cial Travellers. Good Billiard Table.
Stable Accommodation Superior to
anything North of Auckland.



WHANGAREI HOTEL,
WHANGAREI.

This fine House, just re-built in
brick and furnished in up-to-date style,
now offers unrivalled accommodation
to the Travelling Public.

Sample Room. Hot and Cold Baths.

Two minutes' walk from Saltwater
Bathing Place.

Stabling Second to None

Best Wines, Ales and Spirits kept in
Stock.

SAMUEL McMAHON Proprietor

McGAVIN'S

DUNEDIN PRIZE ALES

AND STOUT

IN BULK AND BOTTLE.

SOLD IN THE

PRINCIPAL HOTELS

THROUGHOUT THE

DOMINION.