

NEW ZEALAND HOTEL DIRECTORY—(CONTINUED). — PATRONISED BY HORSEMEN, CYCLISTS, MOTORISTS, SPORTSMEN, COMMERCIAL TRAVELLERS AND THE THEATRICAL PROFESSION.

PALMERSTON NORTH.—Continued.

THE COMMERCIAL HOTEL. PALMERSTON NORTH. T. CHILDS Proprietor. The proprietor of this conveniently-situated Hotel having had the premises entirely renovated and remodelled, is prepared to receive travellers and the public generally, and guarantees strict attention, the best of Wines and Spirits, and trusts to obtain by these means a fair share of patronage.

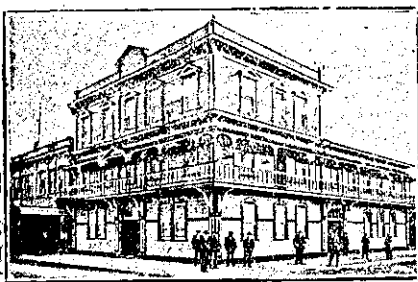
DEVINE'S EMPIRE HOTEL, MAIN STREET, PALMERSTON NORTH.

A First-class Family and Commercial Hotel. Convenient to all public offices and places of amusement. Letters and telegrams will receive prompt attention. Telephone 108. P.O. Box 193.

W. DEVINE Proprietor.

THE NEW RAILWAY HOTEL (Opposite Railway Station) PALMERSTON NORTH.

J. HURLEY Proprietor. Over 70 Rooms, 6 Bathrooms (hot and cold water), newly furnished throughout. Up-to-date in every respect. First-class Table. Best Liquor only. Terms Moderate.

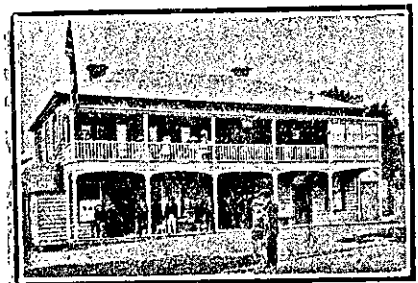


CENTRAL HOTEL, PALMERSTON NORTH.

The Central Hotel on Main-st. West in Palmerston is surely the best. The tables good, the bedrooms fine, with best of spirits, beer and wine; fine sitting-rooms, baths hot and cold. And a welcome sure for young and old. So call on me when next you pass.

A. F. ANDERSON Proprietor.

RAWENE.



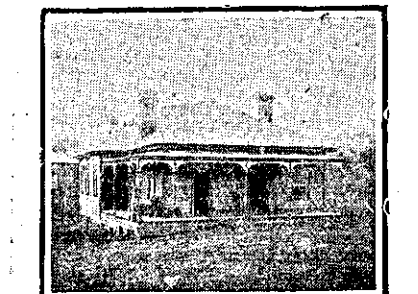
MASONIC HOTEL, RAWENE.

Every Accommodation at this old and favourite Hostelry may be found for Commercial Travellers, Tourists and Family Parties.

No Trouble Spared. Good Table Kept at All Charges Most Reasonable. WINES, SPIRITS AND BEERS OF THE BEST. Billiards, Boats, Stables, etc.

F. FERGUSON Proprietor.

TANGITEROIA.



TANGITEROIA HOTEL. G. BURDETT Proprietor.

On the road from Whangarei to Dargaville. Every Convenience for Travellers and Tourists. The Famous Wairua Falls are a few miles distant from the Hotel. One of the Sights of the North.

RUSSELL.



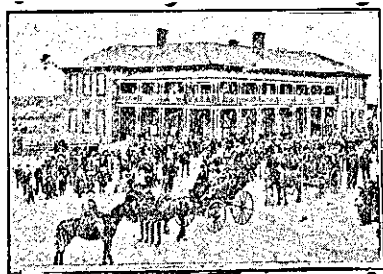
DUKE OF MARLBOROUGH HOTEL, RUSSELL, BAY OF ISLANDS.

DAVID FORSYTH Proprietor. Wishes everyone to know that he has taken over the above long and favourably-known House. Attention and Civility, as well as a Good Table guaranteed, with "some" Fish of the choicest almost every day. Give the House a Call, and try the new Proprietor. Boats and Horses for Hire. Billiards, etc. Charges Reasonable. Nothing but the Best of Beers and Liquors kept in Stock.

TAURANGA.

TAURANGA HOTEL, STRAND, TAURANGA. Under New Management. T. R. NIXON. (Late of Carpenters' Arm, Auckland). Desires to intimate that he has taken over the above popular House, where he will be pleased to meet old and new Patrons. Extensive Alterations and Improvements have been effected, and visitors will find every comfort and convenience. Tariff moderate. Wines and Spirits of Best Brands only. Night Porter in attendance.

TE AROHA.



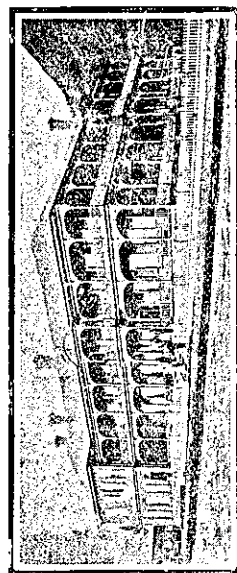
PALACE HOTEL THE PREMIER HOTEL OF TE AROHA.

FRANK PILLING Owner.

Offers Special Accommodation for Tourists, Families and Visitors. Commercial Sample Room. Telegrams Promptly Attended to. Spacious Bedrooms, Private Parlours. Hot, Cold, and Shower Baths.

TARIFF: From 7s Per Day.

THE SPORTING HOTEL OF THE DISTRICT



HOT SPRINGS HOTEL, TE AROHA. UNDER DISTINGUISHED PATRONAGE. R. L. SOMERS Proprietor.

TE AWAMUTU.

COMMERCIAL HOTEL, TE AWAMUTU.

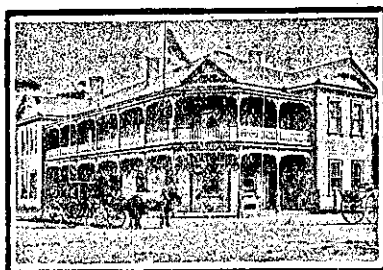
JOSEPH BATHURST Proprietor. EVERY MODERN CONVENIENCE. BATH ROOMS, BILLIARD ROOM. FIRST-CLASS SAMPLE ROOMS.

TE AWAMUTU HOTEL, TE AWAMUTU.

JAMES JACKSON Proprietor.

First-class Accommodation; Moderate Tariff. Only Best Brands Ales, Wines, A Free House, Dunedin Beer on Draught.

THAMES.



ROYAL HOTEL, THAMES.

Nearest Hotel to Wharf and Railway Station. All Modern Conveniences. Best of Accommodation. The Best Brands of Wines and Spirits only Stocked. Telephone No. 17. P.O. Box 32. Night Porter in Attendance. W. H. GAW Proprietor.

LADY BOWEN HOTEL.

BROWN STREET, THAMES. E. L. BRADLEY Proprietor. Good Accommodation for the travelling public. Wines and Spirits of Best Brands only kept in stock. Campbell Ehrenfried's XXXX Ale on draught.

THAMES (continued).

PURIRI HOTEL, PURIRI.

(10 Miles from Thames).

JOHN GANLEY Proprietor.

FIRST-CLASS ACCOMMODATION. CHARGES MODERATE. ONLY BEST BRANDS ALES, WINES AND SPIRITS KEPT.

SALUTATION HOTEL.

MARY-STREET, THAMES.

H. ROWNLEE Proprietor.

SUPERIOR ACCOMMODATION. BEST BRANDS OF BOTTLED ALES AND FOUT, SPIRITS, WINES, ETC. SPEIGHT'S DUNEDIN ALE ON DRAUGHT.

TIMARU.

EXCELSIOR HOTEL.

TIMARU.

ROBERT PORTER Proprietor.

The most centrally situated Hotel in Timaru, and the home of the Commercial Traveller. Only one minute's walk from railway station and P.O.

Hotel Express meets all trains. Terms—From 6s. 6d. per day, and from 35s. per week.

Telegrams, "Excelsior." Telephone 154. P.O. Box 4.

CROWN HOTEL, TIMARU.

W. QUIRK Proprietor (Late of Oamaru).

Has pleasure in notifying the Public of Timaru and surrounding districts that he has taken over the above well-known Hotel, and will run it on the best lines. Good Table and Accommodation. All the Best Brands of Ales and Liquors on sale.

W. QUIRK Proprietor.

MELVILLE HOTEL, TIMARU.

J. REILLY Proprietor

(Late of Wallingford Hotel, Temuka). The Proprietor will be pleased to see Old and New Friends at the Melville. BEST WINES AND SPIRITS ONLY.

COMMERCIAL HOTEL, TIMARU.

(Opposite Rotunda, Stafford-street. MRS. A. A. WEBB Proprietress (Late of Middlemarch).

Superior Accommodation for Visitors and Boarders. All the Comforts of a Home. Wines, Spirits and Ales of the Best Brands. Charges Strictly Moderate.

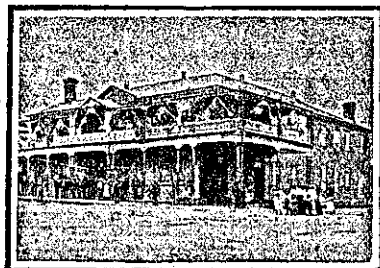
CLUB HOTEL, TIMARU.

Close to Railway Station, and offering Excellent Accommodation to Travellers.

Liberal Cuisine. Hot and Cold Baths. Best Brands of Liquors Stocked.

Moderate Tariff. E. WARD Proprietor.

WAIHI.

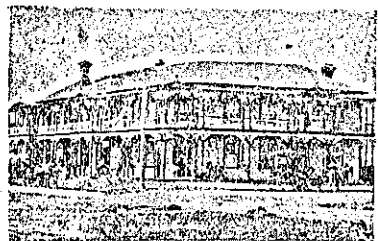


ROB ROY HOTEL, WAIHI.

"Cead Mille Failthe."

JOHN KELLY Proprietor.

Only the Best Brands of Liquor stocked. Campbell-Ehrenfried's XXXX Ale. Accommodation of the Best provided.



CENTRAL HOTEL, WAIHI.

ALFRED BUCKLAND Proprietor.

Every Modern Comfort and Convenience for Tourists, Travellers, and Families. First-class Table. Only Best Brands of Ales, Wines and Spirits on Stock. Terms Moderate.

WAIHI.—Continued.



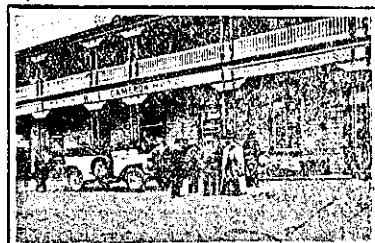
WAIHI HOTEL, WAIHI.

The Accommodation is unsurpassed and the Charges Moderate. Sample Rooms for Travellers. Hall for concerts, socials, etc. Terms on application.

Coaches leave the Door for Katikati, Tauranga, etc.

Telegrams: "Meyer," Waihi. Box 34. H. E. MEYER Licensee.

WAIKINO.



WAIKINO HOTEL, WAIKINO.

H. F. CAMERON Proprietor.

ONLY BEST BRANDS WINES, SPIRITS KEPT. Up-to-Date Accommodation for Travellers and the General Public.

WAIMATE.



WAIMATE HOTEL, WAIMATE.

This Hotel is a Fine New Modern Brick Building, up-to-date in every respect.

Superior Accommodation for Travellers, Visitors and Tourists.

Hot and Cold Shower and Plunge Baths. Sample Rooms. First-class Table. Every Attention. T. TWOMEY Proprietor.

WAIPAWA.

COMMERCIAL HOTEL, WAIPAWA.

Private Suites of Apartments and every Convenience for the Accommodation of the Public.

WINES, SPIRITS and BEER OF THE BEST QUALITY ONLY. A FIRST-CLASS BILLIARD TABLE. Good Stabling and Paddock Accommodation.

W. PELLOW Proprietor.

WAVERLEY.

CLARENDON HOTEL, WAVERLEY.

MR. G. W. OAKENFULL

Desires to inform the travelling public and residents of Waverley that he has taken over the Clarendon Hotel. He hopes that with strict attention to the comfort of his guests, a good table, and the best of Ales, Wines, Spirits, etc., to be favoured with their patronage.

WHANGAROA.



MASONIC HOTEL, WHANGAROA.

C. GOTHARD Proprietor.

Wines and Spirits of the Best Brands. First-class Accommodation for Visitors, Tourists, and Commercial Travellers.

Plunge and Shower Baths. Paddock. Horses for Hire. Billiards. A magnificent place for a Holiday. Tariff: 6s Per Day.