

**NEW ZEALAND HOTEL DIRECTORY—(CONTINUED). — PATRONISED BY HORSEMEN, CYCLISTS, MOTORISTS, SPORTSMEN, COMMERCIAL TRAVELLERS AND THE THEATRICAL PROFESSION.**

**CHRISTCHURCH.—Continued.**



**THE NEW CLARENDON HOTEL,**  
CHRISTCHURCH.  
CORNER OF OXFORD TERRACE  
AND WORCESTER-STREET  
(One Minute's Walk from General Post Office.  
Recently Re-built. Superior Accommodation for Tourists and Travellers. All Modern Conveniences. Splendidly Situated.  
D. COLLINS .. Proprietor.



**MARINE HOTEL,** SUMNER.  
An Ideal Holiday Resort, offering excellent Accommodation for the Travelling Public.  
BEST BRANDS OF WINES AND SPIRITS. HOT, COLD, AND SHOWER BATHS. BILLIARD TABLE.  
JAS. HATFIELD ..... Proprietor.

Where to Stay in Christchurch?

**STOREY'S FAMILY HOTEL**  
(Late Terminus).  
Right Opposite Railway Station.  
Convenient to all parts of city and suburbs, as Electric Cars start from the door.  
Excellent Cuisine.  
Tariff on application  
WM. JAMES ..... Proprietor.

Do You Want Accommodation?  
Then Interview  
CHARLIE L. STARK.  
(Late of Gore, Oamaru, and Waimate).

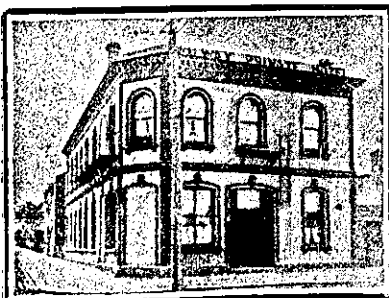
**CAVERSHAM HOTEL**  
Corner HIGH AND MADRAS STS., CHRISTCHURCH.  
Where he will supply you with a Good Bed and the Best of Meals, for 4s 6d per day. Ask your Cabman to drive you to the CAVERSHAM. Manning's Celebrated Ales.

**GROSVENOR HOTEL,** corner Moorhouse Avenue and Madras Street, CHRISTCHURCH.  
One Minute from the Railway Station and Trams.  
JOHN JACKSON .. Proprietor  
(Late of Governor's Bay).  
This house has been thoroughly renovated, and visitors will find every comfort and convenience, combined with civility and attention. Only the best Wines and Spirits in Stock.

**DUNEDIN.**

**GLADSTONE HOTEL**  
MACLAGGAN-STREET, DUNEDIN.  
JOHN COLLINS .. Proprietor.  
(Late of Al Hotel, Pelichet Bay).  
The most Centrally-situated Hotel in the City. First-class Accommodation for Tourists Travellers, and Boarders. Suites of rooms for Families. Charges Moderate. A Special Feature: 1s Lunch from 12 to 2 o'clock. Hot, Cold, and Shower Baths. The Very Best of Wines, Ales, and Spirits supplied.

**CRITERION HOTEL,** PRINCES STREET, DUNEDIN.  
First-class Accommodation for Boarders and Travelling Public. Prompt attention to Letters and Telegrams. Night and Day Porter kept. SPEIGHT'S ALES ON DRAUGHT. Telephone 211. P.O. Box 421.  
JAMES MURPHY .. Proprietor



**RAILWAY PRIVATE HOTEL,**  
Corner CASTLE AND ST. ANDREW STS., DUNEDIN.  
(Two Minutes from Railway Station.)  
TARIFF, 4s. PER DAY.  
Weekly by Arrangement.  
J. BAIRD ..... Proprietor.

**DUNEDIN.—Continued.**

**BOWLING GREEN HOTEL.**  
Corner of Frederick and Cumberland streets, DUNEDIN.  
W. D. Wyatt, late of Wellington, begs to inform his Friends and Country Visitors that he has taken the above well-known Hotel, which has been thoroughly Renovated and Refurnished, and is now in a position to offer his Patrons First-class Accommodation.  
TERMS MODERATE. NOTED HOUSE FOR BEST WINES AND SPIRITS.

**SOUTHERN HOTEL,** PRINCES-STREET, DUNEDIN.

H. T. ANDREWS .. Proprietor.  
(Late of Wolseley Hotel, Winchester).  
Splendid accommodation for Visitors. Only the very Best Wines and Spirits Stocked.

**ELTHAM.**

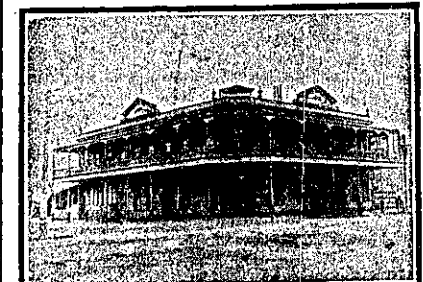
**A COMFORTABLE HOSTELRY.**

CHARLES POTTS  
Begs to intimate that he has entered into possession of the  
**CENTRAL HOTEL**  
(late Branch Hotel),  
BRIDGE-STREET, ELTHAM.

Wines, Spirits and Liqueurs of the choicest quality. The Cuisine is under the management of an Experienced Chef. Hot Lunch Daily from 12.30 Saturday and Sale Days from 12.

**FEILDING.**

WHEN VISITING  
FEILDING,  
DON'T FORGET  
Harry Parker  
AT THE  
**EMPIRE HOTEL**  
EXCELLENT ACCOMMODATION for Travellers and Tourists.  
LETTERS AND WIRES PROMPTLY ATTENDED TO.



**MANCHESTER HOTEL,** FEILDING.  
This centrally and conveniently-situated Hotel offers the best Accommodation for the Travelling Public. Replete with every modern convenience. Best Brands of Ales, Wines, Spirits, etc., kept on Stock.  
D. P. BARRETT .... Proprietor.

**HOKIANGA.**



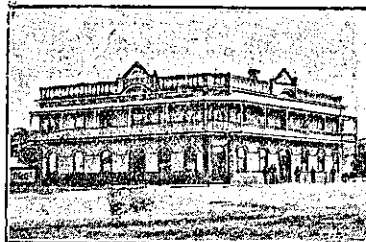
**HOREKE HOTEL.**  
SIDNEY COOPER ..... Proprietor.  
Mail Coach and Steamer Terminus for Hokianga.  
First-class Accommodation for Travellers and the general public.

**PAEROA BREWERY CO., LTD.**  
BREWERS, BOTTLERS, WINE AND SPIRIT MERCHANTS.  
Victoria Brewery, PAEROA, Telephone 30.  
Victoria Bottling Stores:  
KENNY-STREET, WAHIA Tel 39.  
Pure Beer, brewed only from Finest Malt and Hops.  
Invalid Stout a specialty.  
All kinds of Wines and Spirits in Stock.

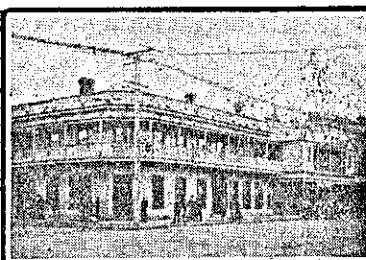
**FEATHERSTON.**

**EMPIRE HOTEL AND LIVERY STABLES,** FEATHERSTON.  
The EMPIRE is the appointed Hotel to the Wellington Commercial Travellers' Association and N.Z. Cyclists' Touring Club.  
JOHN CARD ..... Proprietor.

**GISBORNE.**

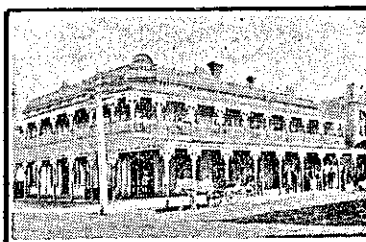


**TURANGANUI HOTEL,** WHARF, GISBORNE.  
JAMES WALLACE .. Proprietor.  
SPEIGHT'S XXX ALE ON DRAUGHT. Wines and Spirits of Best Brands. First-class Billiard Table.



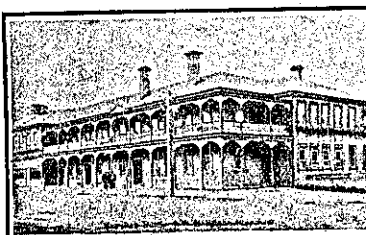
**MASONIC HOTEL,** GISBORNE.  
T. H. HALL ..... Proprietor.  
Travellers and the General Public will receive every attention and good Accommodation.  
Wines and Spirits of the Best Brands only Stocked.

**HAMILTON.**



**COMMERCIAL HOTEL,** HAMILTON.  
JASPER MONTGOMERY . Proprietor.  
The Travelling Public specially Catered for.  
TERMS MODERATE.  
Telephone No. 12.

**FRANKTON HOTEL**  
(Opposite Station).  
D.HOLLAND ..... Proprietor.  
Best Brands Wines and Spirits Kept. Hancock's XXX Ales.  
First-class Accommodation for Tourists and the General Public.



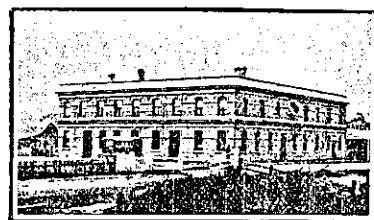
**HAMILTON HOTEL,** HAMILTON.  
J. B. HOOPER ..... Proprietor.  
This Commodious and Up-to-date Hotel is replete with every modern convenience for the Comfort of Visitors. The Cuisine is first-class. Tariff Moderate.  
ONLY THE BEST OF LIQUORS KEPT ON STOCK.

UNDER NEW MANAGEMENT.



**WESTCOURT,** HAMILTON  
(Opposite Railway Station).  
PRIVATE BOARD AND RESIDENCE.  
TARIFF: 4s 6d PER DAY.  
D. McVICAR .... Proprietor.

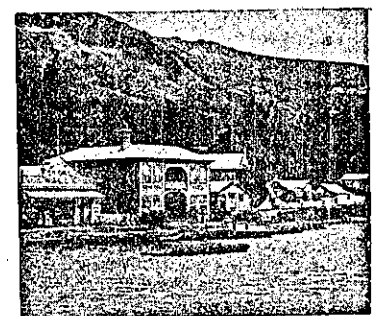
**HELENSVILLE.**



**TERMINUS HOTEL,** HELENSVILLE.  
J. A. McLEOD .... Proprietor.  
It is most conveniently situated to the Helensville main railway station and wharves. Bus runs twice daily from Hotel to Hot Springs.  
A good Billiard Table, Sample, and Committee Rooms.

**STABLING.**

**HOKIANGA.**



**OHUKOHU HOTEL,** KOHUKOHU, HOKIANGA.  
THE PRINCIPAL TOWNSHIP IN THE NORTH.  
Every Accommodation in this New, Clean, and Tidy Hostelry. All Liquors of the very best. Billiards, Stables, Good Meals. Charges in all Departments—Moderate.  
JOHN NICHOLSON .. Proprietor.



**OPONONI HOTEL,** OTHONONI, HOKIANGA.  
The Tourists' Resort of the North. Adjacent to Sea Beach, where Tourists can indulge in Sea Bathing, Boating, Fishing, Horse Riding, Tennis, etc.  
A. S. ANDREWES .. Proprietor.  
A. S. ANDREWES AND SONS, General Storekeepers, Gumbuyers, Timber Brokers, etc. Opononi, Koutu, Waikamaku. Telegraphic Address: Andrewes, Opononi.

**HOKITIKA.**

**COMMERCIAL HOTEL,** REVELL STREET, HOKITIKA.  
THOS. PALMER .. Proprietor.  
(Late Cameron's Hotel).  
This Hotel is situated next to Cameron's Stables, and has been renovated throughout, and has every convenience for Travellers, Tourists, and the General Public. Hot and Cold Water Baths. Visitors will receive a hearty welcome. Only the Very Best of Wines, Spirits, and Ales kept. Board and Lodging. Moderate Charge; Permanent Boarders by arrangement.

**HUKERENUI.**

**HUKERENUI HOTEL,** HUKERENUI.  
THE TERMINUS OF THE RAILWAY.  
Having secured the Freehold of the above convenient Hotel, the Proprietress is now making extensive and permanent alterations, so as to comfortably accommodate the Travelling Public who use it. Free House, and Liquors of the Best. A Good Table kept and Charges Moderate.  
M. E. KEATLEY .... Proprietress.

**HUNTERVILLE.**

**HUNTERVILLE HOTEL,** HUNTERVILLE.  
E. D. HAMMOND .... Proprietor  
The Proprietor wishes to intimate that he has just taken over the above premises. This Hotel offers superior Accommodation to Travellers. Good Table. Best of Wines, Ales, etc. Terms: 4s 6d per day.

**HUNTLY.**

**HUNTLY HOTEL,** HUNTLY  
L. B. HARRIS .... Proprietor.  
This Hotel is now one of the largest in the Waikato. All trains stop at Huntly, and the Hotel is a few yards from the Station. First-class Accommodation and Excellent Table.

**KAMO.**

**KAMO HOTEL,** KAMO.  
A. J. J. MEYER .. Proprietor.  
Good Accommodation for Visitors and Travellers.  
Best Brands of Wines and Spirits. Good Stabling and First-class Paddock.