

HANDICAP of 25sovs, second horse to receive 5sovs from the stake. Nomination, 10s; Acceptance, 10s. One mile. Minimum weight 9st.

4. 3.15 p.m.—**WHANGAREI CUP HANDICAP** (open) of 60sovs, second horse to receive 10sovs from the stake. Nomination, 21; Acceptance, 21. One mile and a distance.

5. 4 p.m.—**SETTLERS' HANDICAP** of 20sovs, second horse to receive 3sovs from the stake. For horses that have been owned and located in any County north of the Waitemata County three months prior to date of entry. Nomination, 10s; Acceptance, 10s. Six furlongs.

6. 4.45 p.m.—**PUBLICAN'S PURSE HANDICAP** of 25sovs, second horse to receive 5sovs from the stake. Nomination, 10s; Acceptance, 10s. One mile.

7. 5.15 p.m.—**FLYING HANDICAP** (open) of 25sovs, second horse to receive 5sovs from the stake. Nomination, 10s; Acceptance, 10s. Five furlongs.

SECOND DAY.

1. 1 p.m.—**MAIDEN PLATE HANDICAP** of 25sovs, second horse to receive 5sovs from the stake. Open to horses that have never won a flat race exceeding £10 at time of starting. Nomination, 10s; Acceptance, 10s. Seven furlongs.

2. 1.45 p.m.—**SECOND HURDLE HANDICAP** (open) of 30sovs, second horse to receive 5sovs from the stake. Nomination, 10s; Acceptance, 15s. One mile and a-half over six flights of hurdles, about 3ft 6in in height.

2. 2.30 p.m.—**LADIES' BRACELET HANDICAP** of 25sovs. A bracelet of the value of 20sovs for the first horse and a bracelet of the value of 5sovs for the second horse. All horses to be nominated by ladies. Gentlemen riders. Minimum weight 9st 7lb. Nomination, 10s; Acceptance, 10s. One mile.

4. 3.15 p.m.—**PARK HANDICAP** (open) of 40sovs, second horse to receive 6sovs from the stake. Nomination, 15s; Acceptance, 21. One mile.

5. 4 p.m.—**MARSDEN STAKES** of 20 sovs, second horse to receive 3sovs from the stake. Nomination, 10s; Acceptance, 10s. Five furlongs.

6. 4.45 p.m.—**HACK HANDICAP** of 25 sovs, second horse to receive 5sovs from the stake. For horses that have not won a race exceeding 20sovs at time of entry. Other conditions same as Settlers' Handicap. Nomination, 10s; Acceptance, 10s. Seven furlongs.

7. 5.15 p.m.—**FAREWELL HANDICAP** (open) of 30sovs, second horse to receive 5sovs from the stake. Nomination, 10s; Acceptance, 10s. Five furlongs.

NOMINATIONS for all Races close on **FRIDAY, 13th December, 1908**, at the Secretary's Office, Whangarei, and with **MR. H. HAYR**, High street, Auckland, at 9 p.m.

WEIGHTS for the First Day will be declared on or about **WEDNESDAY, December 30th, 1908**.

ACCEPTANCES for First Day close at the Secretary's Office, Whangarei, and at **H. H. Hayr's**, Auckland, **TUESDAY January 5th, 1909**, at 9 p.m.

WEIGHTS for Second Day will be declared on **FRIDAY, January 8, at 8 p.m.**

ACCEPTANCES for Second Day close at 10 p.m. on **FRIDAY, 8th January, 1909** at Secretary's Office, Whangarei.

PENALTIES, FLAT RACES—The winner of any Flat Race after the declaration of weights to carry a penalty of 10lbs, and of every additional race a further penalty of 6lbs. Horses handicapped at 8st 10lbs or over to carry only half the above penalty. (Applies to Whangarei Meeting only).

The winner of any race of £40 or upwards after declaration of weights may be re-handicapped.

NOTE: Races First Day, Nos. 1, 3, 5, 6; Second Day, Nos. 1, 3, 5, 6, are open only to any horses that have been owned and located in any County north of the Waitemata County three months prior to date of entry. Nos. 2, 4, 7, First Day, and Nos. 2, 4, 7, Second Day, are open races.

RULES AND REGULATIONS.

All races to be run under the N.Z. Rules of Racing.

Entries by telegram must be confirmed in writing at the earliest possible opportunity.

Owners, Trainers, and others are notified that entries or acceptances must be accompanied by the necessary amount in cash.

Owners are responsible for all penalties.

All persons intending to withdraw horses are required to give notice to that effect to the Secretary or Clerk of the Scales one half-hour before the official time for starting the race. Any person neglecting, or refusing to comply with this rule shall pay a fine, to be imposed by the Stewards, not exceeding 20sovs, to the race fund.

Prior to any race the Stewards may order a parade in front of the stand. Any horse absent from such parade, without the permission of the Stewards, will be fined 2sovs.

Any owner running a horse in colours other than those named at time of entry will be fined 150v.

Gentlemen riders will require to hold a Gentleman Rider's certificate.

R. J. DENT, Secretary, W.R.C.

OTAHUHU TROTTING CLUB.

SPRING MEETING, 1908.
To be held at
ALEXANDRA PARK, EPSOM
(Under the Rules of New Zealand Trotting Conference).
SATURDAY AND WEDNESDAY,
NOVEMBER 14th AND 18th.

President: Mr. W. F. Massey, M.P. Vice-Presidents: Messrs. F. W. Lang, M.P., J. G. Rutherford, J. Todd, J.P., J. Rowe, J.P. Stewards: Messrs. A. Selby, R. L. Absolum, W. Casey, W. C. Watts, W. Hunt, McKenzie, Turnbull, A. Craig, J. Molloy, W. Gray, J. Harper, G. Thoms, J. J. Russell, and H. Smales, Judge: Mr. R. L. Absolum. Starter: Mr. C. O'Connor. Handicapper: Mr. F. W. Edwards. Clerk of Scales: Mr. H. B. Massey. Clerk of Course: Mr. T. A. Brown. Treasurer: Mr. A. Selby. Auditor: Mr. W. H. Churton, F.S.A.A., Eng. Hon. Vet. Surgeon: Mr. R. P. Kinloch. Time-keepers: Messrs. F. Macmanamin and F. W. Edwards.

PROGRAMME.
Passed by the New Zealand Trotting Association.
Pony races passed by A.R.C.

FIRST DAY.

SATURDAY, NOVEMBER 14, 1908.

TRIAL TROT HANDICAP of 25sovs; second horse to receive 5sovs from the stake. Limit, 3min. For all horses that have never won an advertised trotting race exceeding 15 sovs value at time of entry. Nomination, 10s; acceptance, 10s. Distance, 1 1/2 miles.

MANGERE TROT HANDICAP of 30 sovs; second horse to receive 5sovs from the stake. For all horses that have never won a race at better than 2min. 40sec. to the mile. All entrants will be handicapped to trot 2min. 52sec. or better to the mile. Nomination, 10s; acceptance, 15s. Distance, 1 1/2 miles.

OTAHUHU SPRING TROT HANDICAP of 50sovs; second horse to receive 10sovs from the stake. All horses will be handicapped to trot 2min. 42sec. or better to the mile. Nomination, 20s; acceptance, 20s. Distance, 2 miles.

SPRING PONY HANDICAP of 35sovs; second pony to receive 5sovs from the stake. For ponies 14 hands 3 inches and under. Nomination, 10s; acceptance, 20s. Distance, 6 1/2 furlongs.

TROTting HANDICAP of 45sovs; second horse to receive 5sovs from the stake. Limit, 2m. 50sec. to the mile. For trotters only. Nomination, 15s; acceptance, 20s. Distance, 1 1/2 miles.

ELECTRIC TROT HANDICAP of 35 sovs; second horse to receive 5sovs from the stake. All horses will be handicapped to trot 2min. 45sec. or better to the mile. Nomination, 10s; acceptance, 20s. Distance, 1 mile.

TRAMWAY HANDICAP of 35sovs; second pony to receive 5sovs from the stake. For ponies 14 hands 3 inches and under. Winner of Spring Pony Handicap to carry a penalty of 7lb extra. Nomination, 10s; acceptance, 20s. Distance, about 4 furlongs.

ONEHUNGA TROT HANDICAP of 40 sovs; second horse to receive 5sovs from the stake. All horses will be handicapped to trot 2min. 40sec. or better to the mile. Nomination, 10s; acceptance, 20s. Distance, 1 1/2 miles.

SECOND DAY.

SATURDAY, NOVEMBER 21, 1908.

INNOVATION TROT HANDICAP of 25 sovs; second horse to receive 5sovs from the stake. For all horses that have never won an advertised trotting race at time of entry. Limit, 2min. Nomination, 10s; acceptance, 10s. Distance, 1 mile.

TROTting HANDICAP of 45sovs; second horse to receive 5sovs from the stake. For trotting horses only. Limit, 2min. 50sec. to the mile. Nomination, 15s; acceptance, 20s. Distance, 1 mile.

SUBURBAN TROT HANDICAP of 45 sovs; second horse to receive 10sovs from the stake. All horses will be handicapped to trot 2min. 42sec. or better to the mile. Nomination, 15s; acceptance, 20s. Distance, 2 miles.

EPSOM HANDICAP of 35sovs; second pony to receive 5sovs from the stake.

For ponies 14 hands 3 inches and under. Nomination 10s; acceptance, 20s. Distance, 5/4 furlongs.

CLASS TROT HANDICAP of 45sovs; second horse to receive 5sovs from the stake. All horses will be handicapped to trot 2min. 40sec. or better to the mile. Nomination, 15s; acceptance, 20s. Distance, 1 1/2 miles.

PANMURE TROT HANDICAP of 35 sovs; second horse to receive 5sovs from the stake. All horses will be handicapped to trot 2min. 50sec. or better to the mile. Nomination, 10s; acceptance, 20s. Distance, 1 1/2 miles.

FLYING STAKES HANDICAP of 35 sovs; second pony to receive 5sovs from the stake. For ponies 14 hands 3 inches and under. Nomination, 10s; acceptance, 20s. Distance, about 4 furlongs.

TELEPHONE TROT HANDICAP of 40 sovs; second horse to receive 5sovs from the stake. All horses will be handicapped to trot 2min 38sec. or better to the mile. Nomination, 10s; acceptance, 20s. Distance, 1 mile.

NOMINATIONS, HANDICAPS, AND ACCEPTANCES.

NOMINATIONS

For all events on both days close with the Secretary at his Office, Durham-street East, on **FRIDAY, 30th October, at 9 p.m.**

HANDICAPS

For all events on **FIRST DAY** declared on **TUESDAY, 3rd November, 1908.**
For all events on **SECOND DAY** declared on **MONDAY, 16th November, 1908.**

ACCEPTANCES

For all events on **FIRST DAY** close with the Secretary at his Office, Durham-street East, on **FRIDAY, 6th November, 1908, at 9 p.m.**
For all events on **SECOND DAY** close on **MONDAY, 16th November, 1908, at 9 p.m.**

CONDITIONS.

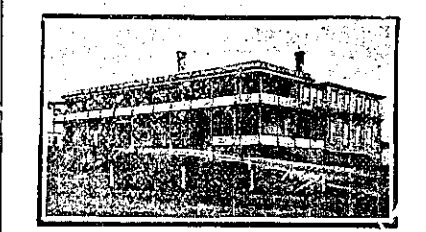
No pony shall be allowed to race under the Club unless a certificate of height has been previously obtained from a measurer appointed by the Club. Ponies may be measured with or without shoes, and may be re-measured at the pleasure of the Stewards. No protest or dispute will be allowed in regard to the height of any pony after being passed by the Club's Measurer or Measurers.

F. D. YONGE, Secretary.

SHOW Catalogues, Trade Price Lists, Receipt Books, Billheads, Order Forms, etc., etc.—ARTHUR CLEAVE AND CO., LTD., Vulcan Lane.

STAR HOTEL

TAURANGA.
JNO. HOGG .. PROPRIETOR.
FIRST-CLASS ACCOMMODATION FOR TRAVELLERS AND THE GENERAL PUBLIC.
BEST BRANDS WINES AND SPIRITS ONLY KEPT IN STOCK.



NATIONAL HOTEL, CAMBRIDGE.

The Best Appointed and Most Charmingly Situated Hotel in the district. Excellent Cuisine, First-class Billiard Table, Good Stable, First-class Sample Rooms.

J. WATTERS Proprietor.



WHEN VISITING TE KUITI

Please Remember that the **TE KUITI TEMPERANCE HOTEL**
H. E. KERR .. Proprietor
(Late J. T. Hetet)

Possesses three recommendations—First-class Table, Comfortable and Spacious Bedrooms, Good Sitting Rooms, Attention and Civility gratis.

MASONIC HOTEL, OPOTIKI.

Wines, Spirits, Ales and Cigars of the Best Brands only. Table a Specialty. Every attention. Speight's XXX always on draught. Commercial Sample Room. The Leading Commercial Hotel Bay of Plenty. Excellent Accommodation for Tourists, Travellers and Visitors. Telegraphic Address: "Mann."

G. H. MANN Proprietor

POST OFFICE HOTEL, FOXTON.

THE LEADING HOTEL OF "FLAXOPOLIS."
Coaches leave hotel for Shannon and Levin.

BEST OF WINES AND SPIRITS
SPEIGHT'S BEER.

GEO. GRAY Proprietor

GRAND HOTEL, HASTINGS.

THE FINEST AND MOST UP-TO-DATE HOTEL IN THE DOMINION.

ONLY THE BEST OF WINES AND SPIRITS KEPT IN STOCK.

NIGHT PORTER IN ATTENDANCE.

G. B. MACKAY,
PROPRIETOR.

Telephone, 114.
Cable: Grand, Hastings.



DRURY HOTEL, DRURY.

This Hotel is within easy distance from town, being only 22 miles by rail direct. There is splendid shooting and fishing in the district.
First-class Table. Moderate Tariff. Special arrangements for week-end parties.

MRS. H. DINGLE .. Proprietress.

UNDER THE PATRONAGE OF HIS EXCELLENCY THE GOVERNOR.

NOTICE TO THE GENERAL PUBLIC.

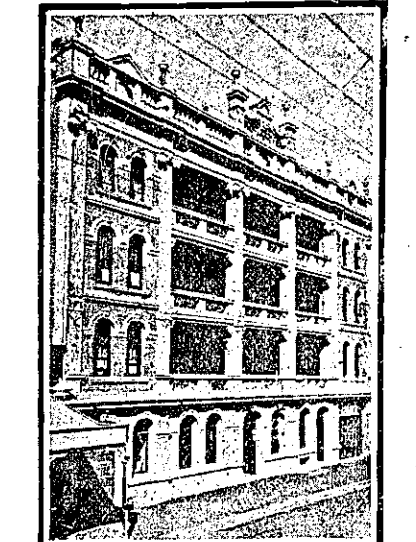
THE CENTRAL HOTEL, DARGAVILLE

(Close to Wharf and Railway Station).
Is now under the Management of **MR. H. H. DYER,**
And the Travelling Public will find it one of the most Convenient Houses in the District.

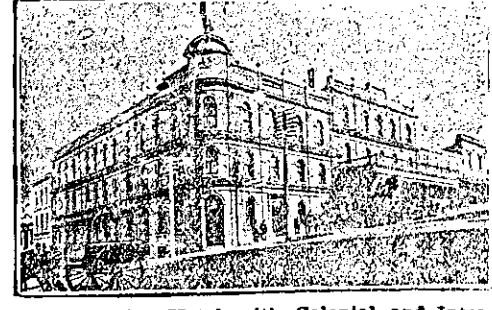
ALL ACCOMMODATION.
BEST BRANDS OF WINES AND SPIRITS.
Telegrams Promptly Attended To.

H. W. Alison, jun., (Ernest Alison).

ALISON AND ALISON, SOLICITORS,
WRIGHT'S BUILDINGS,
17 FORT-STREET, AUCKLAND



THE ROYAL HOTEL, VICTORIA STREET, AUCKLAND.



Is the largest Hotel in the City, having 75 Bedrooms, 15 Bath-rooms (including douche and needle baths).

It has also the finest CORRIDOR of any Hotel in the Colony, elaborately furnished as a LOUNGE.

Most Popular Hotel with Colonial and Inter-colonial Travellers. Every convenience and comfort found in a Modern Hotel.

Terms, from 9s per Diem.

W. WOOLWARD,
Proprietor.