

NEW ZEALAND HOTEL DIRECTORY—(CONTINUED). — PATRONISED BY HORSEMEN, CYCLISTS, MOTORISTS, SPORTSMEN, COMMERCIAL TRAVELLERS AND THE THEATRICAL PROFESSION.

KARANGAHAKE.—Continued.



TRAMWAY HOTEL, KARANGAHAKE (Across the Bridge).

This is a New and Up-to-date Hotel, having recently been re-erected. First-class Ales and Spirits. Hot and Cold Baths and Every Convenience.

MRS. K. CROSBY, Proprietress.

KAUKAPAKAPA.



BRIDGE HOTEL, KAUKAPAKAPA.

WALTER DYER Proprietor.

Excellent Accommodation for Travel-
lers and Visitors.
Billiard Room.

KIHIKIHI.

STAR HOTEL, KIHIKIHI.

FREDERICK HENWOOD .. Proprietor

FIRST-CLASS ACCOMMODATION.

ONLY BEST BRANDS OF ALES,
WINES AND SPIRITS STOCKED.

MACKAYTOWN.

MACKAYTOWN HOTEL,

MACKAYTOWN.

J. QUINN Proprietor.

First Class Accommodation for the
Travelling Public.
Best Brands Wine and Spirits only in
Stock.

MANGONUI.



**THE MANGONUI HOTEL MANGO-
NUI.**

THOS. WEBB Proprietor.

T.W. begs to inform the Settlers of
the North generally, and all Visitors to
Mangonui, that he has taken over the
New and Commodious Hostelery, near
the Wharf, and trusts by strict atten-
tion to Business and Civility, to meet all
demands. A GOOD TABLE KEPT.
None but the best of Liquors, Beers,
etc., kept in stock, and on Draught.

KAITAIA HOTEL, KAITAIA.

MANGONUI.

C. F. MOLLOY (Brother of Jos. Mol-
loy, Albion Hotel, Hobson-street, Auck-
land), Proprietor of the above old and
well-established Hostelery, begs to in-
form the Travelling Public that every
Accommodation is now afforded. Stables,
Paddocks, and Plenty of Feed for Horse
and Owner. The Best of Wines, Spirits
and Beers.

MARTON.

CLUB HOTEL, MARTON.

R. J. WALTERS Proprietor.

First-class Accommodation for Visi-
tors and the Travelling Public.
Only the Best Brands of Ales, Wines
and Spirits kept.
First-class Billiard Room.

RAILWAY HOTEL, MARTON JUNCTION,
(Right Opposite the Station).

All Trains stop ample time for Re-
freshments. All Wines and Spirits guar-
anteed. The very best Table kept.

ARTHUR PATERSON.
Proprietor.

MARTON.—Continued.

MARTON HOTEL, MARTON.

J. A. PAWSON Proprietor.
Mr. Pawson begs to intimate that he
has taken over the above Hotel, and the
travelling public can rely on First-class
Accommodation at a moderate tariff.
Only the Best of Ales, Wines, and
Spirits kept.
Tariff: 4s 6d per Day.

MANGAWEKA.



ANGHOLM HOTEL MANGAWEKA.

First-class Accommodation for the
Travelling Public.
Only the Best Wines, Ales and
Spirits kept.
Telegrams receive prompt attention.

G. F. BONNOR Proprietor.

MASTERTON.



CENTRAL HOTEL, MASTERTON.

MR. F. S. COOPER, late of the Em-
pire Hotel, Hawera, and formerly of
Wellington, wishes to inform the Tra-
velling Public that he has taken over
the above well-known house. This
hotel offers superior accommodation to
travellers, and is a First-class Family
Residence in every respect. The rooms
are well ventilated, lofty, and comfort-
ably furnished.

Good Table, Best of Wines, Ales, etc.
Telegrams and Letters will receive
prompt attention.

F. S. COOPER Proprietor.

**CLUB HOTEL, QUEEN-STREET,
MASTERTON.**

Patronised by The Earl
His of
Excellency Ranfurly.

Now under the Management of
TOM PORTER,
(Late Manager Royal Oak Hotel,
Wellington).

Having made arrangements for the
use of Sample Rooms, which are ad-
jacent to the Club, Travellers can rely
on being accommodated by wiring for
Sample Rooms. Nothing but Staples
and Co.'s Beer sold.

TOM PORTER Proprietor.

MERCER.

RAILWAY HOTEL, MERCER.

First-class Accommodation for Tour-
ists and Travellers.
Wines and Spirits of the best brands
only kept in stock.

M. GALLERY Proprietor.

MORRINSVILLE.

**NOTTINGHAM CASTLE HOTEL,
MORRINSVILLE.**

(Five Minutes from Railway Station).

JAS. GANLEY Proprietor.

This Hotel has recently been reno-
vated and many additions made.

First-class Accommodation for the
Travelling Public. Meals at all hours.
Wines and Spirits of Best Brands only.

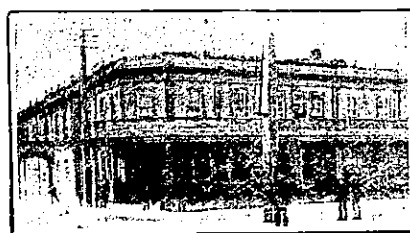
NAPIER.

FUSZARD'S BERNHILL HOTEL,

MIDWAY BETWEEN NAPIER
AND HASTINGS.

EVERY ATTENTION TO THE TRA-
VELLING PUBLIC.
EVERYTHING OF THE BEST.

WINTER FUSZARD .. Proprietor.



**CRITERION HOTEL,
HASTINGS-ST., NAPIER.**

An Up-to-date Hotel with every Mod-
ern Convenience.
New Commercial Sample Rooms.
PERCY MARTIN .. Manager
(Late Railway Hotel, Hastings).

NAPIER.—Continued.

ROYAL HOTEL,

CARLYLE-STREET, NAPIER
(Right opposite Recreation Ground).

GEO. H. GILDING Proprietor.



EMPIRE HOTEL, NAPIER.

(Close to Post Office).

22 Bedrooms, Commercial Room, Sit-
ting Rooms, Study, etc. Hot, Cold,
and Shower Baths. Tam-o-Shanter
and Oban Whisky. Speight's and Man-
ning's Ales. Tariff, 6s per Jay; 15s
per week.

JOHN BURRIDGE Proprietor.
(For 22 years manager of Hawke's Bay
Club).

SIMPSON'S

**CENTRAL HOTEL,
EMERSON-STREET, NAPIER.**

Now prepared to receive the Travel-
ling Public. First-class Accommoda-
tion. Beer, Wine, and Spirits guaran-
teed of the best.

CLUB HOTEL, DANNEVIRKE.

J. RALLIGAN Proprietor.

This Well-known Establishment,
which adjoins Dannevirke Railway Sta-
tion, offers unsurpassed Accommoda-
tion to Travellers and the General
Public.

ONLY BEST QUALITIES OF ALES,
WINES, AND SPIRITS STOCKED.

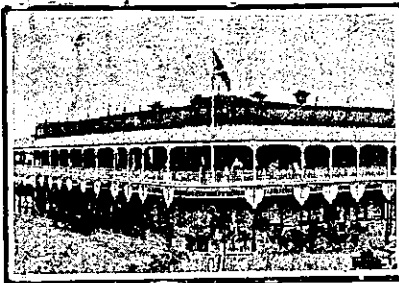
NELSON.

MASONIC HOTEL, NELSON
CHANGE OF OWNERSHIP.

This long-established Hotel, which
has always been the Headquarters in
Nelson for Tourists and Commercial
Travellers, has recently been pur-
chased by Mr. H. Bulgent.

The Hotel has been thoroughly Ren-
ovated, and all the Rooms are being Re-
fitted in modern style. No effort will
be spared to make all visitors thor-
oughly comfortable.

NEW PLYMOUTH.

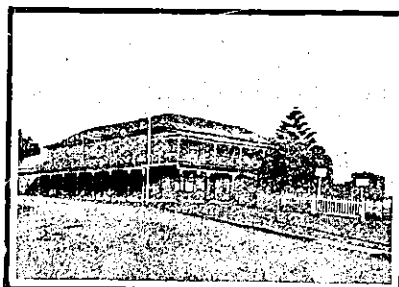


**WHITE HART HOTEL opposite
Post and Telegraph Government
Offices, NEW PLYMOUTH.**

C. CLARKE Proprietor.

P.O. Box 30. Telephone 48.

The above well-known Hostelery is the
appointed house for the Commercial
Travellers' Association. Only the best
brands of Wines and Spirits. Speight's
Dunedin Ale always on draught. First-
class Accommodation for Tourists, Tra-
vellers, and Families.



**TERMINUS HOTEL,
NEW PLYMOUTH.**

The above Hotel is situated on the
Beach, opposite Railway Station, and
one minute from Post Office. Beauti-
ful gardens attached to hotel overlook-
ing the sea, and guests may rely on re-
ceiving the very best attention.
Best Brands of Wines and Spirits
kept. Speight's Dunedin Beer on tap.

TERMINUS HOTEL COMPANY, LTD.,
F. FOSTER, Manager.

NEW PLYMOUTH.—Continued.

**BREAKWATER HOTEL,
MOTUROA, NEW PLYMOUTH.**

Situated three minutes' walk from
the Wharf. Only the best of Ales,
Wines and Spirits kept. Excellent Ac-
commodation and Good Fishing.
Telephone, 152.

TOMMY KNOWLES .. Proprietor.

OPOTIKI.

MASONIC HOTEL, OPOTIKI.

Wines, Spirits, Ales and Cigars of the
Best Brands only. Table a Specialty.
Every attention. Speight's XXX al-
ways on draught. Commercial Sample
Room. The Leading Commercial Hotel
Bay of Plenty. Excellent Accommoda-
tion for Tourists, Travellers and Visi-
tors. Telegraphic Address: "Mann,"
Opotiki.

G. H. MANN Proprietor

OTAKI.

THE TELEGRAPH HOTEL,

OTAKI.

JAS. WOODS Proprietor.

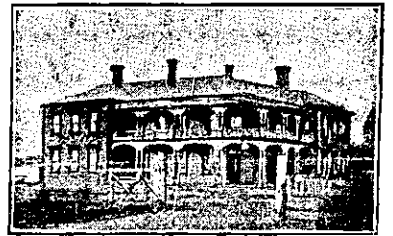
This New Hostelery is now open to the
public, and the Proprietor will be pleas-
ed to greet old friends and new at the
Hotel.

The whole of the Furniture, Fittings,
etc., are absolutely New and Up-to-
Date, and Customers may rely on re-
ceiving the best of attention, and most
comfortable apartments at the Tele-
graph.

ALL LIQUORS OF THE BEST
BRANDS.

JAMES WOODS.

PAEROA.



PAEROA HOTEL, PAEROA.

Directly opposite Railway Station
and Nearest Hotel to Steamers
to and from Auckland.
This New and Commodious Hotel is
replete with every Modern Convenience
for the Travelling Public.

FIRST-CLASS CUISINE.
Hot, Cold, and Shower Baths.
Terms moderate.

E. F. MORIARTY

(Late of Northern Wairoa), Proprietor.



COMMERCIAL HOTEL PAEROA

J. H. MOORE Proprietor.

First-class Accommodation for Tra-
vellers and Tourists. Cheapest Rates
in the district, 4s 6d per day, and Cui-
sine cannot be surpassed. Wines and
Spirits of the Best Brands only kept in
Stock. Coaches pass the door for all
surrounding districts.

PALMERSTON NORTH.

**GRAND HOTEL,
PALMERSTON NORTH.**

MARTIN CREAVERN .. Proprietor.

The finest and most up-to-date Hotel
in New Zealand, and equal to many
grand Continental Hotels, being most
elaborately furnished. Tourists and
Travellers can rely on getting the best
attention. All the best-known brands
of Wines, Liquors, Spirits, Ales, etc., in
stock.

ONLY WHITE SERVANTS EMPLOY-
ED IN THE GRAND HOTEL.

MARK O'MALLEY (late Masonic
Hotel, Napier), MANAGER.

**CAFE DE PARIS HOTEL, PALMERS-
TON NORTH.**

MRS. J. ADAMS .. Proprietress.
(Late of Marquis of Normanby Hotel,
Carterton).

Opposite Railway Station. Travel-
lers may rely on catching early trains.
Speight's Beer.