

NEW ZEALAND HOTEL DIRECTORY—(CONTINUED). — PATRONISED BY HORSEMEN, CYCLISTS, MOTORISTS, SPORTSMEN, COMMERCIAL TRAVELLERS AND THE THEATRICAL PROFESSION.

AUCKLAND.—Continued.

NAVAL AND FAMILY HOTEL.
CORNER OF PITT-STREET AND KARANGAHAPE RD., AUCKLAND.

D. NORDEN, for many years proprietor of the Prince Arthur Hotel, desires to intimate to his many friends and the public that he has again taken possession of the above Popular House, where he will be pleased to afford every comfort and convenience to Patrons.
The House, which has been renovated throughout, is situated on one of the most elevated sites in the city, commanding a splendid view, and is within five minutes' journey from Wharf and Railway Station.

TARIFF: FIVE SHILLINGS PER DAY. TRAMS PASS THE DOOR.



JUNCTION HOTEL, EPSOM.

Buses and trams pass here on their way to and from Ellerslie Racecourse and Alexandra Park Football Ground.

WINES, SPIRITS AND BEERS—BEST ONLY.

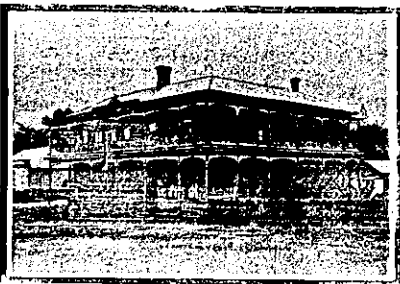
Give me a Call—
J. COTTERALL Proprietor.



ST. HELIER'S BAY HOTEL.

Sea-bathing and Fishing. Within one hour's drive of Auckland. Special Terms Offered to Week-end Visitors. Telephone. Catering for Dinners or Suppers, Club or Private, guaranteed. Afternoon Tea supplied to driving or boating parties. Perfect Service. Most Moderate Charges.

W. H. G. WRATHALL,
Proprietor and Licensee.



HARP OF ELLERSLIE HOTEL.

MRS. WRIGHT Proprietress.

The Proprietress begs to intimate that the new house, which has been erected according to the most modern designs, and is replete with all the latest improvements, is now open for the Accommodation of the Public. The stock of Liquors, etc., has been selected with care, and will be found to be of the very best. Excellent Stabling. Loose Boxes, etc.

PRINCE OF WALES' HOTEL.
HOBSON-ST., AUCKLAND.

H. S. BOOKER Proprietor
(Late of Lake Hotel, Takapuna).

Every home comfort for visitors. Billiards, Billiards, Campbell and Ehrenfried's XXXX Prize Ale on draught. The best brands of Wines and Spirits.

QUEEN'S FERRY HOTEL.

VULCAN LANE,
AUCKLAND.

T. MARKWICK

Begs to notify that he has taken over the above favourite Hostelry.

His trade principle is to keep nothing but the very best, and to aim at the comfort of his Patrons.

ALBERT HOTEL.

QUEEN-STREET, AUCKLAND.

COMMERCIAL AND FAMILY HOTEL
AND TOURISTS' RESORT.

BEST WINES AND SPIRITS

PERCY J. DELANEY

Proprietor.

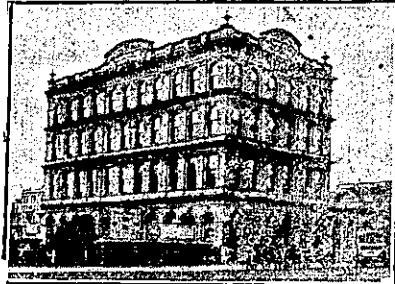
AUCKLAND.—Continued.



MANUKAU HOTEL, ONEHUNGA.

This Hotel is directly situated opposite the Onehunga Wharf, and is therefore specially adapted for Travellers, either leaving or arriving, from Wellington and the South, via New Plymouth.

Good Accommodation and Table. Only Best Brands Wines and Spirits kept.
W. J. BREWIN Proprietor.



WAVERLEY HOTEL.
QUEEN-STREET, AUCKLAND.

Near Railway Station, Tram Terminus, the Wharf, and Bus Stands.

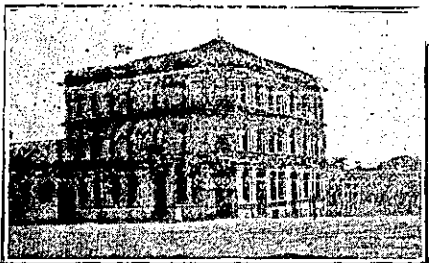
First-class Table d'Hote. Conveyance meets Steamers and Trains. Tariff: 7s per day; £2 2s per week. Telephone 370.

This Hotel has a beautiful view of the Harbour.

MAURICE O'CONNOR Proprietor

RISING SUN HOTEL.
KARANGAHAPE ROAD.

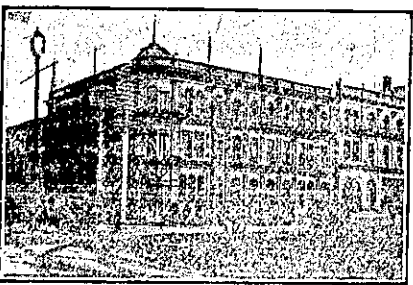
J. McKEANE, so long and favourably known at Panmure in connection with hotel-keeping, wishes to announce that he has taken over the Rising Sun Hotel, Karangahape Road, where he hopes to see all his old and new friends who may pass his way. Superior Accommodation for Boarders. Telephone 1717.



CITY HOTEL, Corner of VICTORIA & HOBSON STS., AUCKLAND.

WALTER STIMPSON
(Late of the Queen's Ferry),
Will be glad to welcome Old and New Friends at the above Popular House.

The Wines, Spirits, Ales and Cuisine will be found to be unexceptionable, while the Accommodation is thoroughly modern.



WAITEMATA HOTEL, Cor. QUEEN & CUSTOM STS., Auckland.
Close to the Wharf and Railway Station.

VISITORS WILL FIND EVERY COMFORT AND CONVENIENCE.

JOHN ENDEAN Proprietor.
Telephone 589.

(Established 1868.)

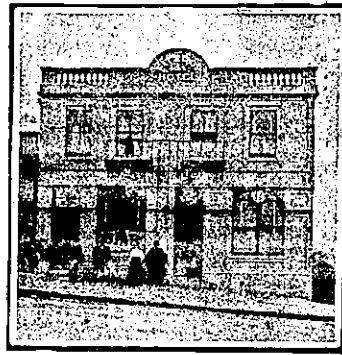
J. M. & J. MOWBRAY

STOCK AND SHAREBROKERS,
HOUSE, LAND, & ESTATE AGENTS,
HOTEL BROKERS & VALUATORS.

22, SHORTLAND STREET

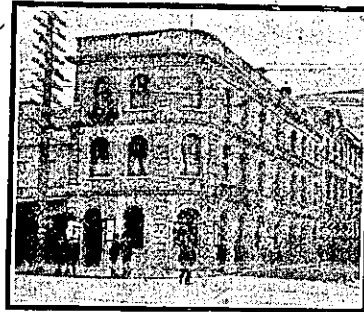
(Next "Star" Office.)

AUCKLAND.—Continued.



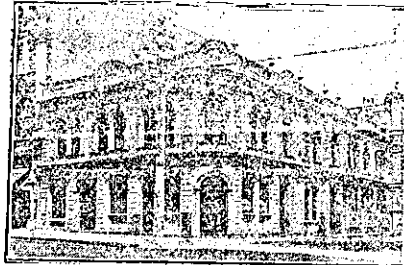
FITZROY HOTEL, WAKEFIELD-STREET, AUCKLAND.

J. A. DOUGLAS Proprietor,
Wishes to inform his old friends that he has taken over the above Hotel, and would be glad to renew their acquaintance when visiting town.
Good Accommodation. Only Best Wines and Spirits kept.



BRITISH HOTEL, CORNER OF DURHAM AND QUEEN STREETS.

J. H. PAGNI (late Western and Oriental Hotels, Wellington), begs to invite all his friends and general public to inspect the new improvements at the above Hotel, which is now the most comfortable and up-to-date in Auckland. Visitors will find first-class accommodation. Nothing but the Best and Most Reliable Brands of Spirits, Wines, and Beer and Stout kept in stock. New Saloon Bar now open.



THISTLE HOTEL.
QUEEN-STREET, AUCKLAND.

MR. BOB NOTON has now taken over the Management of the above Hotel, which has been thoroughly renovated throughout.

A Few Doors above the City Chambers.

BOB NOTON Proprietor.

AWANUI.

THE COMMERCIAL HOTEL.
WAIAPAKAURI, AWANUI.

GOOD ACCOMMODATION FOR TRAVELLERS AND THEIR BEASTS OF BURDEN.

THE BEST OF WINES, SPIRITS, AND BEERS ONLY.

FAIR DEALS—GOOD MEALS.

JOSEPH EVANS, SEN.

PROPRIETOR.

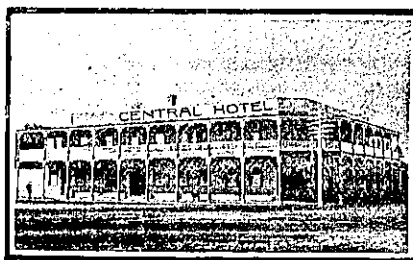
AWANUI HOTEL.

NEIL McLEOD Proprietor.

FIRST-CLASS ACCOMMODATION.

ONLY THE BEST OF LIQUORS STOCKED.

CAMBRIDGE.



CENTRAL HOTEL, CAMBRIDGE.

A. UNDERWOOD .. Proprietor.

First-class Accommodation for the Travelling Public.
Only the Best Brands of Ales, Wines and Spirits kept.

TERMS MODERATE.

CHRISTCHURCH.

DOMINION HOTEL

Gloucester St., Christchurch
(Opposite New Theatre Royal).

The Hotel has been thoroughly Renovated and Restored.

*Lighted throughout with Electricity.

Entirely under New Management.
Complete New Staff of Assistants.

Night Porter in attendance.

Tariff Moderate.
Special Tariff for Theatricals.
Letters and Telegrams promptly attended to.

E. E. DANIELS,

(Late Manager Warner's Ltd.)

PROPRIETOR

STAR AND GARTER HOTEL, CHRISTCHURCH.

Corner Barbadoes-street and Oxford Terrace.

PAUL B. FLOOD ... Proprietor.

Everything First-class, and Ales, Wines and Spirits are of the Highest Order.

THE GLADSTONE HOTEL.
Off Papanui Road, CHRISTCHURCH.

AN UP-TO-DATE HOUSE.

Excellent Accommodation. Liquors of Special Quality and Great Variety. Manning's Ales on Draught.

H. PIPER Proprietor.



LYTTELTON HOTEL, LYTTELTON.

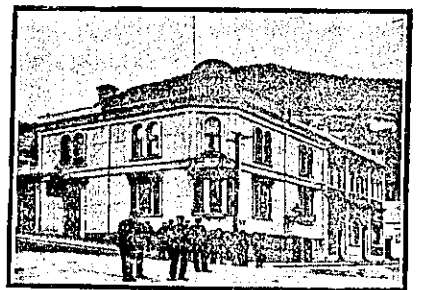
(Under new management). The above Hotel has been renovated throughout, and now offers Accommodation second to none in Lyttelton. Cuisine under the personal supervision of Mrs. Hartshorn. Hot and Cold Water Baths. Best Brands of Ales, Wines, and Spirits. Excellent Billiard Table. Tariff Moderate.

Wm. HARTSHORN, Proprietor.

EMPIRE HOTEL, LONDON-STREET, LYTTELTON.

J. McCONCHIE Proprietor
(Late of Kalkora)

Having taken over this fine Hotel, the Proprietor is prepared to give Visitors and the Travelling Public entire satisfaction.



BRITISH HOTEL, LYTTELTON

One Minute from Wharf, Railway Station and Post Office.

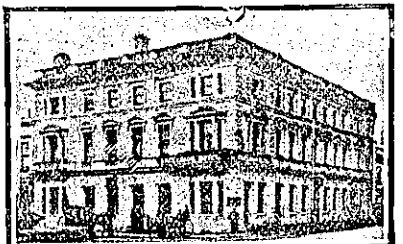
DANIEL J. KELLEHER .. Proprietor.

This Well-known House has been enlarged to twice its original size, and Mr. Kelleher guarantees Visitors and the Travelling Public to receive the best attention.

Dunedin Ales. Wines and Spirits guaranteed.

Absolutely the best Billiard Room in New Zealand.

Tariff: 6s 6d per day; 35s per week.



THE EXCELSIOR HOTEL.
(Opp. Clock Tower),
CHRISTCHURCH, N.Z.

TARIFF FROM 6s A DAY.

SPECIAL TERMS FOR THEATRICALS

Tel 1088.

Box 599.

A. R. ROWSE Proprietress.