

**PHIL MARSH
AND CO.,**
TURF COMMISSION
AGENTS,
WELLINGTON.

Postal Address: BOX 773.

Telegraphic Address:

MARSH, Wellington.



CRITERION HOTEL
ALBERT-ST., AUCKLAND.

COMMERCIAL AND FAMILY HOTEL
(NEWLY RENOVATED).

EXCELLENT WINES AND SPIRITS.
Best Accommodation for Tourists.

D. J. MORRISON Proprietor

GEDDES AND ERICKSON
Late

H. BRANT AND CO.,
MARINE STOREMEN
MAJOR PLACE, DUNEDIN.

HIGHEST PRICES GIVEN FOR ROPE
ZINC WOOLPACKS, ETC.

CITY CATERING COMPANY.

CORNER VULCAN LANE AND
HIGH STREETS.

MANSON AND GORMAN,
Proprietors.

LISTEN FOR THE BUGLE.
Breakfast 6d, Dinner 8d, Tea 6d.
Cleanliness, Civility, and Smart
Attention.

We Print

- Ledger or Account Books
- Memorandums
- Invoices Cards
- Prize Tickets for Shows
- Concert Programmes
- &c. &c.

Arthur Cleave & Co.,
LIMITED.

Vulcan Lane, Auckland.



METROPOLITAN HOTEL
QUEEN-STREET, AUCKLAND.

J. MORRISON PROPRIETOR.

The new Proprietor has much pleasure in announcing that this popular House has been thoroughly renovated and re-furnished throughout, and now offers accommodation equal to any other in the colony. Entirely New Stock of Wines, Spirits, and Ales have been laid down, and the Cuisine is unexcelled.

International Exhibition,
CHRISTCHURCH,
1906 - 1907.

The following **HIGH-CLASS MILLED, DESICCATED and DELICATELY PERFUMED,**

**LONDON MADE
TOILET SOAPS**

Were exhibited by the Manufacturers:

PRICE'S PATENT CANDLE CO. LTD.,
(LONDON & LIVERPOOL)

"REGINA,"

"REGINA CREAM," "REGINA VIOLET,"

"COURT," "BUTTERMILK,"

"PALMITINE BATH," "GLYCERIN CREAM."

These Soaps may be obtained through any **CHEMIST or STOREKEEPER.** Wholesale in

AUCKLAND,
CHRISTCHURCH,
DUNEDIN,
INVERCARGILL,
&c.

NAPIER,
NELSON,
NEW PLYMOUTH,
WELLINGTON,
&c.

The Company also showed specimens of their leading brands of

CANDLES, NIGHT LIGHTS, GLYCERIN,

And of their Celebrated:-

"GAS ENGINE OILS,"
MOTOR OILS AND LUBRICANTS.

61 HONOURS AND AWARDS.

HOTELS FOR SALE

DWAN BROS.,

HOTEL BROKERS, VALUERS, AND FINANCIERS,

WILLIS STREET, WELLINGTON
(Established 1880).

HOTEL—Rent, £2 15s. Price, £750
HOTEL—Rent, £5 8s; trade, £80 to £90. Price, £2200. **HOTEL** (Manawatu)—Rent, £4. Price, £2250. **HOTEL** (Wellington)—Five years' lease. Price, £5500. **BRICK HOTEL** (Wellington)—Trade over £200 weekly. Elegantly furnished. **HOTEL** (Wairarapa)—Trade about £130 weekly. Price, £2500. **HOTEL** (Rangitikei)—Rent, £4. Price, £2200. **HOTEL** (Wairarapa)—Seven years' lease. Price, £3000. **HOTEL** (Christchurch)—Price, £1500. **HOTEL** (Wairarapa)—Price, £1800.

DWAN BROS.

Y Have Dirty HANDS

When we can supply your Office or Shop with

2 Clean Towels and Soap Weekly FOR 6d.

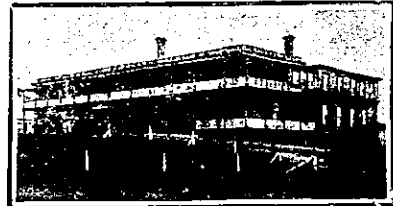
Auckland Office and Shop Toilet Co.
AUCKLAND CHAMBERS, HIGH ST.

CENTRAL HOTEL
TAURANGA.

JNO. HOGG .. PROPRIETOR.

FIRST-CLASS ACCOMMODATION FOR TRAVELLERS AND THE GENERAL PUBLIC.

BEST BRANDS WINES AND SPIRITS ONLY KEPT IN STOCK.



NATIONAL HOTEL, CAMBRIDGE.

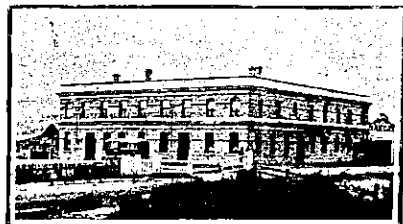
The Best Appointed and Most Charming Situation Hotel in the district. Excellent Cuisine. First-class Billiard Table. Good Stable. First-class Sample Rooms.

J. WATTERS Proprietor.



WAIPA HOTEL, NGARUAWAHIA.

DRAFFIN, having taken over the ABOVE WELL-KNOWN HOTEL, Wishes to remind his Friends and the General Public that he still maintains his reputation for keeping the very Best Brands of Ales and Spirits procurable. Train stops within a few yards of the Hotel, and Cleanliness, Comfort, and Civility await all those who may favour him with a call.



TERMINUS HOTEL, HELENVILLE.

J. A. McLEOD Proprietor.

It is most conveniently situated to the Helensville main railway station and wharves. Bus runs twice daily from Hotel to Hot Springs.

A good Billiard Table, Sample, and Committee Rooms.

STABLING.



DRURY HOTEL, DRURY.

This Hotel is within easy distance from town, being only 22 miles by rail direct. There is splendid shooting and fishing in the district.

First-class Table. Moderate Tariff. Special arrangements for week-end parties.

MRS. H. DINGLE .. Proprietress.

UNDER THE PATRONAGE OF HIS EXCELLENCY THE GOVERNOR.

NOTICE TO THE GENERAL PUBLIC.

THE CENTRAL HOTEL
DARGAVILLE

(Close to Wharf and Railway Station).

Is now under the Management of MR. H. H. DYER.

And the Travelling Public will find it one of the most Convenient Houses in the District.

At ACCOMMODATION.

BEST BRANDS OF WINES AND SPIRITS.

Telegrams Promptly Attended To.

W. Alison, jun.; (Ernest Alison)

ALISON AND ALISON,
SOLICITORS,
WRIGHT'S BUILDINGS,
17 FORT-STREET, AUCKLAND

ASK FOR, and See that you get ONLY

**Speight's
Dunedin
Ales**

Sole Agents and Bottlers

for AUCKLAND

HIPKINS & COUTTS,

CUSTOM STREET EAST.