

NEW ZEALAND HOTEL DIRECTORY—(CONTINUED). — PATRONISED BY HORSEMEN, CYCLISTS, MOTORISTS, SPORTSMEN, COMMERCIAL TRAVELLERS, AND THE THEATRICAL PROFESSION.

WANGANUI.



Established 1857.  
Tel. No. 46. P.O. Box No. 54.  
FITTED THROUGHOUT  
WITH ELECTRIC LIGHT

**FOSTER'S HOTEL,**  
Nearly opposite Town Bridge,  
TAUPO QUAY, WANGANUI.

J. R. FOSTER, Proprietor,  
Within Three Minutes of  
Railway Station and River  
Tourist Steamers.



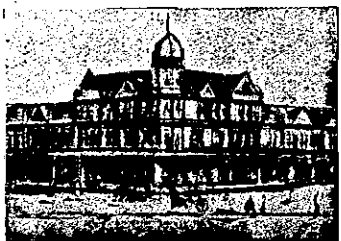
**PROVINCIAL HOTEL, WANGANUI.**  
FIRST-CLASS ACCOMMODATION  
FOR THE TRAVELLING PUBLIC.  
ONLY THE BEST OF ALES, WINES,  
AND SPIRITS KEPT IN STOCK.

W. TUCK ..... Proprietor.

**COMMERCIAL HOTEL,**  
WANGANUI.

A. SUMMERS ..... Proprietor.

First-class Accommodation for the  
Travelling Public.  
Wines and Spirits of the Best Brands  
only kept in stock.



**RUTLAND HOTEL, WANGANUI**

F. C. FABER ..... Proprietor.

THE HOME OF THE TOURIST.

The above Hotel has just been rebuilt  
and newly furnished throughout in an  
up-to-date style. The reading, writ-  
ing and smoke rooms are replete with  
every convenience. The greatest care  
is taken to maintain a reputation for  
home comfort. Dark room for photo-  
graphers.

**THE PARKVILLE PRIVATE  
HOTEL,**

RIDGWAY STREET,  
WANGANUI.

Near Main Entrance to Cook's Gardens.

NEW AND UP-TO-DATE.

Specially adapted for the Convenience  
and Comfort of the Travelling Public.  
Beautiful Healthy Locality. One  
minute's walk from Railway Station  
and Post Office.

Hot and Cold Baths.  
Commercial and Sitting Rooms, also  
Writing Room for use of Patrons.

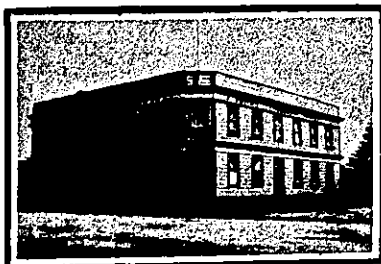
J. HODSON, Proprietor.  
Telephone 505.  
Telegrams and Correspondence at-  
tended to.

WAVERLEY.

**CLARENDON HOTEL, WAVERLEY.**

MR. G. W. OAKENFULL

Begs to inform the travelling public  
and residents of Waverley that he has  
taken over the Clarendon Hotel. He  
hopes that with strict attention to the  
comfort of his guests, a good table, and  
the best of Ales, Wines, Spirits, etc.,  
to be favoured with their patronage.



**COMMERCIAL HOTEL, WAVERLEY**

The recognised House for Commer-  
cials and Tourists.  
Patrons will receive all Home Com-  
forts.

Letters and Telegrams promptly at-  
tended to.

Speight's Dunedin Beer on Tap.  
JAMES SMITH ..... Proprietor.  
(Late Manager Pitcaithly and Co.,  
Wellington).

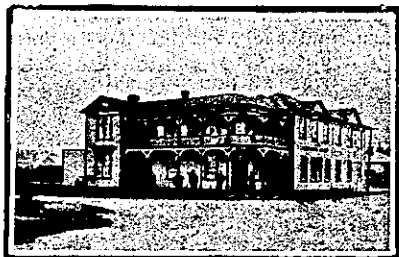
COFFEE PALACE

Opposite Railway Station, Wanganui.

This well-known House is easily got  
at from the Railway Station, and Fam-  
ilies and the General Public will find  
every Comfort and Convenience. Terms  
Moderate.

MISS DOBLE .. Proprietress.

WOODVILLE.



**COMMERCIAL HOTEL, WOODVILLE.**  
(Two minutes walk from Railway  
Station).

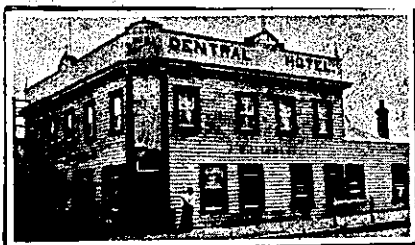
C. BALCOMBE ..... Proprietor.

This Hotel is now thoroughly com-  
plete, and is one of the best appointed  
houses along the line. All trains stop  
in time for refreshments. Breakfast  
ready for early trains. Night Porter  
in attendance. First-class Luncheon  
from 12 noon till 2.30 p.m., 1s.

**LAING'S MASONIC HOTEL.**  
WOODVILLE.

Excellent Accommodation for the  
Travelling Public at a Moderate Tariff.  
Best Wines Spirits, Ales, etc Good  
Billiard Table.  
Ample Stabling and Paddocking.  
Coaches run twice daily to Shannon.

ANDREW LAING (late of Foxton)  
Proprietor.



**CENTRAL HOTEL, WOODVILLE.**  
HAWKE'S BAY.

J. BOTTOMLEY .. Proprietor.  
J.E. would remind all old friends and  
the travelling public generally that he  
is still conducting the above hotel. The  
Central is suitably adapted for visitors  
to Woodville on account of its central  
position, and its prestige for Good Ac-  
commodation and Quality of Liquors  
and Ales is established.

**POST OFFICE HOTEL,**

(Corner Vogel and Ross Streets)  
WOODVILLE  
(Next Post Office).

J. W. ROBINSON .... Proprietor.  
Late of Prince of Wales, Wellington.

Under New Management, and every-  
thing of the Choicest.

WINES AND SPIRITS OF BEST  
BRANDS.

STAPLE'S BEER.

WELLINGTON.

**FAMILY HOTEL, LOWER HUTT.**

JOHN YOUNG .. Proprietor.

This hotel offers accommodation sec-  
ond to none in the district. Central po-  
sition and close to the Post Office.

Billiards, Excellent Table, and Best  
Brands of Wines and Spirits. Only  
Speight's Beer drawn.  
Good Stabling and Commodious Loose  
Boxes.

FOR Mutual Advantage, please men-  
tion this paper when communicat-  
ing with our Advertisers.

WELLINGTON.—Continued.

WHEN VISITING  
WELLINGTON,  
STAY AT  
THE

**ALBERT HOTEL**  
Which  
has recently been  
Re-furnished from ceiling  
to ceiling, and possesses  
every modern convenience  
Letters and telegrams  
will receive prompt attention.  
T. G. ASHMAN, Proprietor.

**OCCIDENTAL HOTEL,** Lambton  
Quay, Wellington.

I beg to announce that I have taken  
over this well-known Hotel, and altera-  
tions and improvements are now in  
hand which will again make the Occi-  
dental the Leading House of the City.  
The house is being completely renov-  
ated and put in thorough order. Daily  
Lunch will be a speciality

JOHN H. FAIRBAIRN .. Proprietor.

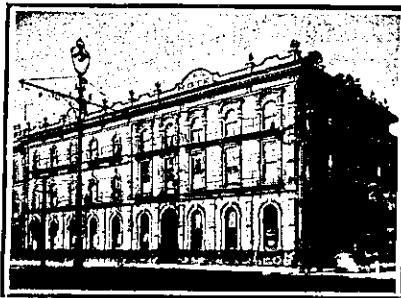
**PROVINCIAL HOTEL,**  
UPPER HUTT.

CONTAINING OVER FIFTY ROOMS.  
Replete with Every Modern Convenience.  
FIRST-CLASS ACCOMMODATION  
FOR TOURISTS, TRAVELLERS, &c.  
Treat-Fishing Streams Within Short  
Distance of Hotel.

FIRST-CLASS LOOSE BOXES

ATTACHED TO THE PREMISES.

CHAS. H. WILLIAMS,  
Proprietor.



**CLUB HOTEL,**

LAMBTON QUAY, WELLINGTON.  
PROPRIETOR: E. WILSON  
(Late of Post Office Hotel).

The Favourite Hotel for Country  
Gentlemen, Tourists and Travellers.  
Good Table and very Best Wines and  
Spirits.

SPEIGHT'S BEER ON TAP  
Letters and Telegrams promptly at-  
tended to.

Night Porter in Attendance.



**THE PALACE HOTEL, WILLIS-  
STREET.**

Wellington's Most Comfortable Hos-  
telery. Magnificently Furnished. Re-  
plete with Every Modern Convenience.  
Electric Light Throughout. Perfect  
Cuisine. Now under the Management  
of A. W. HARRISON. Communica-  
tions promptly replied to. Telephone  
868.

WESTPORT.



**GRAND HOTEL**

PALMERSTON-STREET

WESTPORT.

DAVID LEECH ..... Proprietor

Printed and Published by Arthur Cleave,  
Office, Vulcan Lane, Auckland, for  
THURSDAY, JULY 2, 1908.

WELLINGTON.—Continued.

**THE EMPIRE HOTEL.**

(LIMITED)

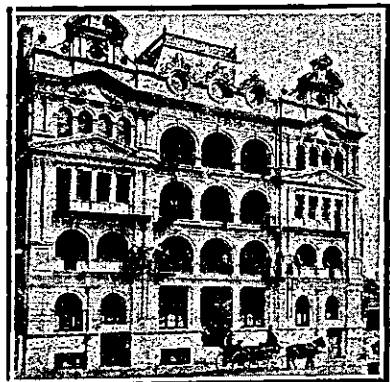
THE LEADING & MOST CENTRAL  
HOTEL IN WELLINGTON.



**BARRETT'S HOTEL,**  
LAMBTON QUAY, WELLINGTON.  
(Op. Bank of New Zealand).

Newly Built in Brick. Over 70  
Rooms. All Modern Conveniences.  
Close to Wharf and Post Office. Ex-  
cellent Table. Day and Night Porters.  
Tariff 7s per day, weekly by arrange-  
ment. Letters and Telegrams receive  
prompt attention. Phone 1076.

A. M. GOW .. Proprietor.



**HOTEL ARCADIA,**  
WELLINGTON.

Most Up-to-date Private Hotel in the  
Colonies. Smoking Rooms, Writing  
Rooms, Drawing Rooms and Lounge.  
Beautiful Roof Garden, reached by elec-  
tric lift.

JOHN PATERSON .. Proprietor  
(For 20 Years with U.S.S. Co.).

WHANGAREI.



**COMMERCIAL HOTEL,**  
WHANGAREI.

H. J. BRAY

Having taken over the above Hotel, has  
increased the Accommodation and re-  
novated the Premises throughout. Cun-  
tomers can rely on Every Comfort and  
Attention

THE BEST BRANDS OF WINES AND  
SPIRITS KEPT IN STOCK.

Ample Sample Rooms for Commer-  
cial Travellers. Good Billiard Table.  
Stable Accommodation Superior to  
anything North of Auckland.



**WHANGAREI HOTEL**  
WHANGAREI.

This fine House, just re-built in  
brick and furnished in up-to-date style,  
now offers unrivalled accommodation  
to the Travelling Public.

Sample Room. Hot and Cold Baths.  
Two minutes' walk from Saltwater  
Bathing Place.

Stabling Second to None.  
Best Wines, Ales and Spirits Kept in  
Stock.

SAMUEL McMAEON .. Proprietor.

of Eilerslie, at his Registered Printing  
the Proprietors, Arthur Cleave and Co.,