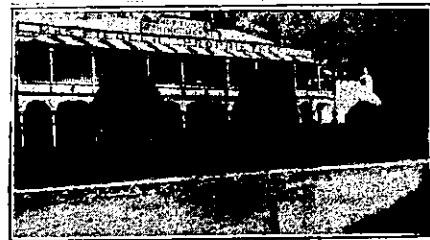


NEW ZEALAND HOTEL DIRECTORY—(CONTINUED). — PATRONISED BY HORSEMEN, CYCLISTS, MOTORISTS, SPORTSMEN, COMMERCIAL TRAVELLERS AND THE THEATRICAL PROFESSION.

CHRISTCHURCH.—Continued.



THE NEW CLARENDON HOTEL, CHRISTCHURCH. CORNER OF OXFORD TERRACE AND WORCESTER-STREET (One Minute's Walk from General Post Office. Recently Re-built. Superior Accommodation for Tourists and Travellers. All Modern Conveniences. Splendidly Situated. D. COLLINS Proprietor.



MARINE HOTEL, SUMNER. An Ideal Holiday Resort, offering excellent Accommodation for the Travelling Public. BEST BRANDS OF WINES AND SPIRITS. HOT, COLD, AND SHOWER BATHS. BILLIARD TABLE. JAS. HATFIELD Proprietor.

Where to Stay in Christchurch?

STOREY'S FAMILY HOTEL (Late Terminus). Right Opposite Railway Station. Convenient to all parts of city and suburbs, as Electric Cars start from the door. Excellent Cuisine. Tariff on application. WM. JAMES Proprietor.

Do You Want Accommodation? Then Interview CHARLIE J. STARK (Late of Gore, Oamaru, and Waimate).

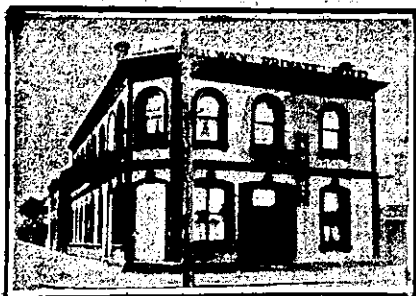
CAVERSHAM HOTEL. Corner HIGH AND MADRAS STS. CHRISTCHURCH. Where he will supply you with a Good Bed and the Best of Meals for 5s 6d per day. Ask your Cabman to drive you to the CAVERSHAM. Manning's Celebrated Ales.

KAVANAGH'S QUEEN'S HOTEL. Corner Manchester and Cashel Streets, CHRISTCHURCH. (Opposite Union S.S. Company's Offices.) J. J. KAVANAGH Proprietor. Pleased to see old and new friends. Visitors and Travelling Public will be accorded the very best attention. Liquors of best brands only. Speight's Ales on Draught.

DUNEDIN.

GLADSTONE HOTEL. MACLAGGAN-STREET, DUNEDIN. JOHN COLLINS Proprietor. (Late of Al Hotel, Pelichet Bay). The most Centrally-situated Hotel in the City. First-class Accommodation for Tourists Travellers, and Boarders. Suites of rooms for Families. Charges Moderate. A Special Feature: 1s Lunch from 12 to 2 o'clock. Hot, Cold and Shower Baths. The Very Best of Wines, Ales, and Spirits supplied.

CRITERION HOTEL, PRINCES STREET, DUNEDIN. First-class Accommodation for Boarders and Travelling Public. Prompt attention to Letters and Telegrams. Night and Day Porter kept. SPEIGHT'S ALES ON DRAUGHT. Telephone 211. P.O. Box 421. JAMES MURPHY Proprietor.

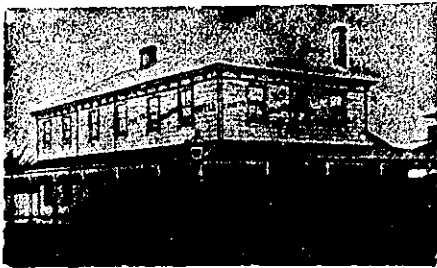


RAILWAY PRIVATE HOTEL. Corner CASTLE AND ST. ANDREW STS., DUNEDIN. (Two Minutes from Railway Station.) TARIFF, 4s. PER DAY. Weekly by Arrangement. J. BAIRD Proprietor.

DUNEDIN.—Continued.

BOWLING GREEN HOTEL. Corner of Frederick and Cumberland streets, DUNEDIN. W. D. Wyatt, late of Wellington, begs to inform his Friends and Country Visitors that he has taken the above well-known Hotel, which has been thoroughly Renovated and Re-furnished, and is now in a position to offer his Patrons First-class Accommodation. TERMS MODERATE. NOTED HOUSE FOR BEST WINES AND SPIRITS.

ELTHAM.



A COMFORTABLE HOSTELRY. CHARLES POTTS Begs to intimate that he has entered into possession of the BRANCH HOTEL, BRIDGE-ST. ELTHAM. Wines, Spirits and Liqueurs of the choicest quality. The Cuisine is under the management of an Experienced Chef. Hot Lunch Daily from 12.30. Saturday and Sale Days from 12. Tariff, 5s Per Day.

FEATHERSTON.

EMPIRE HOTEL AND LIVERY STABLES, FEATHERSTON. The Empire is the appointed Hotel to the Wellington Commercial Travellers' Association and N.Z. Cyclists' Touring Club. JOHN CARD Proprietor.

FEILDING.

PRIVATE HOTEL, YORK BUILDINGS NO. 2, FEILDING. FOR COMFORT AND CONVENIENCE UNEXCELLED. TELEPHONE No. 137. MRS. SHERWILL Proprietress.



MANCHESTER HOTEL, FEILDING. This centrally and conveniently-situated Hotel offers the best Accommodation for the Travelling Public. Replete with every modern convenience. Best Brands of Ales, Wines, Spirits, etc., kept on Stock. D. P. BARRETT Proprietor.

FOXTON.

MANAWATU HOTEL, AVENUE ROAD, FOXTON. A. E. SHADBOLT Proprietor. Every attention given to Visitors to the town, and also to Boarders. Comfortable Sitting Rooms and airy Bedrooms. Cuisine of the Best. None but the Most Superior Wines, Spirits, Ales and Stout, and other Liquors kept in stock. Good Stabling, and roomy loose boxes available.

POST OFFICE HOTEL, FOXTON. THE LEADING HOTEL OF "FLAXOPOLIS." Coaches leave hotel for Shannon and Levin. BEST OF WINES AND SPIRITS. SPEIGHT'S BEER. GEO. GRAY Proprietor.

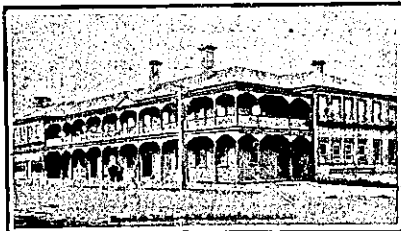
GISBORNE.



TURANGANUI HOTEL, WHARF, GISBORNE. JAMES WALLACE Proprietor. SPEIGHT'S XXX ALE ON DRAUGHT. Wines and Spirits of Best Brands. First-class Billiard Table.

HAMILTON.

FRANKTON HOTEL (Opposite Station). D. HOLLAND Proprietor. Best Brands Wines and Spirits Kept. Hancock's XXX Ales. First-class Accommodation for Tourists and the General Public.



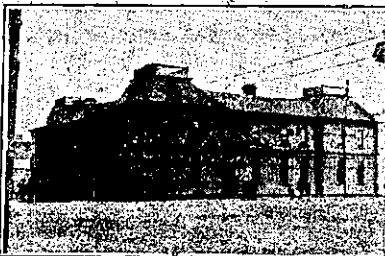
HAMILTON HOTEL, HAMILTON. J. B. HOOPER Proprietor. This Commodious and Up-to-date Hotel is replete with every modern convenience for the Comfort of Visitors. The Cuisine is first-class. Tariff Moderate. ONLY THE BEST OF LIQUORS KEPT ON STOCK.

UNDER NEW MANAGEMENT.



WESTCOURT, HAMILTON (Opposite Railway Station). PRIVATE BOARD AND RESIDENCE. TARIFF: 4s 6d PER DAY. D. McVICAR Proprietor.

HAWERA.



EGMONT HOTEL, HAWERA. A. J. JURY Proprietor. The Proprietor (lately of the Okalawa Hotel, and formerly of the Shamrock) begs to inform his friends and the public generally that he has taken over the above popular Hotel, and trusts that, by strict attention to their comfort, and by keeping only the best of liquors, to retain their patronage.

SHAMROCK HOTEL, PRINCESS-STREET, HAWERA. W. GREIG, Proprietor. Only Best Wines and Spirits. Good Accommodation for Travellers. TERMS MODERATE.

HOKIOURA.

THE FARTHEST NORTH. JOSEPH EVANS, JUN., Begs to notify that he has opened THE HOKIOURA HOTEL, HOKIOURA, MANGONUI COUNTY. Where every Accommodation can be found. CHARGES MODERATE. LIQUORS OF THE BEST. CHARGES MODERATE. DON'T FORGET— JOSEPH EVANS, JUN., PROPRIETOR.

PAEROA BREWERY CO., LTD. BREWERS, BOTTLERS, WINE AND SPIRIT MERCHANTS. Victoria Brewery, PAEROA, Telephone 30. Victoria Bottling Stores: KENNY-STREET, WAHAI. Tel. 39. Pure Beer, brewed only from Finest Malt and Hops. Invalid Stout a specialty. All kinds of Wines and Spirits in Stock.

HOKIANGA.



KOHUKOHU HOTEL, KOHUKOHU, HOKIANGA.

THE PRINCIPAL TOWNSHIP IN THE NORTH. Every Accommodation in this New, Clean, and Tidy Hostelery. All Liquors of the very best. Billiards, Stables, Good Meals. Charges in all Departments—Moderate. JOHN NICHOLSON Proprietor.



OPONONI HOTEL, OPONONI, HOKIANGA. The Tourists' Resort of the North. Adjacent to Sea Beach, where Tourists can indulge in Sea Bathing, Boating, Fishing, Horse Riding, Tennis, etc. A. S. ANDREWES Proprietor.

A. S. ANDREWES AND SONS, General Storekeepers, Gumburgers, Timber Brokers, etc. Opononi, Koutu, Waimamaku. Telegraphic Address: Andrewes, Opononi.

HOKITIKA.

COMMERCIAL HOTEL, REVELL STREET, HOKITIKA. THOS. PALMER Proprietor. (Late Cameron's Hotel). This Hotel is situated next to Cameron's Stables, and has been renovated throughout, and has every convenience for Travellers, Tourists, and the General Public. Hot and Cold Water Baths. Visitors will receive a hearty welcome. Only the Very Best of Wines, Spirits, and Ales kept. Board and Lodging. Moderate Charge; permanent Boarders by arrangement.

HUKERENUI.

HUKERENUI HOTEL, HUKERENUI. THE TERMINUS OF THE RAILWAY. Having secured the Freehold of the above convenient Hotel, the Proprietress is now making extensive and permanent alterations, so as to comfortably accommodate the Travelling Public who use it. Free House, and Liquors of the best. A Good Table kept, and Charges Moderate. M. E. KEATLEY Proprietress.

HUNTERVILLE.

HUNTERVILLE HOTEL, HUNTERVILLE. E. D. HAMMOND Proprietor. The Proprietor wishes to intimate that he has just taken over the above premises. This Hotel offers superior Accommodation to Travellers. Good Table. Best of Wines, Ales, etc. Terms: 4s 6d per day.

HUNTLY.

HUNTLY HOTEL, HUNTLY. L. B. HARRIS Proprietor. This Hotel is now one of the largest in the Waikato. All trains stop at Huntly, and the Hotel is a few yards from the Station. First-class Accommodation and Excellent Table.

KAMO.

KAMO HOTEL, KAMO. A. J. J. MEYER Proprietor. Good Accommodation for Visitors and Travellers. Best Brands of Wines and Spirits. Good Stabling and First-class Paddock.

KARANGAHAKE.



KARANGAHAKE HOTEL, MAIN-ST., KARANGAHAKE. Centrally situated. Coaches stop at the door. Dining-room capable of accommodating 90. Speight's Dunedin Ales, also Campbell-Ehrenfried's. Central Hall for Concerts, etc. is the largest in the town. Hotel and Halls lighted by Acetylene Gas. Spacious and well-lighted rooms. G. INGLIS Proprietor.