

NEW ZEALAND HOTEL DIRECTORY—(CONTINUED). — PATRONISED BY HORSEMEN, CYCLISTS, MOTORISTS, SPORTSMEN, COMMERCIAL TRAVELLERS, AND THE THEATRICAL PROFESSION.

WANGANUI.



Established 1857.
Tel. No. 46. P.O. Box No. 54.
FITTED THROUGHOUT
WITH ELECTRIC LIGHT

FOSTER'S HOTEL,
Nearly opposite Town Bridge,
TAUPO QUAY, WANGANUI.

J. R. FOSTER, Proprietor.
Within Three Minutes of
Railway Station and River
Tourist Steamers.

COFFEE PALACE,
Opposite Railway Station, Wanganui.

This well-known House is easily got at from the Railway Station, and Families and the General Public will find every Comfort and Convenience. Terms Moderate.

MISS DOBLE .. Proprietress.

COMMERCIAL HOTEL,
WANGANUI.

A. SUMMERS Proprietor.

First-class Accommodation for the Travelling Public.
Wines and Spirits of the Best Brands only kept in stock.



DUNTLAND HOTEL, WANGANUI.

F. C. FABER Proprietor.

THE HOME OF THE TOURIST.

The above Hotel has just been rebuilt and newly furnished throughout in an up-to-date style. The reading, writing and smoke rooms are replete with every convenience. The greatest care is taken to maintain a reputation for home comfort. Dark room for photographers.

THE PARKVILLE PRIVATE HOTEL,

RIDGWAY STREET,
WANGANUI.

Near Main Entrance to Cook's Gardens.

NEW AND UP-TO-DATE.

Specially adapted for the Convenience and Comfort of the Travelling Public. Beautiful Healthy Locality. One minute's walk from Railway Station and Post Office.

Hot and Cold Baths. Commercial and Sitting Rooms, also Writing Room for use of Patrons.
J. HODSON, Proprietor.
Telephone 505.
Telegrams and Correspondence attended to.

WELLINGTON.

WHEN VISITING
WELLINGTON,
STAY AT
THE

ALBERT HOTEL

Which has recently been re-furnished from cellar to ceiling, and possesses every modern convenience. Letters and telegrams will receive prompt attention.

T. G. ASHMAN, Proprietor.

CASEY'S FAMILY HOTEL LOWER HUTT.

JOHN YOUNG .. Proprietor.
(Late of Johnsonville).

This hotel offers accommodation second to none in the district. Central position and close to the Post Office. Billiards, Excellent Table, and Best Brands of Wines and Spirits. Only Speight's Beer drawn. Good Stabling and Commodious Loose Boxes.

OCCIDENTAL HOTEL, Lambton Quay, Wellington.

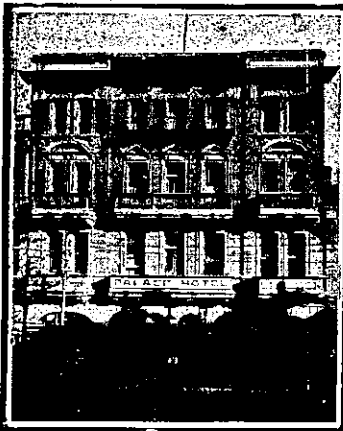
I beg to announce that I have taken over this well-known Hotel, and alterations and improvements are now in hand which will again make the Occidental the Leading House of the City. The house is being completely renovated and put in thorough order. Daily Lunch will be a speciality.
JOHN H. FAIRBAIRN .. Proprietor.

For Mutual Advantage, please mention this paper when communicating with our Advertisers.

WELLINGTON.—Continued.

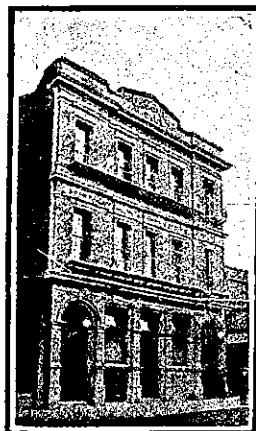
THE EMPIRE HOTEL,
(LIMITED).

THE LEADING AND MOST CENTRAL HOTEL IN WELLINGTON



THE PALACE HOTEL, WILLIS-STREET.

Wellington's Most Comfortable Hostelry. Magnificently Furnished. Replete with Every Modern Convenience. Electric Light Throughout. Perfect Cuisine. Now under the Management of A. W. HARRISON. Communications promptly replied to. Telephone 863.



MASONIC HOTEL,
WELLINGTON.

UNDER NEW MANAGEMENT.

THIS IS ONE OF THE BEST AND MOST UP-TO-DATE HOTELS IN WELLINGTON.

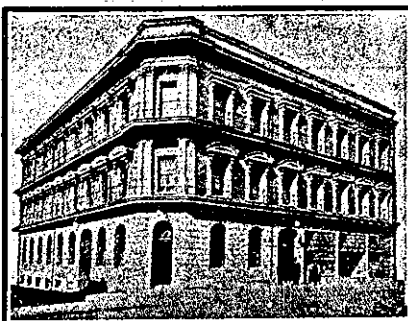
ALL MODERN CONVENIENCES.

PLUNGE BATHS AND ELECTRIC LIGHT THROUGHOUT.

ONLY THE BEST LIQUORS KEPT IN STOCK.

TARIFF: 7s PER DAY.

B. O'NEILL PROPRIETOR.



THE NEW ZEALANDER HOTEL, MANNERS-STREET (close to Opera House), WELLINGTON.

M. J. ("TED.") DONNELLY, Proprietor (Late of Masonic Hotel, Wellington).

This Hotel has recently been rebuilt, and is now ready to accommodate Commercial Travellers and the Travelling Public. Letters and Telegrams receive prompt attention.

Telephone No. 1701. P.O. Box 557.

WESTPORT.



GRAND HOTEL

PALMERSTON-STREET

WESTPORT.

DAVID LEECH Proprietor

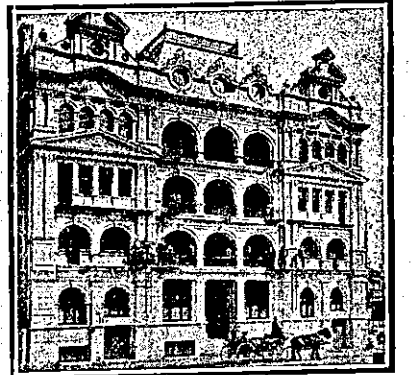
WELLINGTON.—Continued.



BARRETT'S HOTEL, LAMBTON QUAY, WELLINGTON (Op. Bank of New Zealand).

Newly Built in Brick. Over 76 Rooms. All Modern Conveniences. Close to Wharf and Post Office. Excellent Table kept. Day and Night Porters in attendance. Tariff 7s per day, weekly by arrangement. Letters and Telegrams receive prompt attention. Phone 1076.

W. M. KELLY Proprietor.



HOTEL ARCADIA, WELLINGTON.

Most Up-to-date Private Hotel in the Colonies. Smoking Rooms, Writing Rooms, Drawing Rooms and Lounge. Beautiful Roof Garden, reached by electric lift.

JOHN PATERSON .. Proprietor (For 20 Years with U.S.S. Co.)

WHANGAREI.



COMMERCIAL HOTEL, WHANGAREI.

H. J. BRAY

Having taken over the above Hotel, has increased the Accommodation and renovated the Premises throughout. Customers can rely on Every Comfort and Attention.

THE BEST BRANDS OF WINES AND SPIRITS KEPT IN STOCK. Ample Sample Rooms for Commercial Travellers. Good Billiard Table. Stable Accommodation Superior to anything North of Auckland.



WHANGAREI HOTEL, WHANGAREI.

This fine House, just re-built in brick and furnished in up-to-date style, now offers unrivalled accommodation to the Travelling Public.

Sample Room. Hot and Cold Baths. Two minutes' walk from Saltwater Bathing Place. Stabling Second to None. Best Wines, Ales and Spirits Kept in Stock.

SAMUEL McMAHON Proprietor.

PROVINCIAL HOTEL, WANGANUI.
FIRST-CLASS ACCOMMODATION FOR THE TRAVELLING PUBLIC. ONLY THE BEST OF ALES, WINES, AND SPIRITS KEPT IN STOCK.

W. TUCK Proprietor.

WAVERLEY.

CLARENDON HOTEL, WAVERLEY.

MR. G. W. OAKENFULL.

Begs to inform the travelling public and residents of Waverley that he has taken over the Clarendon Hotel. He hopes that with strict attention to the comfort of his guests, a good table, and the best of Ales, Wines, Spirits, etc., to be favoured with their patronage.

WOODVILLE.



COMMERCIAL HOTEL, WOODVILLE. (Two minutes walk from Railway Station).

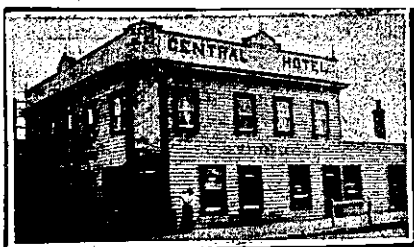
C. BALCOMBE Proprietor.

This Hotel is now thoroughly complete, and is one of the best appointed houses along the line. All trains stop in time for refreshments. Breakfast ready for early trains. Night Porter in attendance. First-class Luncheon from 12 noon till 2.30 p.m., 1s.

LAING'S MASONIC HOTEL, WOODVILLE.

Excellent Accommodation for the Travelling Public at a Moderate Tariff. Best Wines Spirits, Ales, etc Good Billiard Table. Ample Stabling and Paddockings. Coaches run twice daily to Shannon.

ANDREW LAING (late of Foxton) Proprietor.



CENTRAL HOTEL, WOODVILLE, HAWKE'S BAY.

J. BOTTOMLEY .. Proprietor. J.B. would remind all old friends and the travelling public generally that he is still conducting the above hotel. The Central is suitably adapted for visitors to Woodville on account of its central position, and its prestige for Good Accommodation and Quality of Liquors and Ales is established.

POST OFFICE HOTEL, (Corner Vogel and Ross Streets) WOODVILLE (Next Post Office).

J. W. ROBINSON Proprietor. Late of Prince of Wales, Wellington.

Under New Management, and everything of the Choicest.

WINES AND SPIRITS OF BEST BRANDS.

STAPLE'S BEER.