

**NEW ZEALAND HOTEL DIRECTORY—(CONTINUED). — PATRONISED BY HORSEMEN, CYCLISTS, MOTORISTS, SPORTSMEN, COMMERCIAL TRAVELLERS AND THE THEATRICAL PROFESSION.**

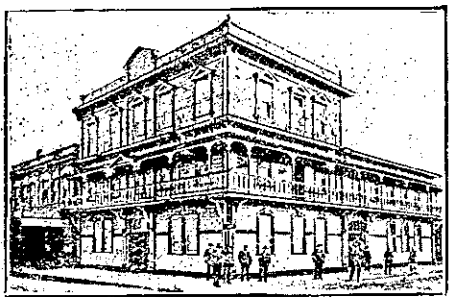
**PALMERSTON NORTH.—Continued.**  
**THE COMMERCIAL HOTEL,** PALMERSTON NORTH.  
**T. CHILDS** ..... Proprietor.  
 The proprietor of this conveniently-situated Hotel having had the premises entirely renovated and remodelled, is prepared to receive travellers and the public generally, and guarantees strict attention, the best of Wines and Spirits, and trusts to obtain by these means a fair share of patronage.

**DEVINE'S EMPIRE HOTEL,** MAIN STREET, PALMERSTON NORTH.  
 A First-class Family and Commercial Hotel. Convenient to all public offices and places of amusement. Letters and telegrams will receive prompt attention. Telephone 108. P.O. Box 193.  
**W. DEVINE** ..... Proprietor.

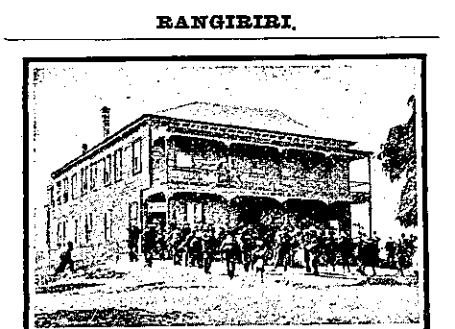
**THE NEW RAILWAY HOTEL,** (Opposite Railway Station) PALMERSTON NORTH.  
**J. HURLEY** ..... Proprietor.  
 Over 70 Rooms, 6 Bathrooms (hot and cold water), newly furnished throughout. Up-to-date in every respect. First-class Table. Best Liquor only. Terms Moderate.

**CLUB HOTEL,** PALMERSTON NORTH.  
**H. B. TUCKER** ..... Proprietor.  
 This Hotel stands on about two acres of land, and includes a large garden and stables, twelve large, well-lighted and ventilated Sample Rooms.  
 Telephone 29. P.O. Box 46

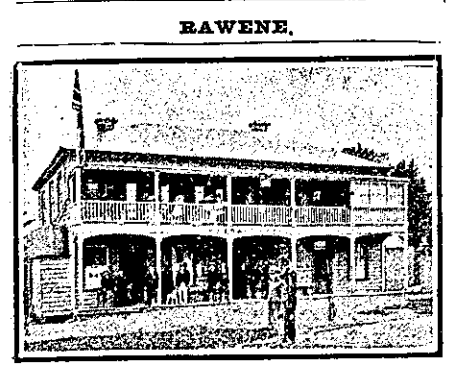
**UNDER THE IMMEDIATE SUPERVISION OF MR AND MRS. H. B. TUCKER.**



**CENTRAL HOTEL, PALMERSTON NORTH.**  
 The Central Hotel on Main-st. West in Palmerston is surely the best. The tables good, the bedrooms fine. With best of spirits, beer and wine; Fine sitting-rooms, baths hot and cold. And a welcome sure for young and old. So call on me when next you pass, And w'll enjoy a friendly glass.  
**A. F. ANDERSON** .... Proprietor.

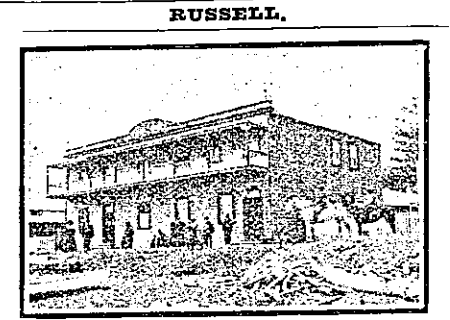


**RANGIRIRI HOTEL, RANGIRIRI.**  
**E. T. BAIN** ..... Proprietor.  
 New and Up-to-date House, containing accommodation for 40 visitors. Boating on the Waikato River. First-class Billiard Table. Trout Fishing, etc. Best Wines and Spirits.



**MASONIC HOTEL, RAWENE.**  
 Every Accommodation at this old and favourite Hostelry may be found for Commercial Travellers, Tourists and Family Parties.  
 No Trouble Spared. Good Table Kept. All Charges Most Reasonable.  
**WINES, SPIRITS AND BEERS OF THE BEST.**  
 Billiards, Boats, Stables, etc.  
**E. FERGUSON** .... Proprietor.

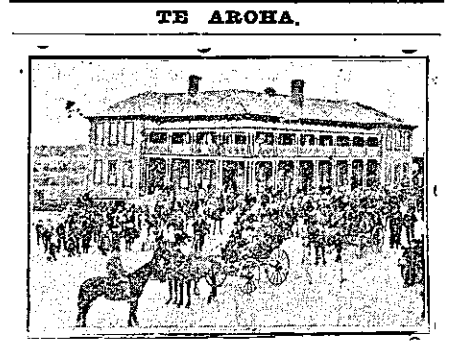
**REEFTON, GLADSTONE HOTEL, REEFTON.**  
 This Hotel, having been thoroughly Renovated and Re-furnished throughout, now offers Superior Accommodation at a moderate tariff.  
 Best Brands of Wines, Spirits, Ales, etc.  
 TARIFF: 4s 6d PER DIEM.  
**R. DUNPHY** ..... Proprietor.



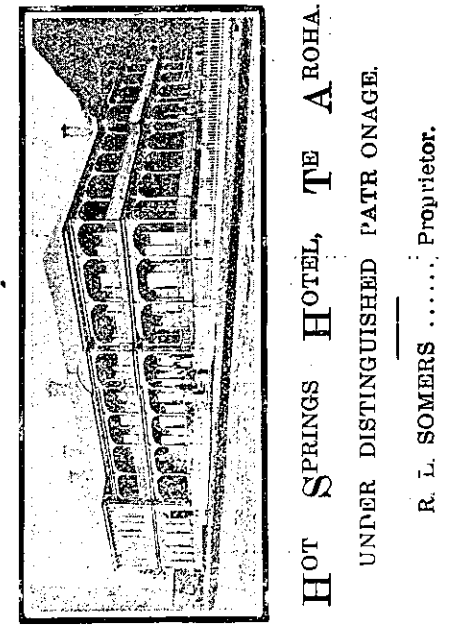
**RUSSELL, DUKE OF MARLBOROUGH HOTEL, RUSSELL BAY OF ISLANDS.**  
**DAVID FORSYTH** .. Proprietor.  
 Wishes everyone to know that he has taken over the above long and favourably-known House. Attention and Civility, as well as a Good Table guaranteed, with "some" Fish of the choicest almost every day. Give the House a Call, and try the new Proprietor. Boats and Horses for Hire. Billiards, etc Charges Reasonable. Nothing but the Best of Beers and Liquors kept in Stock.

**TAIHAPE, THE GRETNA HOTEL, TAIHAPE.**  
 UNDER NEW MANAGEMENT.  
 Tariff: 8s Per Day. Good Sample Rooms. Best Brands Only. Passengers called for early Coach.  
**F. H. GIBBONS** ..... Proprietor.

**TAURANGA, TAURANGA HOTEL, STRAND, TAURANGA.**  
 Under New Management.  
**T. R. NIXON**, (Late of Carpenters' Arm, Auckland). Desires to intimate that he has taken over the above popular House, where he will be pleased to meet old and new Patrons. Extensive Alterations and Improvements have been effected, and Visitors will find every comfort and convenience. Tariff moderate. Wines and Spirits of Best Brands only. Night Porter in attendance.



**TE AROHA, PALACE HOTEL, THE PREMIER HOTEL OF TE AROHA.**  
**FRANK PILLING** ..... Owner.  
 Offers Special Accommodation for Tourists, Families and Visitors. Commercial Sample Room. Telegrams Promptly Attended to. Spacious Bedrooms, Private Parlours. Hot, Cold, and Shower Baths.  
 TARIFF: From 7s Per Day.  
**THE SPORTING HOTEL OF THE DISTRICT.**



**TE AROHA, HOT SPRINGS HOTEL, TE AROHA.**  
 UNDER DISTINGUISHED PATRONAGE.  
**R. L. SOMERS** ..... Proprietor.

**TE AWAMUTU, COMMERCIAL HOTEL, TE AWAMUTU.**  
**JOSEPH BATHURST** .. Proprietor.  
 EVERY MODERN CONVENIENCE.  
 BATH ROOMS, BILLIARD ROOM. FIRST-CLASS SAMPLE ROOMS.

**THAMES.—Continued.**  
**PURIRI HOTEL, PURIRI.** (10 Miles from Thames).  
**JOHN GANLEY** ..... Proprietor.  
 FIRST-CLASS ACCOMMODATION. CHARGES MODERATE.  
 ONLY BEST BRANDS ALES, WINES AND SPIRITS KEPT.

**THAMES, SALUTATION HOTEL, MARY-STREET, THAMES.**  
**H. ROWNLEE** .... Proprietor.  
 SUPERIOR ACCOMMODATION. BEST BRANDS OF BOTTLED ALES AND FOUNT. SPIRITS, WINES, ETC. SPEIGHT'S DUNEDIN ALE ON DRAUGHT.

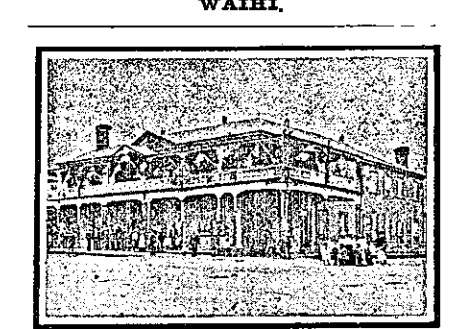
**TIMARU, CROWN HOTEL, TIMARU.**  
**W. QUIRK** ..... Proprietor (Late of Oamaru).  
 Has pleasure in notifying the Public of Timaru and surrounding districts that he has taken over the above well-known Hotel, and will run it on the best lines. Good Table and Accommodation. All the Best Brands of Ales and Liquors on sale.  
**W. QUIRK** ..... Proprietor.

**TIMARU, QUEEN'S HOTEL, TIMARU.**  
**MICHAEL FITZGERALD** . Proprietor (Late of Ashburton).  
 Corner of Barnard and North Streets, opposite Law Courts. Five Minutes from Railway Station. Splendid Sea View. Hot and Cold Shower Baths.  
 Terms: 4s 6d Per Day, or 25s Week.

**TIMARU, EXCELSIOR HOTEL, TIMARU.**  
**WM. H. ANDERSON** .. Proprietor. (L of Middlemarch).  
 The X.L.C.R. for FIRST-CLASS ACCOMMODATION and Choicest Brands of Liquors.  
 One Minute's Walk from Railway Station and Post Office.  
 TERMS: 6s 6d PER DAY.  
 Telegrams: EXCELSIOR.  
 Telephone No. 154.

**TIMARU, MELVILLE HOTEL, TIMARU.**  
**J. REILLY** ..... Proprietor (Late of Wallingford Hotel, Temuka).  
 The Proprietor will be pleased to see Old and New Friends at the Melville.  
 BEST WINES AND SPIRITS ONLY.

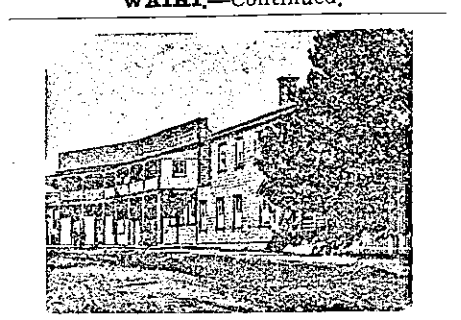
**TIMARU, COMMERCIAL HOTEL, TIMARU.**  
 (Opposite Rotunda, Stafford-street).  
**MRS. A. A. WEBB** .... Proprietress (Late of Middlemarch).  
 Superior Accommodation for Visitors and Boarders. All the Comforts of a Home. Wines, Spirits and Ales of the Best Brands. Charges Strictly Moderate.  
**CLUB HOTEL, TIMARU.**  
 Close to Railway Station, and offering Excellent Accommodation to Travellers.  
 Liberal Cuisine. Hot and Cold Baths. Best Brands of Liquors Stocked.  
 Moderate Tariff.  
**E. WARD** .. Proprietor.



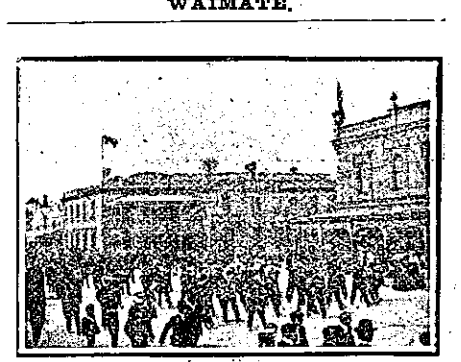
**WAIHI, ROB ROY HOTEL, WAIHI.**  
 "Cead Mille Failte."  
**JOHN KELLY** .... Proprietor.  
 Only the Best Brands of Liquor stocked. Campbell-Ehrenfried's XXXX Ale. Accommodation of the Best provided.



**WAIHI, CENTRAL HOTEL, WAIHI.**  
**ALFRED BUCKLAND** .. Proprietor.  
 Every Modern Comfort and Convenience for Tourists, Travellers, and Families. First-class Table. Only Best Brands of Ales, Wines and Spirits on Stock. Terms Moderate.



**WAIHI, WAIHI HOTEL, WAIHI.**  
 The Accommodation is unsurpassed and the Charges Moderate. Sample Rooms for Travellers. Hall for concerts, socials, etc. Terms on application.  
 Coaches leave the Door for Katikati, Tauranga, etc.  
 Telegrams: "Meyer," Waihi. Box 24.  
**H. E. MEYER** ..... Licensee.



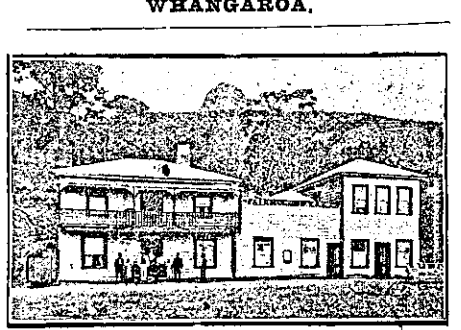
**WAIMATE, WAIMATE HOTEL, WAIMATE.**  
 This Hotel is a Fine New Modern Brick Building, up-to-date in every respect.  
 Superior Accommodation for Travellers, Visitors and Tourists.  
 Hot and Cold Shower and Plunge Baths.  
 Sample Rooms. First-class Table. Every Attention.  
**T. TWOMEY** ..... Proprietor.

**WAIKAWA, COMMERCIAL HOTEL, WAIKAWA.**  
 Private Suites of Apartments and every Convenience for the Accommodation of the Public.  
**WINES, SPIRITS and BEER OF THE BEST QUALITY ONLY.**  
 A FIRST-CLASS BILLIARD TABLE. Good Stabling and Paddock Accommodation.  
**W. PELLOW** .. Proprietor.

**WAIKAWA, WAIPUKURAU, WAIPUKURAU HOTEL, WAIPUKURAU.**  
 FIRST-CLASS ACCOMMODATION FOR VISITORS.  
**WINES AND SPIRITS OF THE BEST BRANDS.**  
 Benzine and Naphtha stocked for the convenience of Motorists.  
**R. CONEYS** ..... Proprietor.

**WAITOTARA, WAITOTARA HOTEL, WAITOTARA.**  
 Has been brought thoroughly Up-to-date and offers First-class Accommodation to Travellers.  
 Best of Wines and Spirits. Speight's XXX Ales always on Tap.  
**GEO. McARTHUR** ..... Proprietor. (Late of Wellington).

**WAIKUKU, KENTISH HOTEL, WAIKUKU.**  
**JOE MOLLOY** ..... Proprietor.  
 First-class Accommodation for the Travelling Public.  
**WINES, ALES AND SPIRITS OF THE BEST BRANDS ONLY.**



**WHANGAROA, MASONIC HOTEL, WHANGAROA.**  
**C. GOTHARD** ..... Proprietor.  
 Wines and Spirits of the Best Brands. First-class Accommodation for Visitors, Tourists, and Commercial Travellers.  
 Plunge and Shower Baths. Paddock. Horses for Hire. Oil Launch. Billiards.  
 A magnificent place for a Holiday.  
 Tariff: 6s Per Day.