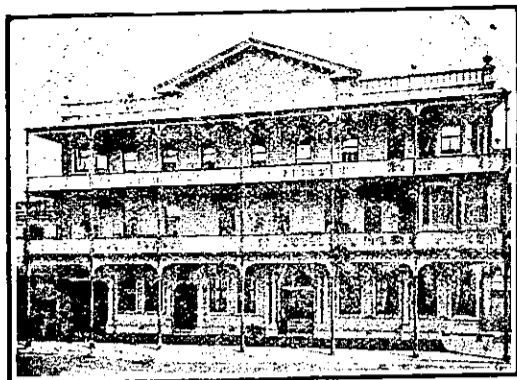


NEW ZEALAND HOTEL DIRECTORY—(CONTINUED). — PATRONISED BY HORSEMEN, CYCLISTS, MOTORISTS, SPORTSMEN, COMMERCIAL TRAVELLERS, AND THE THEATRICAL PROFESSION.

WANGANUI.



Established 1857..
Tel. No. 46. P.O. Box No. 54.
FITTED THROUGHOUT
WITH ELECTRIC LIGHT

FOSTER'S HOTEL,
Nearly opposite Town Bridge,
TAUPO QUAY, WANGANUI.

J. R. FOSTER, Proprietor.
Within Three Minutes of
Railway Station and River
Tourist Steamers.

COFFEE PALACE,
Opposite Railway Station, Wanganui.

This well-known House is easily got
at from the Railway Station, and Families
and the General Public will find
every Comfort and Convenience. Terms
Moderate.

MISS DOBLE .. Proprietress.

COMMERCIAL HOTEL,
WANGANUI.

A. SUMMERS Proprietor.

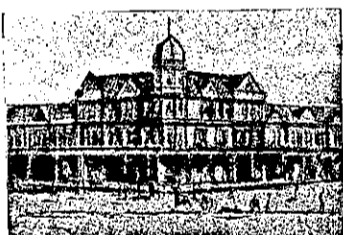
First-class Accommodation for the
Travelling Public.
Wines and Spirits of the Best Brands
only kept in stock.



MASONIC HOTEL,
RIVERBANK, WANGANUI.

WM. ABBOTT, Proprietor.
(Late of Star Hotel, Otahuhu).

EVERYTHING UP TO DATE.



RUTLAND HOTEL, WANGANUI.
F. C. FABER Proprietor.

THE HOME OF THE TOURIST.

The above Hotel has just been rebuilt
and newly furnished throughout in an
up-to-date style. The reading, writing
and smoke rooms are replete with
every convenience. The greatest care
is taken to maintain a reputation for
home comfort. Dark room for photo-
graphers.

**THE PARKVILLE PRIVATE
HOTEL,**

RIDGWAY STREET,
WANGANUI.
Near Main Entrance to Cook's Gardens.
NEW AND UP-TO-DATE.

Specially adapted for the Convenience
and Comfort of the Travelling Public.
Beautiful Healthy Locality. One
minute's walk from Railway Station
and Post Office.
Hot and Cold Baths.
Commercial and Sitting Rooms, also
Writing Room for use of Patrons.
J. HODSON, Proprietor.
Telephone 505.
Telegrams and Correspondence at-
tended to.

WELLINGTON.

**CASEY'S FAMILY HOTEL LOWER
HUTT.**
JOHN YOUNG .. Proprietor.
(Late of Johnsonville).

This hotel offers accommodation sec-
ond to none in the district. Central
position and close to the Post Office.
Billiards, Excellent Table, and Best
Brands of Wines and Spirits. Only
Speight's Beer drawn.
Good Stabling and Commodious Loose
Boxes.

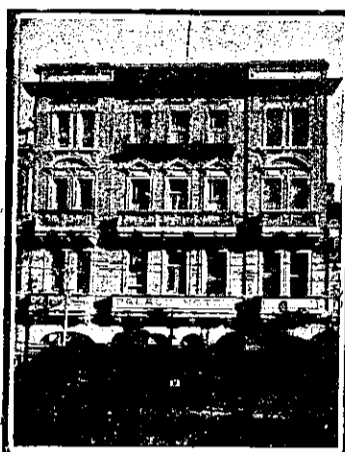
OCCIDENTAL HOTEL, Lambton
Quay, Wellington.

I beg to announce that I have taken
over this well-known Hotel, and altera-
tions and improvements are now in
hand which will again make the Occi-
dental the Leading House of the City.
The house is being completely renov-
ated and put in thorough order. Daily
Lunch will be a speciality
JOHN H. FAIRBAIRN .. Proprietor.

WELLINGTON.—Continued.

THE EMPIRE HOTEL,
(LIMITED).

THE LEADING AND MOST CE-
TRAL HOTEL IN WELLINGTON.



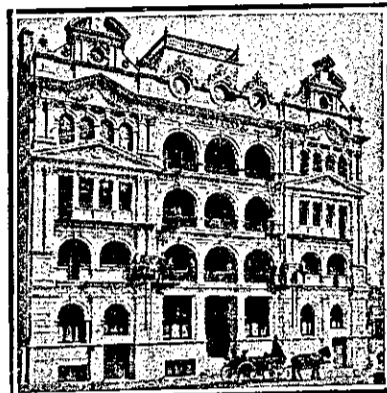
THE PALACE HOTEL, WILLIS-
STREET.
Wellington's Most Comfortable Hos-
telry. Magnificently Furnished. Re-
plete with Every Modern Convenience.
Electric Light Throughout. Perfect
Cuisine. Now under the Management
of A. W. HARRISON. Communica-
tions promptly replied to. Telephone
863.

WELLINGTON.—Continued.



BARRETT'S HOTEL,
LAMBTON QUAY, WELLINGTON.
(Op. Bank of New Zealand).
Newly Built in Brick. Over 70
Rooms. All Modern Conveniences.
Close to Wharf and Post Office. Ex-
cellent Table kept. Day and Night
Porters in attendance. Tariff 7s per
day, weekly by arrangement. Letters
and Telegrams receive prompt atten-
tion. Phone 1076.

W. M. KELLY Proprietor.



HOTEL ARCADIA,
WELLINGTON.

Most Up-to-date Private Hotel in the
Colonies. Smoking Rooms, Writing
Rooms, Drawing Rooms and Lounge.
Beautiful Roof Garden, reached by elec-
tric lift.
JOHN PATERSON .. Proprietor
(For 20 Years with U.S.S. Co.).



PROVINCIAL HOTEL, WANGANUI.
FIRST-CLASS ACCOMMODATION
FOR THE TRAVELLING PUBLIC.
ONLY THE BEST OF ALES, WINES,
AND SPIRITS KEPT IN STOCK.

W. TUCK Proprietor.

WARKWORTH.

WARKWORTH HOTEL

B. R. SCEATS Proprietor.
First-class Accommodation. Good
Table. Good Stabling and Paddocking.
Only the Best Brands of Ales, Wines
and Spirits kept.
Commercial and Private Sitting
Rooms. Bathroom and every conveni-
ence for the comfort of the travelling
and general public. Meals at all hours.
Terms reasonable.

WAVERLEY.

CLARENDON HOTEL, WAVERLEY.

MR. G. W. OAKENFULL
Begs to inform the travelling public
and residents of Waverley that he has
taken over the Clarendon Hotel. He
hopes that with strict attention to the
comfort of his guests, a good table, and
the best of Ales, Wines, Spirits, etc.,
to be favoured with their patronage.

WOODVILLE.



COMMERCIAL HOTEL, WOODVILLE
(Two minutes walk from Railway
Station).

C. BALCOMBE Proprietor.
This Hotel is now thoroughly com-
plete, and is one of the best appointed
houses along the line. All trains stop
in time for refreshments. Breakfast
ready for early trains. Night Porter
in attendance. First-class Luncheon
from 12 noon till 2.30 p.m., 1s.

LAING'S MASONIC HOTEL,
WOODVILLE.

Excellent Accommodation for the
Travelling Public at a Moderate Tariff.
Best Wines, Spirits, Ales, etc. Good
Billiard Table.
Ample Stabling and Paddocking.
Coaches run twice daily to Shannon.

ANDREW LAING (late of Foxton)
Proprietor.

CENTRAL HOTEL, WOODVILLE,
HAWKE'S BAY.

J. BOTTOMLEY .. Proprietor.
J.B. would remind all old friends and
the travelling public generally that he
is still conducting the above hotel. The
Central is suitably adapted for visitors
to Woodville on account of its central
position, and its prestige for Good Ac-
commodation and Quality of Liquors
and Ales is established.

POST OFFICE HOTEL.

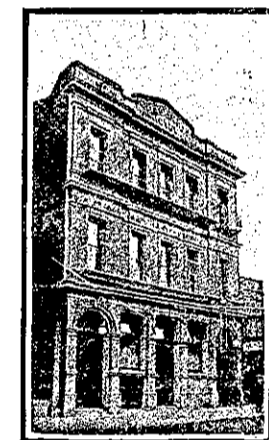
(Corner Vogel and Ross Streets)
WOODVILLE
(Next Post Office).

J. W. ROBINSON Proprietor.
Late of Prince of Wales, Wellington.

Under New Management, and every-
thing of the Choicest.

WINES AND SPIRITS OF BEST
BRANDS.

STAPLE'S BEER.



MASONIC HOTEL,
WELLINGTON.

UNDER NEW MANAGEMENT.

THIS IS ONE OF THE BEST AND MOST UP-TO-
DATE HOTELS IN WELLINGTON.

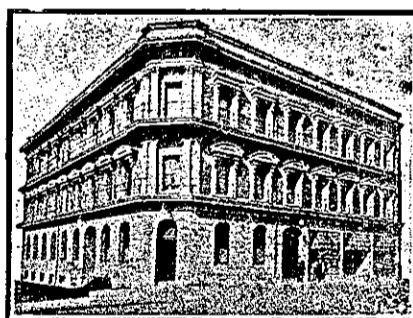
ALL MODERN CONVENIENCES.

PLUNGE BATHS AND ELECTRIC LIGHT
THROUGHOUT.

ONLY THE BEST LIQUORS KEPT IN STOCK.

TARIFF: 7s PER DAY.

B. O'NEILL PROPRIETOR.



THE NEW ZEALANDER HOTEL,
MANNERS-STREET (close to
Opera House), WELLINGTON.

M. J. ("TED.") DONNELLY, Proprietor
(Late of Masonic Hotel, Wellington).

This Hotel has recently been rebuilt,
and is now ready to accommodate Com-
mercial Travellers and the Travelling
Public.
Letters and Telegrams receive prompt
attention.
Telephone No. 1701. P.O. Box 557.

WESTPORT.



GRAND HOTEL

PALMERSTON-STREET

WESTPORT.

DAVID LEECH Proprietor.

WHANGAREI.



WHANGAREI HOTEL,
WHANGAREI.

This fine House, just re-built in
brick and furnished in up-to-date style,
now offers unrivalled accommodation
to the Travelling Public.
Sample Room. Hot and Cold Baths.
Two minutes' walk from Saltwater
Bathing Place.
Stabling Second to None.
Best Wines, Ales and Spirits Kept in
Stock.
SAMUEL McMAHON Proprietor.



COMMERCIAL HOTEL,
WHANGAREI.
W. J. BRAY

Having taken over the above Hotel, has
increased the Accommodation and re-
novated the Premises throughout.cus-
tomers can rely on Every Comfort and
Attention.
THE BEST BRANDS OF WINES AND
SPIRITS KEPT IN STOCK.
Ample Sample Rooms for Commer-
cial Travellers. Good Billiard Table.
Stable Accommodation Superior to
anything North of Auckland.