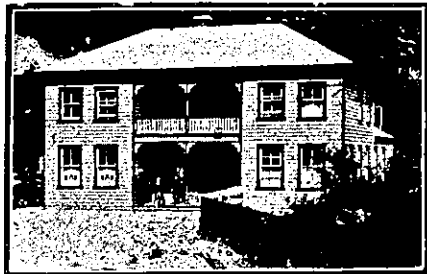


NEW ZEALAND HOTEL DIRECTORY—(CONTINUED). — PATRONISED BY HORSEMEN, CYCLISTS, MOTORISTS, SPORTSMEN, COMMERCIAL TRAVELLERS AND THE THEATRICAL PROFESSION.

KARANGAHAKE.—Continued.



TRAMWAY HOTEL, KARANGAHAKE (Across the Bridge).

This is a New and Up-to-date Hotel, having recently been re-erected. First-class Ales and Spirits. Hot and Cold Baths and Every Convenience.

MRS. K. CROSBY, Proprietress.

KAUKAPAKAPA.



BRIDGE HOTEL, KAUKAPAKAPA.

WALTER DYER Proprietor.

Excellent Accommodation for Travellers and Visitors. Billiard Room.

KIHIKIHI.

ALPHA HOTEL, KIHIKIHI.

GEORGE WALLACE .. Proprietor.

FIRST-CLASS ACCOMMODATION. TARIFF—MODERATE.

BEST BRANDS OF ALES, WINES, AND SPIRITS, ETC.

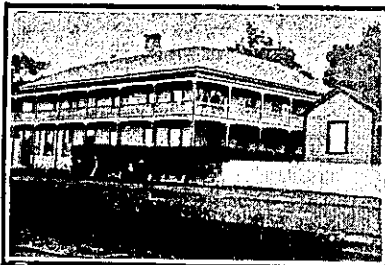
STAR HOTEL, KIHIKIHI.

FREDERICK HENWOOD . Proprietor.

FIRST-CLASS ACCOMMODATION.

ONLY BEST BRANDS OF ALES, WINES AND SPIRITS STOCKED.

MANGONUI.



THE MANGONUI HOTEL, MANGONUI.

THOS. WEBB Proprietor.

T.W. begs to inform the Settlers of the North generally, and all Visitors to Mangonui, that he has taken over the New and Commodious Hostelry, near the Wharf, and trusts by strict attention to Business and Civility, to meet all demands. A GOOD TABLE KEPT. None but the best of Liquors, Beers, etc., kept in stock, and on Draught.



WAITAIA HOTEL, KAITAIA MANGONUI.

C. F. MOLLOY (Brother of Jos. Molloy, Albion Hotel, Hobson-street, Auckland), Proprietor of the above old and well-established Hostelry, begs to inform the Travelling Public that every Accommodation is now afforded. Stables, Paddock, and Plenty of Feed for Horse and Owner. The Best of Wines, Spirits and Beers.

MERCER.

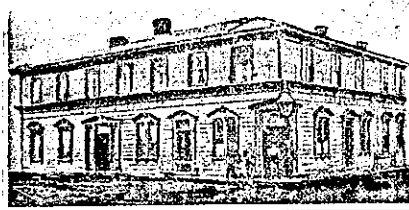
RAILWAY HOTEL, MERCER.

First-class Accommodation for Tourists and Travellers.

Wines and Spirits of the best brands only kept in stock.

F. GIMBLETT Proprietor.

MANGAWEKA.



T ANGHOLM HOTEL, MANGAWEKA.

First-class Accommodation for the Travelling Public.

Only the Best Wines, Ales and Spirits kept.

Telegrams receive prompt attention.

G. F. BONNOR Proprietor.

MARTON.

CLUB HOTEL, MARTON.

R. J. WALTERS Proprietor.

First-class Accommodation for Visitors and the Travelling Public. Only the Best Brands of Ales, Wines and Spirits kept. First-class Billiard Room.

RAILWAY HOTEL, MARTON JUNCTION. (Right Opposite the Station).

All Trains stop, ample time for Refreshments. All Wines and Spirits guaranteed. The very best Table kept.

ARTHUR PATERSON, Proprietor.

MARTON HOTEL, MARTON.

J. A. PAWSON Proprietor. Mr. Pawson begs to intimate that he has taken over the above Hotel, and the travelling public can rely on First-class Accommodation at a moderate tariff. Only the Best of Ales, Wines, and Spirits kept. Tariff: 4s 6d per Day.

MASTERTON.



CENTRAL HOTEL, MASTERTON.

MR. F. S. COOPER, late of the Empire Hotel, Hawera, and formerly of Wellington, wishes to inform the Travelling Public that he has taken over the above well-known house. This hotel offers superior accommodation to travellers, and is a First-class Family Residence in every respect. The rooms are well ventilated, lofty, and comfortably furnished. Good Table, Best of Wines, Ales, etc. Telegrams and Letters will receive prompt attention. F. S. COOPER Proprietor.

CLUB HOTEL, QUEEN-STREET, MASTERTON.

Patronised by His Excellency The Earl of Ranfurly.

Now under the Management of TOM PORTER, (Late Manager Royal Oak Hotel, Wellington).

Having made arrangements for the use of Sample Rooms, which are adjacent to the Club, Travellers can rely on being accommodated by wiring for Sample Rooms. Nothing but Staples and Co.'s Beer sold.

TOM PORTER Proprietor.

MORRINSVILLE.

NOTTINGHAM CASTLE HOTEL MORRINSVILLE. (Five Minutes from Railway Station).

JAS. GANLEY Proprietor.

This Hotel has recently been renovated and many additions made.

First-class Accommodation for the Travelling Public. Meals at all hours. Wines and Spirits of Best Brands only.

NAPIER.

FUSZARD'S FERNHILL HOTEL.

MIDWAY BETWEEN NAPIER AND HASTINGS.

EVERY ATTENTION TO THE TRAVELLING PUBLIC. EVERYTHING OF THE BEST.

WINTER FUSZARD .. Proprietor.

ROYAL HOTEL.

CARLYLE-STREET, NAPIER

(Right opposite Recreation Ground).

GEO. H. GILDING Proprietor.

NAPIER.—Continued.



EMPIRE HOTEL, NAPIER.

(Close to Post Office).

38 Bedrooms, Commercial Room, Sitting Rooms, Study, etc. Hot, Cold, and Shower Baths. Tam-o-Shanter and Oban Whisky. Speight's and Manning's Ales. Tariff, 5s per day; 25s per week.

JOHN BURRIDGE Proprietor. (For 23 years manager of Hawke's Bay Club).

SIMPSON'S CENTRAL HOTEL,

EMERSON-STREET, NAPIER.

Now prepared to receive the Travelling Public. First-class Accommodation. Beer, Wine, and Spirits guaranteed of the best.

CLUB HOTEL, DANNEVIRKE.

J. HALLIGAN Proprietor.

This Well-known Establishment, which adjoins Dannevirke Railway Station, offers unsurpassed Accommodation to Travellers and the General Public.

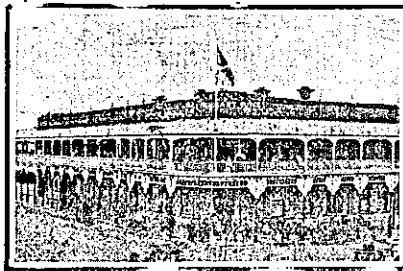
ONLY BEST QUALITIES OF ALES, WINES, AND SPIRITS STOCKED.

NEW PLYMOUTH.

BREAKWATER HOTEL, MOTUROA, NEW PLYMOUTH.

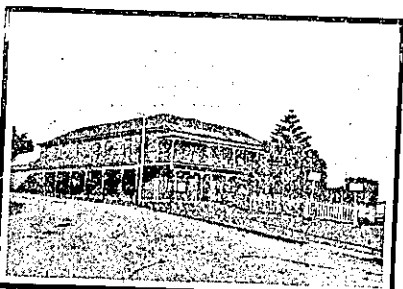
Situated three minutes walk from the Wharf. Only the best of Ales, Wines and Spirits kept. Excellent Accommodation and Good Fishing. Telephone, 152.

TOMMY KNOWLES .. Proprietor.



WHITE HART HOTEL opposite Post and Telegraph Government Offices, NEW PLYMOUTH.

C. CLARKE Proprietor. P.O. Box 30. Telephone 48. The above well-known Hostelry is the appointed house for the Commercial Travellers' Association. Only the best brands of Wines and Spirits. Speight's Dunedin Ale always on draught. First-class Accommodation for Tourists, Travellers, and Families.



TERMINUS HOTEL, NEW PLYMOUTH.

The above Hotel is situated on the Beach, opposite Railway Station, and one minute from Post Office. Beautiful gardens attached to hotel overlooking the sea, and guests may rely on receiving the very best attention.

Best Brands of Wines and Spirits kept. Speight's Dunedin Beer on tap.

TERMINUS HOTEL COMPANY, LTD., F. FOSTER, Manager.

IMPERIAL HOTEL

DEVON-STREET, NEW PLYMOUTH.

JAMES SMITH Proprietor.

This popular house of call is under entirely new Management and is one of the most Centrally Situated Hotels in New Plymouth. Guests may depend on being called to meet early trains, a porter being kept for that purpose.

Only Best Brands of Ales, Wines and Spirits kept. Every possible convenience for the general and travelling public.

Terms, 6s 6d per day. Telephone 122. Box 23.

OPOTIKI.

MASONIC HOTEL, OPOTIKI.

Wines, Spirits, Ales and Cigars of the Best Brands only. Table a Specialty. Every attention. Speight's XXX always on draught. Commercial Sample Room. The Leading Commercial Hotel Bay of Plenty. Excellent Accommodation for Tourists, Travellers and Visitors. Telegraphic Address: "Mann," Opotiki.

G. H. MANN Proprietor.

OHAEAWAI.

OHAEAWAI HOTEL, OHAEAWAI, BAY OF ISLANDS.

MRS. M. PAYNE .. Proprietress.

Mrs. Payne begs to state that no effort will be spared to cater for Visitors of all classes, and that Cleanliness, Civility, a Good Table, and Moderate Rates shall be a Strict Rule as heretofore. Best Wines and Spirits only kept. Ehrenfried's XXXX Beer on Draught. The Best of Beers. First-class Stabling, Paddock and Billiards.

OTAKI.

THE TELEGRAPH HOTEL,

OTAKI.

JAS. WOODS Proprietor.

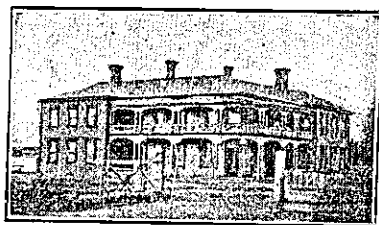
This New Hostelry is now open to the public, and the Proprietor will be pleased to greet old friends and new at the Hotel.

The whole of the Furniture, Fittings, etc., are absolutely New and Up-to-Date, and Customers may rely on receiving the best of attention, and most comfortable apartments at the Telegraph.

ALL LIQUORS OF THE BEST BRANDS.

JAMES WOODS.

PAEROA.



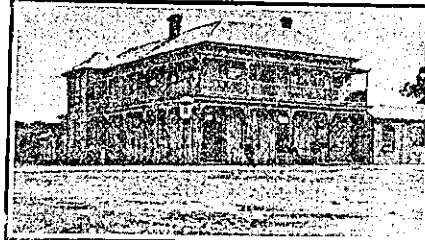
PAEROA HOTEL, PAEROA.

Directly opposite Railway Station and Nearest Hotel to Steamers to and from Auckland.

This New and Commodious Hotel is replete with every Modern Convenience for the Travelling Public.

FIRST-CLASS CUISINE. Hot, Cold, and Shower Baths. Terms moderate.

E. F. MORIARTY (Late of Northern Wairoa), Proprietor.

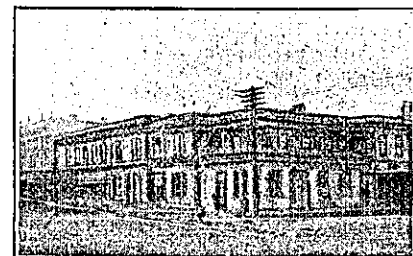


COMMERCIAL HOTEL, PAEROA.

J. H. MOORE Proprietor.

First-class Accommodation for Travellers and Tourists. Cheapest Rates in the district, 4s 6d per day, and Cuisine cannot be surpassed. Wines and Spirits of the Best Brands only kept in Stock. Coaches pass the door for all surrounding districts.

PALMERSTON NORTH.



ROYAL HOTEL, THE SQUARE, PALMERSTON NORTH.

G. SEARLE (late of Otago and Canterbury), has taken over the above well-known Hotel, and hopes by strict attention to business to receive the patronage of the travelling public and residents of the district. Good accommodation for commercials and families.

CAFE DE PARIS HOTEL, PALMERSTON NORTH.

MRS. J. ADAMS .. Proprietress. (Late of Marquis of Normanby Hotel, Carterton).

Opposite Railway Station. Travellers may rely on catching early trains. Speight's Beer.