

HAWKE'S BAY.

CLUB HOTEL, DANNEVIRKE
J. HALLIGAN Proprietor.

This Well-known Establishment, which adjoins Dannevirke Railway Station, offers unsurpassed Accommodation to Travellers and the General Public.

ONLY BEST QUALITIES OF ALES, WINES, AND SPIRITS STOCKED.

CENTRAL HOTEL, WOODVILLE, HAWKE'S BAY.

J. BOTTOMLEY .. Proprietor.
 J.B. would remind all old friends and the travelling public generally that he is still conducting the above hotel. The Central is suitably adapted for visitors to Woodville on account of its central position, and its prestige for Good Accommodation and Quality of Liquors and Ales is established.

EMPIRE HOTEL, WAIPAWA.
JOSEPH CRAIG, PROPRIETOR.

Wines, Spirits, and Beer of the Best Quality Only. The stables in connection with the Hotel offer every facility, and there are also a number of loose boxes.

ROYAL HOTEL,
CARLYLE-STREET, NAPIER
 (Right opposite Recreation Ground).

GEO. H. GILDING Proprietor.



CRITERION HOTEL, NAPIER.

FIRST-CLASS ACCOMMODATION FOR TOURISTS, FAMILIES, AND COMMERCIAL MEN
J. A. SMYTH Proprietor.

POST OFFICE HOTEL,
 (Corner Vogel and Ross Streets)
WOODVILLE
 (Next Post Office).

J. W. ROBINSON Proprietor.
 Late of Prince of Wales, Wellington.

Under New Management, and everything of the Choicest.

WINES AND SPIRITS OF BEST BRANDS.
STAPLE'S BEER.

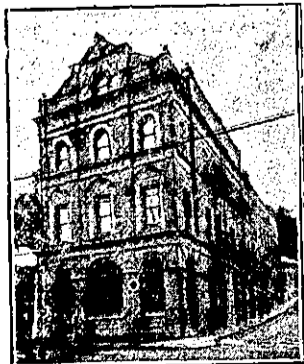
TAVISTOCK HOTEL, WAIPUKURAU.
 FIRST-CLASS ACCOMMODATION FOR VISITORS.

WINES AND SPIRITS OF THE BEST BRANDS.
 Benzine and Naphtha stocked for the convenience of Motorists.

R. CONEYS Proprietor.

COMMERCIAL HOTEL, WAIPAWA.
 Private Suites of Apartments and every Convenience for the Accommodation of the Public.
 WINES, SPIRITS and BEER OF THE BEST QUALITY ONLY.
 A FIRST-CLASS BILLIARD TABLE.
 Good Stabling and Paddock Accommodation.

W. FELLOW Proprietor.



EMPIRE HOTEL, NAPIER.
 (Close to Post Office).

28 Bedrooms, Commercial Room, Sitting Rooms, Study, etc. Hot, Cold, and Shower Baths. Tam-o-Shanter and Oban Whisky. Speight's and Manning's Ales. Tariff, 5s per day; 25s per week.

JOHN BURRIDGE Proprietor.
 (For 28 years manager of Hawke's Bay Club).

HAWKE'S BAY—Continued.

SIMPSON'S CENTRAL HOTEL,
EMERSON-STREET, NAPIER.

Now prepared to receive the Travelling Public. First-class Accommodation. Beer, Wine, and Spirits guaranteed of the best.

SOUTHLAND PROVINCE.



PARIMA HOTEL, SOUTH RIVERTON.

T. R. CARROLL begs to inform intending visitors to Riverton that he has taken over the beautifully-situated Seaside **PARIMA HOTEL**. The Hotel is connected to all parts of Southland by telephone. Nothing but First-class Wines and Spirits in stock, and Speight and Co.'s famous Beer. For tariff and further particulars apply to the Proprietor, **T. R. CARROLL**. Telephone No 4.

CANTERBURY PROVINCE.

DOMINION HOTEL

Gloucester St., Christchurch
 (Opposite New Theatre Royal).

The Hotel has been thoroughly Renovated and Restored

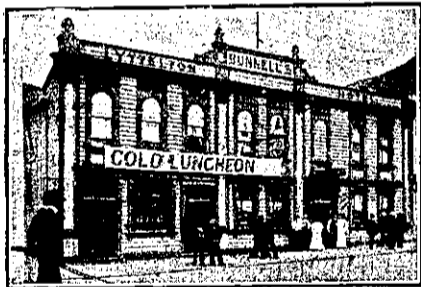
Lighted throughout with Electricity.

Entirely under New Management.
 Complete New Staff of Assistants.

Night Porter in attendance.

Tariff Moderate.
 Special Tariff for Theatricals.
 Letters and Telegrams promptly attended to.

H. McARTNEY,
 PROPRIETOR,
 (Late Timaru and Dunedin.)



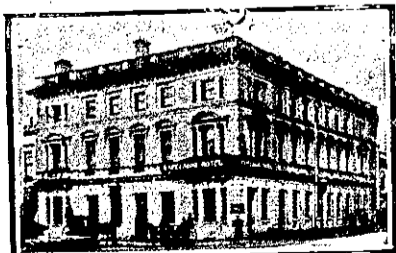
LYTTELTON HOTEL, LYTTELTON

(Under new management). The above Hotel has been renovated throughout, and now offers Accommodation second to none in Lyttelton. Cuisine under the personal supervision of Mrs. Bunnell. Hot and Cold Water Baths. Best Brands of Ales, Wines, and Spirits. Excellent Billiard Table. Tariff Moderate.

J. E. BUNNELL
 (Late of Working Men's Club, Ashburton), Proprietor.

QUEEN'S HOTEL, TIMARU.
MICHAEL FITZGERALD . Proprietor
 (Late of Ashburton).

Corner of Barnard and North Streets, opposite Law Courts. Five Minutes from Railway Station. Splendid Sea View. Hot and Cold Shower Baths. Terms: 4s 6d Per Day, or 25s Week.



THE EXCELSIOR HOTEL
 (Opp. Clock Tower),
CHRISTCHURCH, N.Z.

TARIFF FROM 6s A DAY.

SPECIAL TERMS FOR THEATRICALS

Tel. 1068. Box 599.
A. R. ROWSE Proprietress.

CANTERBURY.—Cont.

CLUB HOTEL, TIMARU.

Close to Railway Station, and offering Excellent Accommodation to Travellers.

Liberal Cuisine. Hot and Cold Baths. Best Brands of Liquors Stocked. Moderate Tariff.

E. WARD .. Proprietor.

EMPIRE HOTEL, LONDON-STREET, LYTTELTON.

J. McCONCHIE Proprietor
 (Late of Kaitiaki)

Having taken over this fine Hotel, the Proprietor is prepared to give Visitors and the Travelling Public entire satisfaction.

Where to Stay in Christchurch?

STOREY'S FAMILY HOTEL

(Late Terminus).

Right Opposite Railway Station.

Convenient to all parts of city and suburbs, as Electric Cars start from the door.

Excellent Cuisine.

Tariff on application

WM. JAMES Proprietor.

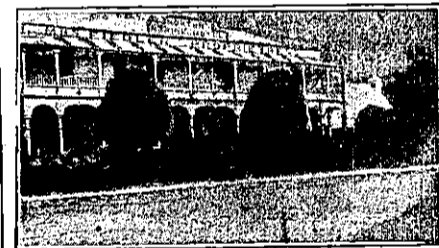


THE NEW CLARENDON HOTEL, CHRISTCHURCH.

CORNER OF OXFORD TERRACE AND WORCESTER-STREET
 (One Minute's Walk from General Post Office.)

Recently Re-built. Superior Accommodation for Tourists and Travellers. All Modern Conveniences. Splendidly Situated.

D. COLLINS .. Proprietor.



MARINE HOTEL, SUMNER.

An Ideal Holiday Resort, offering excellent Accommodation for the Travelling Public.

BEST BRANDS OF WINES AND SPIRITS. HOT, COLD, AND SHOWER BATHS. BILLIARD TABLE.

JAS. HATFIELD Proprietor.

THE GLADSTONE HOTEL,

Off Papanui Road, CHRISTCHURCH.

AN UP-TO-DATE HOUSE.

Excellent Accommodation. Liquors of Special Quality and Great Variety. Manning's Ales on Draught.

H. PIPER .. Proprietor.

CROWN HOTEL, TIMARU.

W. QUIRK Proprietor
 (Late of Oamaru),

Has pleasure in notifying the Public of Timaru and surrounding districts that he has taken over the above well-known Hotel, and will run it on the best lines. Good Table and Accommodation. All the Best Brands of Ales and Liquors on sale.

W. QUIRK Proprietor.

EXCELSIOR HOTEL, TIMARU.

WM. H. ANDERSON .. Proprietor.
 (of Middlemarch).

The X.L.C.R. for FIRST-CLASS ACCOMMODATION and Choicest Brands of Liquors.

One Minute's Walk from Railway Station and Post Office.

TERMS: 6s 6d PER DAY.

Telegrams: EXCELSIOR.
 Telephone No. 154.

MELVILLE HOTEL, TIMARU.

J. REILLY Proprietor

(Late of Wallingford Hotel, Temuka).
 The Proprietor will be pleased to see Old and New Friends at the Melville.

BEST WINES AND SPIRITS ONLY.

CANTERBURY.—Cont.

Do You Want Accommodation?

Then interview **CHARLIE J. STARK**
 (Late of Gore, Oamaru, and Waimate),

CAVERSHAM HOTEL,
 Corner HIGH AND MADRAS STS,
CHRISTCHURCH

Where he will supply you with a Good Bed and the Best of Meals, for 5s 6d per day. Ask your Cabman to drive you to the CAVERSHAM. Manning's Celebrated Ales.

COMMERCIAL HOTEL, TIMARU.

(Opposite Rotunda, Stafford-street.
MRS. A. A. WEBB Proprietress.
 (Late of Middlemarch).

Superior Accommodation for Visitors and Boarders. All the Comforts of a Home. Wines, Spirits and Ales of the Best Brands. Charges Strictly Moderate.

OTAGO PROVINCE.

GLADSTONE HOTEL,
MACLAGGAN-STREET, DUNEDIN.

JOHN COLLINS .. Proprietor.
 (Late of Al Hotel, Pellicet Bay).

The most Centrally-situated Hotel in the City. First-class Accommodation for Tourists Travellers, and Boarders. Suites of rooms for Families. Charges Moderate. A Special Feature: 1s Lunch from 12 to 2 o'clock. Hot, Cold, and Shower Baths. The Very Best of Wines, Ales, and Spirits supplied.

BOWLING GREEN HOTEL,

Corner of Frederick and Cumberland streets, DUNEDIN.

W. D. WYATT, late of Wellington, begs to inform his Friends and Country Visitors that he has taken the above well-known Hotel, which has been thoroughly Renovated and Re-furnished, and is now in a position to offer his Patrons First-class Accommodation.

TERMS MODERATE. NOTED HOUSE FOR BEST WINES AND SPIRITS.

EUROPEAN HOTEL,
GEORGE-STREET, DUNEDIN.

Good Accommodation for Travelling Public. Best Brands of Wines and Spirits Kept.

J. MORRISON Proprietor.
 (Late Ranfurly, Central Otago).

NELSON PROVINCE.

MASONIC HOTEL, NELSON.
 CHANGE OF OWNERSHIP.

This long-established Hotel, which has always been the Headquarters in Nelson for Tourists and Commercial Travellers, has recently been purchased by Mr. H. Balgent.

The Hotel has been thoroughly Renovated, and all the Rooms are being Re-fitted in modern style. No effort will be spared to make all visitors thoroughly comfortable.

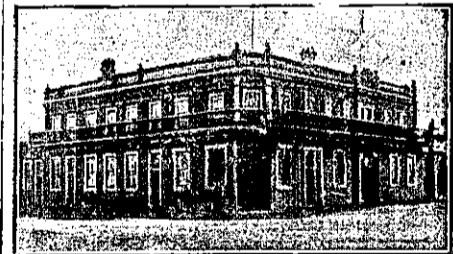
MARLBOROUGH PROVINCE.

MASONIC HOTEL, BLENHEIM

Is Central, Popular, and Convenient, does a Commercial Business; has Splendid Appointments; Hot and Cold Baths; one of Alcock's Match Tables; and is the House selected by the N.Z.C.T. Club. Moderate Tariff.

J. PENNEY .. Proprietor.

WESTLAND PROVINCE.



GRAND HOTEL

PALMERSTON-STREET

WESTPORT.

DAVID LEECH Proprietor.

GLADSTONE HOTEL, REEFTON.

This Hotel, having been thoroughly Renovated and Re-furnished throughout, now offers Superior Accommodation at a moderate tariff.
 Best Brands of Wines, Spirits, Ales etc.

TARIFF: 4s 6d PER DIEM.

R. DUNPHY Proprietor.

COMMERCIAL HOTEL, REVELL STREET, HOKITIKA.

THOS. PALMER .. Proprietor.
 (Late Cameron's Hotel).

This Hotel is situated next to Cameron's Stables, and has been renovated throughout, and has every convenience for Travellers, Tourists, and the General Public. Hot and Cold Water Baths. Visitors will receive a hearty welcome. Only the Very Best of Wines, Spirits, and Ales kept. Board and Lodging, Moderate Charge; Permanent Boarders by arrangement.