

WELLINGTON.—Continued.



PROVINCIAL HOTEL, WANGANUI.

FIRST-CLASS ACCOMMODATION FOR THE TRAVELLING PUBLIC. ONLY THE BEST OF ALES, WINES, AND SPIRITS KEPT IN STOCK.

W. TUCK Proprietor.

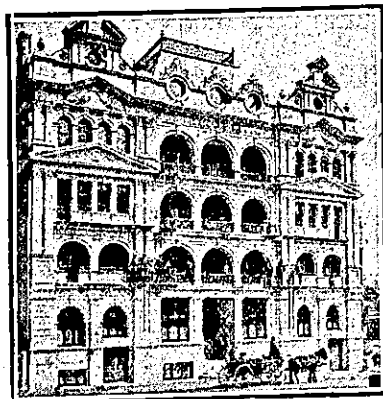
OCCIDENTAL HOTEL, Lambton Quay, Wellington.

I beg to announce that I have taken over this well-known Hotel, and alterations and improvements are now in hand which will again make the Occidental the Leading House of the City. The house is being completely renovated and put in thorough order. Daily Lunch will be a speciality. JOHN H. FAIRBAIRN .. Proprietor. (Late of Johnsonville).

CLUB HOTEL, MARTON.

R. J. WALTERS Proprietor.

First-class Accommodation for Visitors and the Travelling Public. Only the Best Brands of Ales, Wines and Spirits kept. First-class Billiard Room.



HOTEL ARCADIA, WELLINGTON.

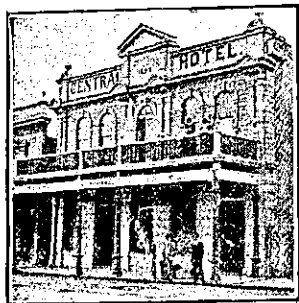
Most Up-to-date Private Hotel in the Colonies. Smoking Rooms, Writing Rooms, Drawing Rooms and Lounge. Beautiful Roof Garden, reached by electric lift.

JOHN PATERSON .. Proprietor (For 20 Years with U.S.S. Co.).

COMMERCIAL HOTEL, WANGANUI.

A. SUMMERS Proprietor.

First-class Accommodation for the Travelling Public. Wines and Spirits of the Best Brands only kept in stock.



CENTRAL HOTEL, MASTERTON.

MR. F. S. COOPER, late of the Empire Hotel, Hawera, and formerly of Wellington, wishes to inform the Travelling Public that he has taken over the above well-known house. This hotel offers superior accommodation to travellers, and is a First-class Family Residence in every respect. The rooms are well ventilated, lofty, and comfortably furnished.

Good Table, Best of Wines, Ales, etc. Telegrams and Letters will receive prompt attention. F. S. COOPER Proprietor.

MARTON HOTEL, MARTON.

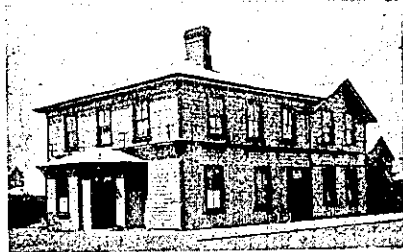
J. A. PAWSON Proprietor. Mr. Pawson begs to intimate that he has taken over the above Hotel, and the travelling public can rely on First-class Accommodation at a moderate tariff. Only the Best of Ales, Wines, and Spirits kept. Tariff: 4s 6d per Day.

COFFEE PALACE, Opposite Railway Station, Wanganui.

This well-known House is easily got at from the Railway Station, and Families and the General Public will find every Comfort and Convenience. Terms Moderate.

MISS DOBLE .. Proprietress.

WELLINGTON.—Continued.



MASONIC HOTEL, RIVERBANK, WANGANUI.

WM. ABBOTT, Proprietor. (Late of Star Hotel, Otahuhu). EVERYTHING UP TO DATE.

CAFE DE PARIS HOTEL, PALMERSTON NORTH.

MRS. J. ADAMS .. Proprietress. (Late of Marquis of Normanby Hotel, Carterton).

Apposite Railway Station. Travellers may rely on catching early trains. Speight's Beer.

THE COMMERCIAL HOTEL, PALMERSTON NORTH.

T. CHILDS Proprietor. The proprietor of this conveniently-situated Hotel having had the premises entirely renovated and remodelled, is prepared to receive travellers and the public generally, and guarantees strict attention, the best of Wines and Spirits, and trusts to obtain by these means a fair share of patronage.

WAITOTARA HOTEL, WAITOTARA.

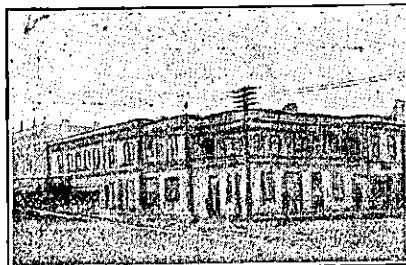
Has been brought thoroughly Up-to-date and offers First-class Accommodation to Travellers.

Best of Wines and Spirits. Speight's XXX Ales always on Tap.

GEO. McARTHUR Proprietor. (Late of Wellington).

MANAWATU HOTEL, AVENUE ROAD, FOXTON.

A. E. SHADBOLT Proprietor. Every attention given to Visitors to the town, and also to Boarders. Comfortable Sitting Rooms and airy Bedrooms. Cuisine of the Best. None but the Most Superior Wines, Spirits, Ales and Stout, and other Liquors kept in stock. Good Stabling, and roomy loose boxes available.



ROYAL HOTEL, THE SQUARE, PALMERSTON NORTH.

G. SEARLE (late of Otago and Canterbury), has taken over the above well-known Hotel, and hopes by strict attention to business to receive the patronage of the travelling public and residents of the district. Good accommodation for commercials and families.

THE GRETNA HOTEL, TAIHAPE. UNDER NEW MANAGEMENT.

Tariff: 8s Per Day. Good Sample Rooms. Best Brands Only. Passengers called for early Coach. F. H. GIBBONS Proprietor.

THE TELEGRAPH HOTEL, OTAKI.

JAS. WOODS Proprietor.

This New Hostelry is now open to the public, and the Proprietor will be pleased to greet old friends and new at the Hotel.

The whole of the Furniture, Fittings, etc., are absolutely New and Up-to-Date, and Customers may rely on receiving the best of attention, and most comfortable apartments at the Telegraph.

ALL LIQUORS OF THE BEST BRANDS.

JAMES WOODS.

WELLINGTON.—Continued.

EMPIRE HOTEL AND LIVERY STABLES, FEATHERSTON.

The EMPIRE is the appointed Hotel to the Wellington Commercial Travellers' Association and N.Z. Cyclists' Touring Club.

JOHN CARD Proprietor.

PRIVATE HOTEL,

YORK BUILDINGS NO. 2, FEILDING.

FOR COMFORT AND CONVENIENCE

UNEXCELLED.

TELEPHONE No. 137.

MRS. SHERWILL Proprietress.

CLUB HOTEL, QUEEN-STREET, MASTERTON.

Patronised by His Excellency The Earl of Ranfurly.

Now under the Management of TOM PORTER, (Late Manager Royal Oak Hotel, Wellington).

Having made arrangements for the use of Sample Rooms, which are adjacent to the Club, Travellers can rely on being accommodated by wiring for Sample Rooms. Nothing but Staples and Co.'s Beer sold.

TOM PORTER Proprietor.

HUNTERVILLE HOTEL, HUNTERVILLE.

E. D. HAMMOND Proprietor.

The Proprietor wishes to intimate that he has just taken over the above premises. This Hotel offers superior Accommodation to Travellers. Good Table. Best of Wines, Ales, etc. Terms: 4s 6d per day.

HOTELS FOR SALE.

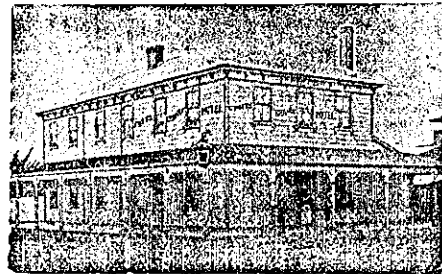
DWAN BROS.,

HOTEL BROKERS, VALUERS, AND FINANCIERS, WILLIS STREET, WELLINGTON (Established 1880).

HOTEL—Rent, £2 15s. Price, £750 HOTEL—Rent, £5 8s; trade, £80 to £90. Price, £2200. HOTEL (Manawatu)—Rent, £4. Price, £2250. HOTEL (Wellington)—Five years' lease. Price, £5500. BRICK HOTEL (Wellington)—Trade over £200 weekly. Elegantly furnished. HOTEL (Wairarapa)—Trade about £130 weekly. Price, £2500. HOTEL (Rangitikei)—Rent, £4. Price, £2200. HOTEL (Wairarapa)—Seven years' lease. Price, £3000. HOTEL (Christchurch)—Price, £1500. HOTEL (Wairarapa)—Price, £1800.

DWAN BROS.

TARANAKI PROVINCE.



A COMFORTABLE HOSTELRY.

CHARLES POTTS Began to intimate that he has entered into possession of the BRANCH HOTEL, BRIDGE-ST. ELTHAM. Wines, Spirits and Liqueurs of the choicest quality. The Cuisine is under the management of an Experienced Chef. Hot Lunch Daily from 12.30. Saturday and Sale Days from 12. Tariff, 5s Per Day.

CLARENDON HOTEL, WAVERLEY.

MR. G. W. OAKENFULL Began to inform the travelling public and residents of Waverley that he has taken over the Clarendon Hotel. He hopes that with strict attention to the comfort of his guests, a good table, and the best of Ales, Wines, Spirits, etc., to be favoured with their patronage.

TARANAKI.—Cont.



COMMERCIAL HOTEL, STRATFORD.

Over the bridge in Stratford, that's where the Hotel stands. As a Home it offers attractions famous in many lands. Everything clean and dainty; noted for its good cheer. Only the best of Spirits and Paul's and Speight's Beer.

F. S. POLLOCK Proprietor.

BREAKWATER HOTEL, MOTUROA, NEW PLYMOUTH.

Situated three minutes walk from the Wharf. Only the best of Ales, Wines and Spirits kept. Excellent Accommodation and Good Fishing. Telephone, 152

TOMMY KNOWLES .. Proprietor.

SHAMROCK HOTEL, PRINCESS-STREET, HAWERA.

W. GREIG, Proprietor.

Only Best Wines and Spirits. Good Accommodation for Travellers. TERMS MODERATE.

IMPERIAL HOTEL,

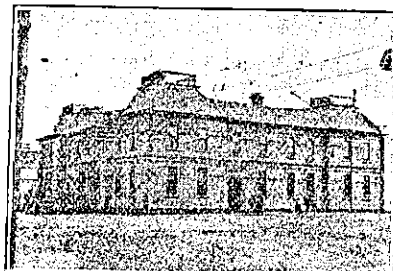
DEVON-STREET, NEW PLYMOUTH.

JAMES SMITH Proprietor.

This popular house of call is under entirely new Management and is one of the most Centrally Situated Hotels in New Plymouth. Guests may depend on being called to meet early trains, a porter being kept for that purpose.

Only Best Brands of Ales, Wines, and Spirits kept. Every possible convenience for the general and travelling public.

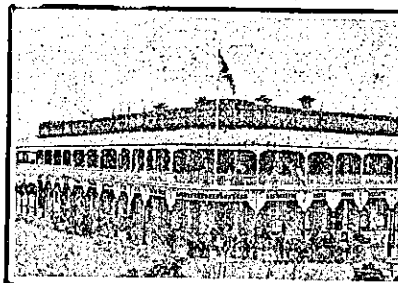
Terms, 6s 6d per day. Telephone 123. Box 88.



EGMONT HOTEL, HAWERA.

A. J. JURY Proprietor.

The Proprietor (lately of the Okaiawa Hotel, and formerly of the Shamrock) begs to inform his friends and the public generally that he has taken over the above popular Hotel, and trusts that, by strict attention to their comfort, and by keeping only the best of liquors, to retain their patronage.



WHITE HART HOTEL, opposite Post and Telegraph Government Offices, NEW PLYMOUTH.

C. CLARKE Proprietor. P.O. Box 30. Telephone 48. The above well-known Hostelry is the appointed house for the Commercial Travellers' Association. Only the best brands of Wines and Spirits. Speight's Dunedin Ale always on draught. First-class Accommodation for Tourists, Travellers, and Families.

Show Catalogues Trade Price Lists, Receipt Books Order Forms Invoices Billheads, Handbills, Circulars Large and Small Posters and Playbills Ball and Theatre Programmes, Professional and Visiting Cards, And every description of First-class PRINTING Executed at Lowest Rates.

Send for Quotations to ARTHUR CLEAVE & CO., LTD., Vulcan Lane, AUCKLAND.