

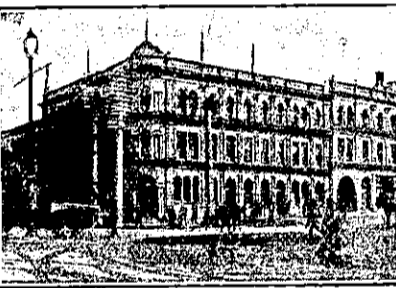
AUCKLAND PROVINCE.—Continued



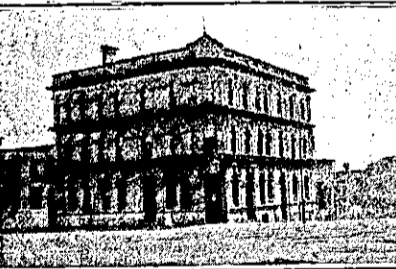
FUNCTION HOTEL, EPSOM.
Buses and trams pass here on their way to and from Ellerslie Racecourse and Alexandra Park Football Ground.
WINES, SPIRITS AND BEERS—BEST ONLY.
Give me a Call—
J. COTTERALL Proprietor.



PALACE HOTEL
THE PREMIER HOTEL OF TE AROHA.
FRANK PILLING Owner.
Offers Special Accommodation for Tourists, Families and Visitors. Commercial Sample Room. Telegrams Promptly Attended to. Spacious Bedrooms, Private Parlours. Hot, Cold, and Shower Baths.
TARIFF: From 7s Per Day.
THE SPORTING HOTEL OF THE DISTRICT



WAITEMATA HOTEL, Cor. QUEEN & CUSTOM STS., AUCKLAND.
Close to the Wharf and Railway Station.
VISITORS WILL FIND EVERY COMFORT AND CONVENIENCE.
JOHN ENDEAN Proprietor.
Telephone 589.



CITY HOTEL, Corner of VICTORIA & HOBSON STS., AUCKLAND.
WALTER STIMPSON (Late of the Queen's Ferry), Will be glad to welcome Old and New Friends at the above Popular House. The Wines, Spirits, Ales and Cuisine will be found to be unexceptionable, while the Accommodation is thoroughly modern.

HUNTLY HOTEL, HUNTLY
L. B. HARRIS Proprietor.

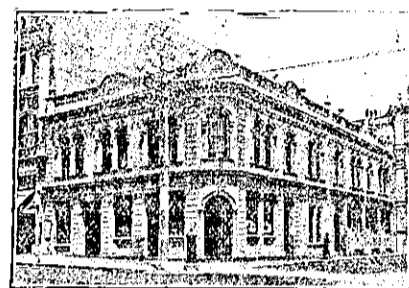
This Hotel is now one of the largest in the Waikato. All trains stop at Huntly, and the Hotel is a few yards from the Station. First-class Accommodation and Excellent Table.

NAVAL AND FAMILY HOTEL,
CORNER OF PITT-STREET AND KARANGAHAPE RD., AUCKLAND.

D. NORDEN, for many years proprietor of the Prince Arthur Hotel, desires to intimate to his many friends and the public that he has again taken possession of the above Popular House, where he will be pleased to afford every comfort and convenience to Patrons. The House, which has been Renovated throughout, is situated on one of the most elevated sites in the city, commanding a splendid view, and is within five minutes' journey from Wharf and Railway Station.
TARIFF: FIVE SHILLINGS PER DAY.
TRAMS PASS THE DOOR.



THAMES HOTEL, QUEEN AND CUSTOM STREETS, AUCKLAND.
MR. THOS. BUXTON (late British Hotel) begs to inform the Public that he has taken over the above Hotel. The Hotel has been thoroughly renovated, and now offers Accommodation second to none in Auckland. Handy to Trains, Boats, and Trams. Excellent Table, and only Best Brands of Ales, Wines and Spirits on Stock.
THOS. BUXTON Proprietor.



THISTLE HOTEL, QUEEN-STREET, AUCKLAND.
MR. PAT QUINLAN has now taken over the Management of the above Hotel, which has been thoroughly Renovated throughout. A Few Doors above the City Chambers.
PAT QUINLAN Proprietor.



KARANGAHAKE HOTEL, MAIN-ST., KARANGAHAKE.
Centrally situated. Coaches stop at the door. Dining-room capable of accommodating 90. Speight's Dunedin Ales, also Campbell-Ehrenfried's. Central Hall for Concerts, etc. is the largest in the town. Hotel and Hall lighted by Acetylene Gas. Spacious and well-lighted rooms.
A. MONTGOMERY Proprietor.

WELLINGTON PROVINCE.

MASONIC HOTEL,

WELLINGTON.

UNDER NEW MANAGEMENT.

THIS IS ONE OF THE BEST AND MOST UP-TO-DATE HOTELS IN WELLINGTON.

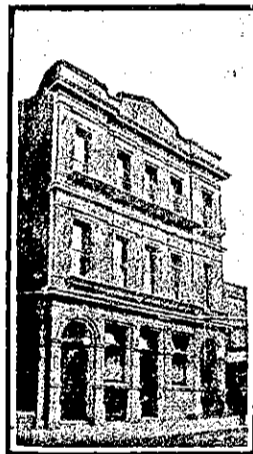
ALL MODERN CONVENIENCES.

PLUNGE BATHS AND ELECTRIC LIGHT THROUGHOUT.

ONLY THE BEST LIQUORS KEPT IN STOCK.

TARIFF: 7s PER DAY.

B. O'NEILL PROPRIETOR.

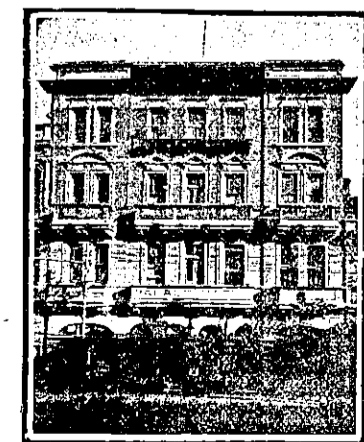


MANCHESTER HOTEL, FEILDING.
This centrally and conveniently-situated Hotel offers the best Accommodation for the Travelling Public. Replete with every modern convenience. Best Brands of Ales, Wines, Spirits, etc., kept on Stock.
D. P. BARRETT Proprietor.

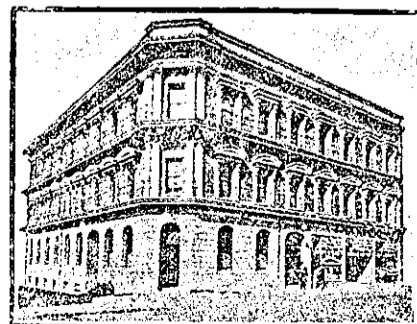


RUTLAND HOTEL, WANGANUI.
F. C. FABER Proprietor.
THE HOME OF THE TOURIST.

The above Hotel has just been rebuilt and newly furnished throughout in an up-to-date style. The reading, writing and smoke rooms are replete with every convenience. The greatest care is taken to maintain a reputation for home comfort. Dark room for photographers.



THE PALACE HOTEL, WILLIS-STREET.
Wellington's Most Comfortable Hostelry. Magnificently Furnished. Replete with Every Modern Convenience. Electric Light Throughout. Perfect Cuisine. Now under the Management of **A. W. HARRISON**. Communications promptly replied to. Telephone 863.



THE NEW ZEALANDER HOTEL, MANNERS-STREET (close to Opera House), WELLINGTON.
M. J. ("TED") DONNELLY, Proprietor (Late of Masonic Hotel, Wellington).
This Hotel has recently been rebuilt, and is now ready to accommodate Commercial Travellers and the Travelling Public. Letters and Telegrams receive prompt attention.
Telephone No. 1701. P.O. Box 557.

WELLINGTON.—Cont.

THE EMPIRE HOTEL,

(LIMITED).

THE LEADING AND MOST CENTRAL HOTEL IN WELLINGTON.



BARRETT'S HOTEL, LAMBTON QUAY, WELLINGTON. (Op. Bank of New Zealand).
Newly Built in Brick. Over 70 Rooms. All Modern Conveniences. Close to Wharf and Post Office. Excellent Table kept. Day and Night Porters in attendance. Tariff 7s per day, weekly by arrangement. Letters and Telegrams receive prompt attention. Phone 1076.
W. M. KELLY Proprietor.



CENTRAL HOTEL, PALMERSTON NORTH.
The Central Hotel on Main-st. West in Palmerston is surely the best. The tables good, the bedrooms fine. With best of spirits, beer and wine; Fine sitting-rooms, baths hot and cold. And a welcome sure for young and old; So call on me when next you pass, And w'll enjoy a friendly glass.
A. F. ANDERSON Proprietor.

CLUB HOTEL, PALMERSTON NORTH.
H. B. TUCKER Proprietor.

This Hotel stands on about two acres of land, and includes a large garden and stables, twelve large, well-lighted and ventilated Sample Rooms.
Telephone 29. P.O. Box 46.

UNDER THE IMMEDIATE SUPERVISION OF
MR AND MRS. H. B. TUCKER.

POST OFFICE HOTEL, FOXTON.
THE LEADING HOTEL OF "FLAXOPOLIS."

Coaches leave hotel for Shannon and Levin.
BEST OF WINES AND SPIRITS.
SPEIGHT'S BEER.
GEO. GRAY Proprietor.

CASEY'S FAMILY HOTEL LOWER HUTT.
JOHN YOUNG .. Proprietor.

This hotel offers accommodation second to none in the district. Central position and close to the Post Office. Billiards, Excellent Table, and Best Brands of Wines and Spirits. Only Speight's Beer drawn.
Good Stabling and Commodious Loose Boxes.

DEVINE'S EMPIRE HOTEL, MAIN STREET, PALMERSTON NORTH.

A First-class Family and Commercial Hotel. Convenient to all public offices and places of amusement. Letters and telegrams will receive prompt attention.
Telephone 108. P.O. Box 193.

W. DEVINE Proprietor.

THE NEW RAILWAY HOTEL, (Opposite Railway Station) PALMERSTON NORTH.

J. HURLEY Proprietor.
Over 70 Rooms, 6 Bathrooms (hot and cold water), newly furnished throughout. Up-to-date in every respect. First-class Table. Best Liquors only. Terms Moderate.