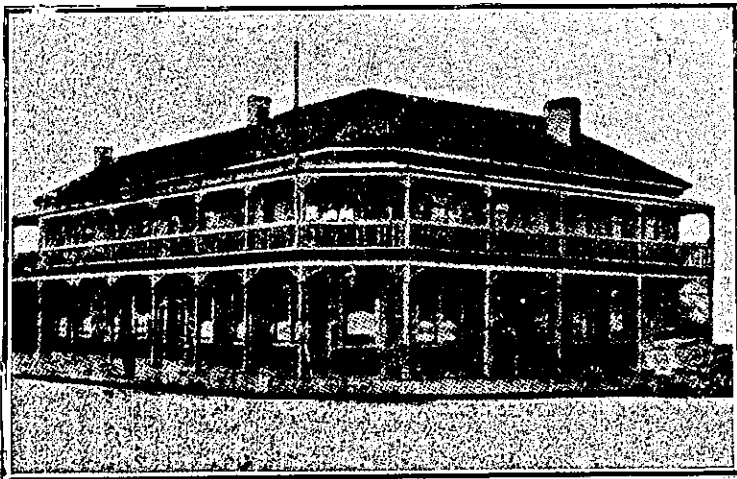


"Who said Beggs?"



"We all did!"

Agents, **The CAMPBELL EHRENFRIED & Co. Ltd.**



JUNCTION HOTEL, DANNEVIRKE.

CHAS. BADDELEY, Proprietor.

First-class Accommodation. Best of Wines, Ales and Spirits. Hot Cold, and Shower Baths. First-class Billiard Table. MODERATE TARIFF.

CHANGE IN MANAGEMENT.

PROVINCIAL HOTEL, NAPIER.



(Two minutes' walk from Railway Station and convenient to all parts of Town and Suburbs).

J. BERRYMAN begs to announce that he has taken over the above Hotel, and hopes by strict attention to business to receive the patronage of the travelling public and residents of the district.

BEST WINES AND SPIRITS Always in Stock.

COCKAYNE'S LEVIATHAN,

MANCHESTER and ST. ASAPH STREETS, CHRISTCHURCH.

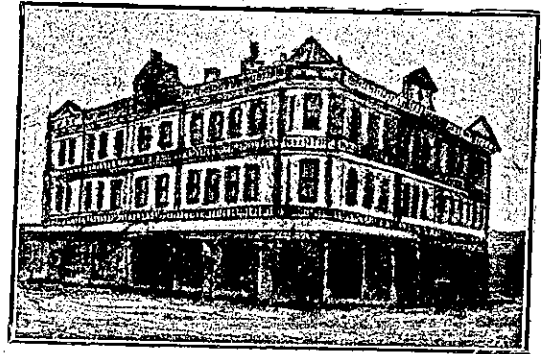
Visitors to Christchurch should secure accommodation at the Leviathan. It offers all the advantages of an up-to-date home, and is furnished throughout in such a manner as to provide the Best Accommodation for Boarders, Visitors, and Travellers.

PRIVATE ROOMS FOR LADIES. Hot and Cold Baths, Fire Escapes, etc.

Within Five Minutes' Walk from Christchurch Railway Station.

TARIFF:
4/6 PER DIEM.
30/- PER WEEK.

Comfort, Cleanliness, and Civility Guaranteed. Letters and Telegrams Receive prompt attention. TELEPHONE 747.



WHITE HART HOTEL, MARTON.

The Leading Family Commercial Hotel in the District. Lit Throughout with Electric Light. Well-lighted Sample Rooms. Hot and Cold Shower Baths. Telephone No. 6. P.O. Box 10. Only the Best Brands of Wines and Spirits kept.

S. J. GIBBONS Proprietor.

DRINK! DRINK!

GREY AND MENZIES'

FERMENTED GINGER BEER (In Stone Bottles).

Manufactured by GREY AND MENZIES. AERATED WATER MANUFACTURERS. Eden Crescent, Auckland.

ALBION HOTEL, LONDON-STREET, LYTTELTON.

GEO. M. RYAN Proprietor.

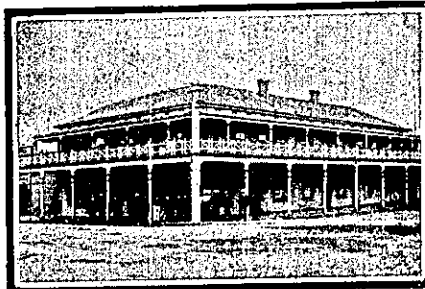
Finest Billiard-room in the Colony. (Two Alcock's Match Tables). First-class Accommodation.

ONLY THE BEST KEPT.



THE MANGONUI HOTEL, MANGONUI.

THOS. WEBB Proprietor. T.W. begs to inform the Settlers of the North generally, and all Visitors to Mangonui, that he has taken over the New and Commodious Hostelry, near the Wharf, and trusts by strict attention to Business and Civility, to meet all demands. A GOOD TABLE KEPT. None but the best of Liquors, Beers, etc., kept in stock, and on Draught.



COMMERCIAL HOTEL, STRATFORD.

Over the bridge in Stratford, that's where the Hotel stands. As a Home it offers attractions famous in many lands. Everything clean and dainty; noted for its good cheer. Only the best of Spirits and Paul's and Speight's Beer.

F. S. POLLOCK Proprietor.

ROYAL HOTEL, VICTORIA-STREET, AUCKLAND.

J. MORRISON Proprietor.

Tariff, from 9s per day.

LAING'S MASONIC HOTEL, WOODVILLE.

Excellent Accommodation for the Travelling Public at a Moderate Tariff. Best Wines, Spirits, Ales, etc. Good Billiard Table. Ample Stabling and Paddockings. Coaches run twice daily to Shannon.

ANDREW LAING (late of Foxton) Proprietor.

HUNTERVILLE HOTEL, HUNTERVILLE.

E. D. HAMMOND Proprietor.

The Proprietor wishes to intimate that he has just taken over the above premises. This Hotel offers superior Accommodation to Travellers. Good Table. Best of Wines, Ales, etc. Terms: 4s 6d per day.

CLUB HOTEL, QUEEN-STREET, MASTERTON.

Patronised by His Excellency The Earl of Ranfurly.

Now under the Management of TOM PORTER, (Late Manager Royal Oak Hotel, Wellington).

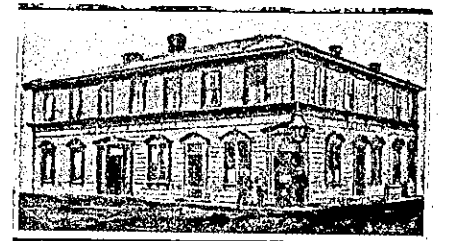
Having made arrangements for the use of Sample Rooms, which are adjacent to the Club, Travellers can rely on being accommodated by wiring for Sample Rooms. Nothing but Staples and Co.'s Beer sold.

TOM PORTER Proprietor.

SHAMROCK HOTEL, TIMARU.

H. McARTNEY (Late of St. Kilda Hotel, Dunedin).

Centrally situated, and the choicest of everything. The house has been renovated throughout, and patrons will find Comfort and Cleanliness.



LANGHOLM HOTEL, MANGAWEKA.

First-class Accommodation for the Travelling Public.

Only the Best Wines, Ales and Spirits kept.

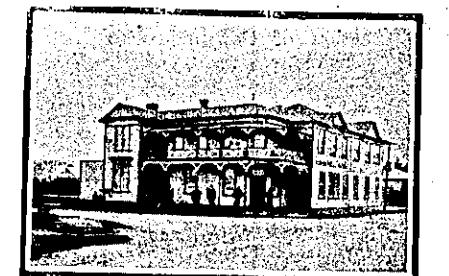
Telegrams receive prompt attention.

G. F. BONNOR Proprietor.

THE GRETNA HOTEL, TAIHAPE. UNDER NEW MANAGEMENT.

Tariff: 8s Per Day. Good Sample Rooms. Best Brands Only. Passengers called for early Coach.

F. H. GIBBONS Proprietor.



COMMERCIAL HOTEL, WOODVILLE (Two minutes' walk from Railway Station).

C. BALCOMBE Proprietor. This Hotel is now thoroughly complete, and is one of the best appointed houses along the line. All trains stop in time for refreshments. Breakfast ready for early trains. Night Porter in attendance. First-class Luncheon from 12 noon till 2.30 p.m., 1s.

FRANKTON HOTEL (Opposite Station).

D. HOLLAND Proprietor.

Best Brands Wines and Spirits Kept. Hancock's XXX Ales. First-class Accommodation for Tourists and the General Public.

EMPIRE HOTEL, FEILDING (Under New Management).

House Newly Furnished. New Sample Rooms. First-class Stabling. Country Visitors Specially Catered for. Close to Railway Station. Choicest Wines, Spirits, Beer and Cigars. W. J. WILLIAMS Proprietor.